



METALTECH GLOBAL

Architectural Metals

Turning Vision Into Reality



Thank you for reviewing our solutions booklet. We are confident that it will both enlighten and motivate you to solve your design dilemmas using our natural metals and adaptable cladding systems.

Flip through photos or our past projects, and get just enough information you need to get your creativity flowing. From complete building envelopes to perforated screen walls, we hope you become inspired, keeping us in mind for your next sustainable project.

Use this solutions booklet to kick start creativity for your next project. Contact one of our representatives to help!

Turning your vision into reality,

Nils Simonsen

President





Who we are

MetalTech Global, a Forza Group Company, is a manufacturer, distributor, and reprocessor of architectural grade metals, facade systems, and roofing systems with a variety of modern metal finishes. Every MetalTech Global product is engineered and created for sustainability, beauty, and textures that will help your architectural idea become a sustainable reality.

Our Mission Statement:

MetalTech Global aims to be the No. 1 specialty fabricator and distributor of architectural systems and high-end metals while striving to help make our customer's vision become a sustainable reality through superior service, quality, and performance.

In our efforts to be customer-drive organization and provide exceptional services to our customers, MetalTech Global routinely revisits and develops the best practices and processes aimed at providing the ultimate customer experience. Our commitment to excellence is showcased in all we do.

From cladding systems to innovative metal finishing techniques, we provide the best solutions for the building and design community.



Content

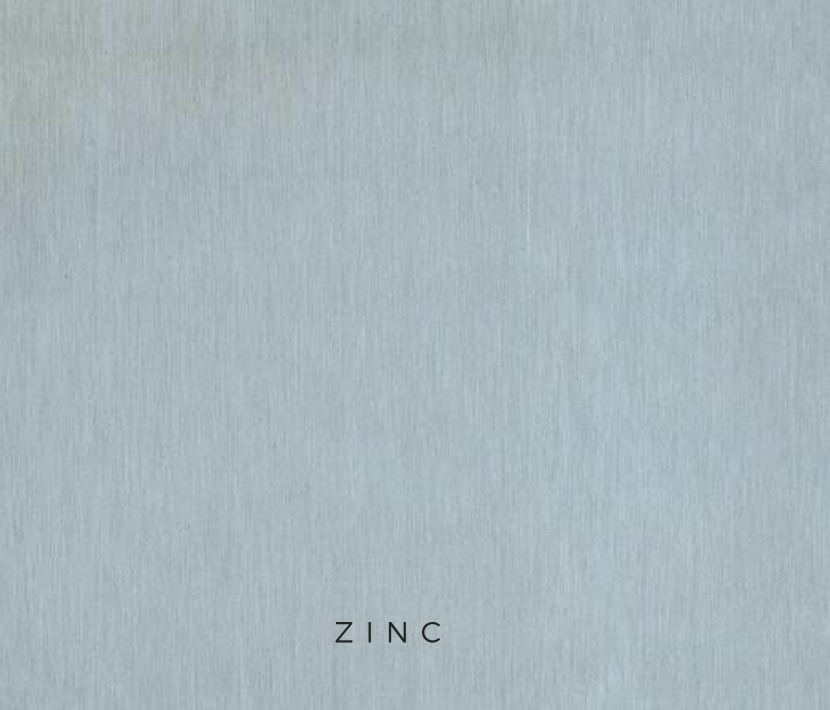
Architectural Metals
Architectural Zinc
Aluminum
Copper
Titanium
Weathering Steel
Stainless Steel



Architectural Metals

EcoChoice Materials are our line of environmentally-sensitive, green-friendly metal products for facades, roofs, and interior / exterior elements. In today's commercial building industry, there is an ever-increasing demand to meet Green Building Standards.

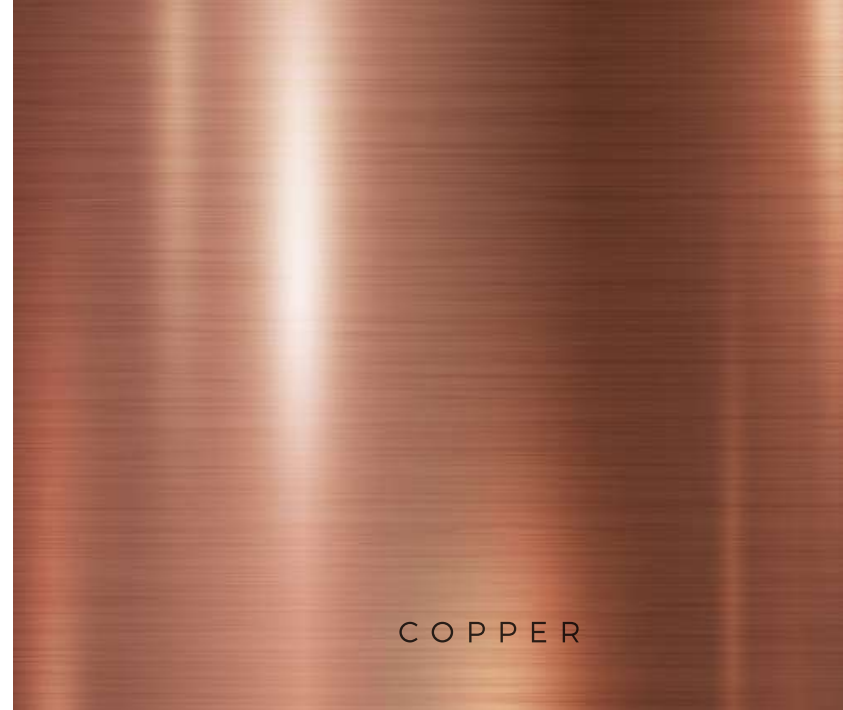
MetalTech Global embraces the transition by using only top grade, sustainable materials. We strive to raise the standards of environmental consciousness in the construction field and work with you to make your projects LEED certifiable.



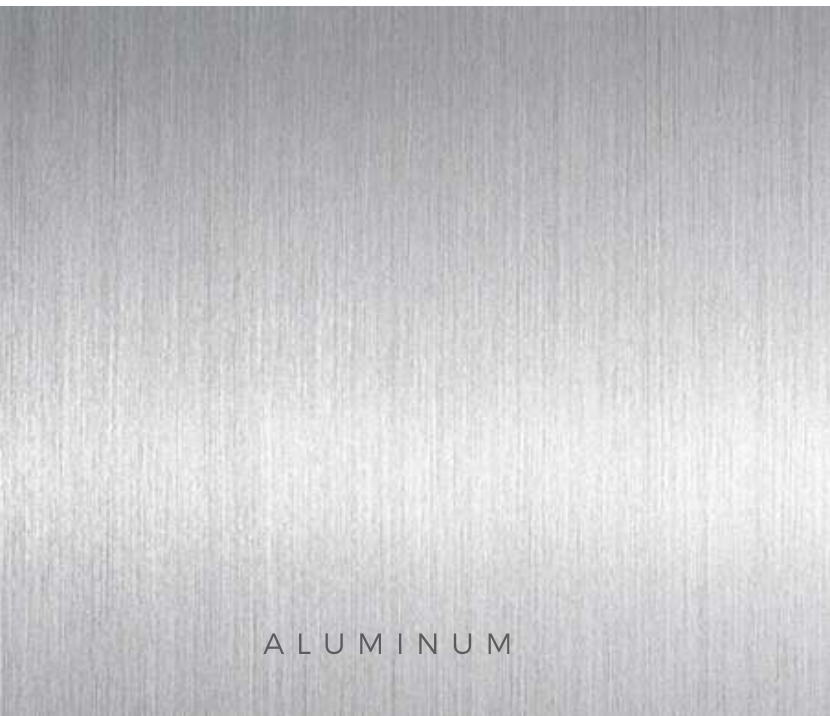
ZINC



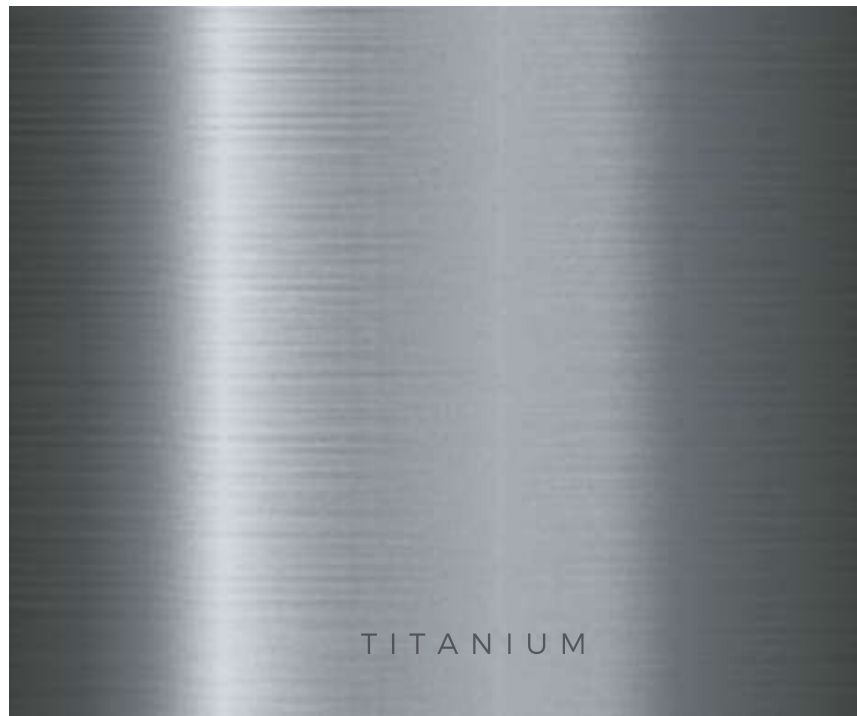
STAINLESS STEEL



COPPER



ALUMINUM



TITANIUM



WEATHERING STEEL



Architectural Zinc

As a part of our EcoChoice line products, Zinc is a sustainable material that does not harm the environment. Used for centuries, architects are taking a second look at zinc's unique properties and aesthetic qualities.

Architectural grade zinc is infinitely recyclable. Replacement costs are immaterial with a life spanning 80 - 100 years for roofing and 120+ years for wall systems.

Applications: Roof, Facade, Flashings, +Interior / Exterior Elements.

Finishes: Natural, Slate, Rainbow



Camp Southern Ground Dining Hall

Location: Fayetteville, GA

Project Type: Facade

System: Square Diamond Flat Lock Panels

Material: Zinc Slate

Architect: Perkins + Will Alloy





Thrasher + Supportworks HQ

Location: Papillion, NE

System: Flatlock Wall Panel, HV90 Corrugated Panel

Material: Zinc Slate

Architect: TACK Architects





Aluminum

Aluminum's superb ductility, lightweight, strength, and corrosion resistance in concert with its eco-friendly qualities and economic benefits have made this material a mainstream in construction for decades.

MetalTech Global provides natural aluminum products with a myriad of specialty finishes and colors to satisfy even the most ambitious design.

Applications: Roof, Facade + Interior/Exterior Elements

Finishes: Anodized, Powder Coated, + Painted



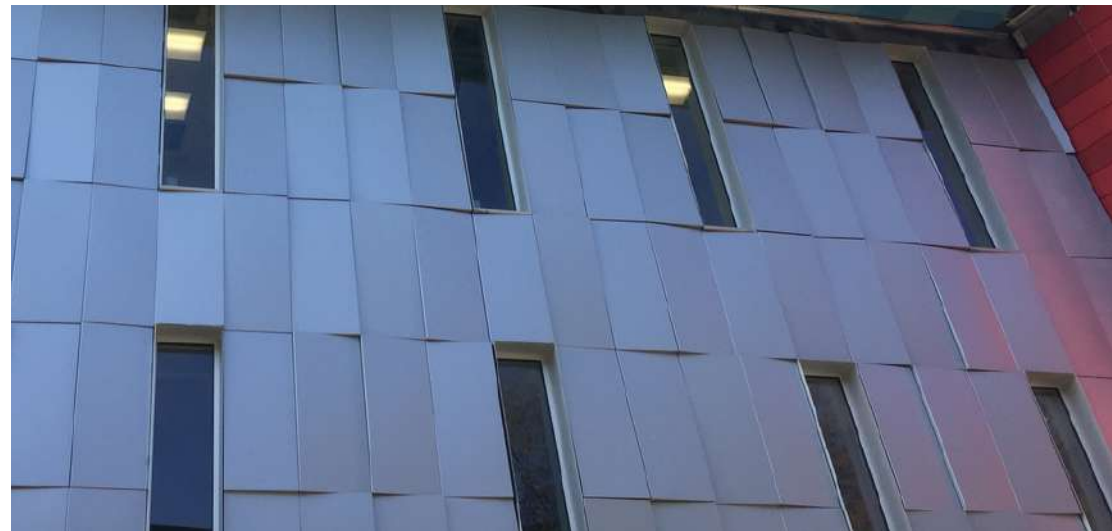
University of Louisville Pediatric Hospital

Location: Louisville, KY

System: Vertical Custom Reveal Panels with tapered face depths

Material: Pre-painted Aluminum

Architect: GBBN Architects





Owensboro Convention Center

Location: Owensboro, KY

Project Type: Facade and Soffit

System: Vertical Interlocking Reveal Panel

Material: Lorin BlackMatt Long Line Brush and ClearMatt Long Line Brush Aluminum

Architect: Trahan Architects





Copper

Copper has been used as an architectural cladding element for hundreds of years. Initially a bright metallic, copper reinvents its color as it patinas until its ultimate greenish verdigris forms. This patina serves as a protective coating affording the material its excellent corrosion resistance and durability.

Copper also possesses impressive anti-microbial properties, making it ideal for use in interior applications.

Applications: Roof, Facade, Flashings, +Interior/Exterior Elements
Finishes: Mill + Custom Patina



Venue (Mission Bay Block 3)

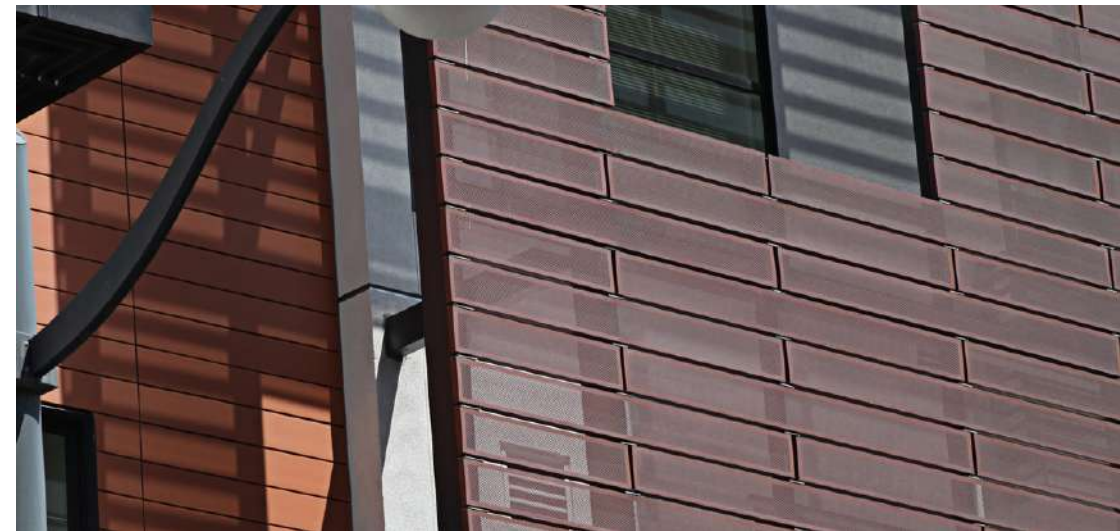
Location: San Francisco, CA

Project Type: Facade

System: Flatlock Panels and Perforated Sun Screen

Material: 0.0216" Copper Plus and Zinc Alloy

Architect: Steinberg / Seidel Architects





Titanium

Titanium, the "Rolls Royce" of architectural metals, is coveted by architects for its light weight, superior strength, and corrosion resistance.

Its long life and environmental immunity stem from the formation of a stable, highly adherent, protective surface oxide film. This protective film makes it possible for titanium to perform well even in the most aggressive environments.

Applications: Roof, Facade + Interior/Exterior Elements

Finishes: Mill-GI + Custom



3 Palms Project

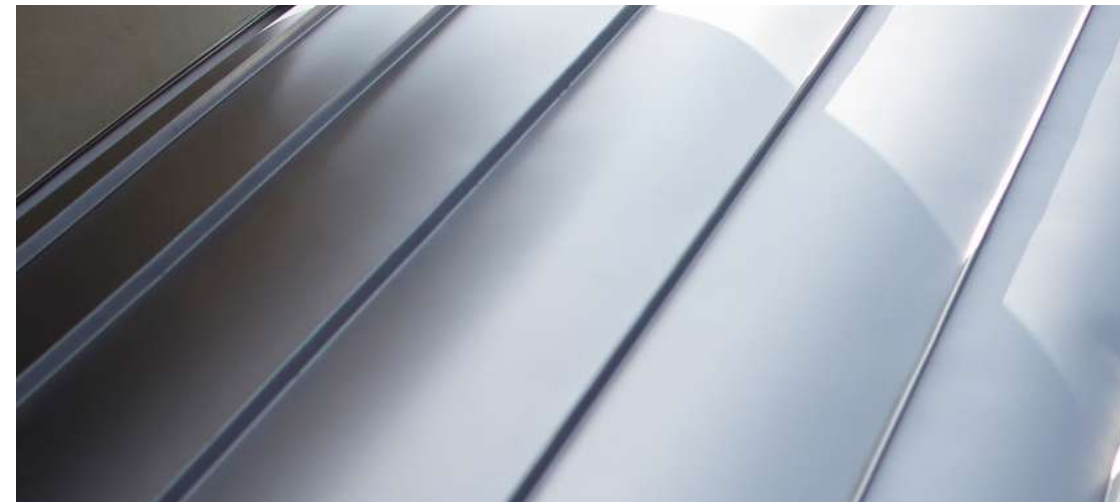
Location: Malibu, CA

Project Type: Facade

System: Double Lock Standing Seam

Material: Titanium

Architect: John Turturro of Turturro Design Studio





Weathering Steel

Weathering Steel, often referred to as Cor-Ten or A606, is a unique material gaining popularity as of late for its distinctive rust patina. This natural yet stable protective coating acts as a defense against further corrosion. Weathering steel arrives unrusted and develops a rust-like appearance once exposed to the elements for a period of time.

Applications: Facade + Interior/Exterior Elements

Finishes: Mil + Custom



THIS COLUMN STANDS
IN HONOR OF THE
COUNTLESS THOUSANDS
OF MEN, WOMEN, AND
CHILDREN WHO ARE
UNDOCUMENTED VICTIMS
OF RACIAL TERROR
LYNCHING. WHILE
WE HAVE COLLECTED
THEIR NAMES, DATES, AND
STORIES FOR MORE THAN
4,000 RACIAL TERROR
LYNCHINGS INSCRIBED
IN THIS MEMORIAL,
THE TRUE NUMBER OF
VICTIMS IS DRAMATICALLY
HIGHER. MANY LYNCHINGS
WERE UNREPORTED AND
NEVER DOCUMENTED,
ALTHOUGH THEIR NAMES
AND STORIES MAY NEVER
BE KNOWN, WE REMEMBER
AND MOURN ALL WHOSE
LIVES WERE LOST DURING
THIS TRAGIC ERA OF
RACIAL TERROR.



National Memorial for Peace and Justice

Location: Montgomery, Alabama

Project Type: Custom Art Project and Soffit elZinc Panels

System: Laser Perforated Cor-Ten

Material: 1ga A606 Weathering Steel

Architect: Mass Design Group





Stainless Steel

Stainless Steel has a natural beauty only outshined by its sustainability and eco-friendly qualities. This material has the ability to have a variety of finishes and techniques applied from perforation to metal burnishing. Known for its strength, high corrosion resistance, and aesthetic appearance, stainless steel provides a modern look for any building application.

Applications: Roof, Facade + Interior/Exterior Elements

Finishes: Mill #3 #4 Polish, 2B, 2D, Bright Annealed, + Custom



Embry Riddle Aeronautical University

Location: Daytona Beach, FL

Project Type: Facade (soffits)

System: Flatlock Panels

Material: Stainless steel 24 GA

Architect: Ikon.5 Architects



METALTECH GLOBAL

Solutions

Turning Vision Into Reality

www.metaltechglobal.com
marketing@metaltechglobal.com
Phone: 770.486.8825
385 Highway 74 S Suite 300
Peachtree City, GA 30269



