

Trapezoidal Hor. Wall Panel System Details

INDEX OF DRAWINGS

GENERAL DETAILS

MT_TWPH_1001 – Trapezoidal Wall Panel (Horizontal)
 MT_TWPH_1002 – Trapezoidal Wall Panel (Isometric)
 MT_TWPH_1003 – Trapezoidal Wall Assembly Section
 MT_TWPH_1004 – Trapezoidal Wall Assembly Plan
 MT_TWPH_1005 – Fasteners

TOP OF WALL DETAILS

MT_TWPH_1101 – Parapet Detail
 MT_TWPH_1102 – Wall To Soffit Transition

WINDOW DETAILS

MT_TWPH_1201 – Jamb Detail
 MT_TWPH_1202 – Head Detail
 MT_TWPH_1203 – Sill Detail

BOTTOM OF WALL DETAILS

MT_TWPH_1301 – Base Detail

INTERIOR DETAILS


MT_TWPH_1401 – Interior Corner

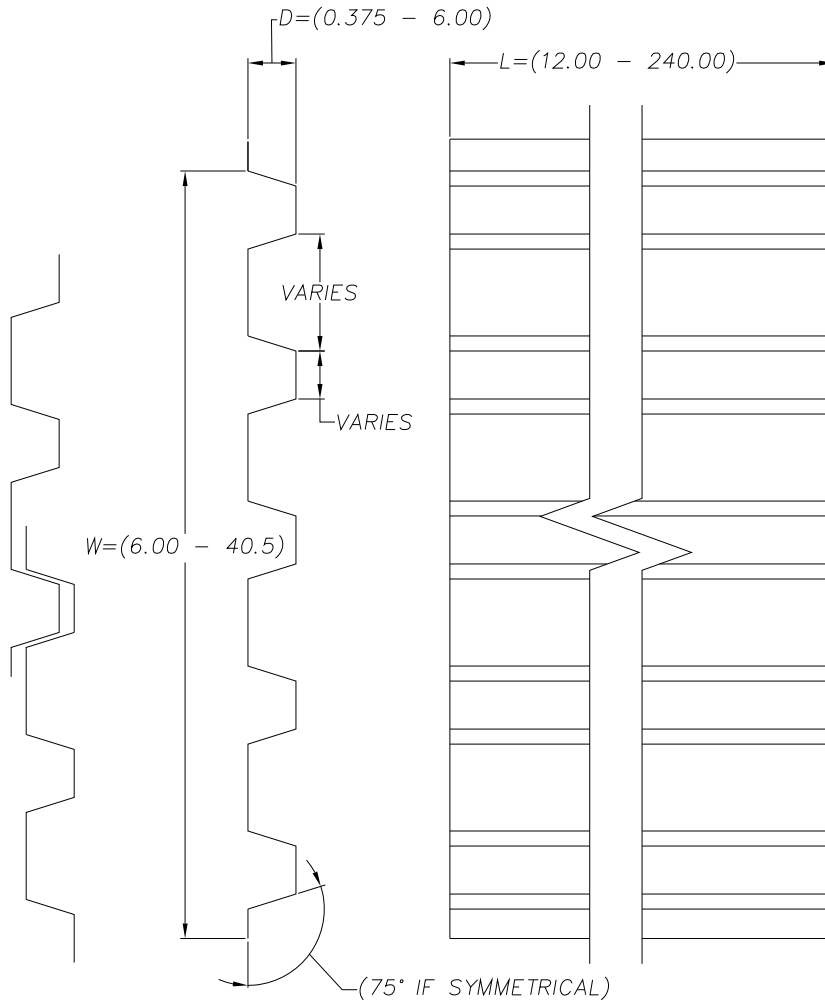
EXTERIOR DETAILS

MT_TWPH_1501 – Exterior Corner


NOTE:

Information and details are only a baseline for system and installation. Modification to meet project requirement is the responsibility of the designer, architect and contractor. MetalTech Global project staff are available to assist throughout the design and build process. © MetalTech Global. All rights reserved.

UNLESS OTHERWISE SPECIFIED DIMENSIONS ARE IN INCHES	DRAWING NAME: INDEX	REVISION NO: A	DATED CREATED: 10/09/2014
	DWG NO: MT_TWPH_0000	CHECKED BY: ESIMONSEN	APPROVED BY: ESIMONSEN
	PROJECT NAME: INDEX		
	SCALE: NTS	SHEET NO: 1 OF 1	SIZE: A TOLERANCES: ANGULAR ±1° LINEAR ±0.06

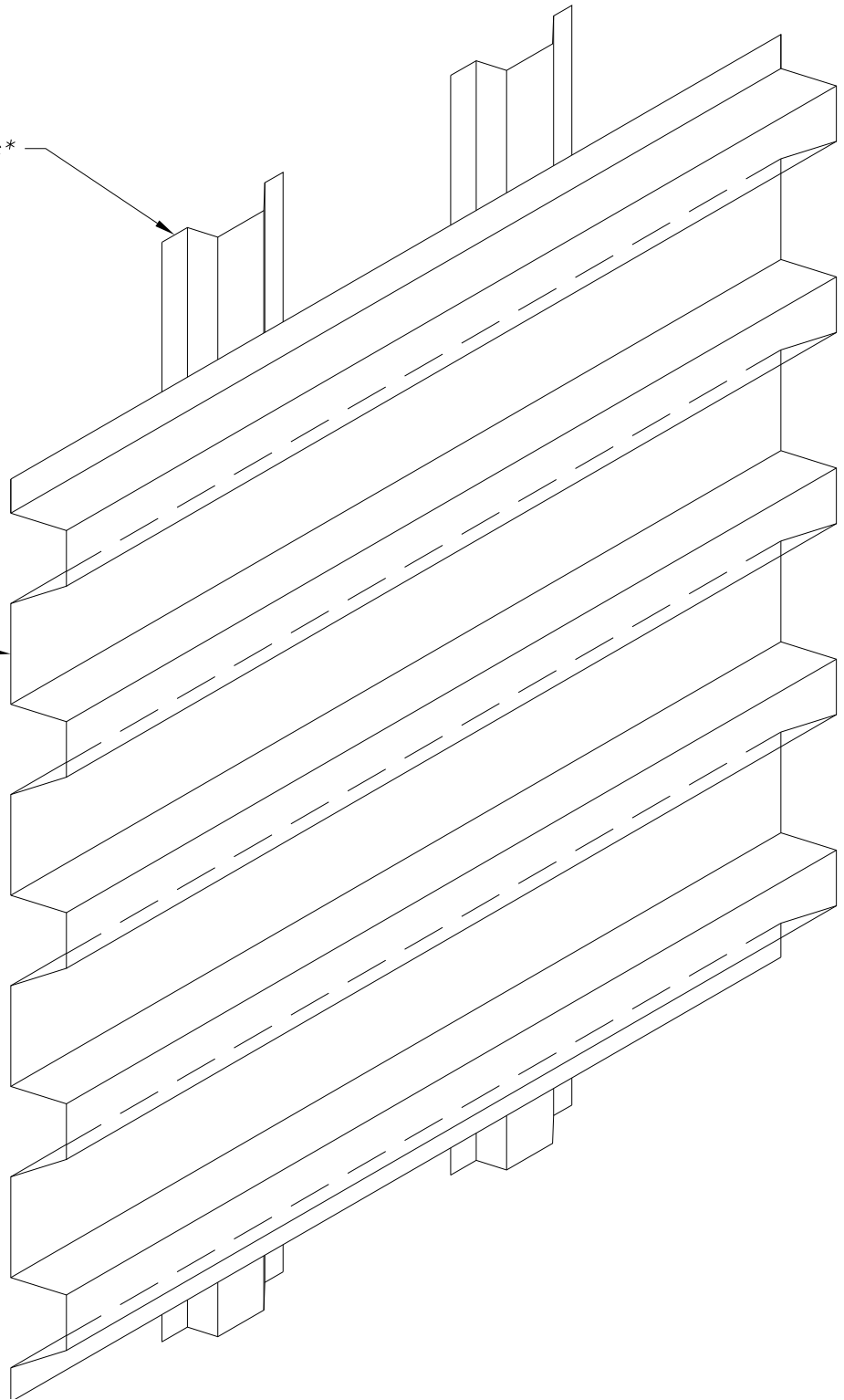


NOTE:
 Information and details are only a baseline for system and installation. Modification to meet project requirement is the responsibility of the designer, architect and contractor. MetalTech Global project staff are available to assist throughout the design and build process. © MetalTech Global. All rights reserved.

 <p>METALTECH Global <small>a Forza Group Company</small> DESIGNING STRENGTH</p>	UNLESS OTHERWISE SPECIFIED DIMENSIONS ARE IN INCHES		DRAWING NAME: TRAPEZOIDAL WALL PANEL (HORIZONTAL)	REVISION NO: A	DATED CREATED: 10/09/2014
	DWG NO: MT_TWPH_1001	PROJECT NAME: GENERAL DETAILS	CHECKED BY: ESIMONSEN	APPROVED BY: ESIMONSEN	SCALE: NTS
		SIZE: A	TOLERANCES: ANGULAR $\pm 1^\circ$ LINEAR ± 0.06		

Hat channel or "z" girts*

Trapezoidal wall panel *



NOTE:

Information and details are only a baseline for system and installation. Modification to meet project requirement is the responsibility of the designer, architect and contractor. MetalTech Global project staff are available to assist throughout the design and build process. © MetalTech Global. All rights reserved.

UNLESS OTHERWISE SPECIFIED
DIMENSIONS ARE IN INCHES

DRAWING NAME:
TRAPEZOIDAL WALL PANEL (ISOMETRIC)

REVISION NO:
-

DATED CREATED:
10/09/2014

DWG NO:
MT_TWPH_1002

CHECKED BY:
ESIMONSEN

APPROVED BY:
ESIMONSEN



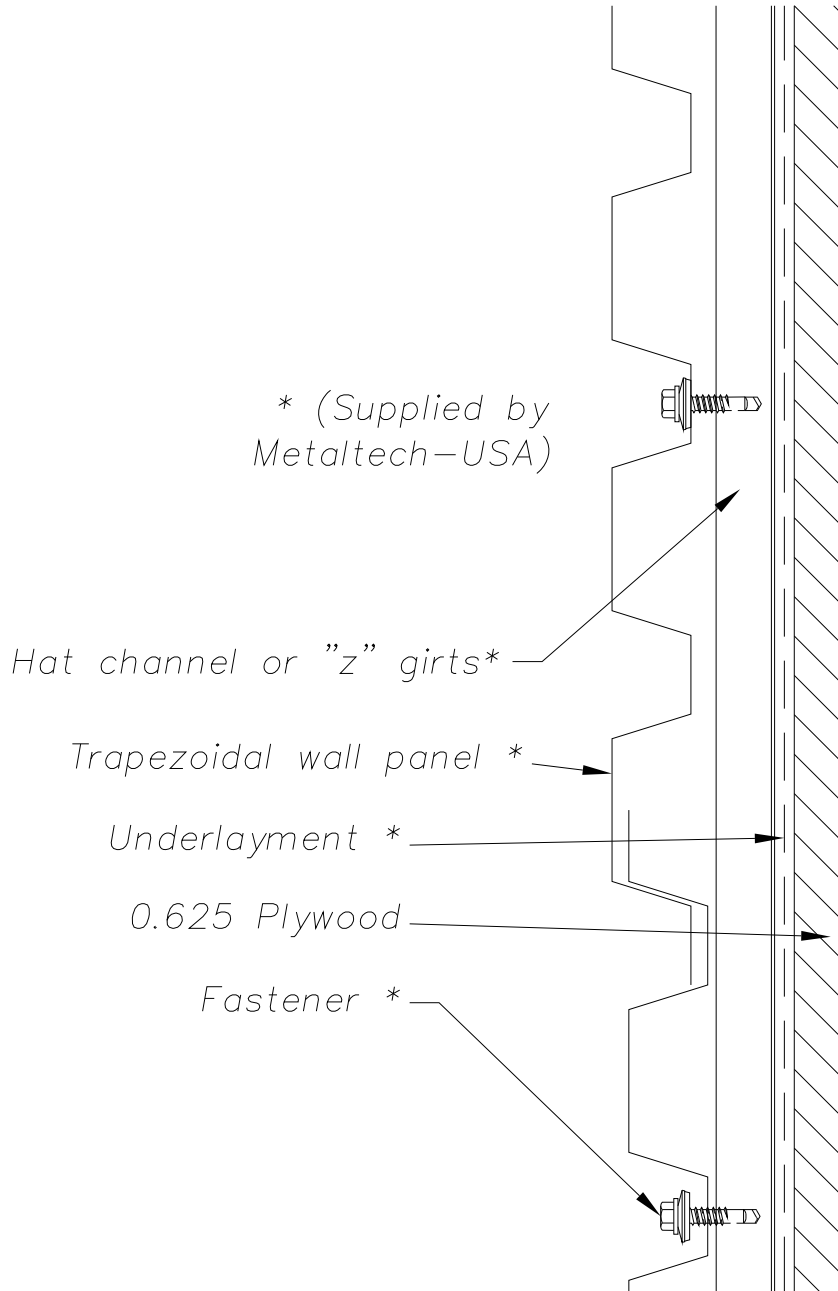
PROJECT NAME:
GENERAL DETAILS

SCALE:
NTS


SHEET NO:
2 OF 5

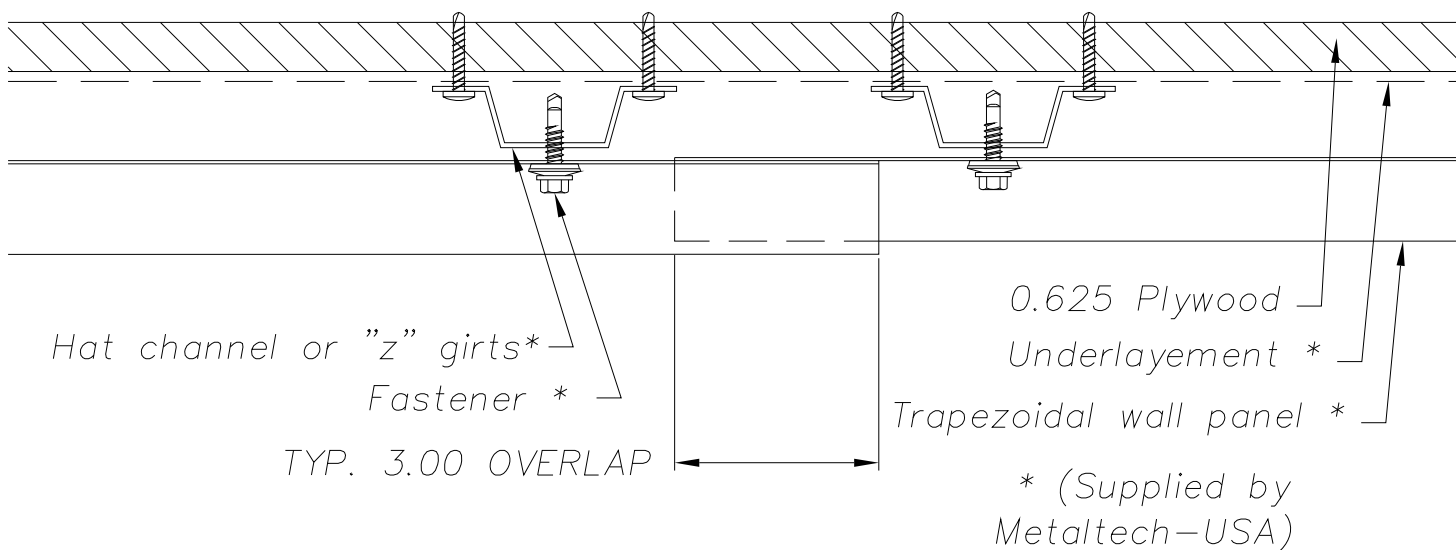
SIZE:
A

TOLERANCES:
ANGULAR ±1° LINEAR ±0.06



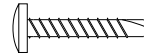
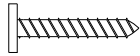
NOTE:
 Information and details are only a baseline for system and installation. Modification to meet project requirement is the responsibility of the designer, architect and contractor. MetalTech Global project staff are available to assist throughout the design and build process. © MetalTech Global. All rights reserved.

UNLESS OTHERWISE SPECIFIED DIMENSIONS ARE IN INCHES	DRAWING NAME: TRAPEZOIDAL WALL ASSEMBLY SECTION	REVISION NO: A	DATED CREATED: 10/09/2014
	DWG NO: MT_TWPH_1003	CHECKED BY: ESIMONSEN	APPROVED BY: ESIMONSEN
	PROJECT NAME: GENERAL DETAILS		
SCALE: NTS	SHEET NO: 3 OF 5	SIZE: A	TOLERANCES: ANGULAR ±1° LINEAR ±0.06



NOTE:
 Information and details are only a baseline for system and installation. Modification to meet project requirement is the responsibility of the designer, architect and contractor. MetalTech Global project staff are available to assist throughout the design and build process. © MetalTech Global. All rights reserved.

UNLESS OTHERWISE SPECIFIED DIMENSIONS ARE IN INCHES 	DRAWING NAME: TRAPEZOIDAL WALL ASSEMBLY PLAN		REVISION NO: A	DATED CREATED: 10/09/2014
	DWG NO: MT_TWPH_1004		CHECKED BY: ESIMONSEN	APPROVED BY: ESIMONSEN
PROJECT NAME: GENERAL DETAILS				
SCALE: NTS	SHEET NO: 4 OF 5	SIZE: A	TOLERANCES: ANGULAR ±1° LINEAR ±0.06	




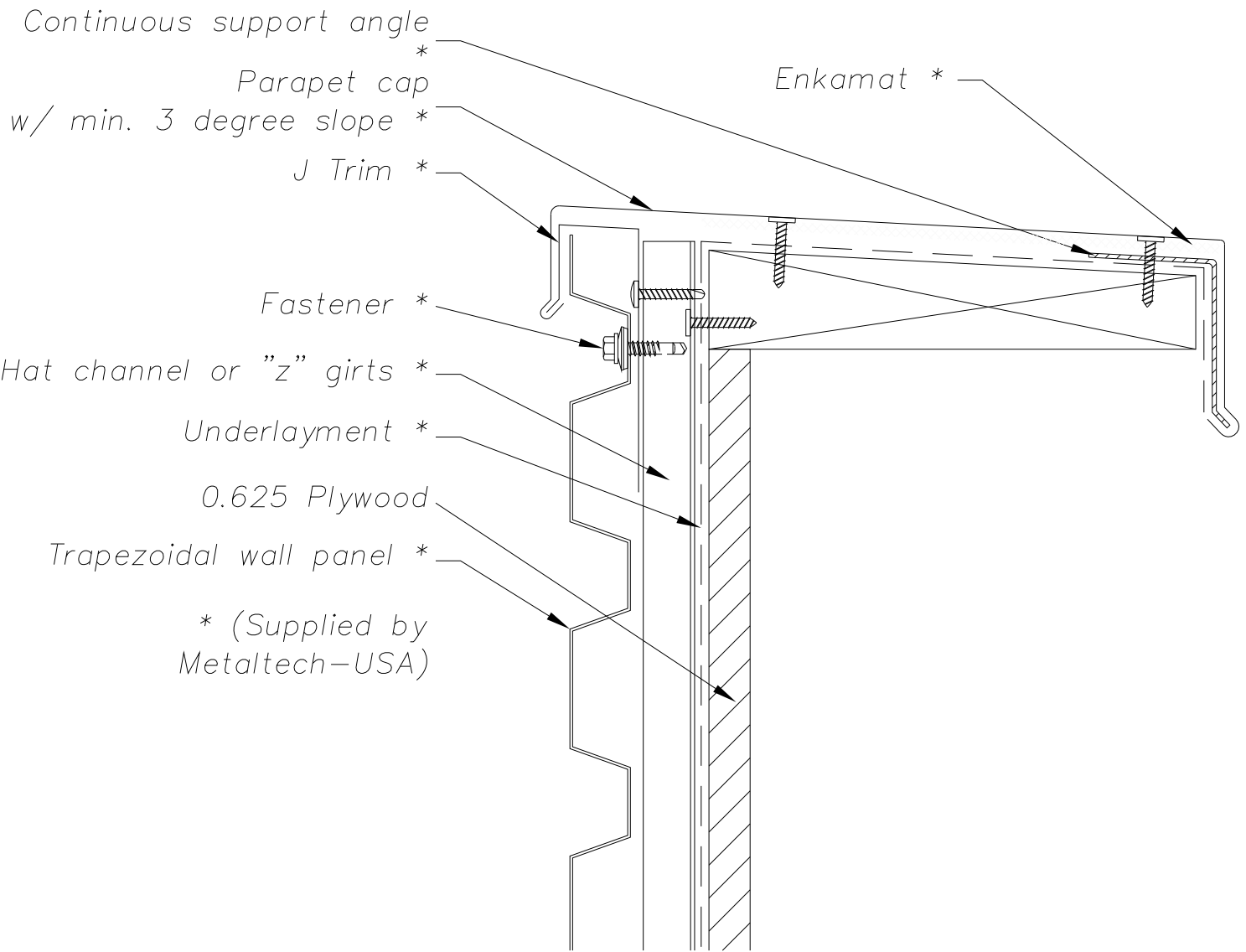
MT101
Wood Applications

MT101SX3
Sheet Metal Applications


NOTE:

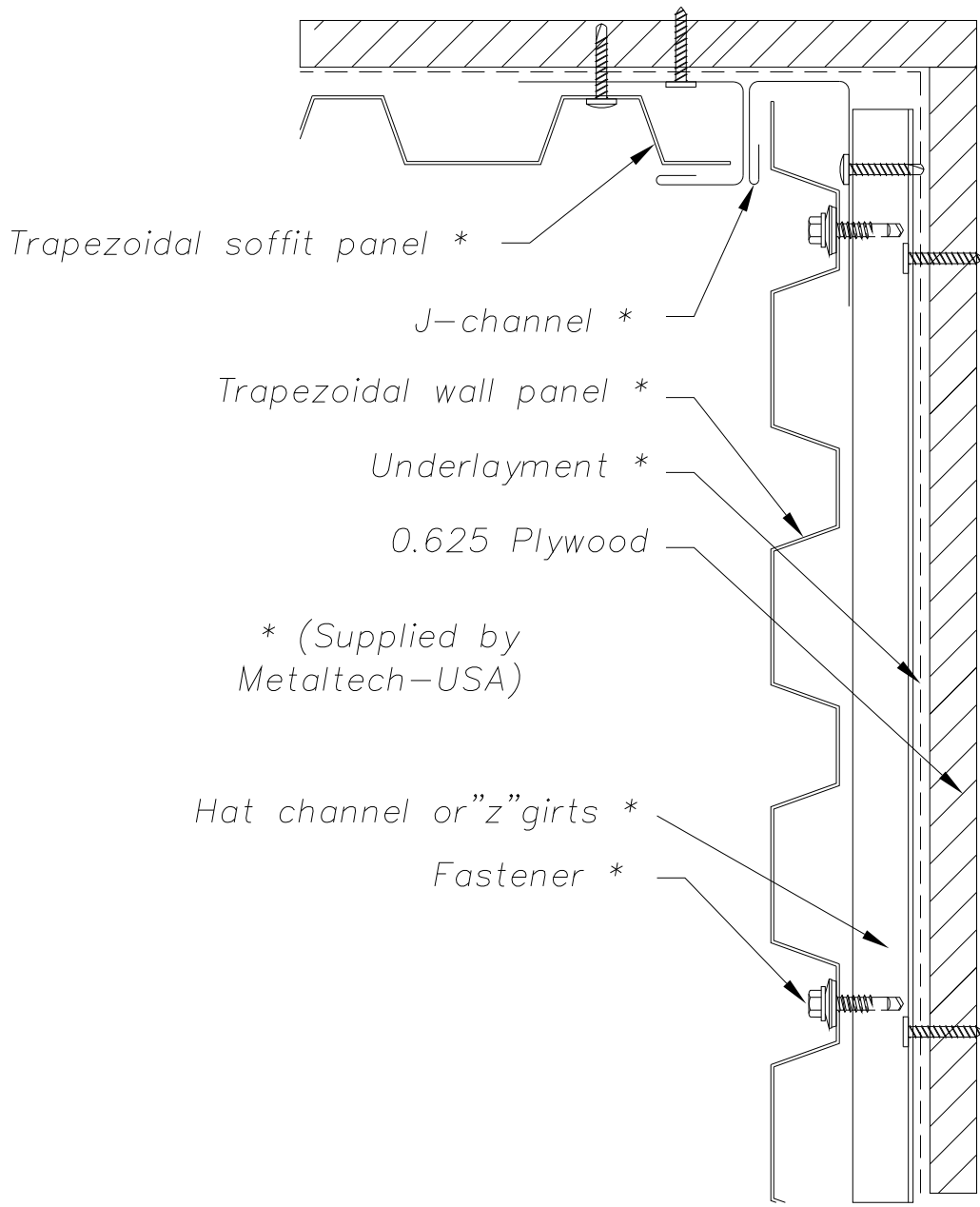
Information and details are only a baseline for system and installation. Modification to meet project requirement is the responsibility of the designer, architect and contractor. MetalTech Global project staff are available to assist throughout the design and build process. © MetalTech Global. All rights reserved.

UNLESS OTHERWISE SPECIFIED DIMENSIONS ARE IN INCHES	DRAWING NAME: FASTENERS		REVISION NO: A	DATED CREATED: 10/09/2014
	DWG NO: MT_TWPH_1005		CHECKED BY: ESIMONSEN	APPROVED BY: ESIMONSEN
	PROJECT NAME: GENERAL DETAILS			
	SCALE: NTS	SHEET NO: 5 OF 5	SIZE: A	TOLERANCES: ANGULAR ±1° LINEAR ±0.06



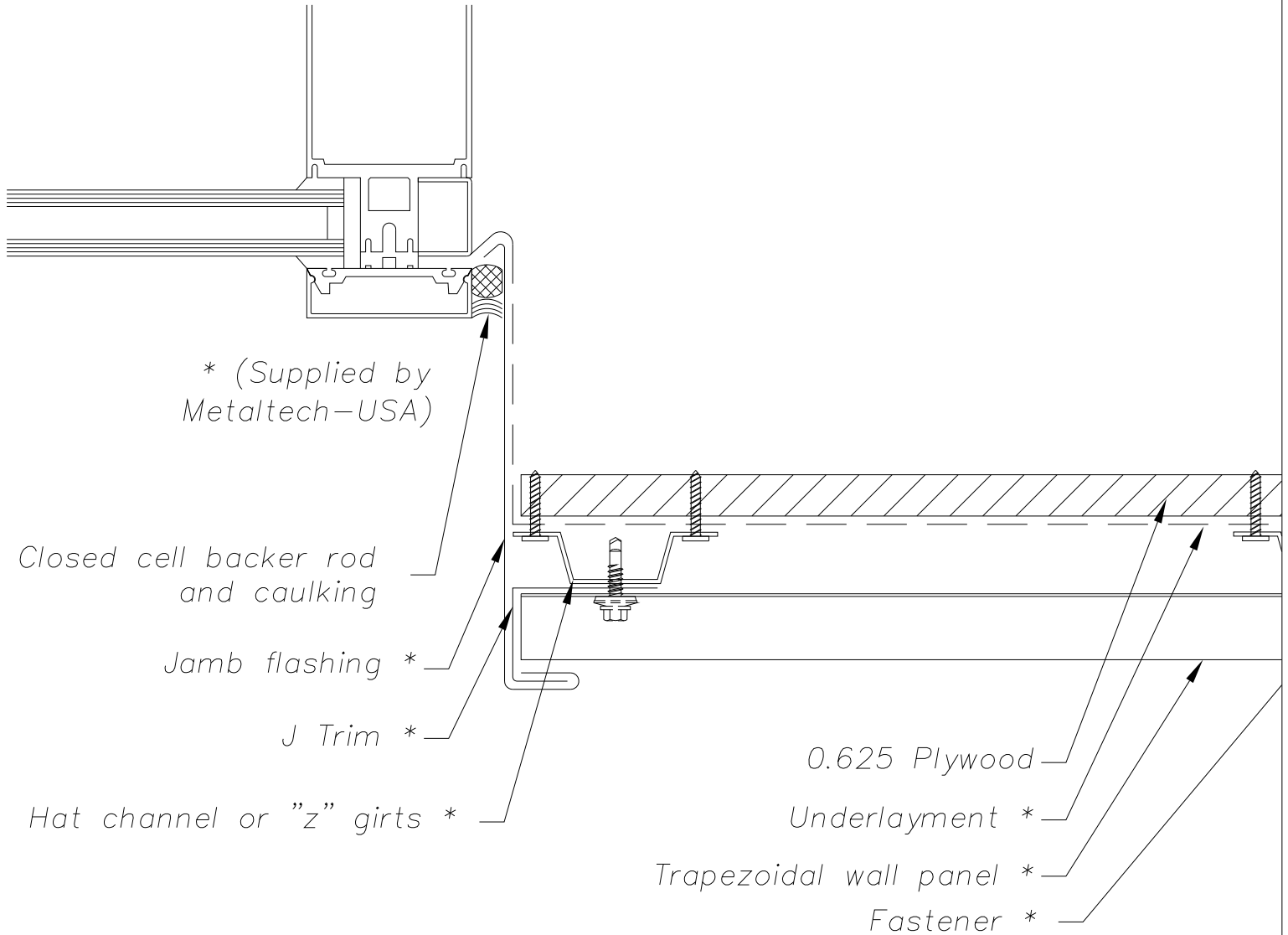
NOTE:
 Information and details are only a baseline for system and installation. Modification to meet project requirement is the responsibility of the designer, architect and contractor. MetalTech Global project staff are available to assist throughout the design and build process. © MetalTech Global. All rights reserved.

 <p>METALTECH Global <small>a Forza Group Company</small> DESIGNING STRENGTH</p>	UNLESS OTHERWISE SPECIFIED DIMENSIONS ARE IN INCHES		DRAWING NAME: PARAPET DETAIL	REVISION NO: A	DATED CREATED: 10/09/2014
	DWG NO: MT_TWPH_1101		CHECKED BY: ESIMONSEN		APPROVED BY: ESIMONSEN
PROJECT NAME: TOP OF WALL DETAILS					
SCALE: NTS	SHEET NO: 1 OF 2	SIZE: A	TOLERANCES: ANGULAR ±1° LINEAR ±0.06		




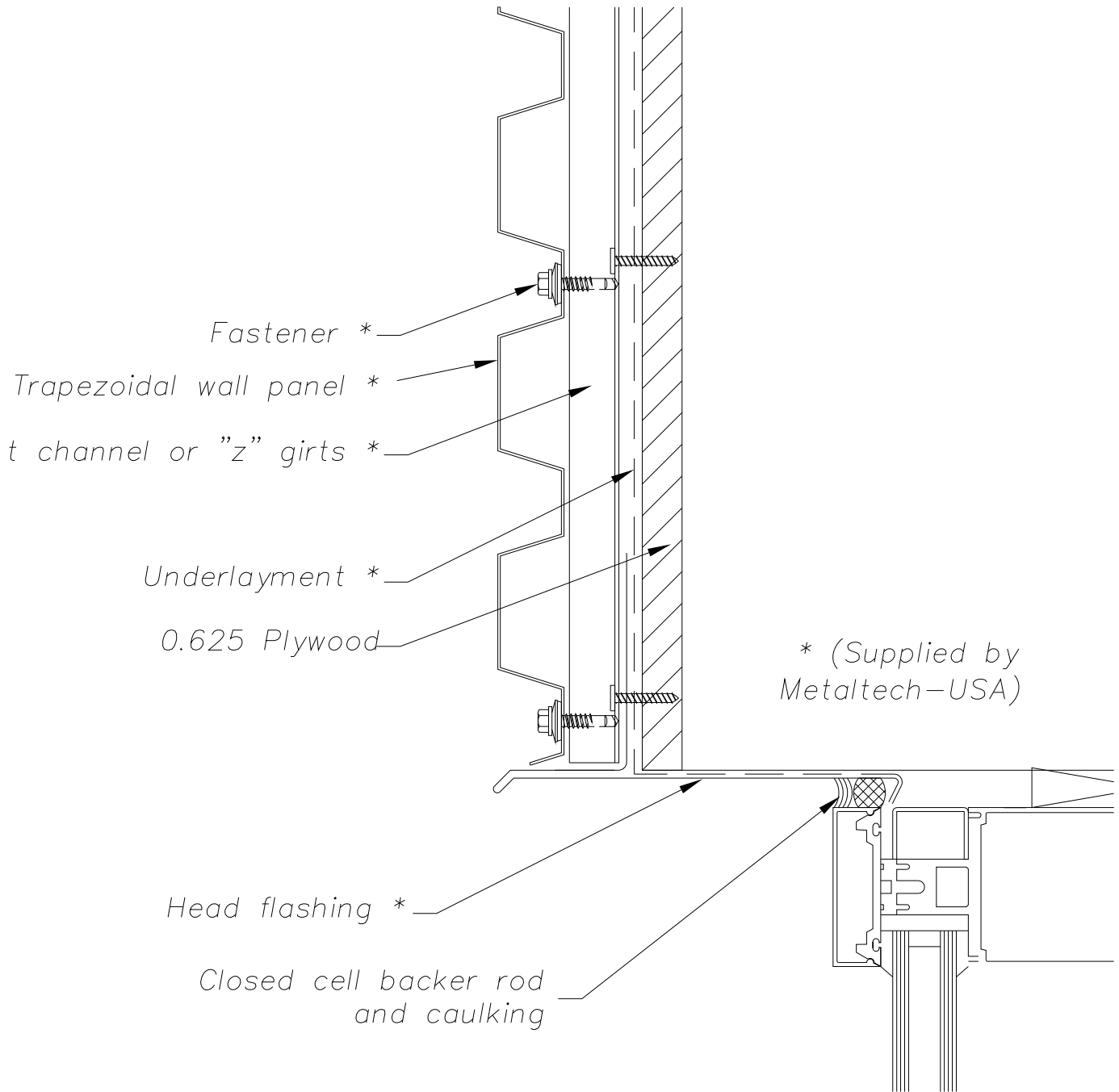
NOTE:
 Information and details are only a baseline for system and installation. Modification to meet project requirement is the responsibility of the designer, architect and contractor. MetalTech Global project staff are available to assist throughout the design and build process. © MetalTech Global. All rights reserved.

UNLESS OTHERWISE SPECIFIED DIMENSIONS ARE IN INCHES	DRAWING NAME: WALL TO SOFFIT TRANSITION		REVISION NO: -	DATED CREATED: 10/09/2014	
	DWG NO: MT_TWPH_1102		CHECKED BY: ESIMONSEN	APPROVED BY: ESIMONSEN	
	PROJECT NAME: TOP OF WALL DETAILS				
	SCALE: NTS	SHEET NO: 2 OF 2	SIZE: A	TOLERANCES: ANGULAR ±1° LINEAR ±0.06	



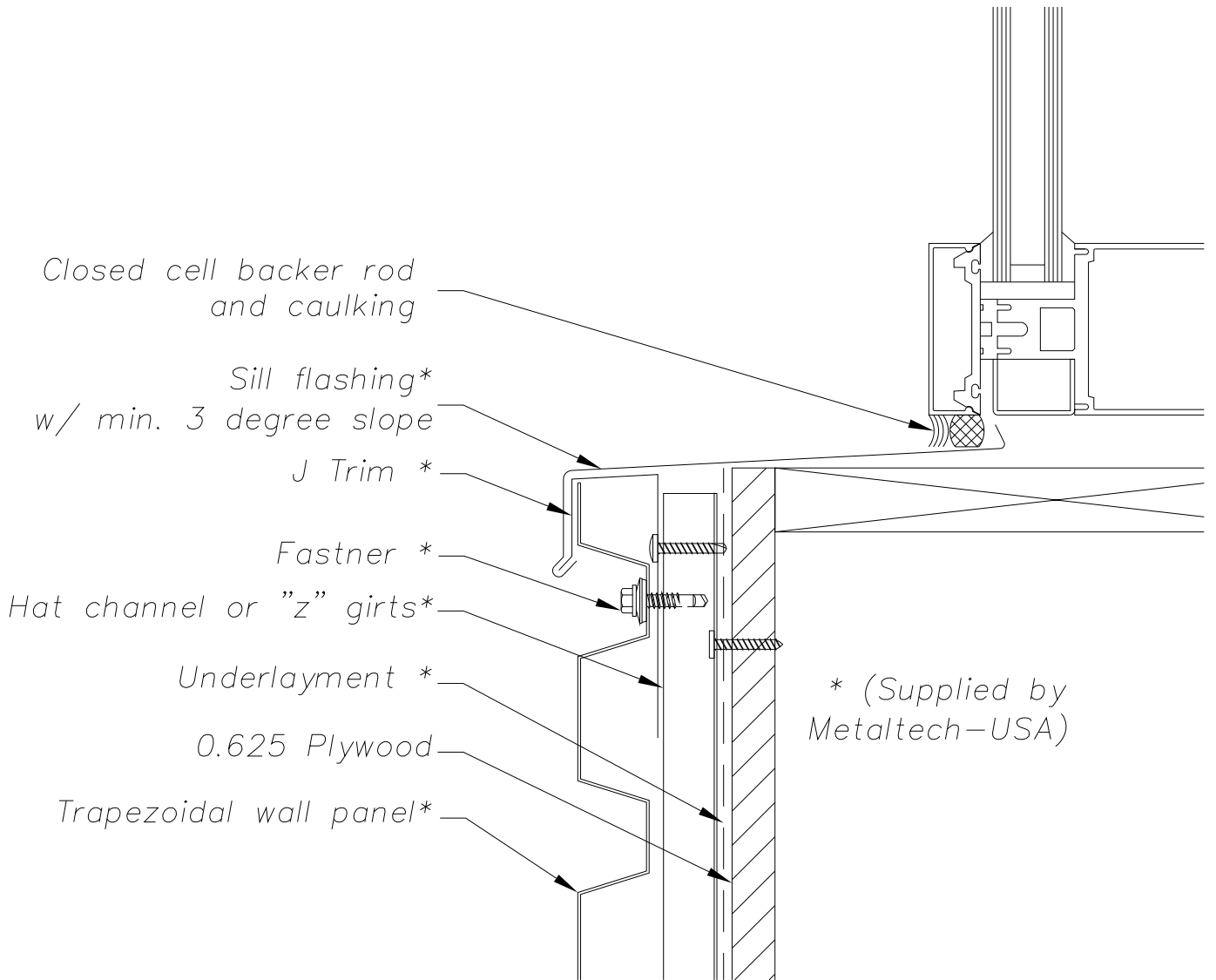
NOTE:
 Information and details are only a baseline for system and installation. Modification to meet project requirement is the responsibility of the designer, architect and contractor. MetalTech Global project staff are available to assist throughout the design and build process. © MetalTech Global. All rights reserved.

UNLESS OTHERWISE SPECIFIED DIMENSIONS ARE IN INCHES	DRAWING NAME: JAMB DETAIL	REVISION NO: A	DATED CREATED: 10/09/2014
	DWG NO: MT_TWPH_1201	CHECKED BY: ESIMONSEN	APPROVED BY: ESIMONSEN
	PROJECT NAME: WINDOW DETAILS		
SCALE: NTS	SHEET NO: 1 OF 3	SIZE: A	TOLERANCES: ANGULAR ±1° LINEAR ±0.06



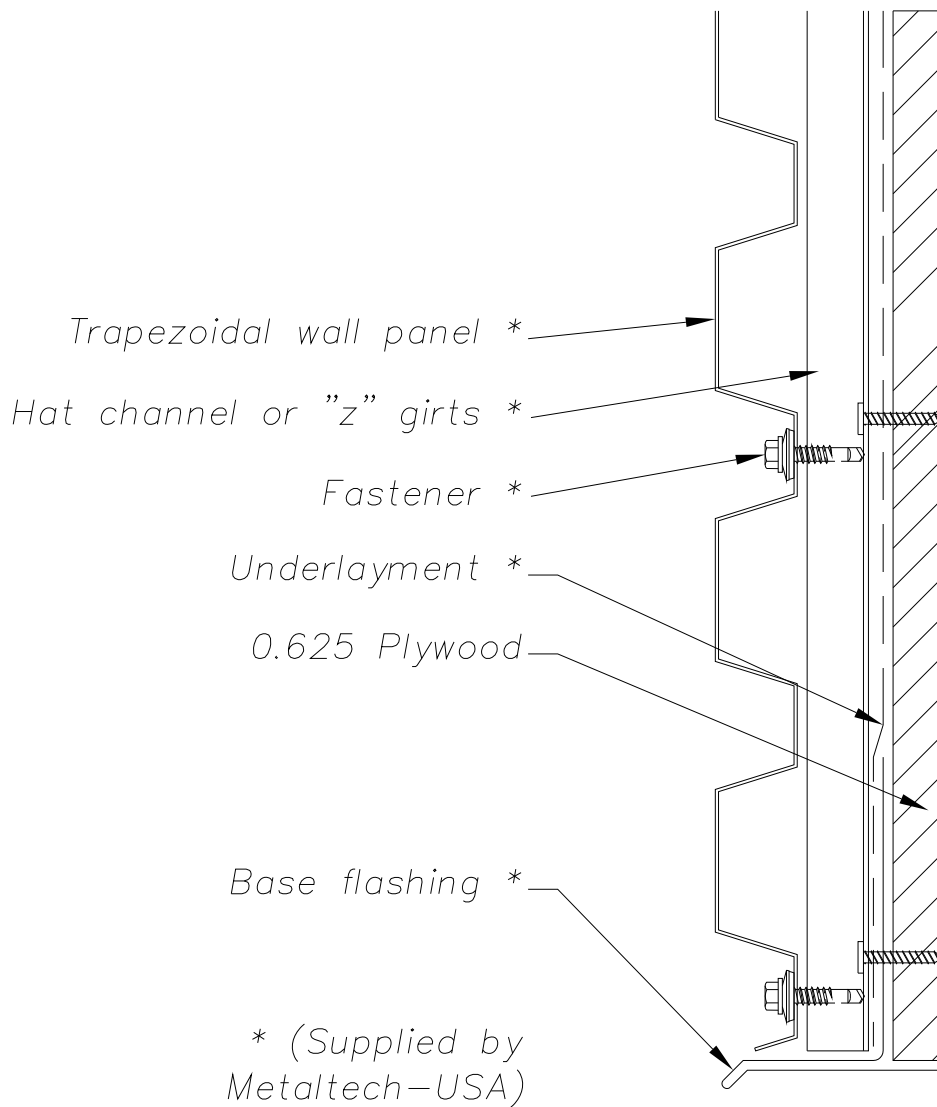
NOTE:
 Information and details are only a baseline for system and installation. Modification to meet project requirement is the responsibility of the designer, architect and contractor. MetalTech Global project staff are available to assist throughout the design and build process. © MetalTech Global. All rights reserved.

	DRAWING NAME: HEAD DETAIL		REVISION NO: A	DATED CREATED: 10/09/2014
	DWG NO: MT_TWPH_1202		CHECKED BY: ESIMONSEN	APPROVED BY: ESIMONSEN
PROJECT NAME: WINDOW DETAILS				
SCALE: NTS	SHEET NO: 2 OF 3	SIZE: A	TOLERANCES: ANGULAR $\pm 1'$ LINEAR ± 0.06	



NOTE:
 Information and details are only a baseline for system and installation. Modification to meet project requirement is the responsibility of the designer, architect and contractor. MetalTech Global project staff are available to assist throughout the design and build process. © MetalTech Global. All rights reserved.

	DRAWING NAME: SILL DETAIL		REVISION NO: A	DATED CREATED: 10/09/2014
	DWG NO: MT_TWPH_1203		CHECKED BY: ESIMONSEN	APPROVED BY: ESIMONSEN
	PROJECT NAME: WINDOW DETAILS			
	SCALE: NTS	SHEET NO: 3 OF 3	SIZE: A	TOLERANCES: ANGULAR ±1° LINEAR ±0.06



NOTE: Base flashing not to exceed 1.75 inches unless installed with a stiffener

NOTE:
 Information and details are only a baseline for system and installation. Modification to meet project requirement is the responsibility of the designer, architect and contractor. MetalTech Global project staff are available to assist throughout the design and build process. © MetalTech Global. All rights reserved.

	DRAWING NAME: BASE DETAIL		REVISION NO: A	DATED CREATED: 10/09/2014
	DWG NO: MT_TWPH_1301		CHECKED BY: ESIMONSEN	APPROVED BY: ESIMONSEN
PROJECT NAME: BOTTOM OF WALL DETAILS				
SCALE: NTS	SHEET NO: 1 OF 1	SIZE: A	TOLERANCES: ANGULAR ±1° LINEAR ±0.06	

Trapezoidal wall panels *

Hat channel or "z" girts *

Fastener *

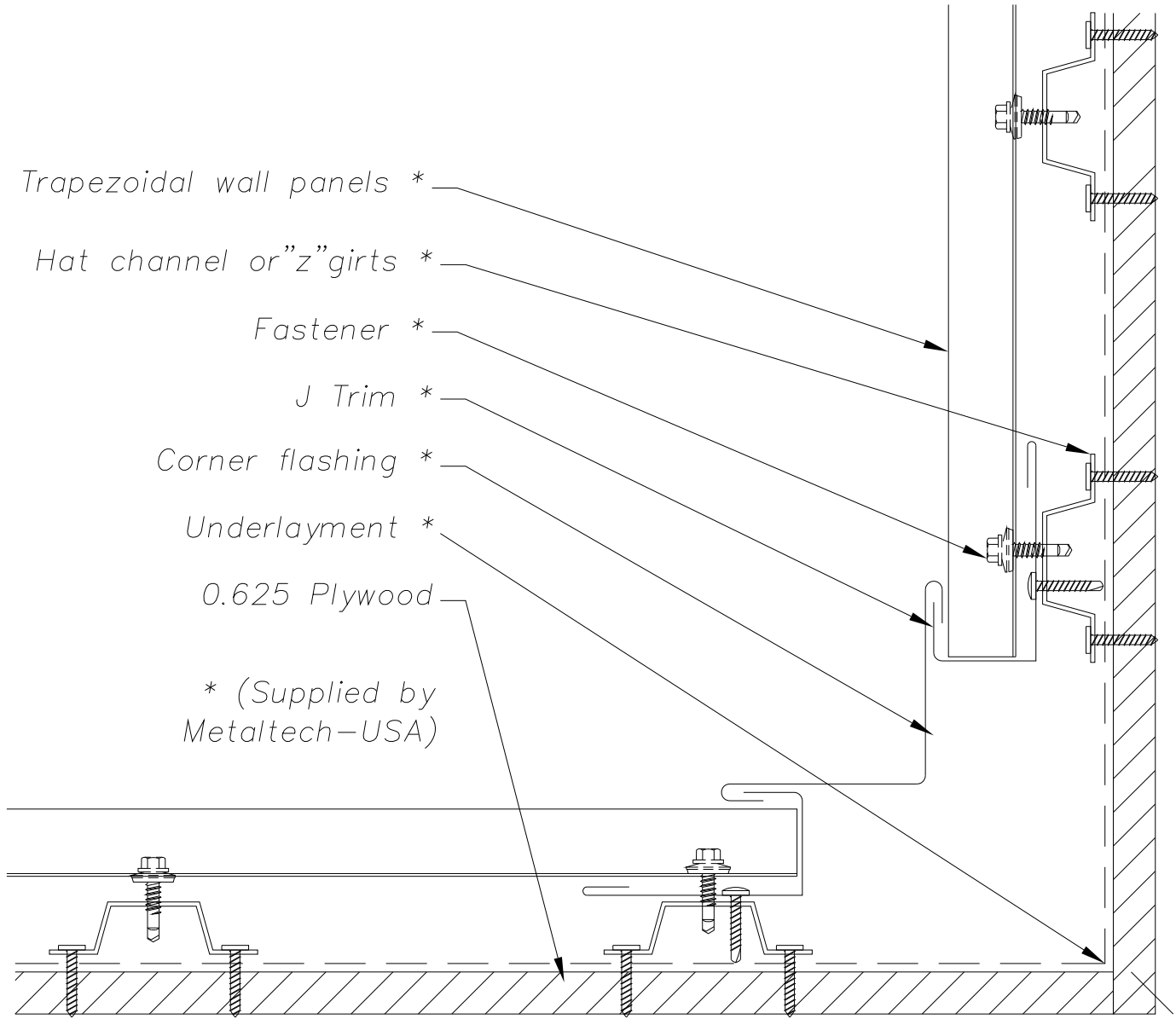
J Trim *

Corner flashing *

Underlayment *

0.625 Plywood

* (Supplied by Metaltech-USA)



NOTE:

Information and details are only a baseline for system and installation. Modification to meet project requirement is the responsibility of the designer, architect and contractor. MetalTech Global project staff are available to assist throughout the design and build process. © MetalTech Global. All rights reserved.

UNLESS OTHERWISE SPECIFIED
DIMENSIONS ARE IN INCHES

DRAWING NAME:
INTERIOR CORNER

REVISION NO:
A

DATED CREATED:
10/09/2014

DWG NO:
MT_TWPH_1401

CHECKED BY:
ESIMONSEN

APPROVED BY:
ESIMONSEN

PROJECT NAME:
INTERIOR DETAILS

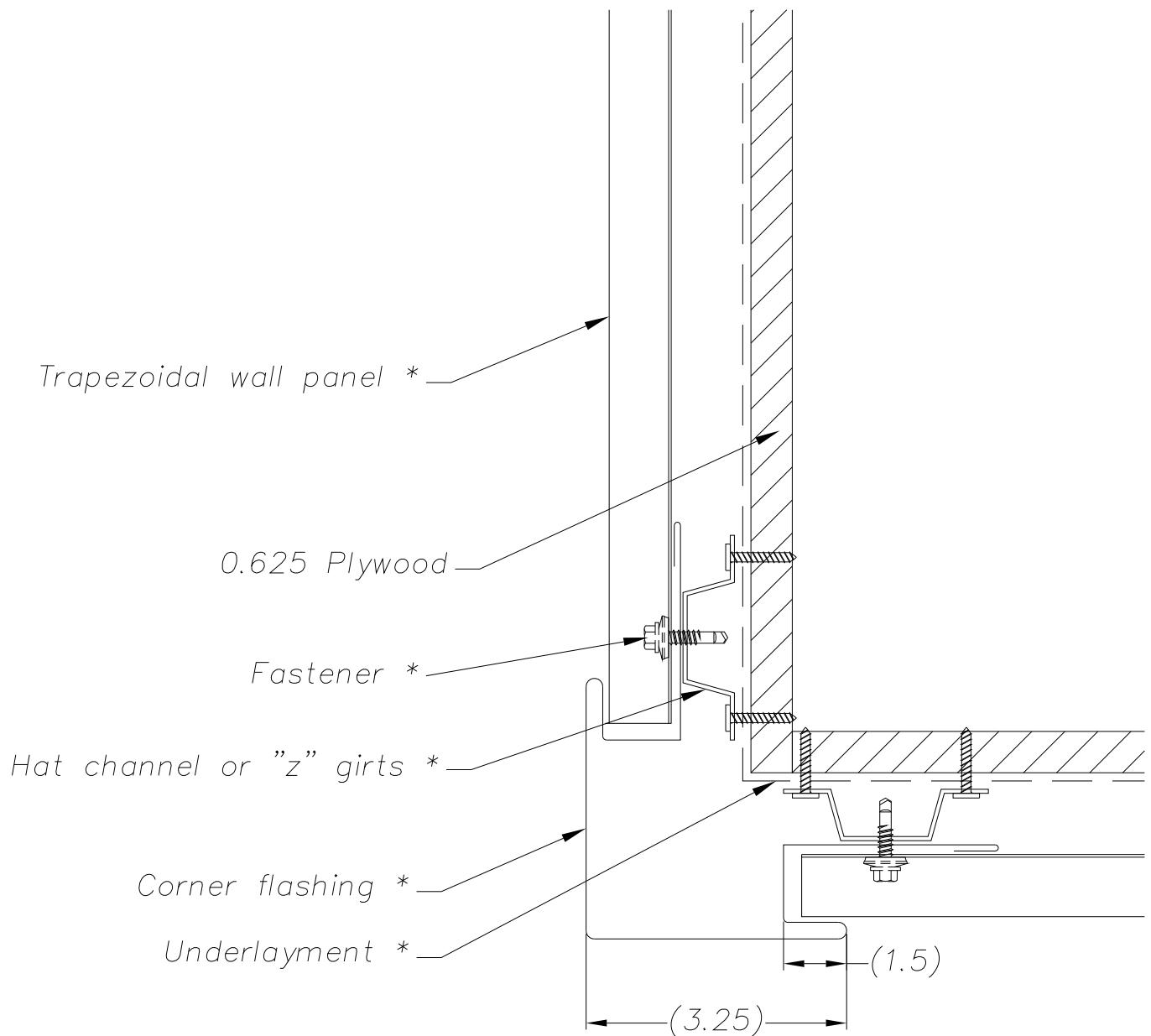
SCALE:
NTS

SHEET NO:
1 OF 1

SIZE:
A

TOLERANCES:
ANGULAR ±1° LINEAR ±0.06





* (Supplied by Metaltech-USA)

NOTE: Minimum difference between exposed corner width and pocket depth equal 1 3/4"

NOTE: Information and details are only a baseline for system and installation. Modification to meet project requirement is the responsibility of the designer, architect and contractor. MetalTech Global project staff are available to assist throughout the design and build process. © MetalTech Global. All rights reserved.

	DRAWING NAME: EXTERIOR CORNER		REVISION NO: A	DATED CREATED: 10/09/2014
	DWG NO: MT_TWPH_1501		CHECKED BY: ESIMONSEN	APPROVED BY: ESIMONSEN
PROJECT NAME: EXTERIOR DETAILS				
SCALE: NTS	SHEET NO: 1 OF 1	SIZE: A	TOLERANCES: ANGULAR ±1° LINEAR ±0.06	