

Strata Reveal Panel System

INDEX OF DRAWINGS

GENERAL DETAILS

MT_STRPH_1001 – Strata Reveal Panel (Horizontal)
 MT_STRPH_1002 – Strata Reveal Panel (Isometric)
 MT_STRPH_1003 – Reveal Detail – Option 1
 MT_STRPH_1004 – Reveal Detail – Option 2
 MT_STRPH_1005 – Reveal Detail – Option 3
 MT_STRPH_1006 – Reveal Detail – Option 4
 MT_STRPH_1007 – Reveal Options (Isometric)

TOP OF WALL DETAILS

MT_STRPH_1101 – Parapet Detail – Option 1
 MT_STRPH_1102 – Parapet Detail – Option 2
 MT_STRPH_1103 – Parapet Detail – Option 3
 MT_STRPH_1104 – Wall To Soffit Transition
 MT_STRPH_1105 – Soffit To Fascia Transition

WINDOW DETAILS

MT_STRPH_1201 – Sill Detail – Option 1
 MT_STRPH_1202 – Sill Detail – Option 2
 MT_STRPH_1203 – Sill Detail – Option 3
 MT_STRPH_1204 – Jamb Detail – Option 1
 MT_STRPH_1205 – Jamb Detail – Option 2
 MT_STRPH_1206 – Jamb Detail – Option 3
 MT_STRPH_1207 – Head Detail – Option 1
 MT_STRPH_1208 – Head Detail – Option 2
 MT_STRPH_1209 – Head Detail – Option 3
 MT_STRPH_1210 – Head Detail – Option 4

BOTTOM OF WALL DETAILS

MT_STRPH_1301 – Base Detail – Option 1
 MT_STRPH_1302 – Base Detail – Option 2

INTERIOR DETAILS

MT_STRPH_1401 – Interior Corner – Option 1
 MT_STRPH_1402 – Interior Corner – Option 2
 MT_STRPH_1403 – Interior Corner – Option 3

EXTERIOR DETAILS

MT_STRPH_1501 – Exterior Corner – Option 1
 MT_STRPH_1502 – Exterior Corner – Option 2
 MT_STRPH_1503 – Exterior Corner – Option 3
 MT_STRPH_1504 – Exterior Corner – Option 4

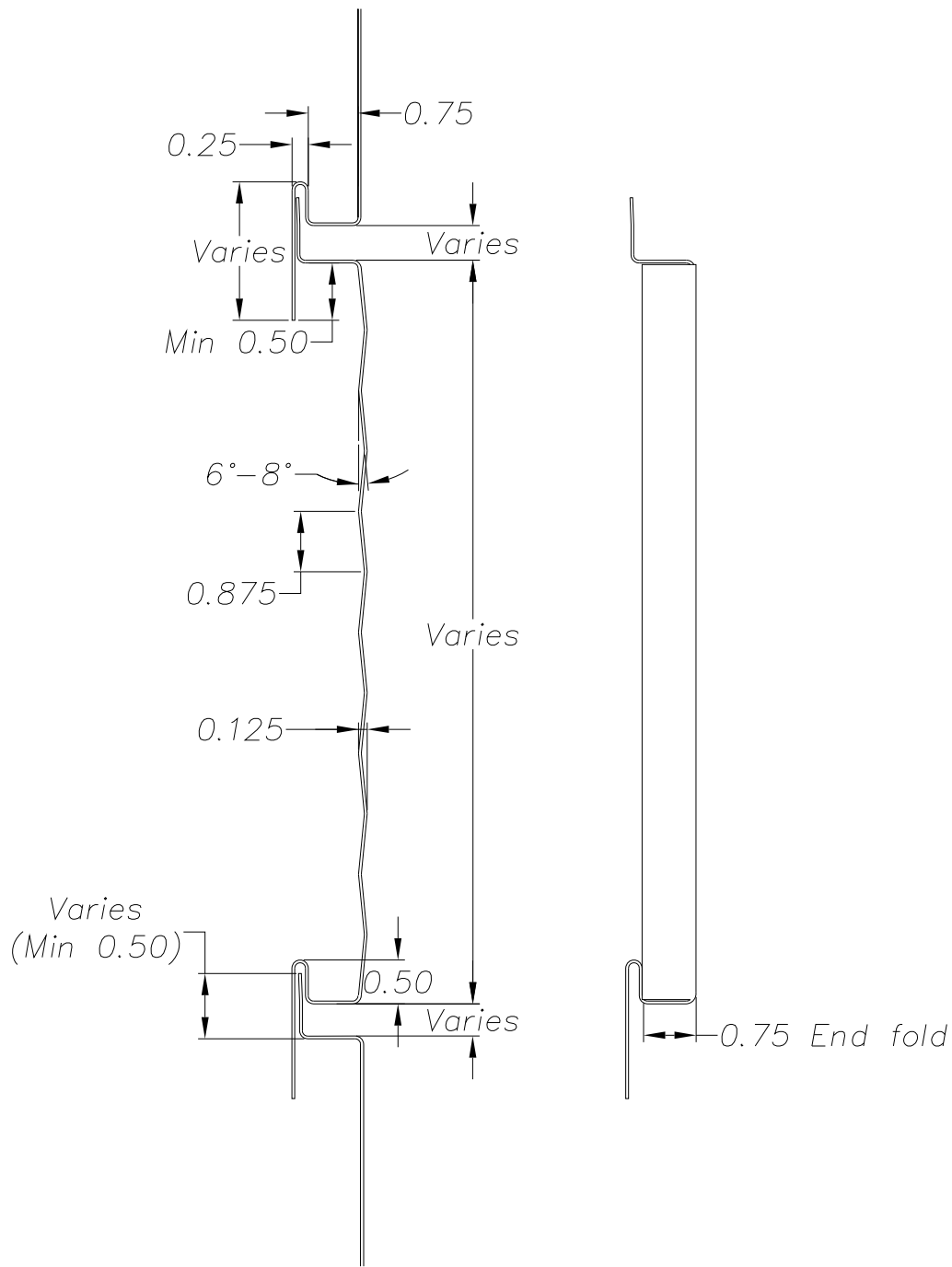
END OF WALL DETAILS

MT_STRPH_1601 – End Of Wall Detail

NOTE:

Information and details are only a baseline for system and installation. Modification to meet project requirement is the responsibility of the designer, architect and contractor. MetalTech Global project staff are available to assist throughout the design and build process. © MetalTech Global. All rights reserved.

	UNLESS OTHERWISE SPECIFIED DIMENSIONS ARE IN INCHES		DRAWING NAME: INDEX	REVISION NO: A	DATED CREATED: 12/18/2015	
			DWG NO: MT_STRPH_0000	CHECKED BY: THENDERSON	APPROVED BY: ESIMONSEN	
			PROJECT NAME: INDEX			
	SCALE: NTS	SHEET NO: 1 OF 1	SIZE: A	TOLERANCES: ANGULAR ±1° LINEAR ±0.06		



NOTE:

Information and details are only a baseline for system and installation. Modification to meet project requirement is the responsibility of the designer, architect and contractor. MetalTech Global project staff are available to assist throughout the design and build process. © MetalTech Global. All rights reserved.

UNLESS OTHERWISE SPECIFIED
DIMENSIONS ARE IN INCHES

DRAWING NAME:
STRATA REVEAL PANEL (HORIZONTAL)

REVISION NO:
A

DATED CREATED:
12/18/2015

DWG NO:
MT_STRPH_1001

CHECKED BY:
THENDERSON

APPROVED BY:
ESIMONSEN

PROJECT NAME:
GENERAL DETAILS

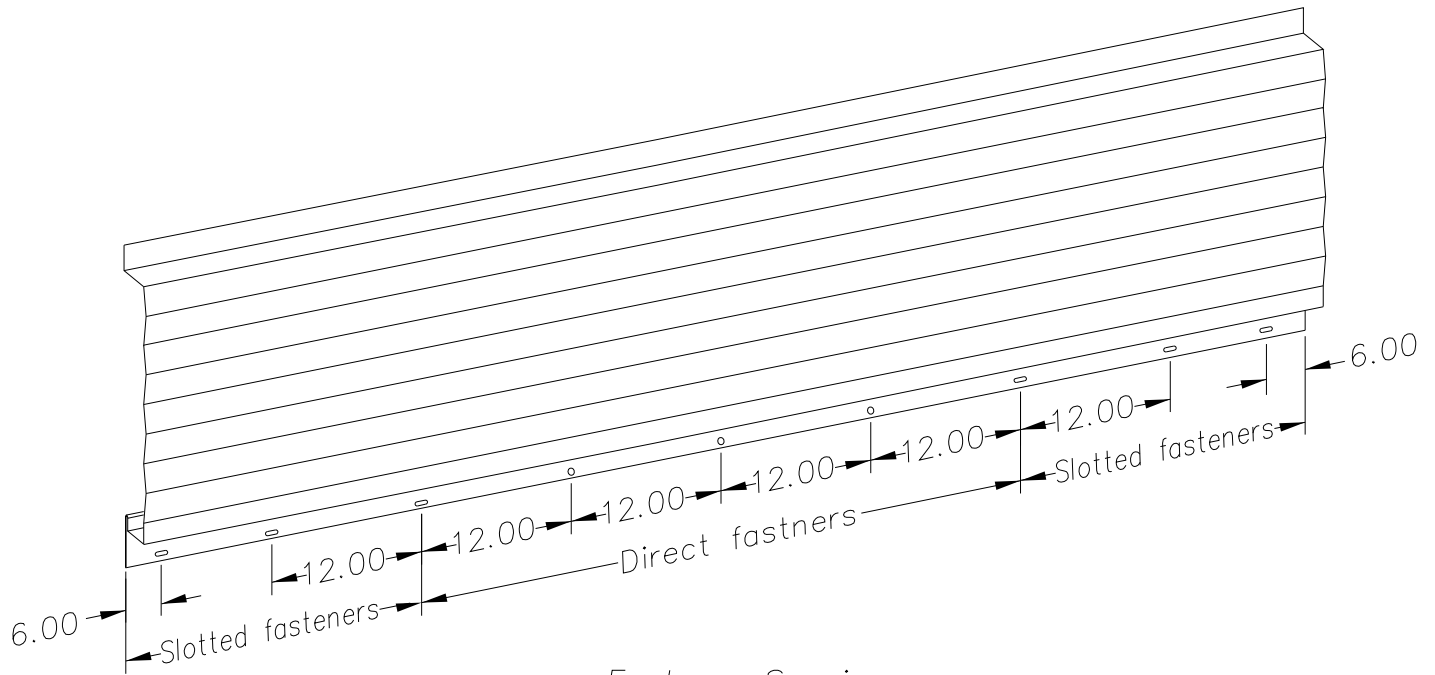
SCALE:
NTS

SHEET NO:
1 OF 9

SIZE:
A

TOLERANCES:
ANGULAR ±1° LINEAR ±0.06




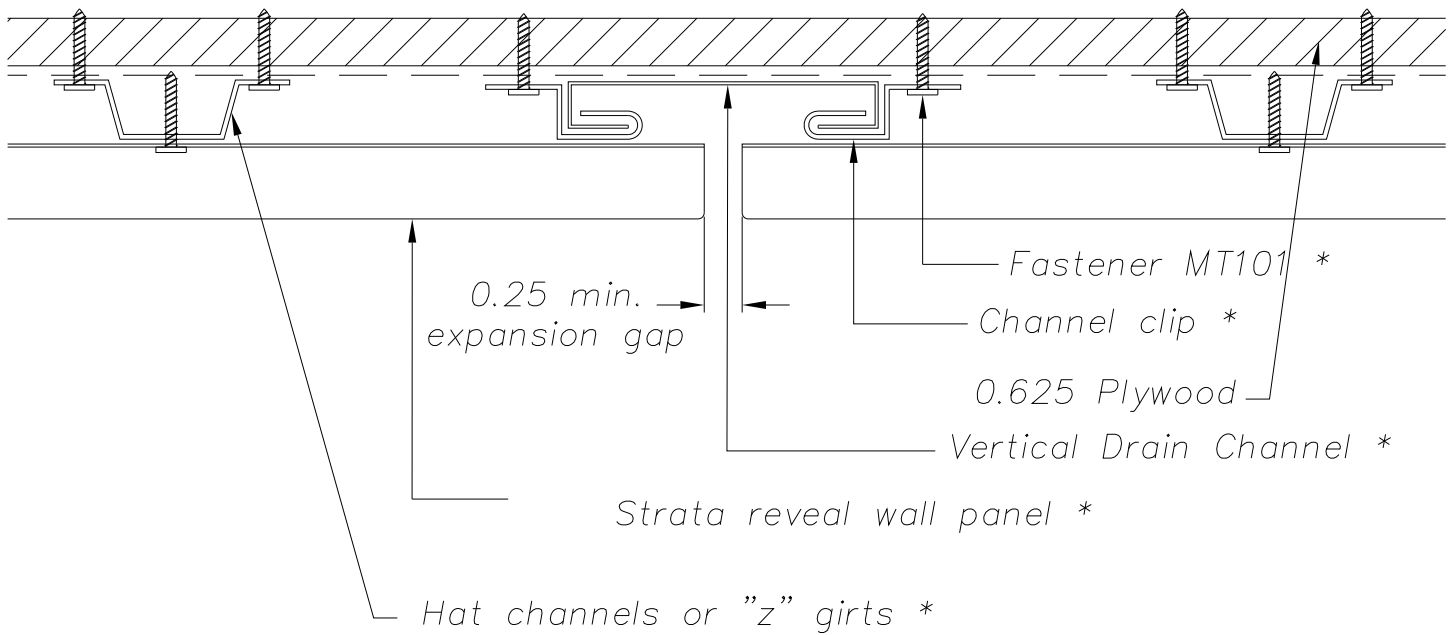


Fastener Spacing:

Stainless steel fasteners @ 12" O.C. Slotted fastener points at 12" O.C. as needed per panel. Slotted fastener points allow for expansion and contraction. Panels 8'-0" or less do not require slotted fastener holes.

NOTE:
Information and details are only a baseline for system and installation. Modification to meet project requirement is the responsibility of the designer, architect and contractor. MetalTech Global project staff are available to assist throughout the design and build process. © MetalTech Global. All rights reserved.

 <p>METALTECH Global a Forza Group Company DESIGNING STRENGTH</p>	UNLESS OTHERWISE SPECIFIED DIMENSIONS ARE IN INCHES		DRAWING NAME: STRATA REVEAL PANEL (ISOMETRIC)	REVISION NO: A	DATED CREATED: 12/18/2015	
			DWG NO: MT_STRPH_1002	CHECKED BY: THENDERSON	APPROVED BY: ESIMONSEN	
			PROJECT NAME: GENERAL DETAILS			
	SCALE: NTS	SHEET NO: 2 OF 9	SIZE: A	TOLERANCES: ANGULAR ±1° LINEAR ±0.06		



* (Supplied by
Metaltech-USA if
requested)

NOTE:

Information and details are only a baseline for system and installation. Modification to meet project requirement is the responsibility of the designer, architect and contractor. MetalTech Global project staff are available to assist throughout the design and build process. © MetalTech Global. All rights reserved.

UNLESS OTHERWISE SPECIFIED
DIMENSIONS ARE IN INCHES

DRAWING NAME:
REVEAL DETAIL – OPTION 1

REVISION NO:
A

DATED CREATED:
12/18/2015

DWG NO:
MT_STRPH_1003

CHECKED BY:
THENDERSON

APPROVED BY:
ESIMONSEN



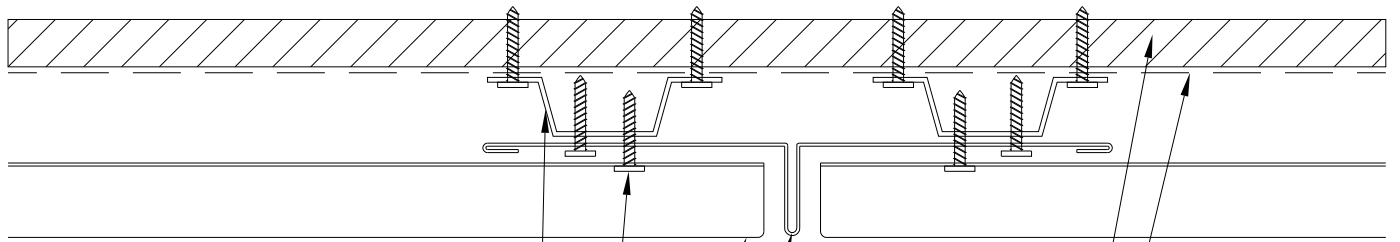
PROJECT NAME:
GENERAL DETAILS

SCALE:
NTS

SHEET NO:
3 OF 9

SIZE:
A

TOLERANCES:
ANGULAR ±1° LINEAR ±0.06



Hat channels or "z" girts *

Fastener MT101 *

Strata reveal wall panel *

Cross joint flashing *

0.625 Plywood

Underlayment *

* (Supplied by Metaltech-USA if requested)

NOTE:

Information and details are only a baseline for system and installation. Modification to meet project requirement is the responsibility of the designer, architect and contractor. MetalTech Global project staff are available to assist throughout the design and build process. © MetalTech Global. All rights reserved.

UNLESS OTHERWISE SPECIFIED
DIMENSIONS ARE IN INCHES

DRAWING NAME:
REVEAL DETAIL - OPTION 2

REVISION NO:
A

DATED CREATED:
12/18/2015

DWG NO:
MT_STRPH_1004

CHECKED BY:
THENDERSON

APPROVED BY:
ESIMONSEN

PROJECT NAME:
GENERAL DETAILS

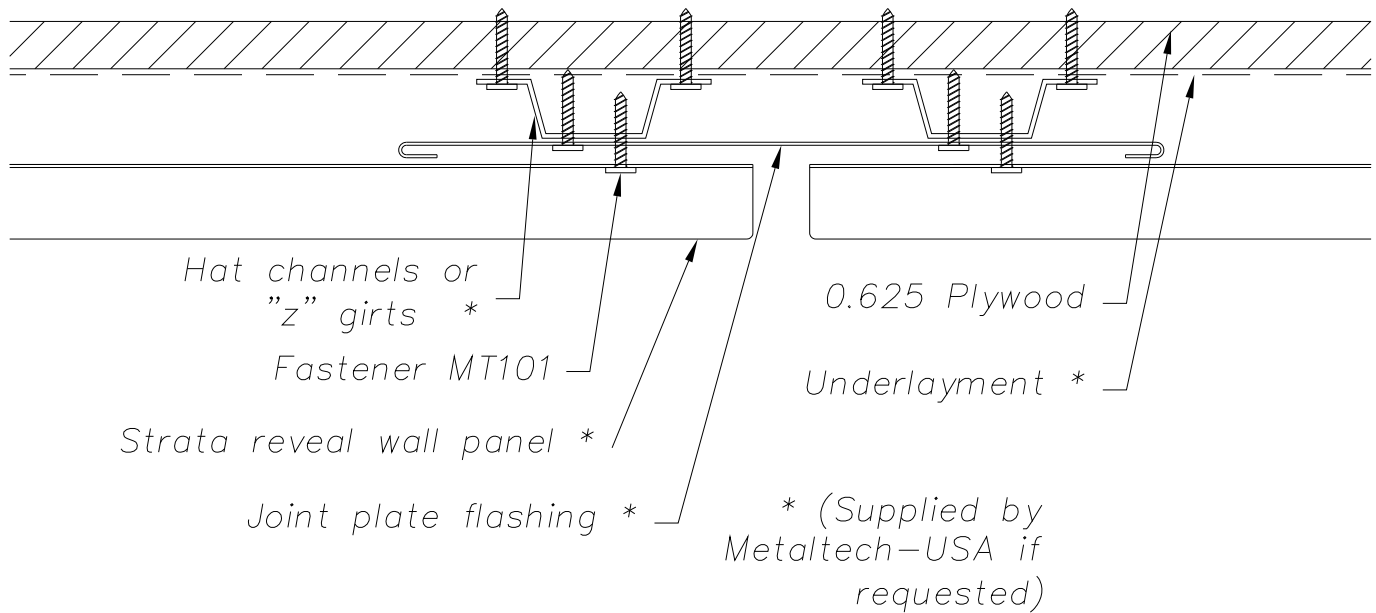
SCALE:
NTS

SHEET NO:
4 OF 9


SIZE:
A

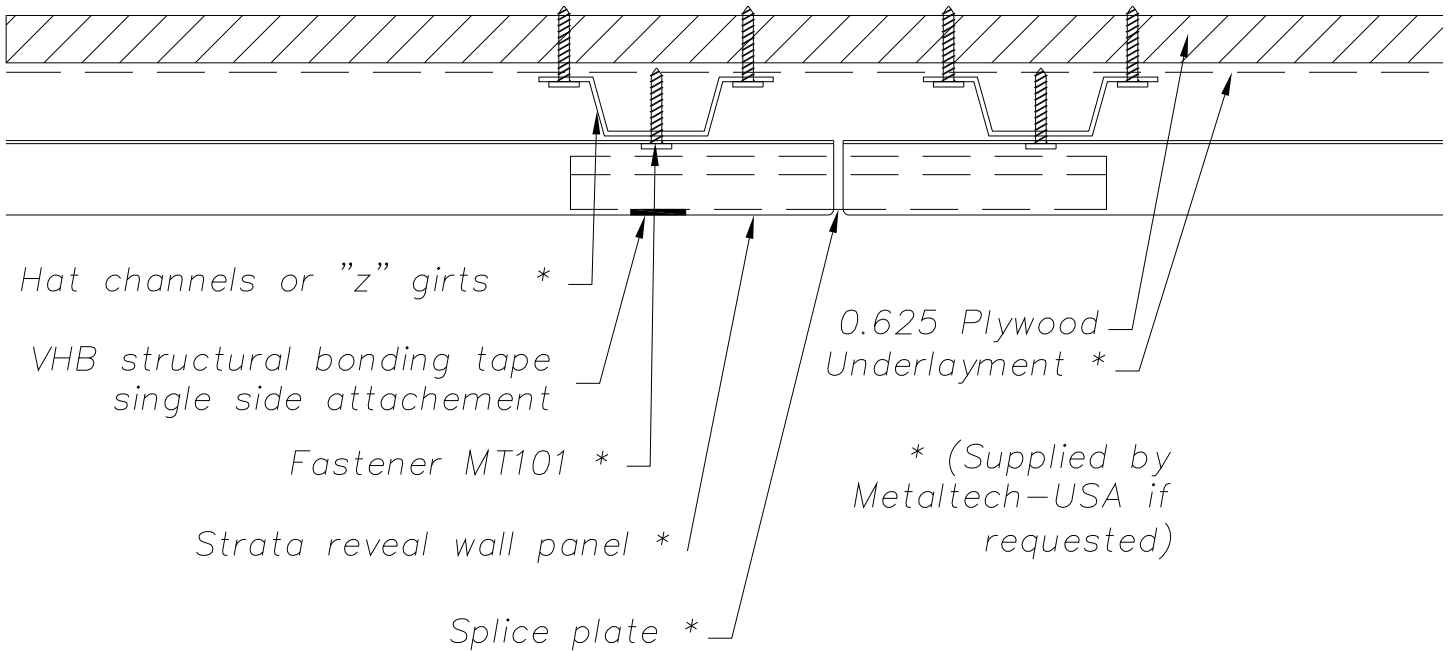
TOLERANCES:
ANGULAR ±1° LINEAR ±0.06






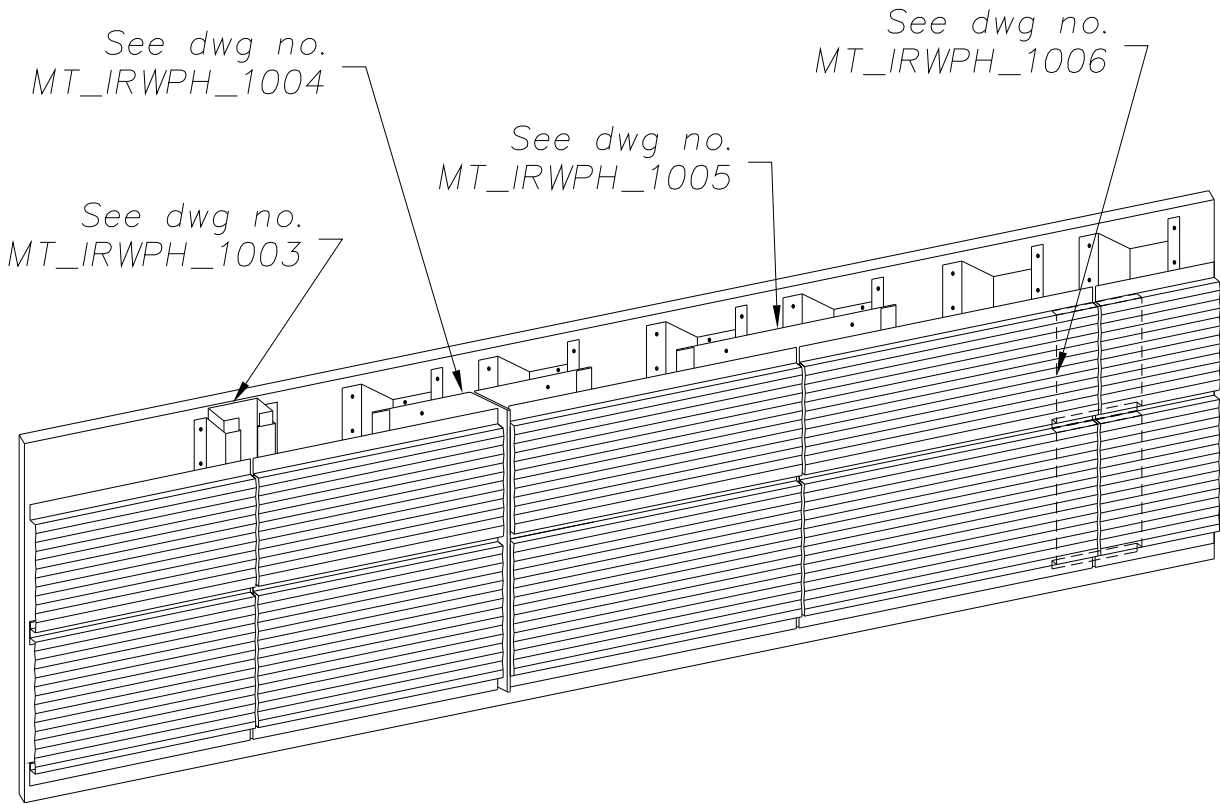
NOTE:
 Information and details are only a baseline for system and installation. Modification to meet project requirement is the responsibility of the designer, architect and contractor. MetalTech Global project staff are available to assist throughout the design and build process. © MetalTech Global. All rights reserved.

	DRAWING NAME: REVEAL DETAIL - OPTION 3		REVISION NO: A	DATED CREATED: 12/18/2015
	DWG NO: MT_STRPH_1005		CHECKED BY: THENDERSON	APPROVED BY: ESIMONSEN
	PROJECT NAME: GENERAL DETAILS			
	SCALE: NTS	SHEET NO: 5 OF 9	SIZE: A	TOLERANCES: ANGULAR ±1° LINEAR ±0.06




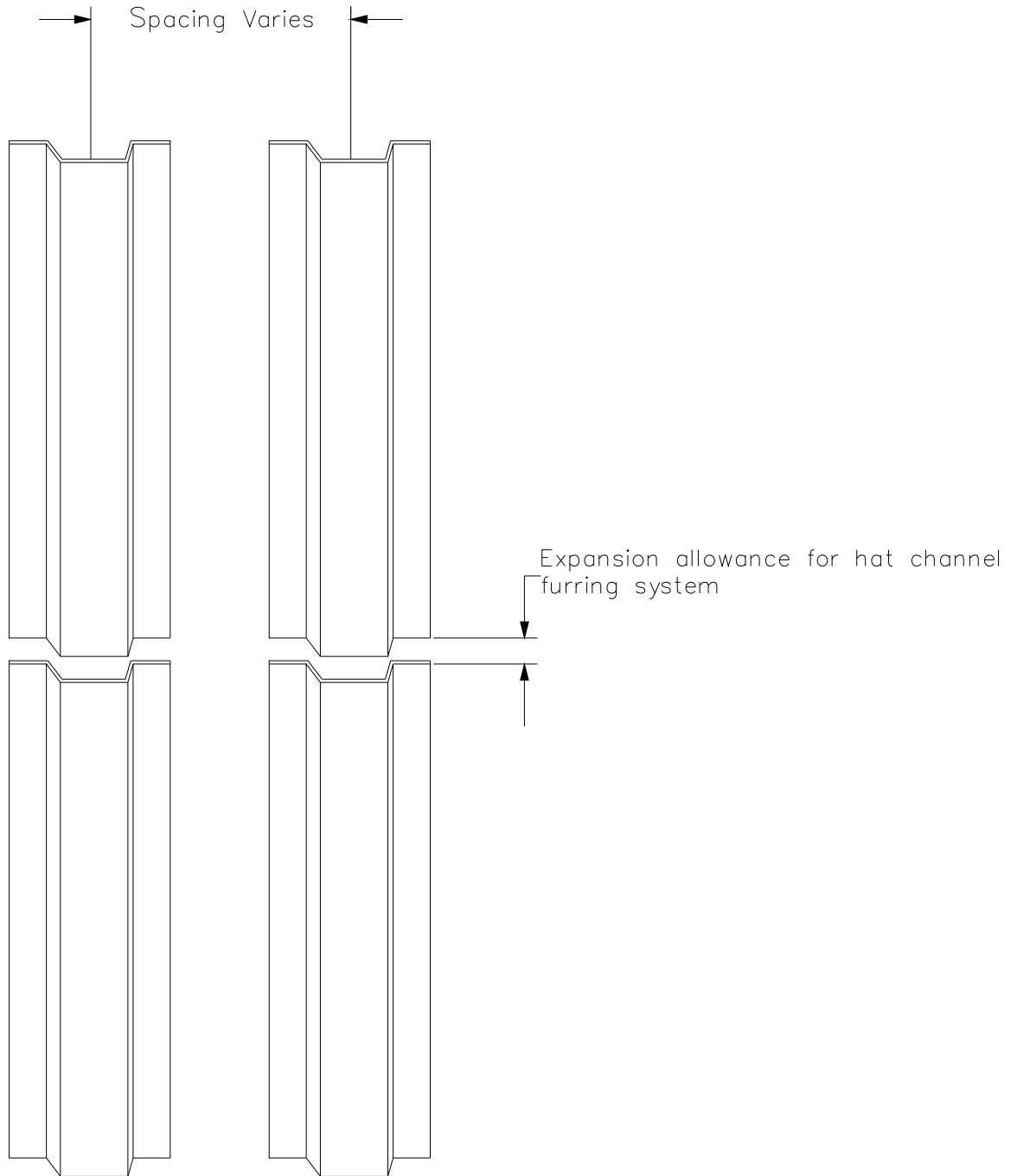
NOTE:
 Information and details are only a baseline for system and installation. Modification to meet project requirement is the responsibility of the designer, architect and contractor. MetalTech Global project staff are available to assist throughout the design and build process. © MetalTech Global. All rights reserved.

	UNLESS OTHERWISE SPECIFIED DIMENSIONS ARE IN INCHES		DRAWING NAME: REVEAL DETAIL – OPTION 4	REVISION NO: A	DATED CREATED: 12/18/2015
			DWG NO: MT_STRPH_1006	CHECKED BY: THENDERSON	APPROVED BY: ESIMONSEN
	PROJECT NAME: GENERAL DETAILS				
	SCALE: NTS	SHEET NO: 6 OF 9	SIZE: A	TOLERANCES: ANGULAR $\pm 1^\circ$ LINEAR ± 0.06	



NOTE:
 Information and details are only a baseline for system and installation. Modification to meet project requirement is the responsibility of the designer, architect and contractor. MetalTech Global project staff are available to assist throughout the design and build process. © MetalTech Global. All rights reserved.

UNLESS OTHERWISE SPECIFIED DIMENSIONS ARE IN INCHES	DRAWING NAME: REVEAL OPTIONS (ISOMETRIC)	REVISION NO: A	DATED CREATED: 12/18/2015
	DWG NO: MT_STRPH_1007	CHECKED BY: THENDERSON	APPROVED BY: ESIMONSEN
	PROJECT NAME: GENERAL DETAILS		
SCALE: NTS	SHEET NO: 7 OF 9	SIZE: A	TOLERANCES: ANGULAR ±1° LINEAR ±0.06



NOTE: Spacing based on material and hat channel lengths. Depending on continuous gross square footage of wall panel, consideration for expansion and contraction should also be given for attached panels, substrate, and single skin.

NOTE: Information and details are only a baseline for system and installation. Modification to meet project requirement is the responsibility of the designer, architect and contractor. MetalTech Global project staff are available to assist throughout the design and build process. © MetalTech Global. All rights reserved.

	UNLESS OTHERWISE SPECIFIED DIMENSIONS ARE IN INCHES		DRAWING NAME: HAT CHANNEL SPACING	REVISION NO: A	DATED CREATED: 12/18/2015
			DWG NO: MT_STRPH_1008	CHECKED BY: THENDERSON	APPROVED BY: ESIMONSEN
	PROJECT NAME: GENERAL DETAILS				
	SCALE: NTS	SHEET NO: 8 OF 9	SIZE: A	TOLERANCES: ANGULAR ±1° LINEAR ±0.06	




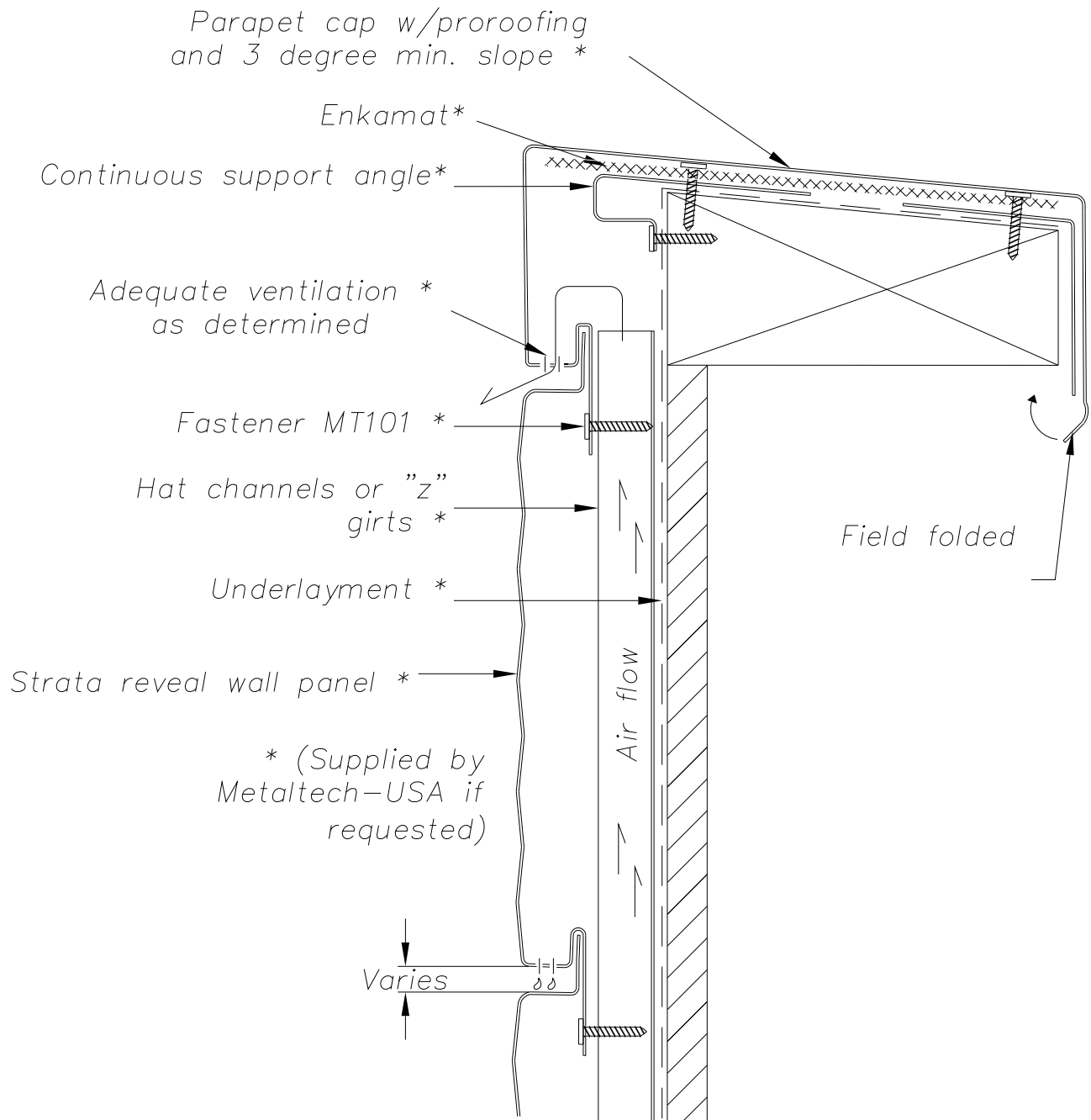
MT101
Wood Applications




MT101SX3
Sheet Metal Applications

NOTE:
Information and details are only a baseline for system and installation. Modification to meet project requirement is the responsibility of the designer, architect and contractor. MetalTech Global project staff are available to assist throughout the design and build process. © MetalTech Global. All rights reserved.

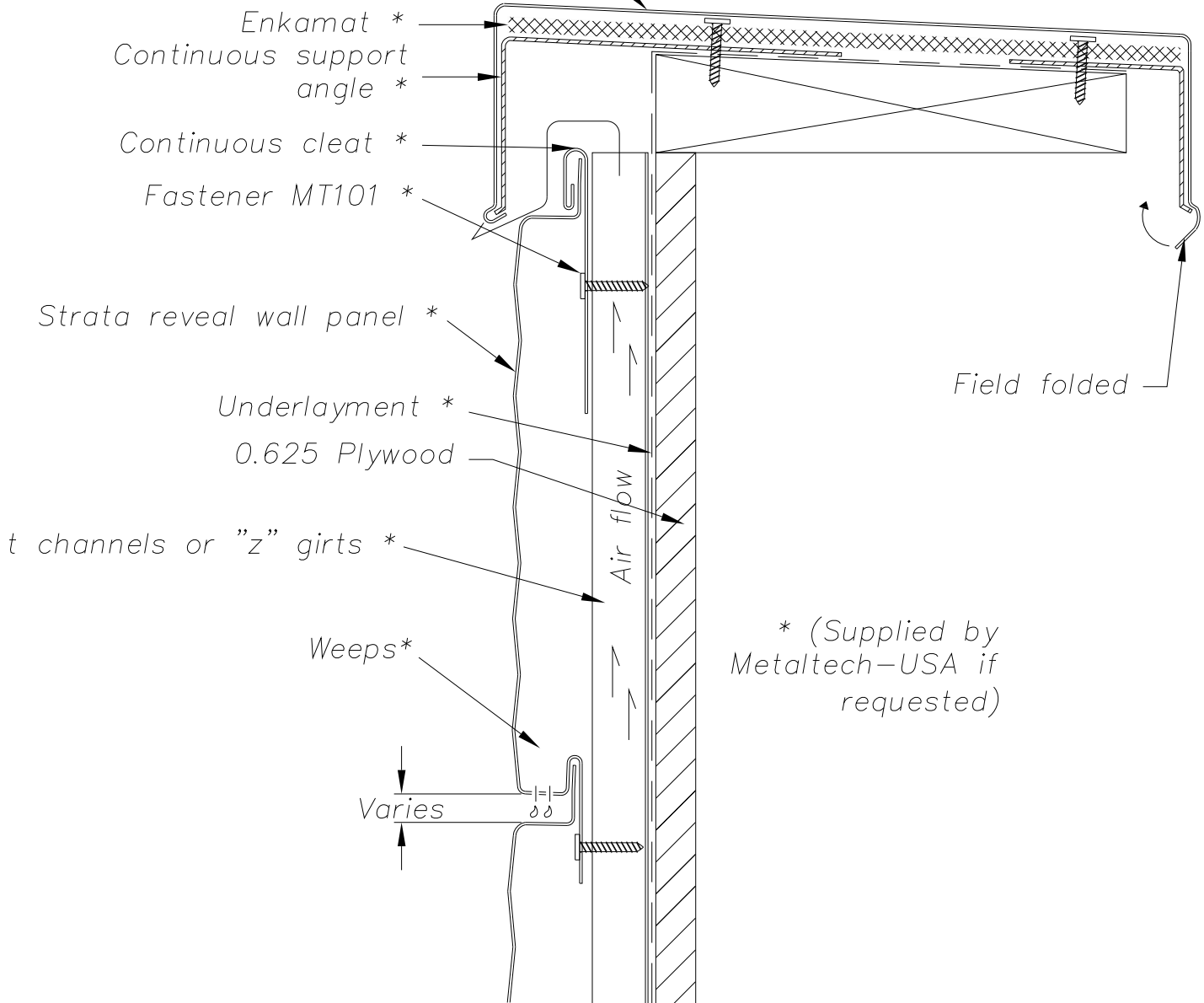
UNLESS OTHERWISE SPECIFIED DIMENSIONS ARE IN INCHES	DRAWING NAME: FASTENERS		REVISION NO: A	DATED CREATED: 12/18/2015
	DWG NO: MT_STRPH_1009		CHECKED BY: THENDERSON	APPROVED BY: ESIMONSEN
	PROJECT NAME: GENERAL DETAILS			
	SCALE: NTS	SHEET NO: 9 OF 9	SIZE: A	TOLERANCES: ANGULAR ±1° LINEAR ±0.06



NOTE:
 Information and details are only a baseline for system and installation. Modification to meet project requirement is the responsibility of the designer, architect and contractor. MetalTech Global project staff are available to assist throughout the design and build process. © MetalTech Global. All rights reserved.


UNLESS OTHERWISE SPECIFIED DIMENSIONS ARE IN INCHES	DRAWING NAME: PARAPET DETAIL – OPTION 1	REVISION NO: A	DATED CREATED: 12/18/2015
	DWG NO: MT_STRPH_1101	CHECKED BY: THENDERSON	APPROVED BY: ESIMONSEN
	PROJECT NAME: TOP OF WALL DETAILS		
SCALE: NTS	SHEET NO: 1 OF 5	SIZE: A	TOLERANCES: ANGULAR ±1° LINEAR ±0.06

Parapet cap w/proroofting
and 3 degree min. slope *



* (Supplied by
Metaltech-USA if
requested)

NOTE:
Information and details are only a baseline for system and installation. Modification to meet project requirement is the responsibility of the designer, architect and contractor. MetalTech Global project staff are available to assist throughout the design and build process. © MetalTech Global. All rights reserved.

 <p>METALTECH Global a Forza Group Company DESIGNING STRENGTH</p>	<p>DRAWING NAME: PARAPET DETAIL – OPTION 2</p>		<p>REVISION NO: A</p>	<p>DATED CREATED: 12/18/2015</p>
	<p>DWG NO: MT_STRPH_1102</p>		<p>CHECKED BY: THENDERSON</p>	<p>APPROVED BY: ESIMONSEN</p>
	<p>PROJECT NAME: TOP OF WALL DETAILS</p>			
	<p>SCALE: NTS</p>	<p>SHEET NO: 2 OF 5</p>	<p>SIZE: A</p>	<p>TOLERANCES: ANGULAR ±1° LINEAR ±0.06</p>

Parapet cap w/proroofting and 3 degree min. slope *

Enkamat *

Continuous support angle *

Perforated bug screen to allow for ventilation *

Fastener MT101 *

Strata reveal wall panel *

Hat channels or "z" girts *

Underlayment *

0.625 Plywood

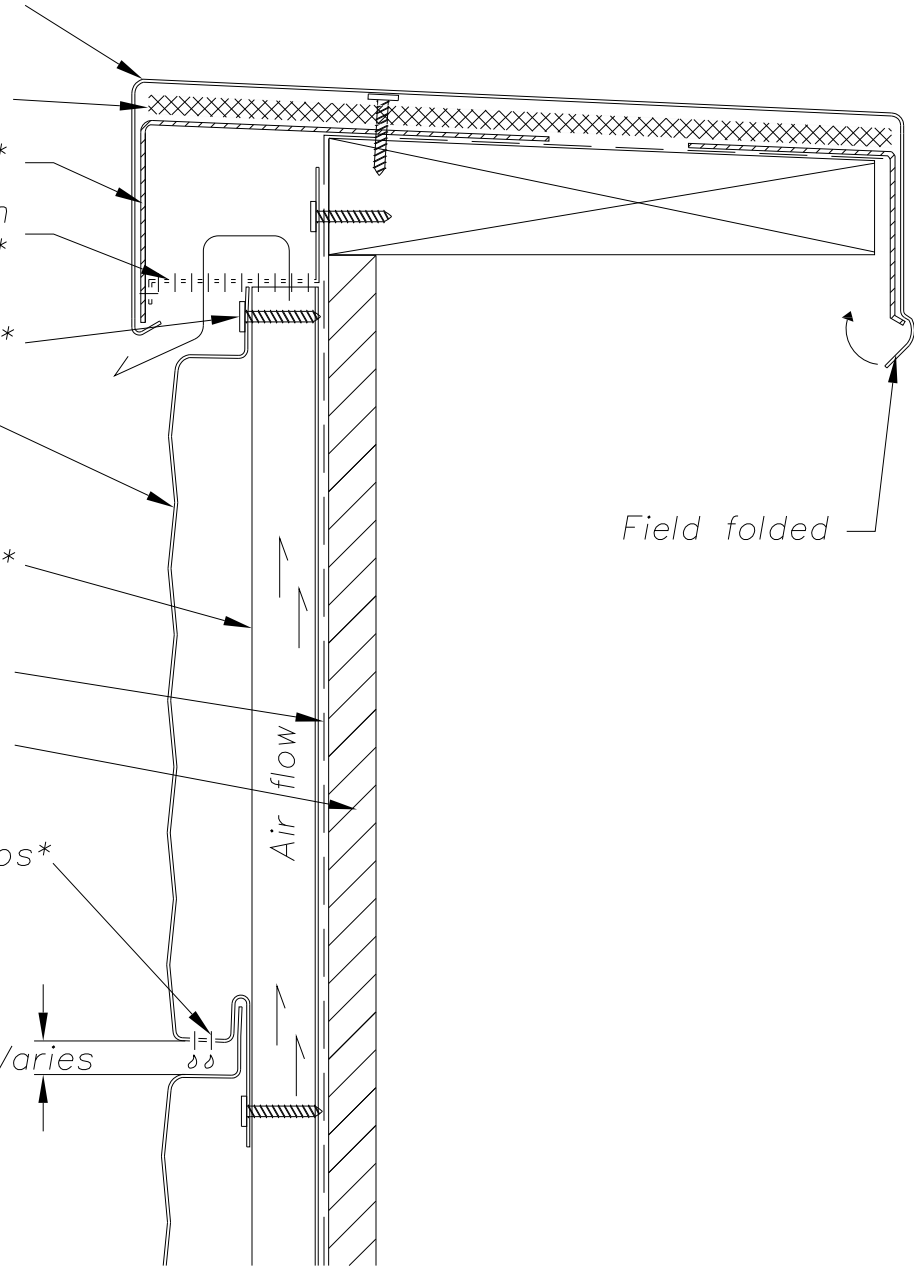
Weeps*

* (Supplied by Metaltech-USA if requested)

Varies

Air flow

Field folded



NOTE:
Information and details are only a baseline for system and installation. Modification to meet project requirement is the responsibility of the designer, architect and contractor. MetalTech Global project staff are available to assist throughout the design and build process. © MetalTech Global. All rights reserved.

UNLESS OTHERWISE SPECIFIED DIMENSIONS ARE IN INCHES

DRAWING NAME:
PARAPET DETAIL – OPTION 3

REVISION NO:
A

DATED CREATED:
12/18/2015

DWG NO:
MT_STRPH_1103

CHECKED BY:
THENDERSON

APPROVED BY:
ESIMONSEN

PROJECT NAME:
TOP OF WALL DETAILS

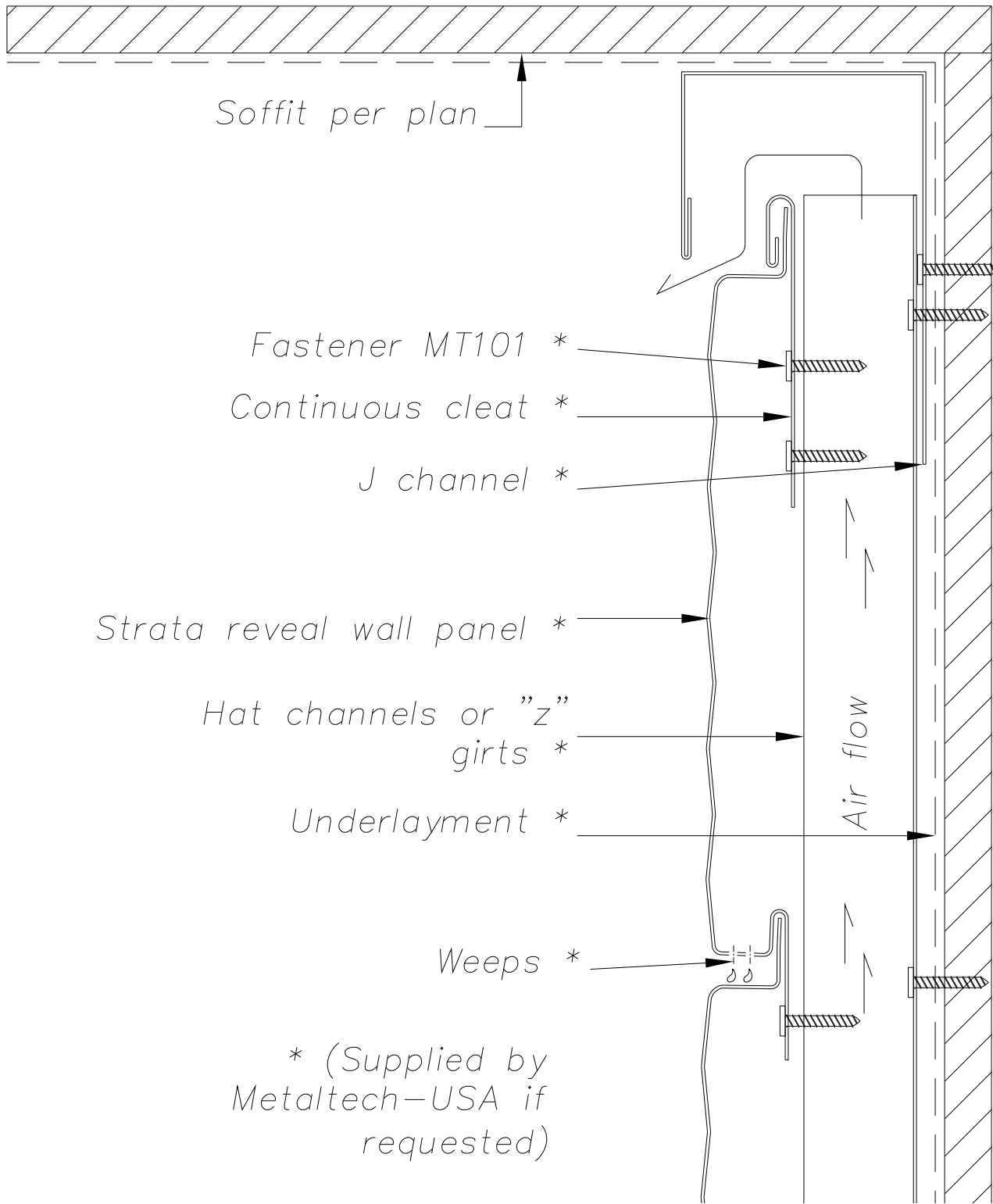
SCALE:
NTS

SHEET NO:
3 OF 5

SIZE:
A

TOLERANCES:
ANGULAR ±1° LINEAR ±0.06

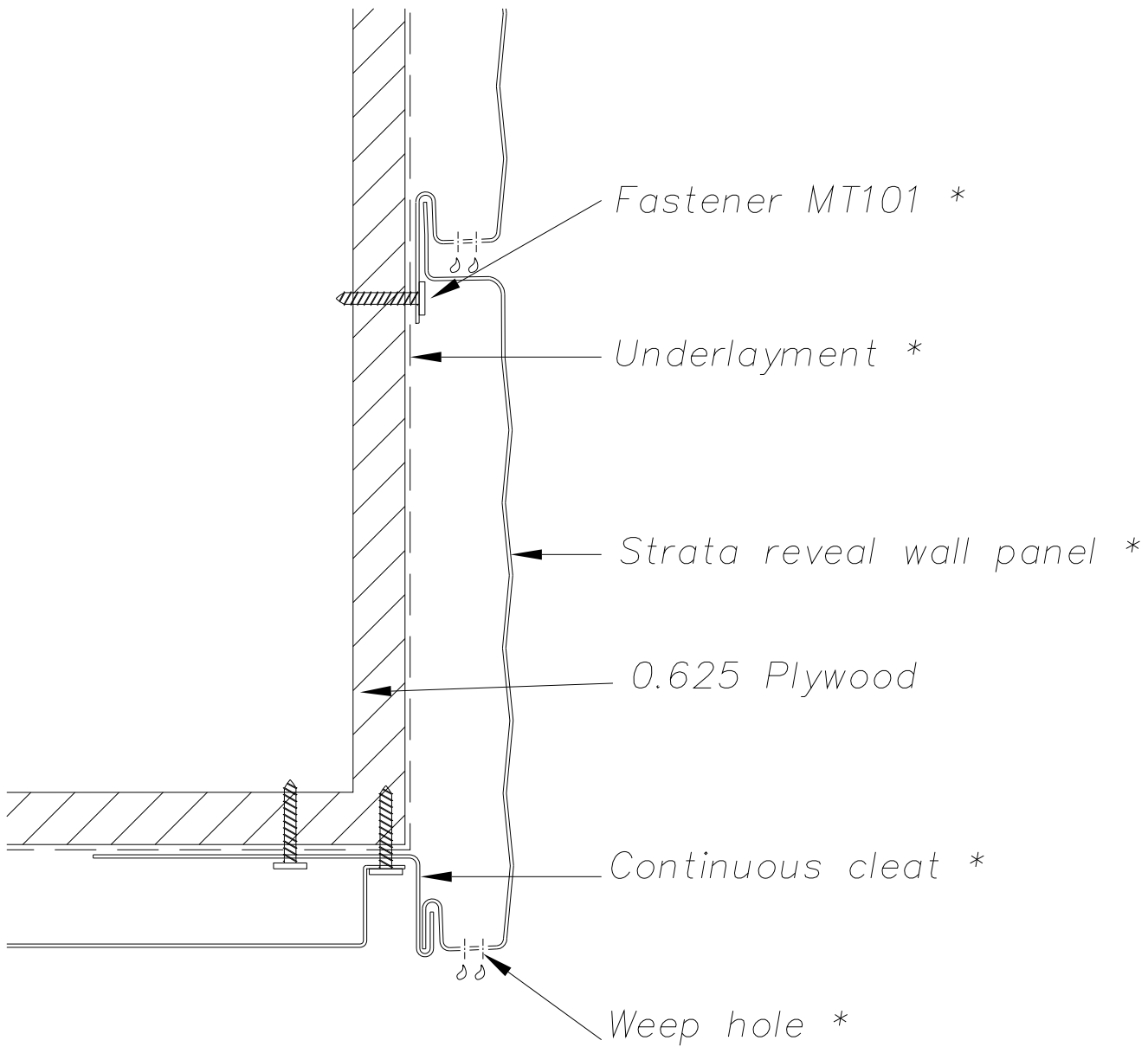




NOTE:
 Information and details are only a baseline for system and installation. Modification to meet project requirement is the responsibility of the designer, architect and contractor. MetalTech Global project staff are available to assist throughout the design and build process. © MetalTech Global. All rights reserved.

UNLESS OTHERWISE SPECIFIED DIMENSIONS ARE IN INCHES	DRAWING NAME: WALL TO SOFFIT TRANSITION		REVISION NO: A	DATED CREATED: 12/18/2015
	DWG NO: MT_STRPH_1104		CHECKED BY: THENDERSON	APPROVED BY: ESIMONSEN
PROJECT NAME: TOP OF WALL DETAILS				
SCALE: NTS	SHEET NO: 4 OF 5	SIZE: A	TOLERANCES: ANGULAR $\pm 1'$ LINEAR ± 0.06	



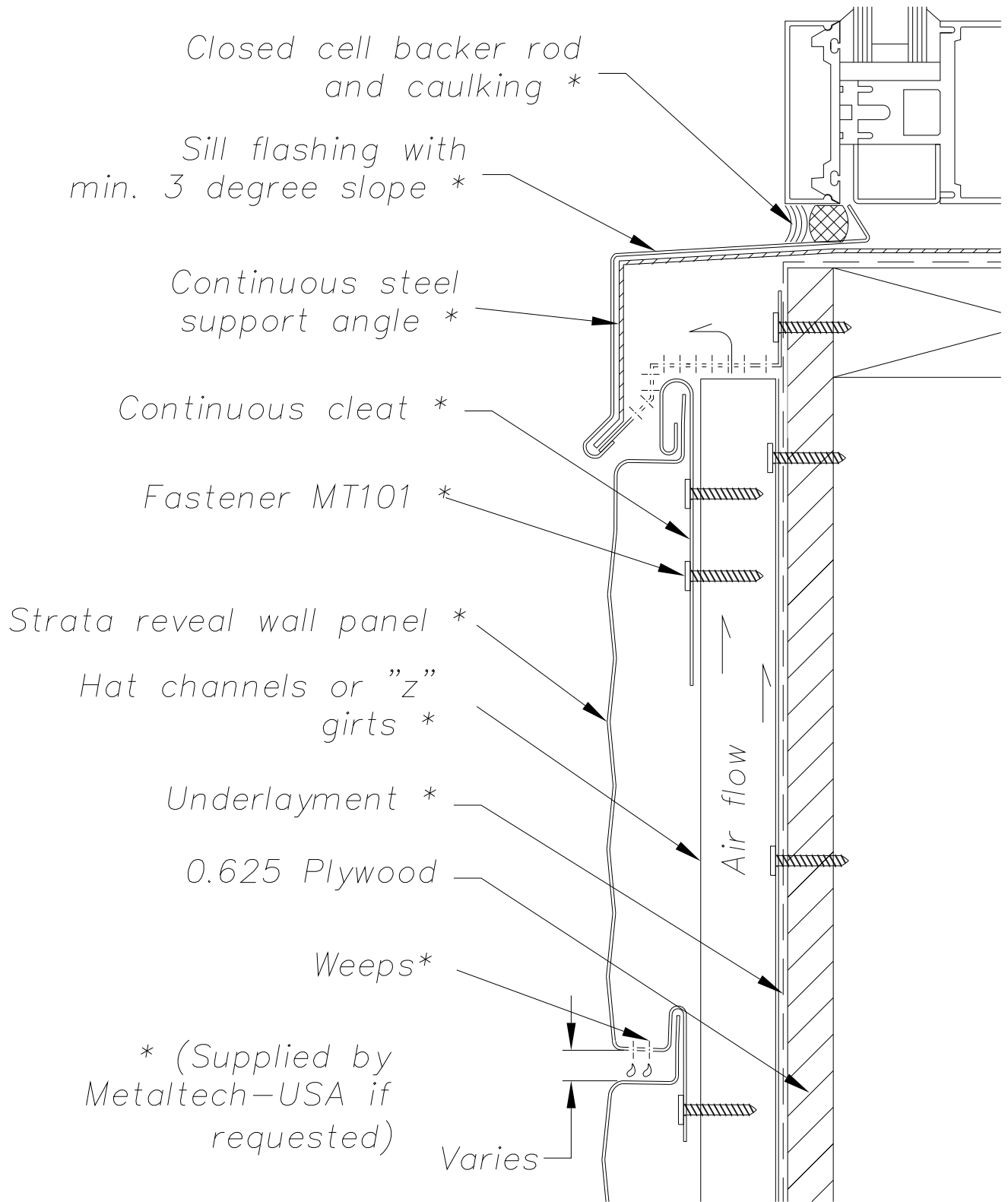


* (Supplied by
Metaltech-USA if
requested)


NOTE:

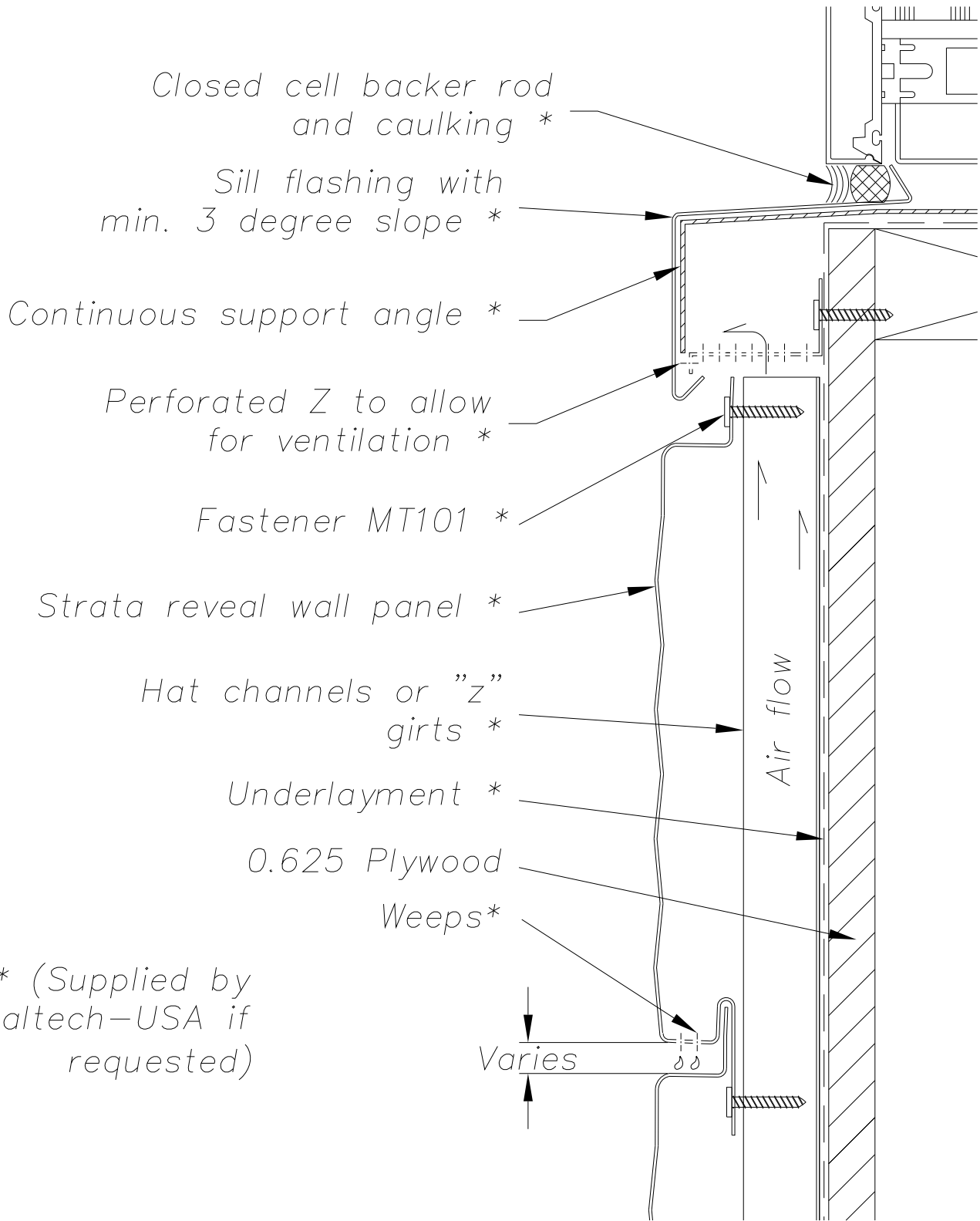
Information and details are only a baseline for system and installation. Modification to meet project requirement is the responsibility of the designer, architect and contractor. MetalTech Global project staff are available to assist throughout the design and build process. © MetalTech Global. All rights reserved.

	UNLESS OTHERWISE SPECIFIED DIMENSIONS ARE IN INCHES		DRAWING NAME: SOFFIT TO FASCIA TRANSITION	REVISION NO: A	DATED CREATED: 12/18/2015
			DWG NO: MT_STRPH_1105	CHECKED BY: THENDERSON	APPROVED BY: ESIMONSEN
	PROJECT NAME: TOP OF WALL DETAILS				
	SCALE: NTS	SHEET NO: 5 OF 5	SIZE: A	TOLERANCES: ANGULAR ±1° LINEAR ±0.06	



NOTE:
 Information and details are only a baseline for system and installation. Modification to meet project requirement is the responsibility of the designer, architect and contractor. MetalTech Global project staff are available to assist throughout the design and build process. © MetalTech Global. All rights reserved.

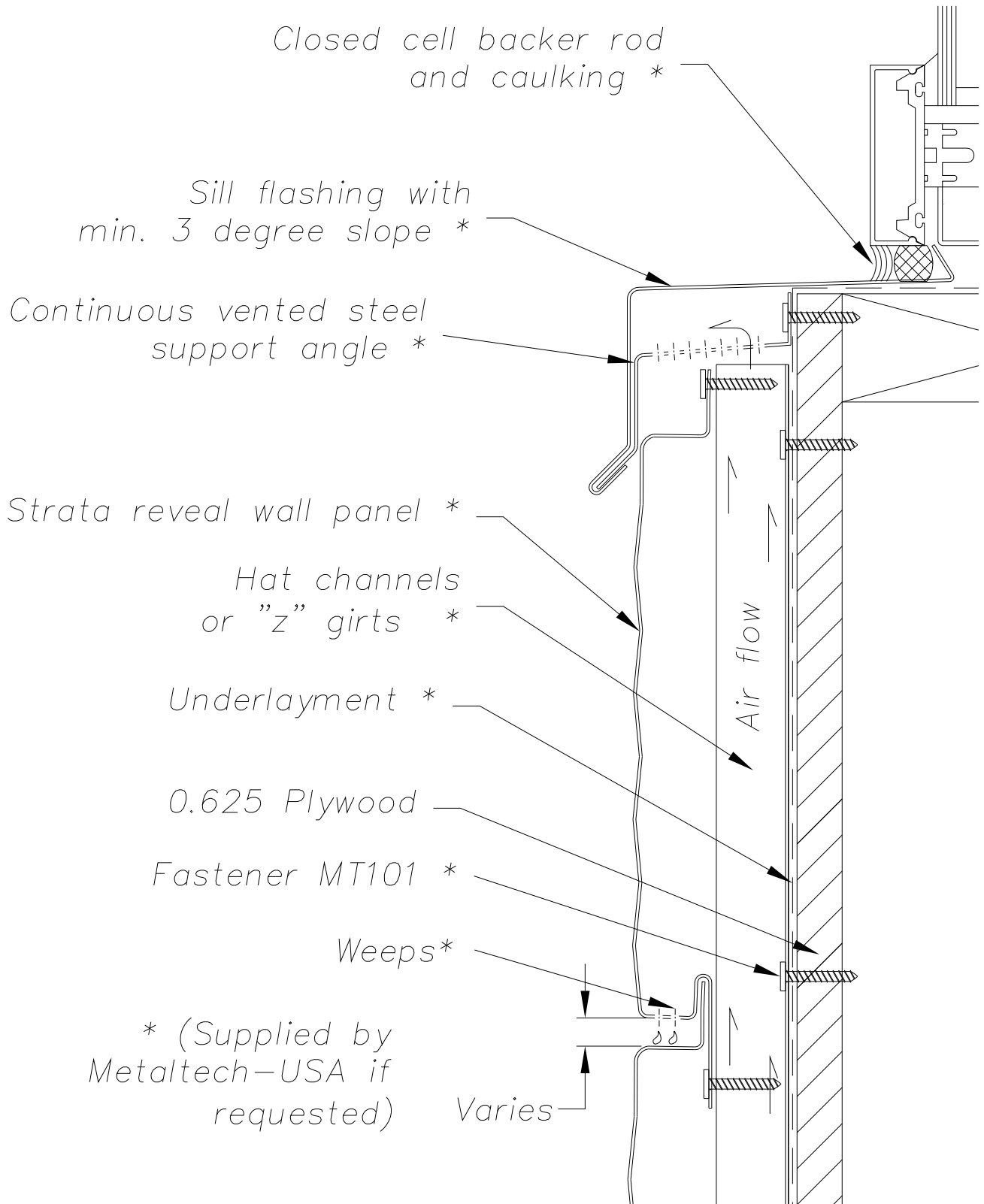
	DRAWING NAME: SILL DETAIL - OPTION 1		REVISION NO: A	DATED CREATED: 12/18/2015
	DWG NO: MT_STRPH_1201		CHECKED BY: THENDERSON	APPROVED BY: ESIMONSEN
	PROJECT NAME: WINDOW DETAILS			
	SCALE: NTS	SHEET NO: 1 OF 10	SIZE: A	TOLERANCES: ANGULAR ±1° LINEAR ±0.06



* (Supplied by Metaltech-USA if requested)

NOTE:
 Information and details are only a baseline for system and installation. Modification to meet project requirement is the responsibility of the designer, architect and contractor. MetalTech Global project staff are available to assist throughout the design and build process. © MetalTech Global. All rights reserved.

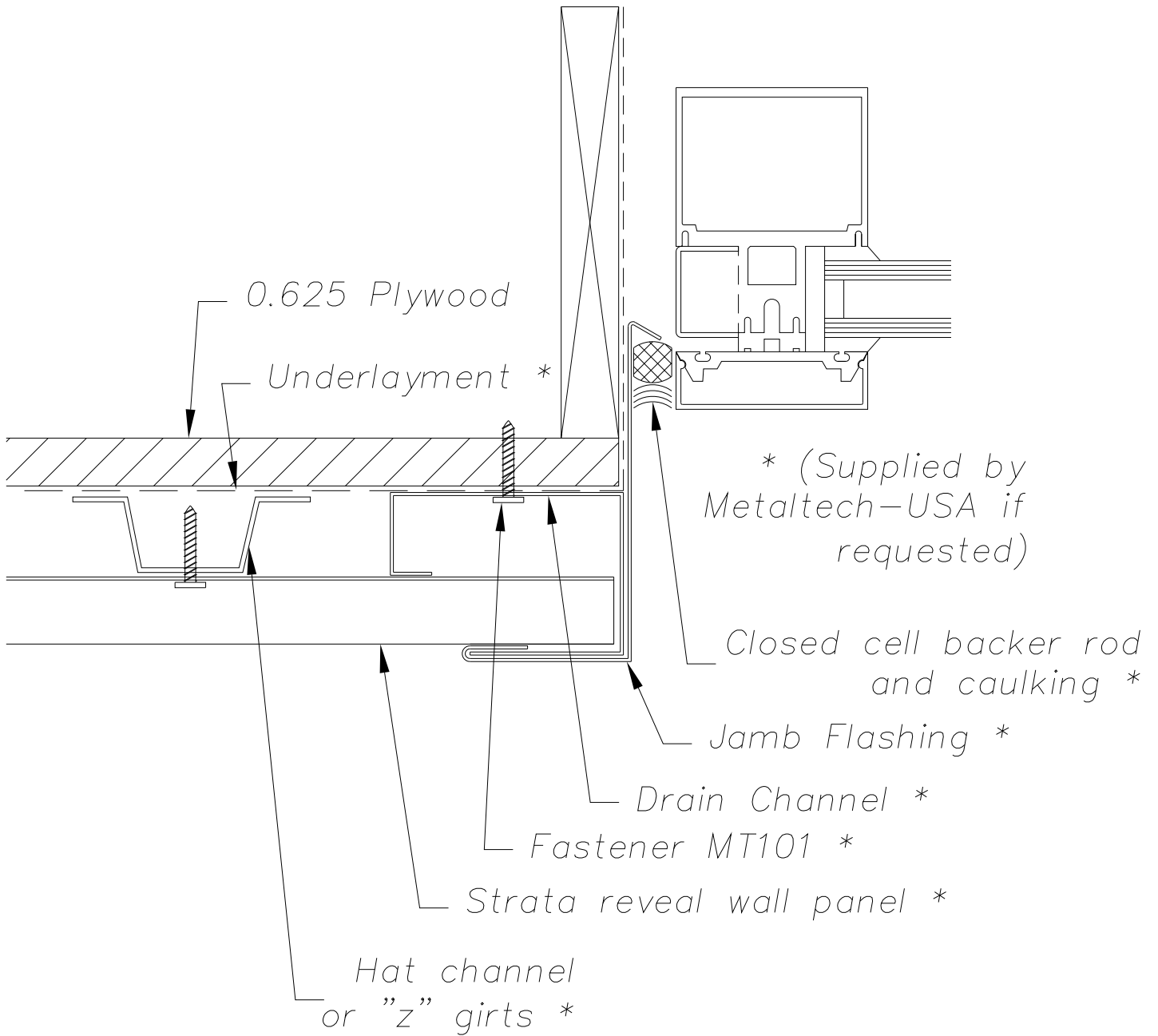
	UNLESS OTHERWISE SPECIFIED DIMENSIONS ARE IN INCHES		DRAWING NAME: SILL DETAIL - OPTION 2	REVISION NO: A	DATED CREATED: 12/18/2015
			DWG NO: MT_STRPH_1202	CHECKED BY: THENDERSON	APPROVED BY: ESIMONSEN
	PROJECT NAME: WINDOW DETAILS				
	SCALE: NTS	SHEET NO: 2 OF 10	SIZE: A	TOLERANCES: ANGULAR ±1° LINEAR ±0.06	



NOTE:

Information and details are only a baseline for system and installation. Modification to meet project requirement is the responsibility of the designer, architect and contractor. MetalTech Global project staff are available to assist throughout the design and build process. © MetalTech Global. All rights reserved.

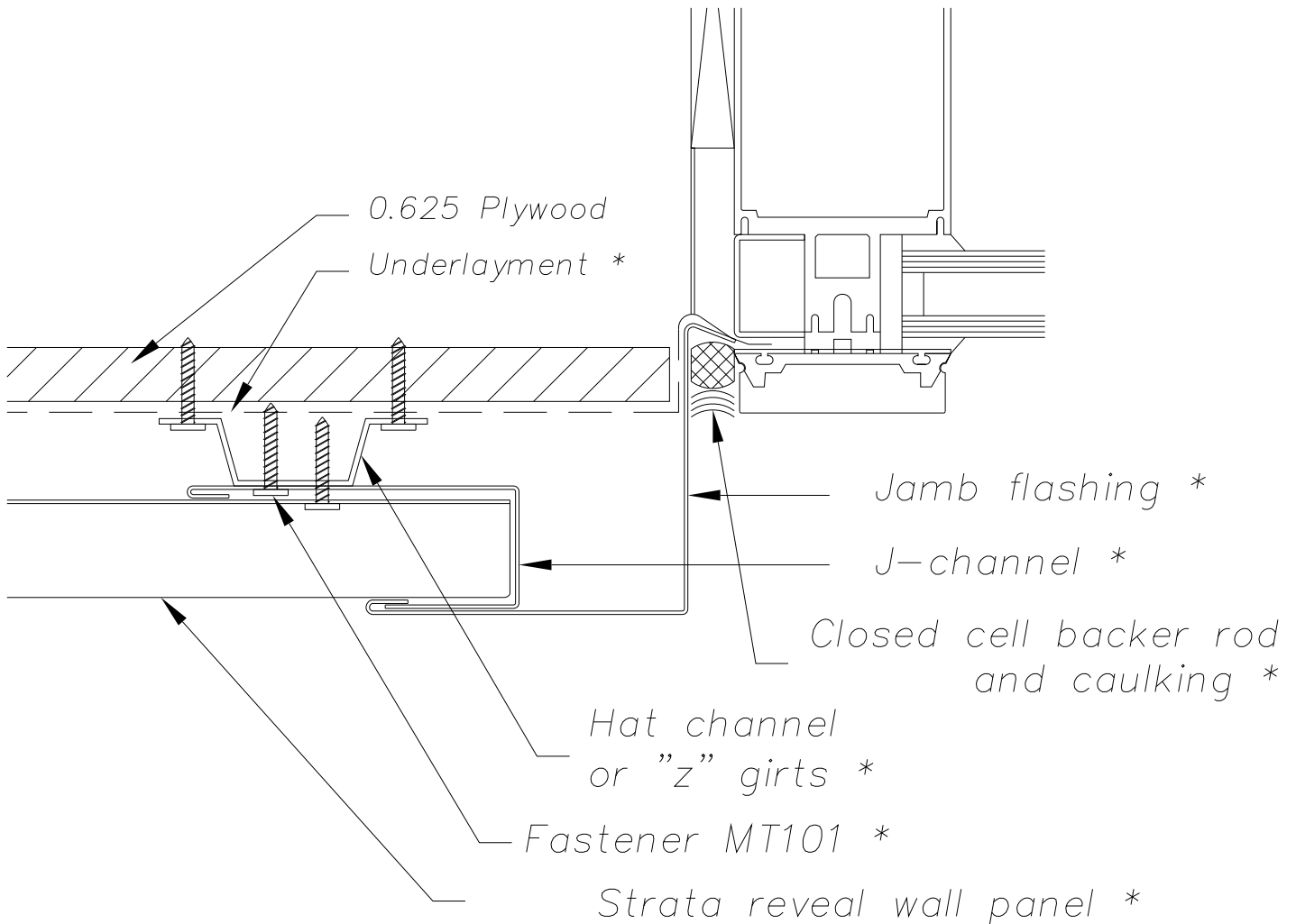
	UNLESS OTHERWISE SPECIFIED DIMENSIONS ARE IN INCHES		DRAWING NAME: SILL DETAIL - OPTION 3	REVISION NO: A	DATED CREATED: 12/18/2015
			DWG NO: MT_STRPH_1203	CHECKED BY: THENDERSON	APPROVED BY: ESIMONSEN
	PROJECT NAME: WINDOW DETAILS				
	SCALE: NTS	SHEET NO: 3 OF 10	SIZE: A	TOLERANCES: ANGULAR ±1° LINEAR ±0.06	



NOTE:
 Information and details are only a baseline for system and installation. Modification to meet project requirement is the responsibility of the designer, architect and contractor. MetalTech Global project staff are available to assist throughout the design and build process. © MetalTech Global. All rights reserved.


UNLESS OTHERWISE SPECIFIED DIMENSIONS ARE IN INCHES	DRAWING NAME: JAMB DETAIL - OPTION 1		REVISION NO: A	DATED CREATED: 12/18/2015
	DWG NO: MT_STRPH_1204		CHECKED BY: THENDERSON	APPROVED BY: ESIMONSEN
PROJECT NAME: WINDOW DETAILS				
SCALE: NTS		SHEET NO: 4 OF 10	SIZE: A	TOLERANCES: ANGULAR ±1° LINEAR ±0.06

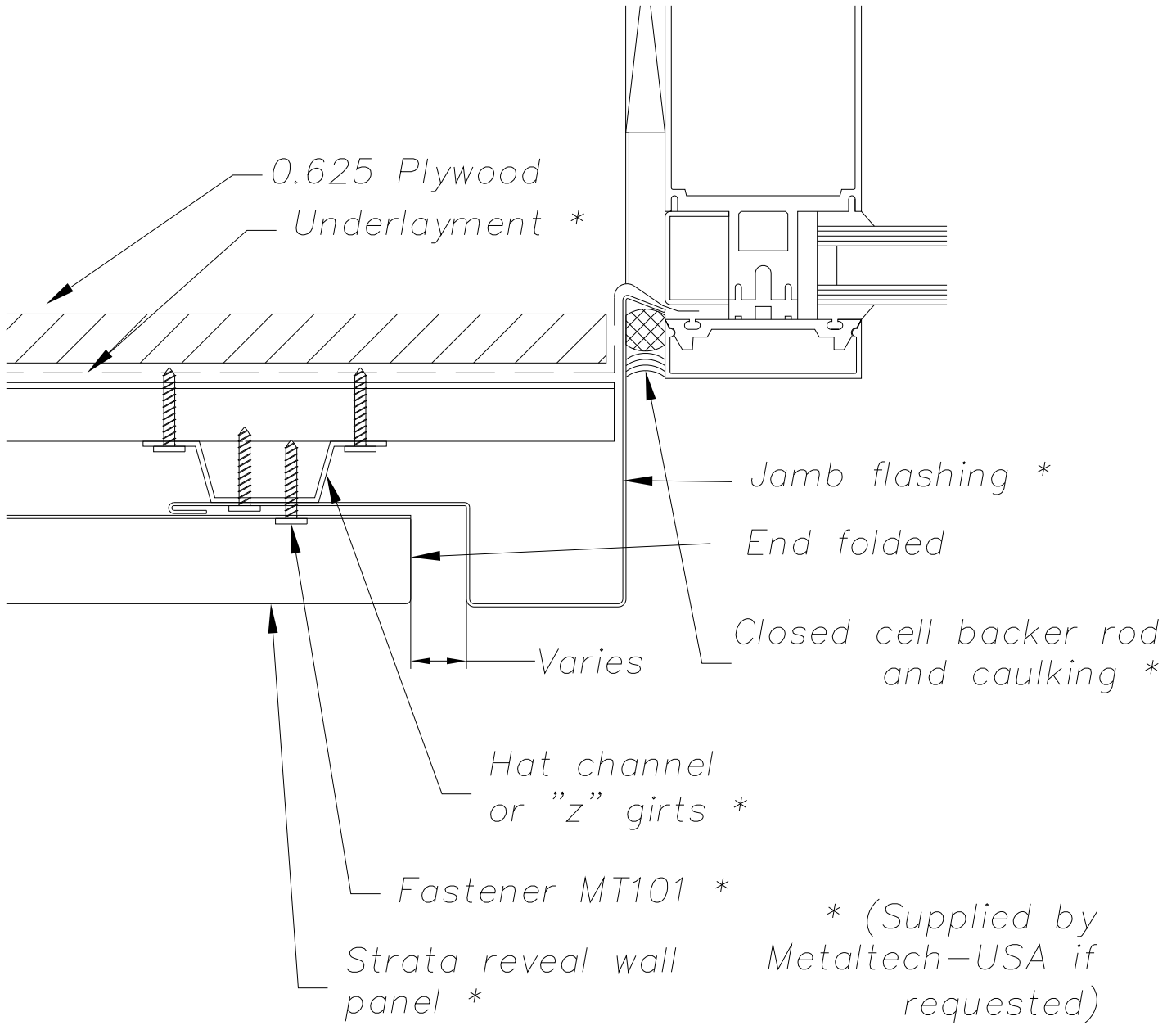





* (Supplied by Metaltech-USA if requested)

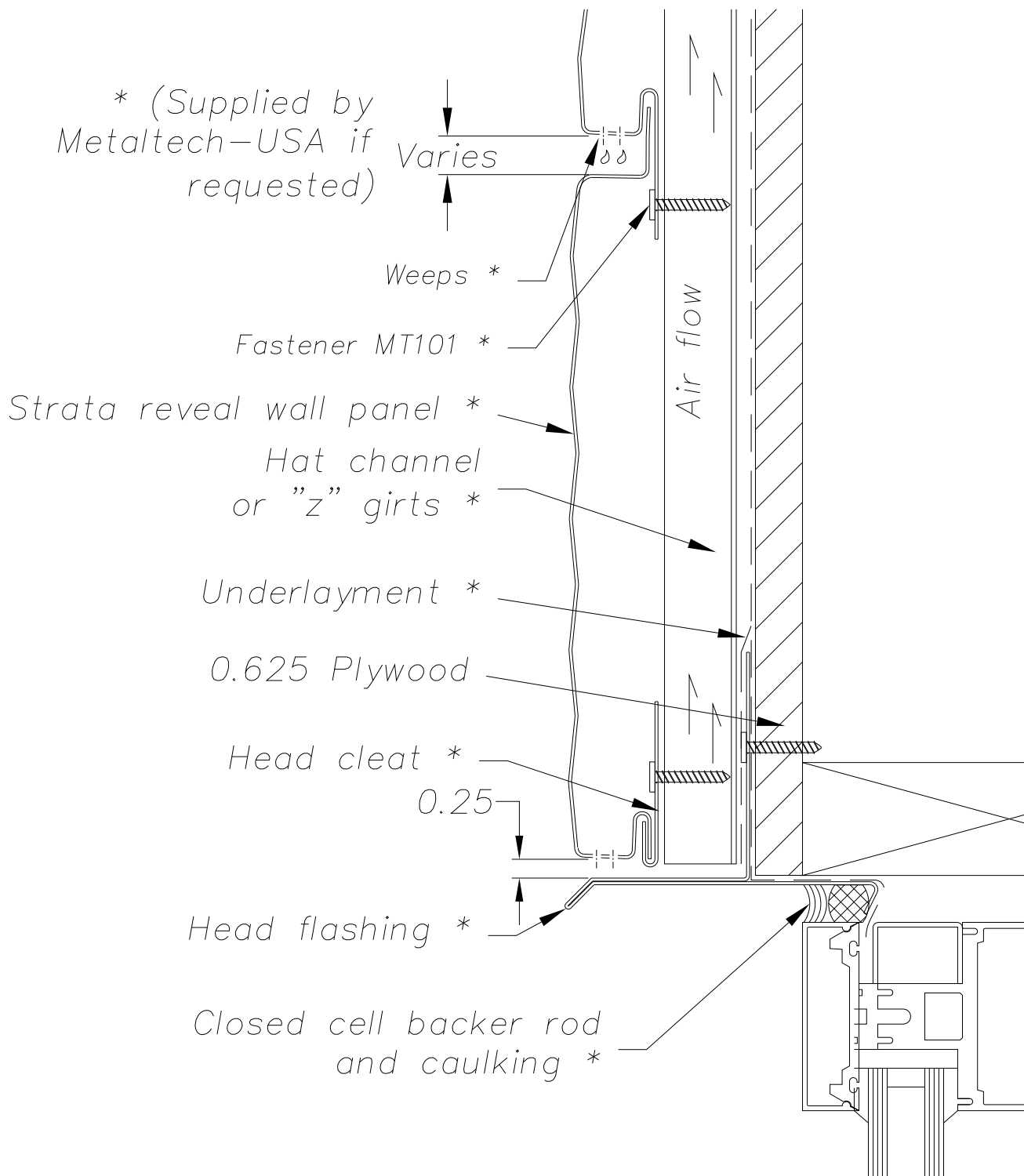
NOTE:
Information and details are only a baseline for system and installation. Modification to meet project requirement is the responsibility of the designer, architect and contractor. MetalTech Global project staff are available to assist throughout the design and build process. © MetalTech Global. All rights reserved.

	DRAWING NAME: JAMB DETAIL - OPTION 2		REVISION NO: A	DATED CREATED: 12/18/2015
	DWG NO: MT_STRPH_1205		CHECKED BY: THENDERSON	APPROVED BY: ESIMONSEN
PROJECT NAME: WINDOW DETAILS				
SCALE: NTS	SHEET NO: 5 OF 10	SIZE: A	TOLERANCES: ANGULAR ±1° LINEAR ±0.06	



NOTE:
 Information and details are only a baseline for system and installation. Modification to meet project requirement is the responsibility of the designer, architect and contractor. MetalTech Global project staff are available to assist throughout the design and build process. © MetalTech Global. All rights reserved.

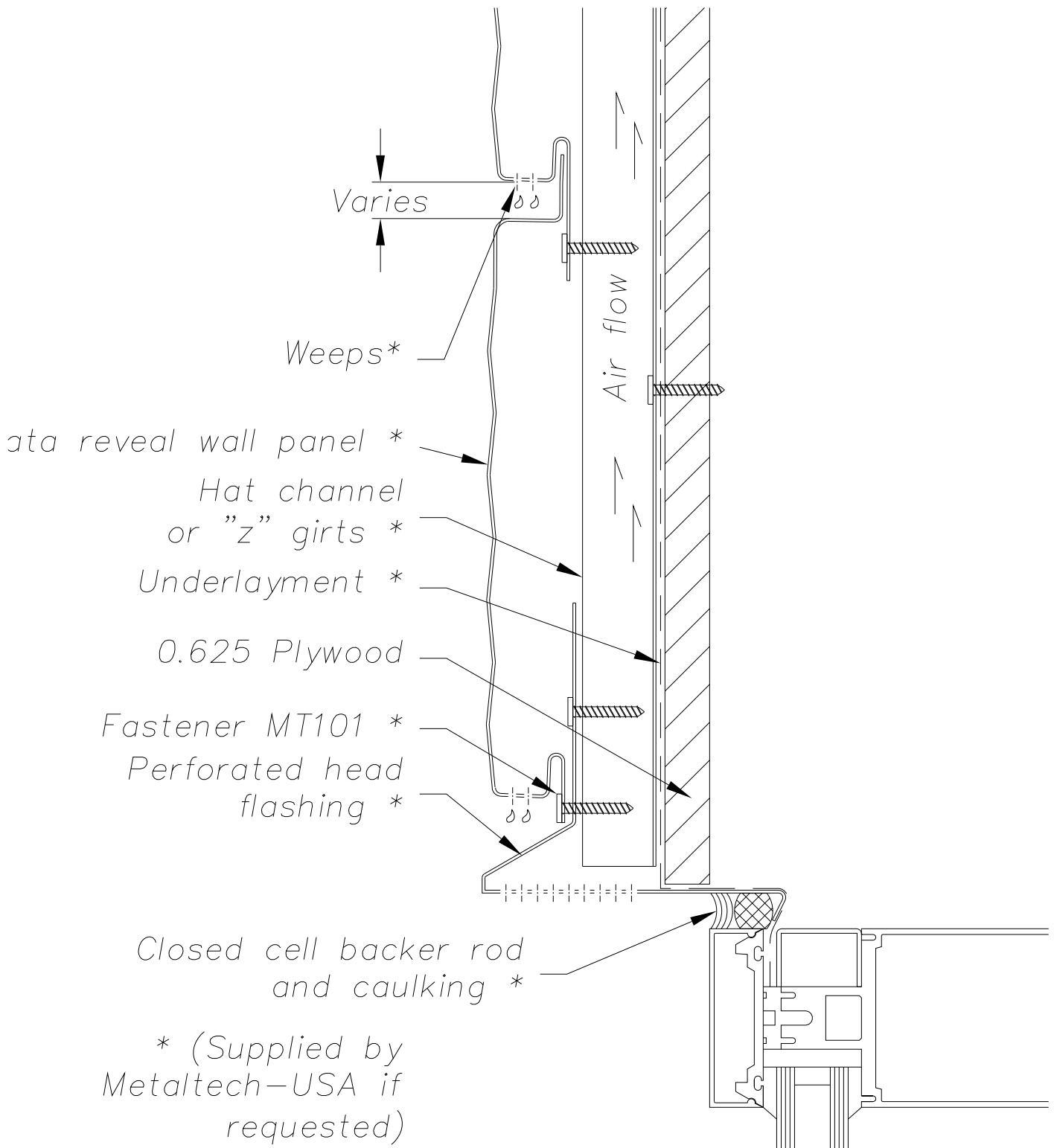
 <p>METALTECH Global <small>a Forza Group Company</small> DESIGNING STRENGTH</p>	DRAWING NAME: JAMB DETAIL - OPTION 3		REVISION NO: A	DATED CREATED: 12/18/2015
	DWG NO: MT_STRPH_1206		CHECKED BY: THENDERSON	APPROVED BY: ESIMONSEN
	PROJECT NAME: WINDOW DETAILS			
	SCALE: NTS	SHEET NO: 6 OF 10	SIZE: A	TOLERANCES: ANGULAR ±1° LINEAR ±0.06



NOTE:
 Information and details are only a baseline for system and installation. Modification to meet project requirement is the responsibility of the designer, architect and contractor. MetalTech Global project staff are available to assist throughout the design and build process. © MetalTech Global. All rights reserved.


UNLESS OTHERWISE SPECIFIED DIMENSIONS ARE IN INCHES	DRAWING NAME: HEAD DETAIL – OPTION 1		REVISION NO: A	DATED CREATED: 12/18/2015
	DWG NO: MT_STRPH_1207		CHECKED BY: THENDERSON	APPROVED BY: ESIMONSEN
PROJECT NAME: WINDOW DETAILS				
SCALE: NTS		SHEET NO: 7 OF 10	SIZE: A	TOLERANCES: ANGULAR ±1° LINEAR ±0.06

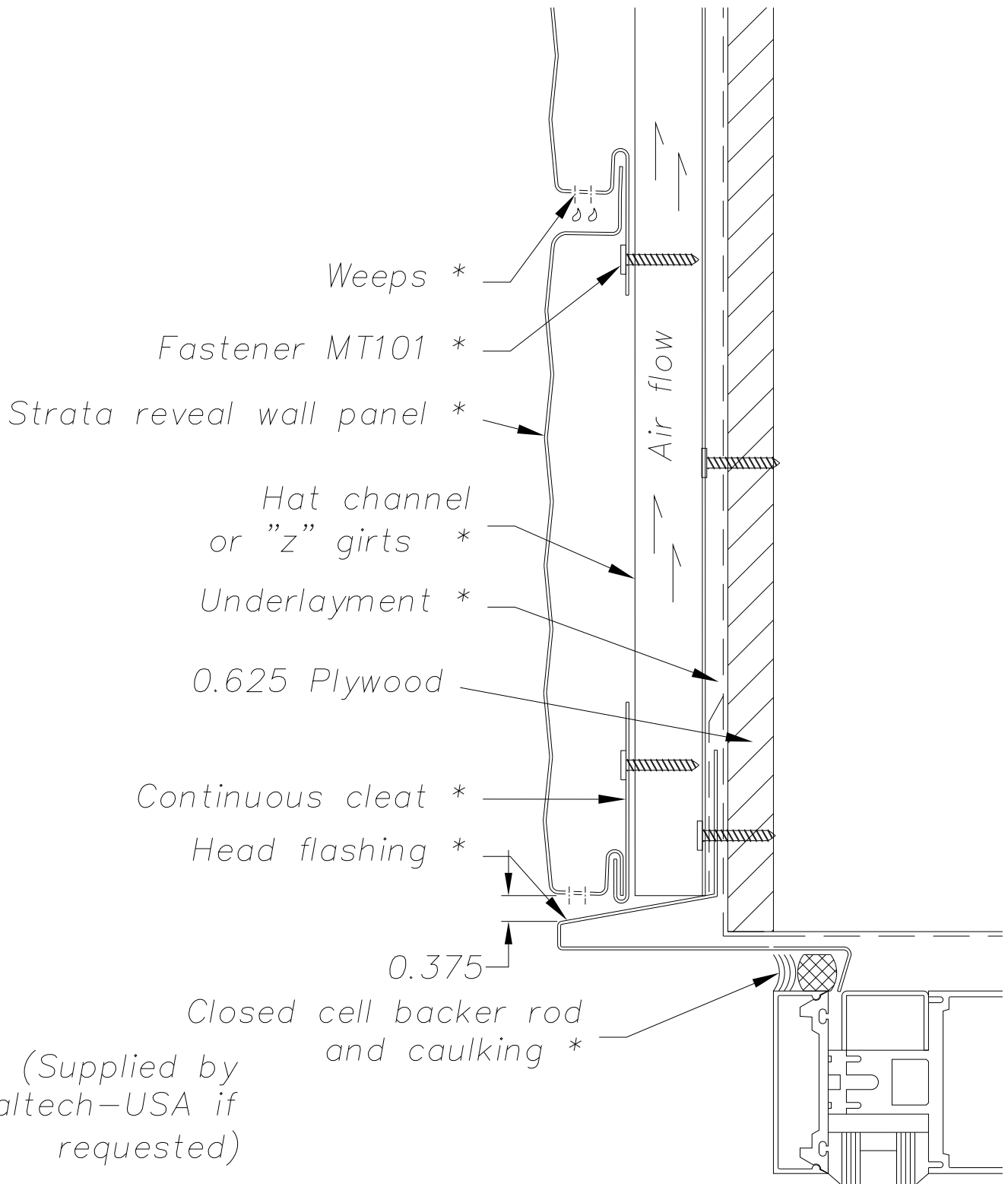




NOTE:


Information and details are only a baseline for system and installation. Modification to meet project requirement is the responsibility of the designer, architect and contractor. MetalTech Global project staff are available to assist throughout the design and build process. © MetalTech Global. All rights reserved.

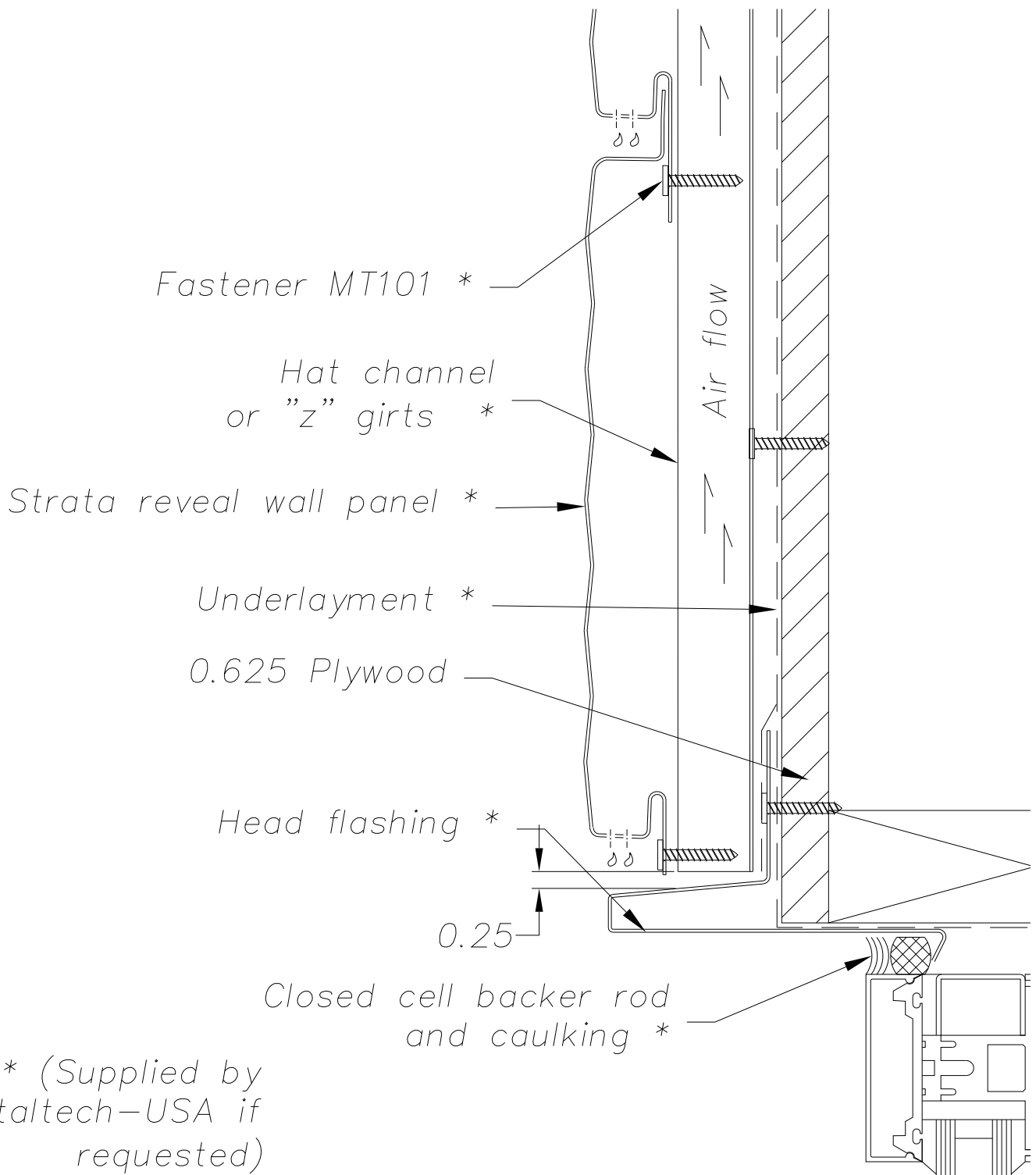
	UNLESS OTHERWISE SPECIFIED DIMENSIONS ARE IN INCHES		DRAWING NAME: HEAD DETAIL - OPTION 2	REVISION NO: A	DATED CREATED: 12/18/2015	
			DWG NO: MT_STRPH_1208	CHECKED BY: THENDERSON	APPROVED BY: ESIMONSEN	
			PROJECT NAME: WINDOW DETAILS			
	SCALE: NTS	SHEET NO: 8 OF 10	SIZE: A	TOLERANCES: ANGULAR ±1° LINEAR ±0.06		



NOTE:

Information and details are only a baseline for system and installation. Modification to meet project requirement is the responsibility of the designer, architect and contractor. MetalTech Global project staff are available to assist throughout the design and build process. © MetalTech Global. All rights reserved.

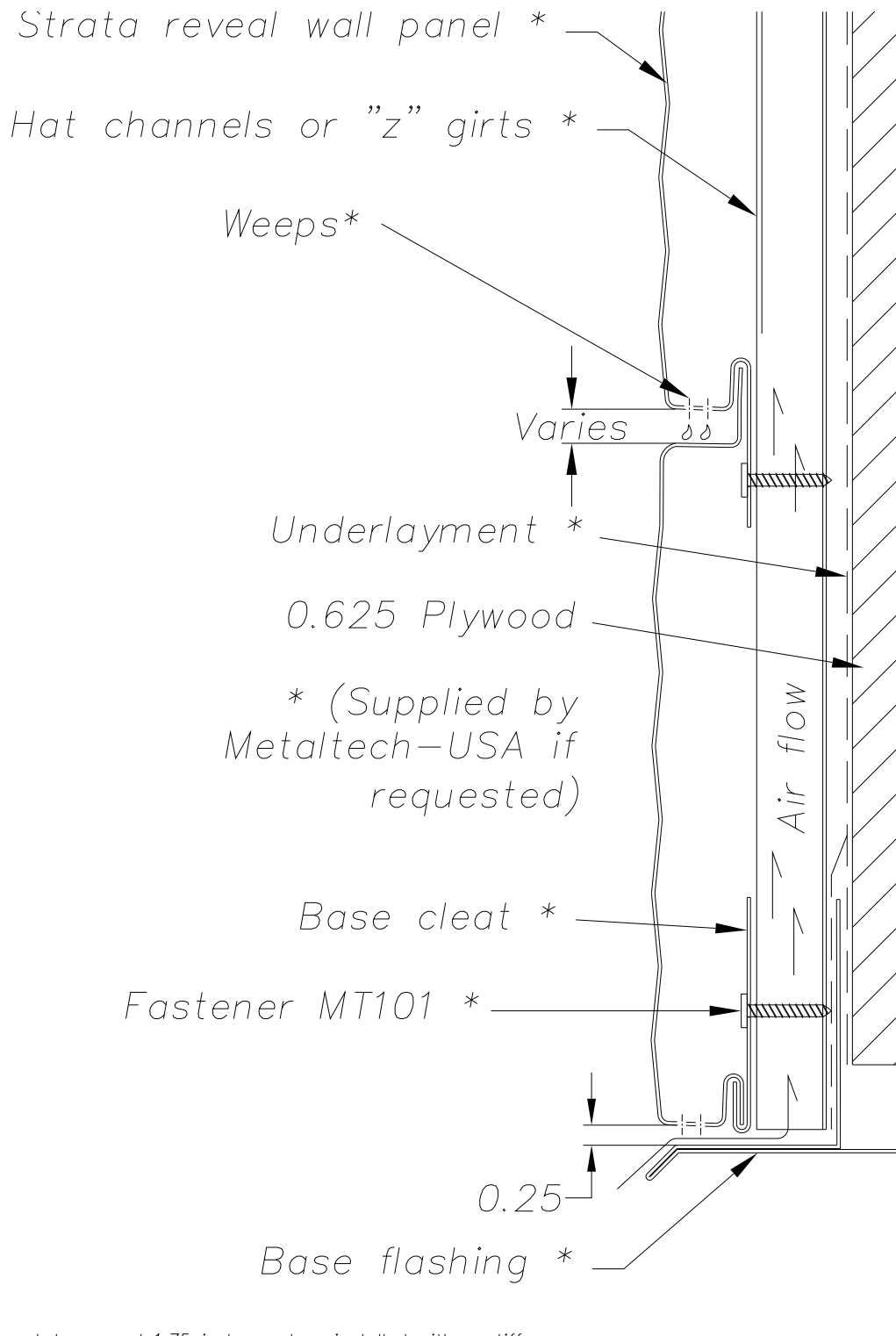
<p>UNLESS OTHERWISE SPECIFIED DIMENSIONS ARE IN INCHES</p> 	<p>DRAWING NAME: HEAD DETAIL - OPTION 3</p>		<p>REVISION NO: A</p>	<p>DATED CREATED: 12/18/2015</p>
	<p>DWG NO: MT_STRPH_1209</p>		<p>CHECKED BY: THENDERSON</p>	<p>APPROVED BY: ESIMONSEN</p>
	<p>PROJECT NAME: WINDOW DETAILS</p>			
	<p>SCALE: NTS</p>	<p>SHEET NO: 9 OF 10</p>	<p>SIZE: A</p>	<p>TOLERANCES: ANGULAR ±1° LINEAR ±0.06</p>



NOTE:
 Information and details are only a baseline for system and installation. Modification to meet project requirement is the responsibility of the designer, architect and contractor. MetalTech Global project staff are available to assist throughout the design and build process. © MetalTech Global. All rights reserved.

UNLESS OTHERWISE SPECIFIED DIMENSIONS ARE IN INCHES	DRAWING NAME: HEAD DETAIL - OPTION 4		REVISION NO: A	DATED CREATED: 12/18/2015
	DWG NO: MT_STRPH_1210		CHECKED BY: THENDERSON	APPROVED BY: ESIMONSEN
PROJECT NAME: WINDOW DETAILS				
SCALE: NTS		SHEET NO: 10 OF 10	SIZE: A	TOLERANCES: ANGULAR ±1' LINEAR ±0.06





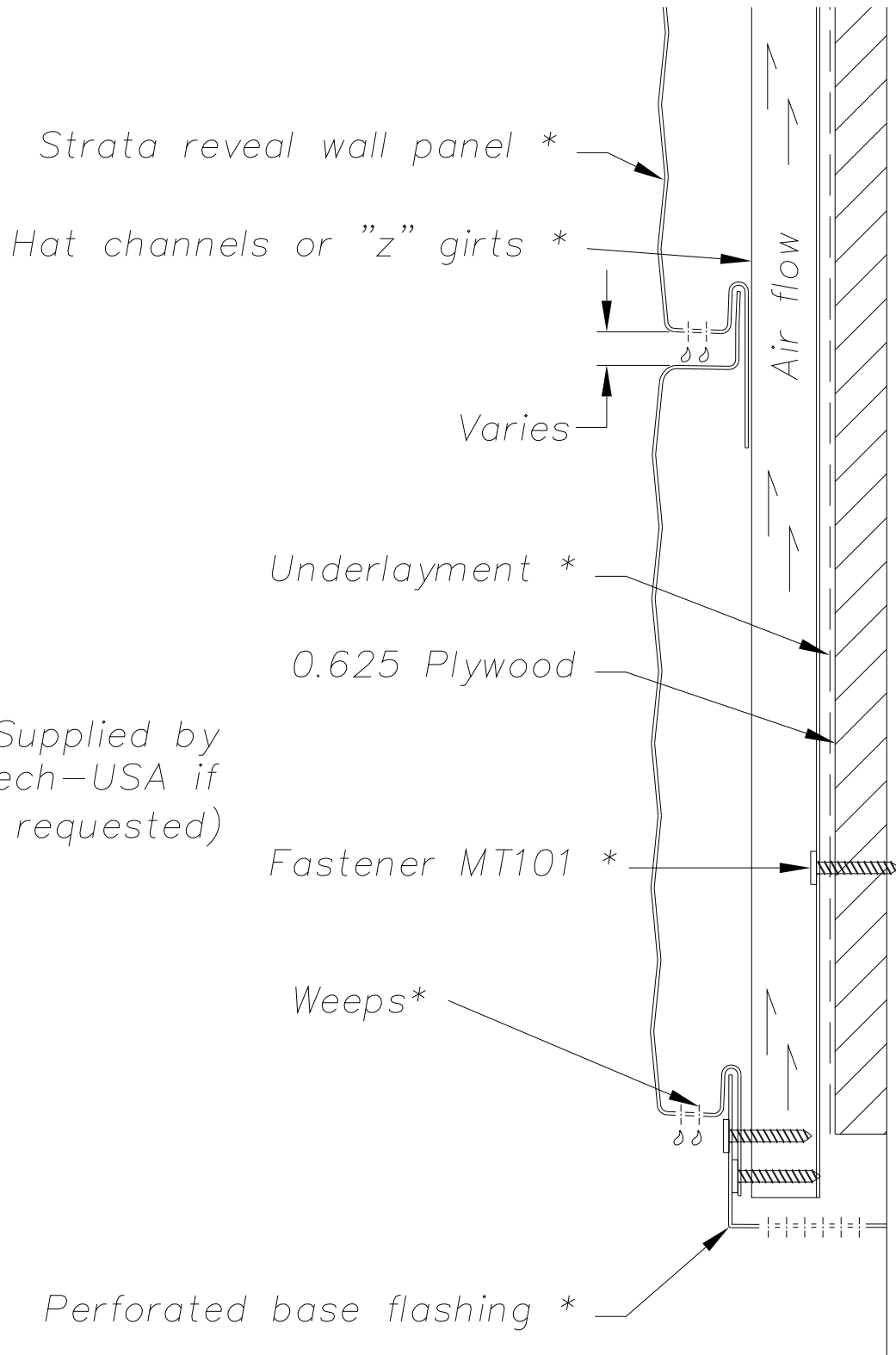
NOTE: Base flashing not to exceed 1.75 inches unless installed with a stiffener

NOTE:

Information and details are only a baseline for system and installation. Modification to meet project requirement is the responsibility of the designer, architect and contractor. MetalTech Global project staff are available to assist throughout the design and build process. © MetalTech Global. All rights reserved.

<p>UNLESS OTHERWISE SPECIFIED DIMENSIONS ARE IN INCHES</p>	<p>DRAWING NAME: BASE DETAIL – OPTION 1</p>		<p>REVISION NO: A</p>	<p>DATED CREATED: 12/18/2015</p>
	<p>DWG NO: MT_STRPH_1301</p>		<p>CHECKED BY: THENDERSON</p>	<p>APPROVED BY: ESIMONSEN</p>
<p>PROJECT NAME: BOTTOM OF WALL DETAILS</p>				
<p>SCALE: NTS</p>		<p>SHEET NO: 1 OF 2</p>	<p>SIZE: A</p>	<p>TOLERANCES: ANGULAR ±1° LINEAR ±0.06</p>




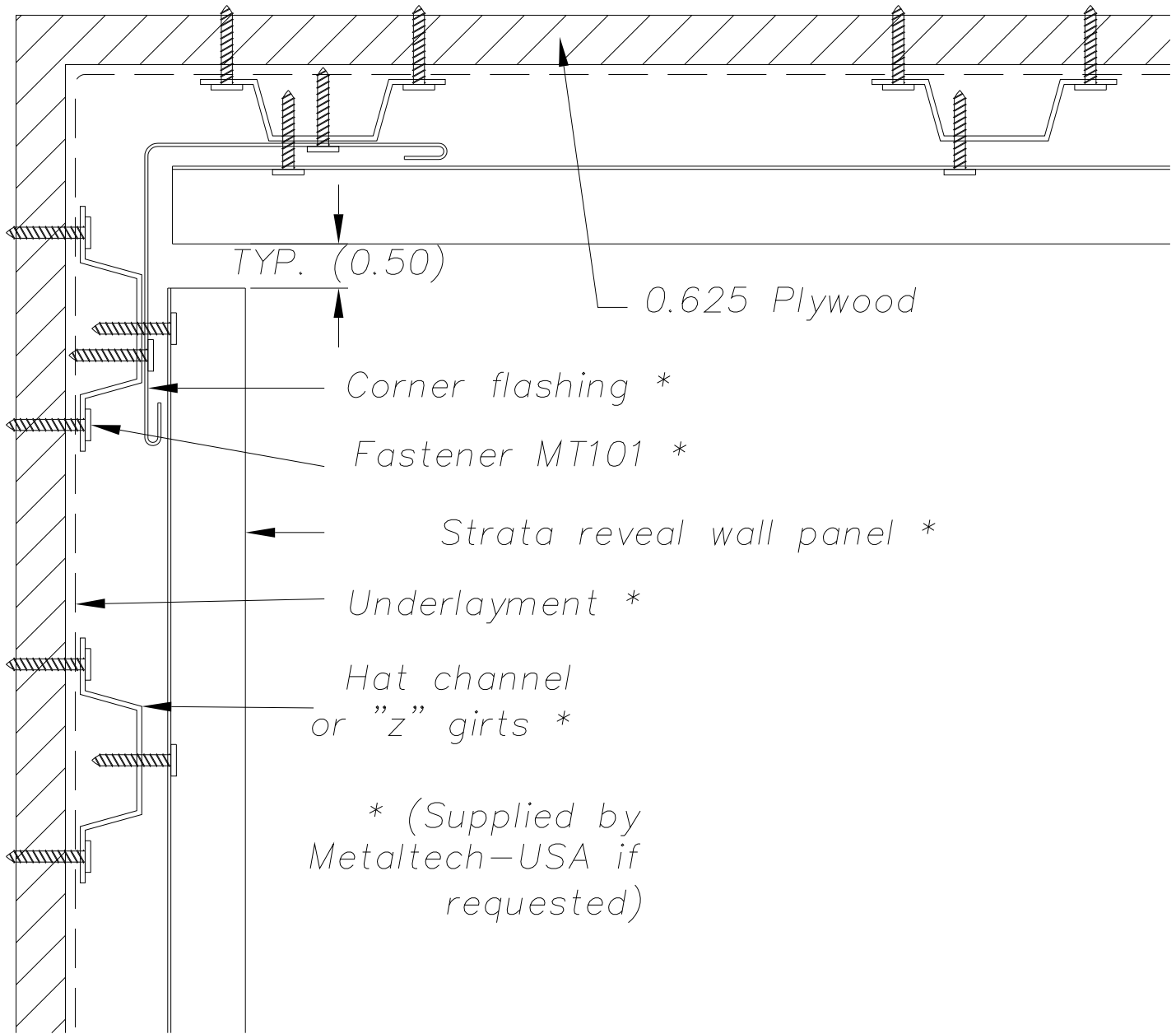


* (Supplied by Metaltech-USA if requested)

NOTE:

Information and details are only a baseline for system and installation. Modification to meet project requirement is the responsibility of the designer, architect and contractor. MetalTech Global project staff are available to assist throughout the design and build process. © MetalTech Global. All rights reserved.

 <p>METALTECH Global a Forza Group Company DESIGNING STRENGTH</p>	<p>DRAWING NAME: BASE DETAIL – OPTION 2</p>		<p>REVISION NO: A</p>	<p>DATED CREATED: 12/18/2015</p>
	<p>DWG NO: MT_STRPH_1302</p>		<p>CHECKED BY: THENDERSON</p>	<p>APPROVED BY: ESIMONSEN</p>
	<p>PROJECT NAME: BOTTOM OF WALL DETAILS</p>			
	<p>SCALE: NTS</p>	<p>SHEET NO: 2 OF 2</p>	<p>SIZE: A</p>	<p>TOLERANCES: ANGULAR ±1° LINEAR ±0.06</p>



NOTE:

Information and details are only a baseline for system and installation. Modification to meet project requirement is the responsibility of the designer, architect and contractor. MetalTech Global project staff are available to assist throughout the design and build process. © MetalTech Global. All rights reserved.

UNLESS OTHERWISE SPECIFIED
DIMENSIONS ARE IN INCHES

DRAWING NAME:
INTERIOR CORNER – OPTION 1

REVISION NO:
A

DATED CREATED:
12/18/2015

DWG NO:
MT_STRPH_1401

CHECKED BY:
THENDERSON

APPROVED BY:
ESIMONSEN

PROJECT NAME:
INTERIOR DETAILS

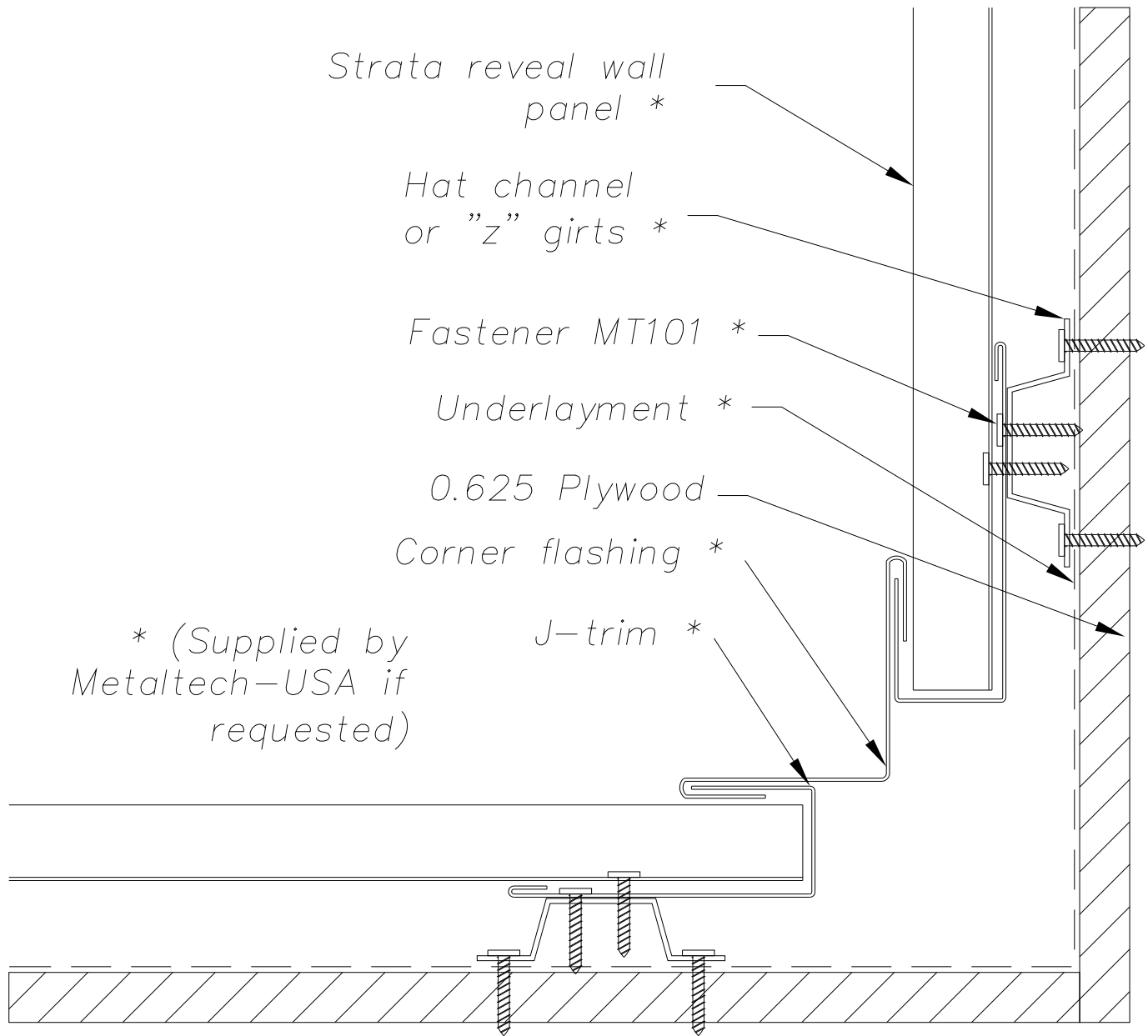
SCALE:
NTS

SHEET NO:
1 OF 3

SIZE:
A

TOLERANCES:
ANGULAR ±1° LINEAR ±0.06





NOTE:
 Information and details are only a baseline for system and installation. Modification to meet project requirement is the responsibility of the designer, architect and contractor. MetalTech Global project staff are available to assist throughout the design and build process. © MetalTech Global. All rights reserved.

UNLESS OTHERWISE SPECIFIED DIMENSIONS ARE IN INCHES	DRAWING NAME: INTERIOR CORNER – OPTION 2		REVISION NO: A	DATED CREATED: 12/18/2015
	DWG NO: MT_STRPH_1402		CHECKED BY: THENDERSON	APPROVED BY: ESIMONSEN
PROJECT NAME: INTERIOR DETAILS				
SCALE: NTS		SHEET NO: 2 OF 3	SIZE: A	TOLERANCES: ANGULAR ±1° LINEAR ±0.06



Strata reveal wall panel *

Hat channel or "z" girts *

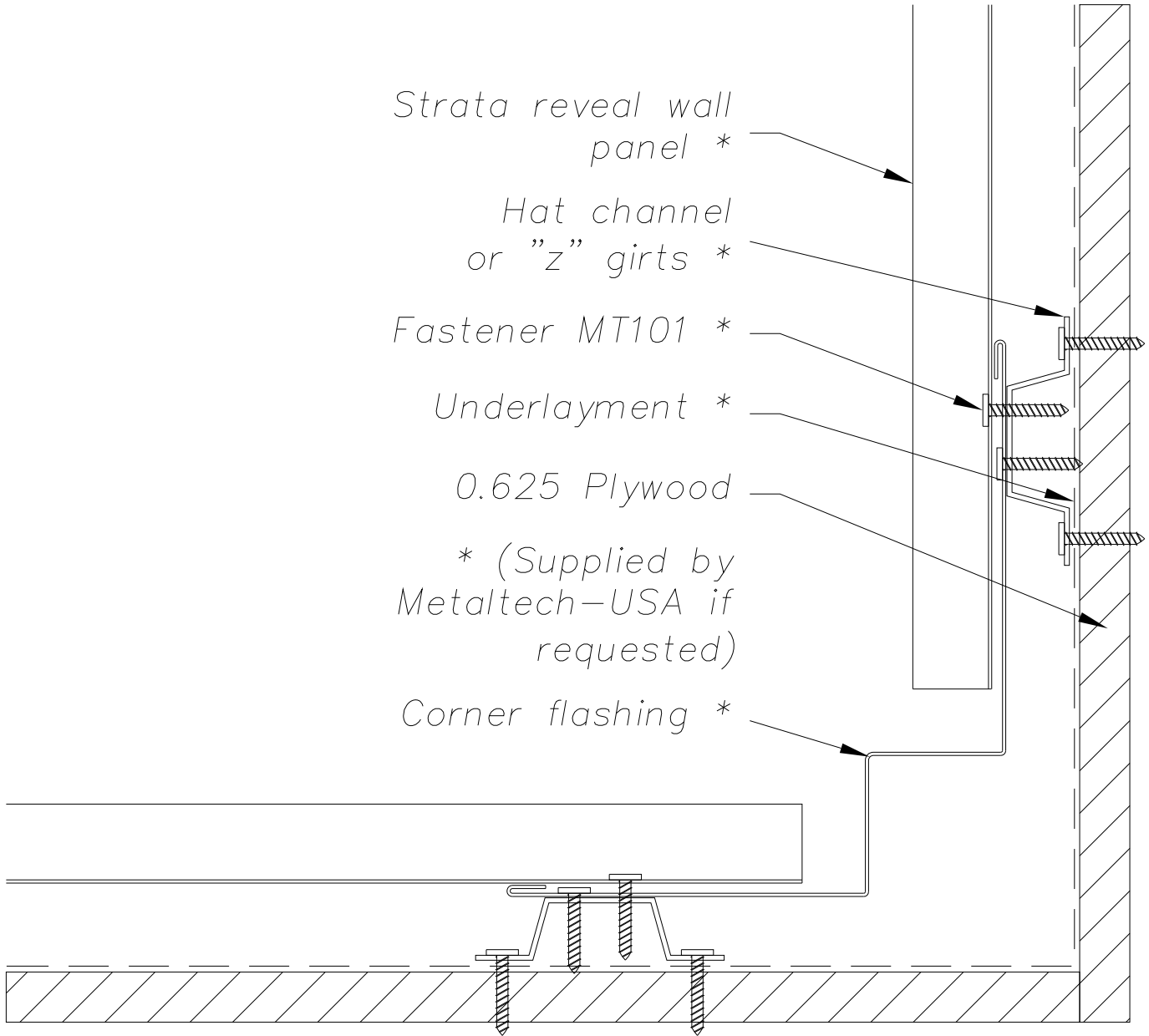
Fastener MT101 *

Underlayment *

0.625 Plywood

* (Supplied by Metaltech-USA if requested)

Corner flashing *



NOTE:

Information and details are only a baseline for system and installation. Modification to meet project requirement is the responsibility of the designer, architect and contractor. MetalTech Global project staff are available to assist throughout the design and build process. © MetalTech Global. All rights reserved.

UNLESS OTHERWISE SPECIFIED DIMENSIONS ARE IN INCHES

DRAWING NAME:
INTERIOR CORNER – OPTION 3

REVISION NO:
A

DATED CREATED:
12/18/2015

DWG NO:
MT_STRPH_1403

CHECKED BY:
THENDERSON

APPROVED BY:
ESIMONSEN

PROJECT NAME:
INTERIOR DETAILS

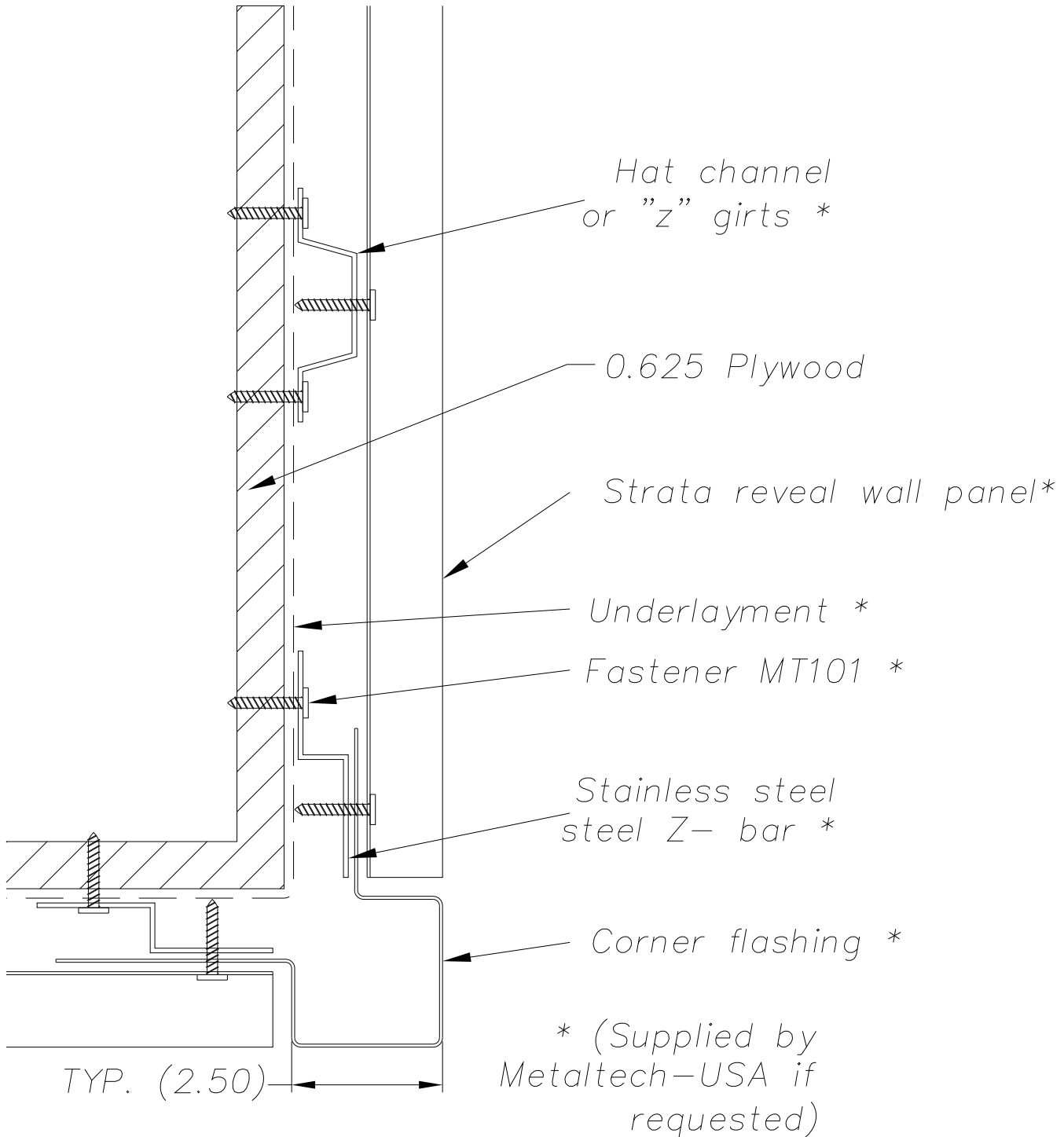
SCALE:
NTS

SHEET NO:
3 OF 3

SIZE:
A

TOLERANCES:
ANGULAR ±1° LINEAR ±0.06

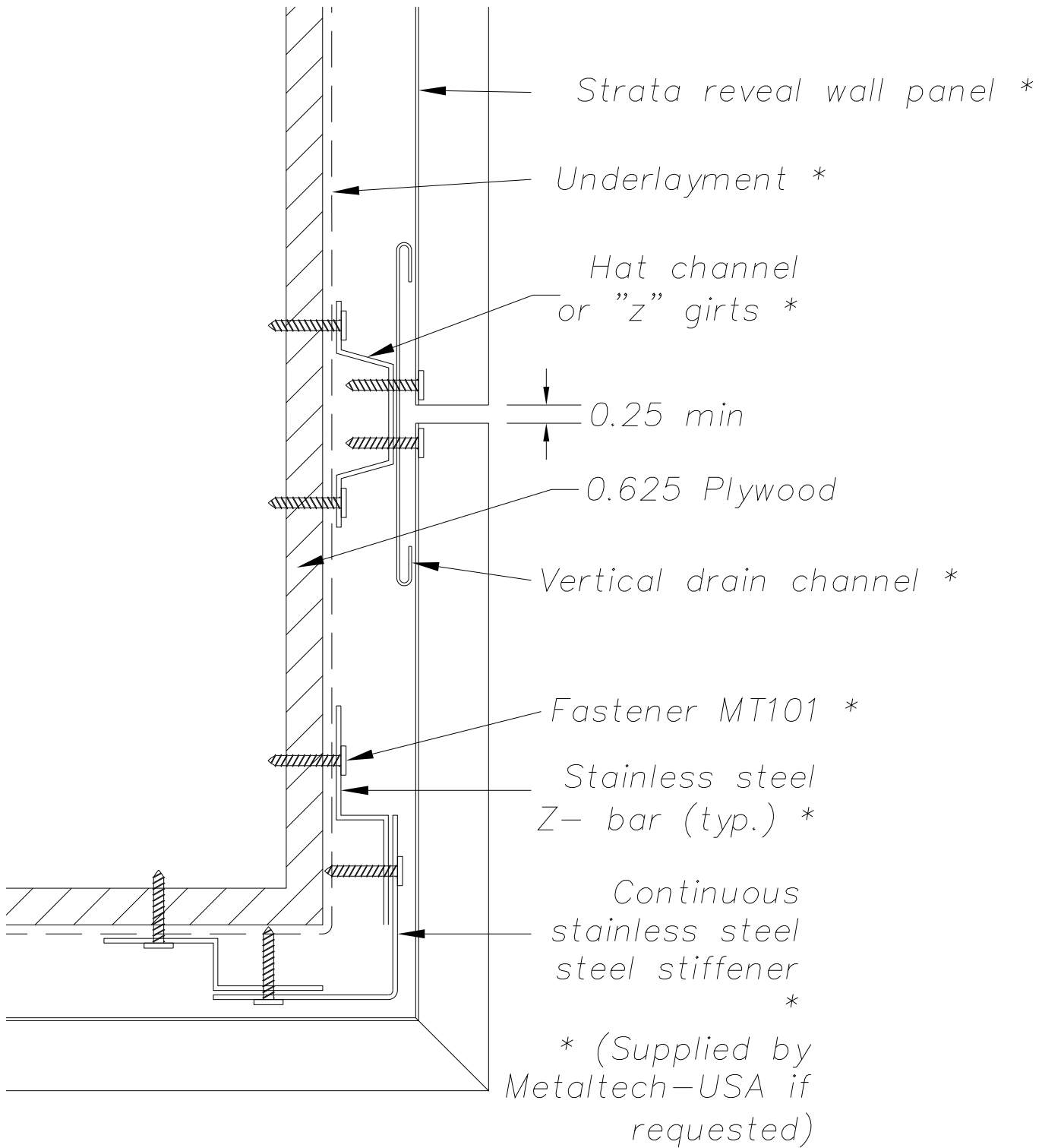




NOTE:

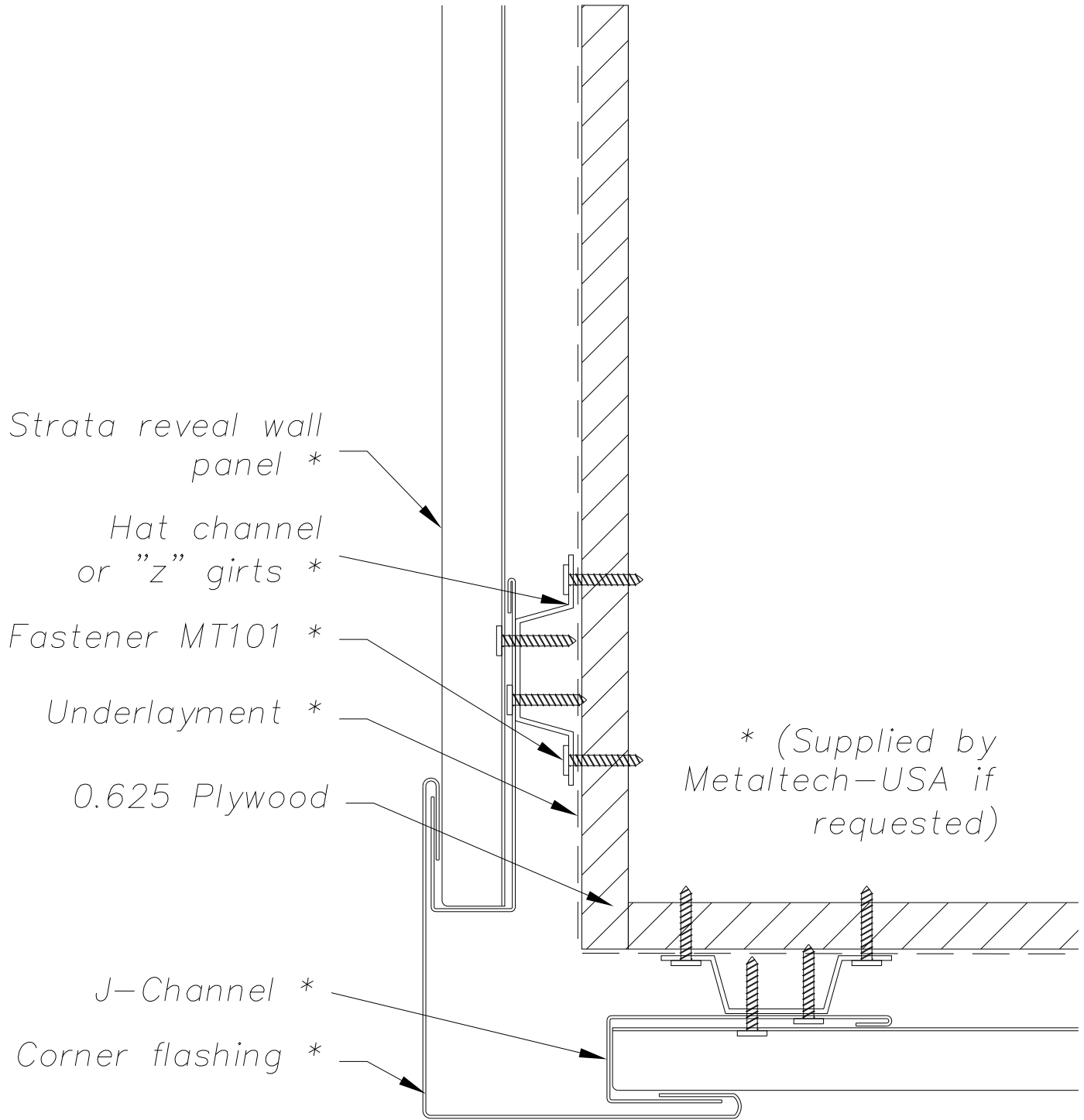
Information and details are only a baseline for system and installation. Modification to meet project requirement is the responsibility of the designer, architect and contractor. MetalTech Global project staff are available to assist throughout the design and build process. © MetalTech Global. All rights reserved.

	DRAWING NAME: EXTERIOR CORNER - OPTION 1		REVISION NO: A	DATED CREATED: 12/18/2015
	DWG NO: MT_STRPH_1501		CHECKED BY: THENDERSON	APPROVED BY: ESIMONSEN
	PROJECT NAME: EXTERIOR DETAILS			
	SCALE: NTS	SHEET NO: 1 OF 4	SIZE: A	TOLERANCES: ANGULAR ±1° LINEAR ±0.06




NOTE:
Information and details are only a baseline for system and installation. Modification to meet project requirement is the responsibility of the designer, architect and contractor. MetalTech Global project staff are available to assist throughout the design and build process. © MetalTech Global. All rights reserved.

<p>UNLESS OTHERWISE SPECIFIED DIMENSIONS ARE IN INCHES</p>	<p>DRAWING NAME: EXTERIOR CORNER - OPTION 2</p>		<p>REVISION NO: A</p>	<p>DATED CREATED: 12/18/2015</p>	
	<p>DWG NO: MT_STRPH_1502</p>		<p>CHECKED BY: THENDERSON</p>	<p>APPROVED BY: ESIMONSEN</p>	
	<p>PROJECT NAME: EXTERIOR DETAILS</p>				
	<p>SCALE: NTS</p>	<p>SHEET NO: 2 OF 4</p>	<p>SIZE: A</p>	<p>TOLERANCES: ANGULAR ±1' LINEAR ±0.06</p>	



NOTE:
 Information and details are only a baseline for system and installation. Modification to meet project requirement is the responsibility of the designer, architect and contractor. MetalTech Global project staff are available to assist throughout the design and build process. © MetalTech Global. All rights reserved.

 <p>METALTECH Global <small>a Forza Group Company</small> DESIGNING STRENGTH</p>	DRAWING NAME: EXTERIOR CORNER - OPTION 3		REVISION NO: A	DATED CREATED: 12/18/2015
	DWG NO: MT_STRPH_1503		CHECKED BY: THENDERSON	APPROVED BY: ESIMONSEN
	PROJECT NAME: EXTERIOR DETAILS			
	SCALE: NTS	SHEET NO: 3 OF 4	SIZE: A	TOLERANCES: ANGULAR ±1° LINEAR ±0.06

* (Supplied by
Metaltech-USA if
requested)

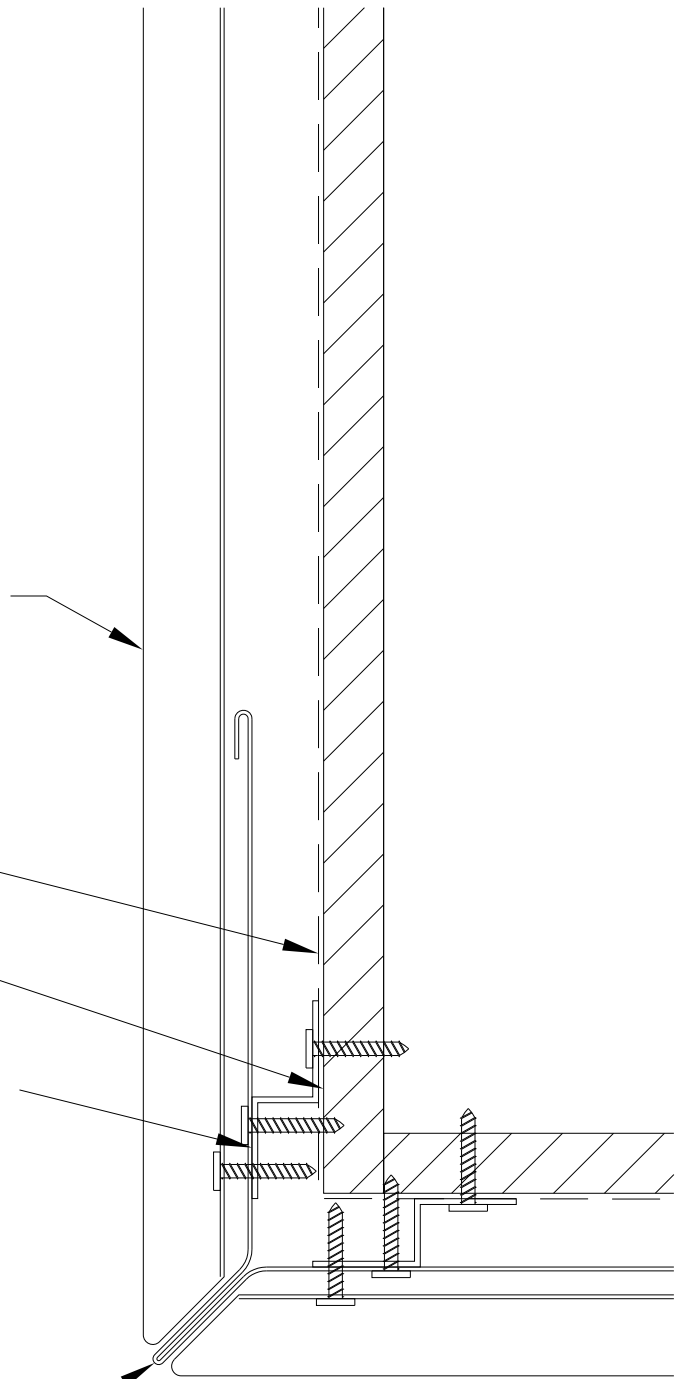
Strata reveal wall panel *

Underlayment *

0.625 Plywood

Fastener MT101 *

Corner flashing *



NOTE:

Information and details are only a baseline for system and installation. Modification to meet project requirement is the responsibility of the designer, architect and contractor. MetalTech Global project staff are available to assist throughout the design and build process. © MetalTech Global. All rights reserved.

UNLESS OTHERWISE SPECIFIED
DIMENSIONS ARE IN INCHES

DRAWING NAME:
EXTERIOR CORNER - OPTION 4

REVISION NO:
A

DATED CREATED:
12/18/2015

DWG NO:
MT_STRPH_1504

CHECKED BY:
THENDERSON

APPROVED BY:
ESIMONSEN

PROJECT NAME:
EXTERIOR DETAILS

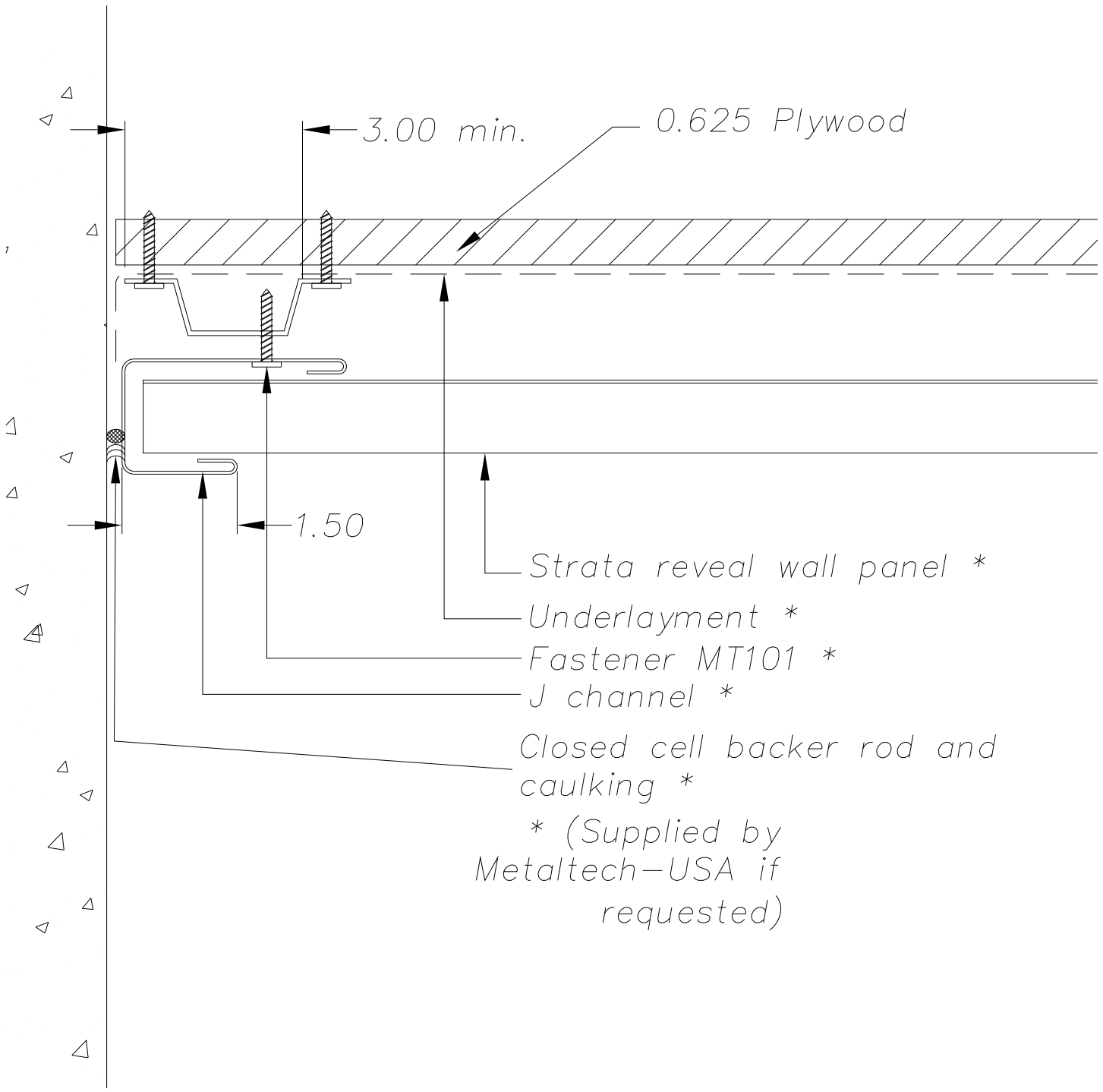
SCALE:
NTS

SHEET NO:
4 OF 4

SIZE:
A

TOLERANCES:
ANGULAR ±1° LINEAR ±0.06





* (Supplied by
Metaltech-USA if
requested)

NOTE:
Information and details are only a baseline for system and installation. Modification to meet project requirement is the responsibility of the designer, architect and contractor. MetalTech Global project staff are available to assist throughout the design and build process. © MetalTech Global. All rights reserved.

	UNLESS OTHERWISE SPECIFIED DIMENSIONS ARE IN INCHES		DRAWING NAME: END OF WALL DETAIL	REVISION NO: A	DATED CREATED: 12/18/2015
			DWG NO: MT_STRPH_1601	CHECKED BY: THENDERSON	APPROVED BY: ESIMONSEN
	PROJECT NAME: END OF WALL DETAILS				
	SCALE: NTS	SHEET NO: 1 OF 1	SIZE: A	TOLERANCES: ANGULAR ±1° LINEAR ±0.06	