

Interlocking Reveal Panel System

INDEX OF DRAWINGS

GENERAL DETAILS

MT_IRWPV_1001 – Interlocking Reveal Panel Section (Vertical)
 MT_IRWPV_1002 – Interlocking Reveal Panel Section (Isometric)
 MT_IRWPV_1003 – Horizontal Joint Detail – Option 1
 MT_IRWPV_1004 – Horizontal Joint Detail – Option 2
 MT_IRWPV_1005 – Horizontal Joint Detail – Option 3
 MT_IRWPV_1006 – Horizontal Joint Detail – Option 4
 MT_IRWPV_1007 – Hat Channel Spacing
 MT_IRWPV_1008 – Fasteners

TOP OF WALL DETAILS

MT_IRWPV_1101 – Parapet Detail – Option 1
 MT_IRWPV_1102 – Parapet Detail – Option 2
 MT_IRWPV_1103 – Parapet Detail – Option 3
 MT_IRWPV_1104 – Wall To Soffit Transition
 MT_IRWPV_1105 – Soffit To Fascia Transition

WINDOW DETAILS

MT_IRWPV_1201 – Jamb Detail – Option 1
 MT_IRWPV_1202 – Jamb Detail – Option 2
 MT_IRWPV_1203 – Head Detail – Option 1
 MT_IRWPV_1204 – Head Detail – Option 2
 MT_IRWPV_1205 – Head Detail – Option 3
 MT_IRWPV_1206 – Sill Detail – Option 1

BOTTOM OF WALL DETAILS

MT_IRWPV_1301 – Base Detail – Option 1
 MT_IRWPV_1302 – Base Detail – Option 2

INTERIOR DETAILS

MT_IRWPV_1401 – Interior Corner – Option 1
 MT_IRWPV_1402 – Interior Corner – Option 2
 MT_IRWPV_1402 – Interior Corner – Option 3

EXTERIOR DETAILS


MT_IRWPV_1501 – Exterior Corner – Option 1
 MT_IRWPV_1502 – Exterior Corner – Option 2
 MT_IRWPV_1502 – Exterior Corner – Option 3

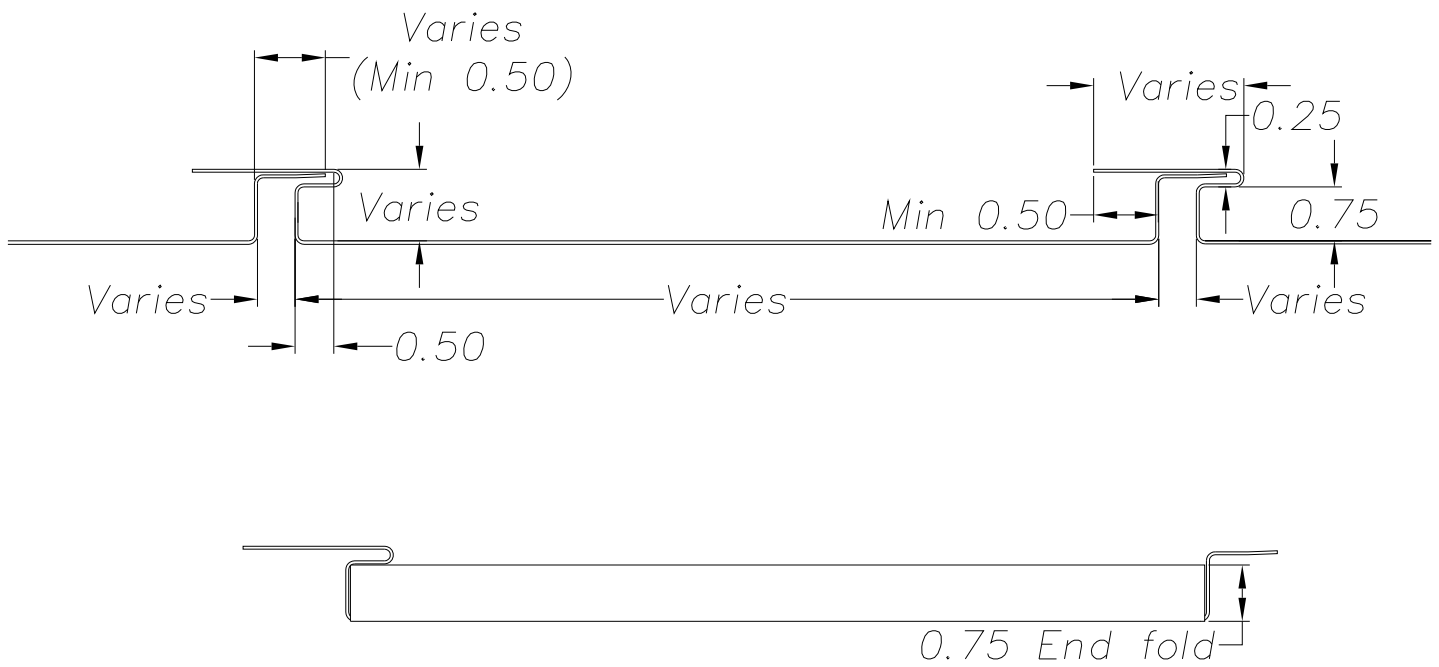
END OF WALL DETAILS

MT_IRWPV_1601 – End Of Wall Detail


NOTE:

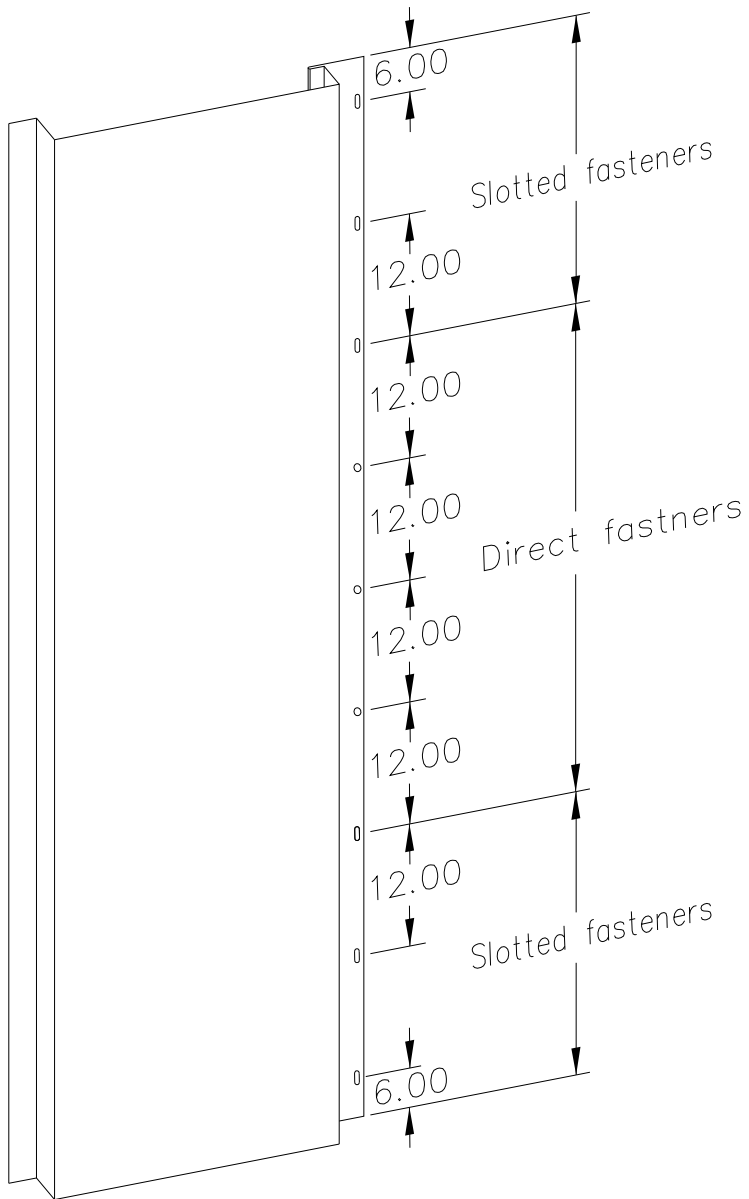
Information and details are only a baseline for system and installation. Modification to meet project requirement is the responsibility of the designer, architect and contractor. MetalTech Global project staff are available to assist throughout the design and build process. © MetalTech Global. All rights reserved.

	UNLESS OTHERWISE SPECIFIED DIMENSIONS ARE IN INCHES		DRAWING NAME: INDEX	REVISION NO: A	DATED CREATED: 11/7/2014
	DWG NO: MT_IRWPV_0000		CHECKED BY: ESIMONSEN		APPROVED BY: ESIMONSEN
PROJECT NAME: INDEX			SCALE: NTS	SHEET NO: 1 OF 1	SIZE: A
TOLERANCES: ANGULAR ±1° LINEAR ±0.06					



NOTE:
 Information and details are only a baseline for system and installation. Modification to meet project requirement is the responsibility of the designer, architect and contractor. MetalTech Global project staff are available to assist throughout the design and build process. © MetalTech Global. All rights reserved.

UNLESS OTHERWISE SPECIFIED DIMENSIONS ARE IN INCHES	DRAWING NAME: INTERLOCKING REVEAL PANEL (VERTICAL)	REVISION NO: A	DATED CREATED: 11/6/2014
	DWG NO: MT_IRWPV_1001	CHECKED BY: ESIMONSEN	APPROVED BY: ESIMONSEN
	PROJECT NAME: GENERAL DETAILS		
SCALE: NTS	SHEET NO: 1 OF 8	SIZE: A	TOLERANCES: ANGULAR ±1° LINEAR ±0.06




Fastener Spacing:

Stainless steel fasteners @ 12" O.C. Slotted fastener points at 12" O.C. as needed per panel. Slotted fastener points allow for expansion and contraction.

Panels 8'-0" or less do not require slotted fastener holes.

NOTE:

Information and details are only a baseline for system and installation. Modification to meet project requirement is the responsibility of the designer, architect and contractor. MetalTech Global project staff are available to assist throughout the design and build process. © MetalTech Global. All rights reserved.

	UNLESS OTHERWISE SPECIFIED DIMENSIONS ARE IN INCHES		DRAWING NAME: INTERLOCKING REVEAL PANEL (ISOMETRIC)	REVISION NO: A	DATED CREATED: 11/6/2014
			DWG NO: MT_IRWPV_1002	CHECKED BY: ESIMONSEN	APPROVED BY: ESIMONSEN
	PROJECT NAME: GENERAL DETAILS				
	SCALE: NTS	SHEET NO: 2 OF 8	SIZE: A	TOLERANCES: ANGULAR ±1° LINEAR ±0.06	

Interlocking reveal wall panel *

Underlayment *

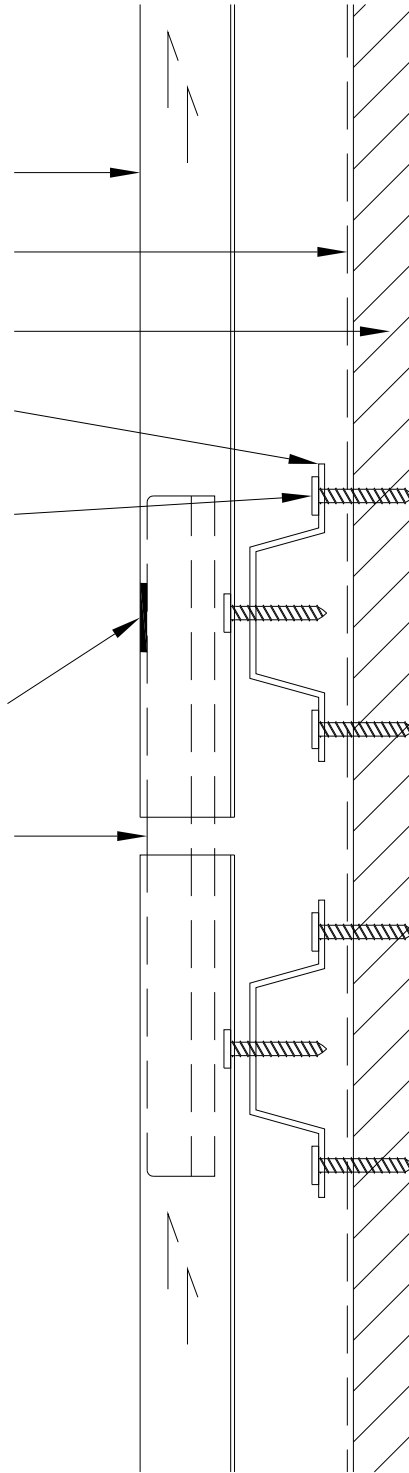
0.625 Plywood

Hat channels or "z" girts *

Fastener MT101 *

VHB structural bonding
tape single side
attachement

Splice Plate *



NOTE:

Information and details are only a baseline for system and installation. Modification to meet project requirement is the responsibility of the designer, architect and contractor. MetalTech Global project staff are available to assist throughout the design and build process. © MetalTech Global. All rights reserved.

UNLESS OTHERWISE SPECIFIED
DIMENSIONS ARE IN INCHES

DRAWING NAME:
HORIZONTAL JOINT DETAIL – OPTION 1

REVISION NO:
A

DATED CREATED:
11/6/2014



DWG NO:
MT_IRWPV_1003

CHECKED BY:
ESIMONSEN

APPROVED BY:
ESIMONSEN

PROJECT NAME:
GENERAL DETAILS

SCALE:
NTS

SHEET NO:
3 OF 8

SIZE:
A

TOLERANCES:
ANGULAR ±1° LINEAR ±0.06

Interlocking reveal wall panel *

Underlayment *

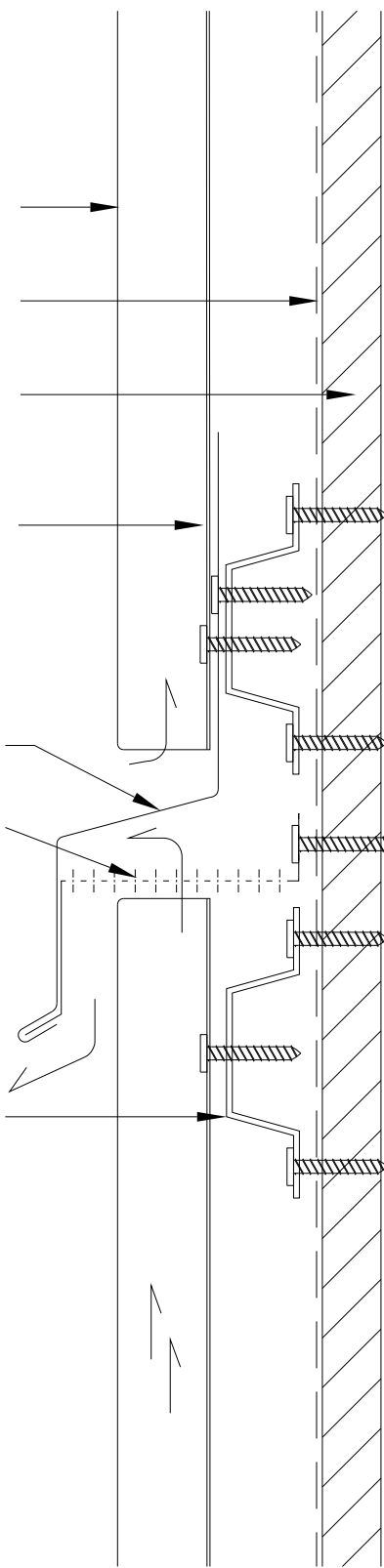
0.625 Plywood

Fastener MT101 *

Cross seam flashing *

Perforated cleat *

Hat channels or "z" girts *



NOTE:

Information and details are only a baseline for system and installation. Modification to meet project requirement is the responsibility of the designer, architect and contractor. MetalTech Global project staff are available to assist throughout the design and build process. © MetalTech Global. All rights reserved.

UNLESS OTHERWISE SPECIFIED
DIMENSIONS ARE IN INCHES

DRAWING NAME:
HORIZONTAL JOINT DETAIL – OPTION 2

REVISION NO:
A

DATED CREATED:
11/6/2014

DWG NO:
MT_IRWPV_1004

CHECKED BY:
ESIMONSEN

APPROVED BY:
ESIMONSEN

PROJECT NAME:
GENERAL DETAILS

SCALE:
NTS

SHEET NO:
4 OF 8

SIZE:
A

TOLERANCES:
ANGULAR ±1° LINEAR ±0.06



Interlocking reveal wall panel *

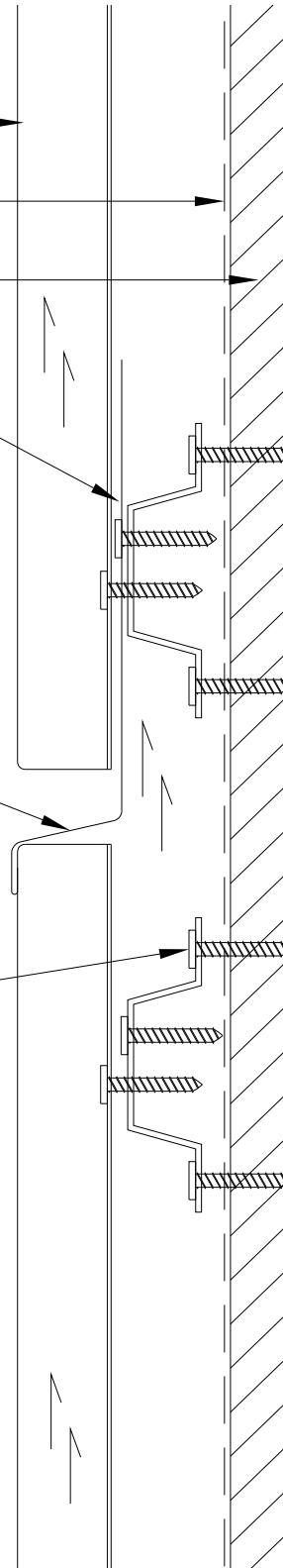
Underlayment *

0.625 Plywood

Hat channels or "z" girts *

Cross seam flashing *

Fastener MT101 *



NOTE:

Information and details are only a baseline for system and installation. Modification to meet project requirement is the responsibility of the designer, architect and contractor. MetalTech Global project staff are available to assist throughout the design and build process. © MetalTech Global. All rights reserved.

UNLESS OTHERWISE SPECIFIED
DIMENSIONS ARE IN INCHES

DRAWING NAME:
HORIZONTAL JOINT DETAIL – OPTION 3

REVISION NO:
A

DATED CREATED:
11/6/2014



DWG NO:
MT_IRWPV_1005

CHECKED BY:
ESIMONSEN

APPROVED BY:
ESIMONSEN

PROJECT NAME:
GENERAL DETAILS

SCALE:
NTS

SHEET NO:
5 OF 8

SIZE:
A

TOLERANCES:
ANGULAR ±1° LINEAR ±0.06

*Interlocking reveal wall panel **

*Underlayment **

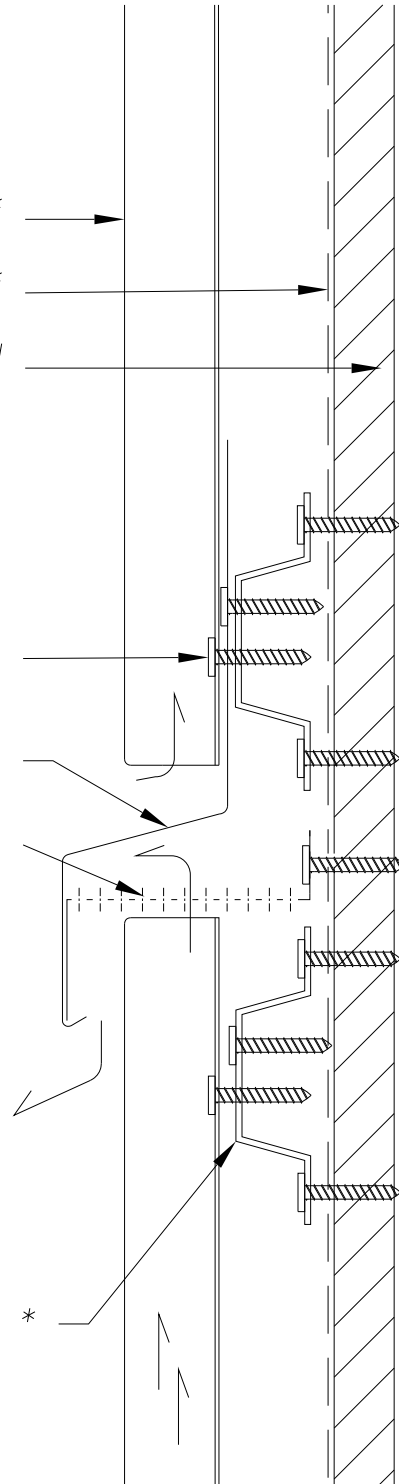
0.625 Plywood

*Fastener MT101 **

*Cross seam flashing **

*Perforated cleat **

*Hat channels or "z" girts **



NOTE:

Information and details are only a baseline for system and installation. Modification to meet project requirement is the responsibility of the designer, architect and contractor. MetalTech Global project staff are available to assist throughout the design and build process. © MetalTech Global. All rights reserved.

UNLESS OTHERWISE SPECIFIED
DIMENSIONS ARE IN INCHES

DRAWING NAME:
HORIZONTAL JOINT DETAIL – OPTION 4

REVISION NO:
A

DATED CREATED:
11/6/2014



DWG NO:
MT_IRWPV_1006

CHECKED BY:
ESIMONSEN

APPROVED BY:
ESIMONSEN

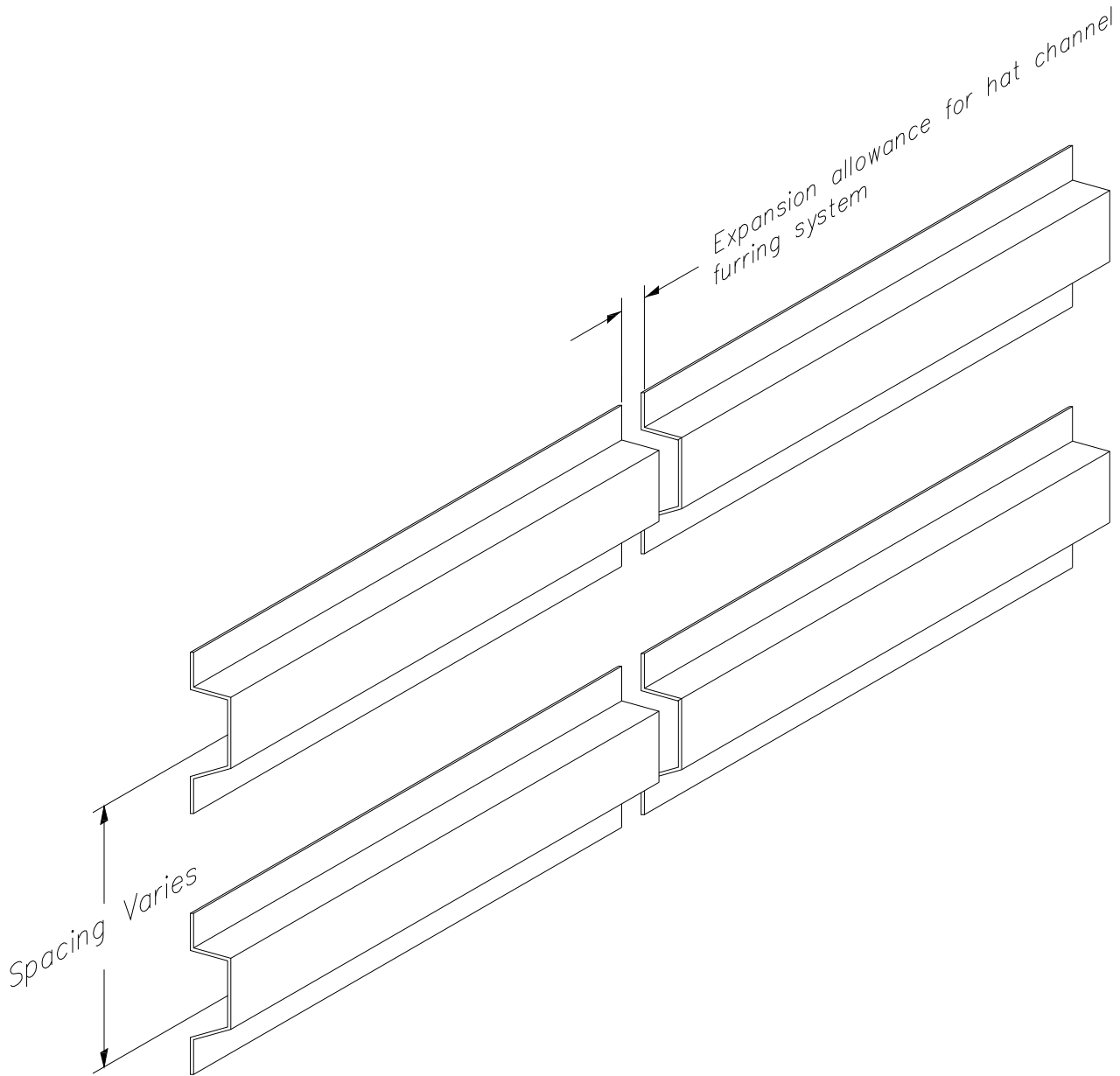
PROJECT NAME:
GENERAL DETAILS

SCALE:
NTS

SHEET NO:
6 OF 8


SIZE:
A

TOLERANCES:
ANGULAR ±1° LINEAR ±0.06



NOTE: Spacing based on material and hat channel lengths. Depending on continuous gross square footage of wall panel, consideration for expansion and contraction should also be given for attached panels, substrate, and single skin.

NOTE:
 Information and details are only a baseline for system and installation. Modification to meet project requirement is the responsibility of the designer, architect and contractor. MetalTech Global project staff are available to assist throughout the design and build process. © MetalTech Global. All rights reserved.

UNLESS OTHERWISE SPECIFIED DIMENSIONS ARE IN INCHES	DRAWING NAME: HAT CHANNEL SPACING	REVISION NO: A	DATED CREATED: 11/14/2014
	DWG NO: MT_IRWPV_1007	CHECKED BY: ESIMONSEN	APPROVED BY: ESIMONSEN
	PROJECT NAME: GENERAL DETAILS		
SCALE: NTS	SHEET NO: 7 OF 8	SIZE: A	TOLERANCES: ANGULAR ±1° LINEAR ±0.06




MT101
Wood Applications

MT101SX3
Sheet Metal Applications

NOTE:

Information and details are only a baseline for system and installation. Modification to meet project requirement is the responsibility of the designer, architect and contractor. MetalTech Global project staff are available to assist throughout the design and build process. © MetalTech Global. All rights reserved.

UNLESS OTHERWISE SPECIFIED DIMENSIONS ARE IN INCHES	DRAWING NAME: FASTENERS		REVISION NO: A	DATED CREATED: 11/14/2014
	DWG NO: MT_IRWPV_1008		CHECKED BY: ESIMONSEN	APPROVED BY: ESIMONSEN
	PROJECT NAME: GENERAL DETAILS			
SCALE: NTS	SHEET NO: 8 OF 8	SIZE: A	TOLERANCES: ANGULAR ±1° LINEAR ±0.06	

Parapet cap w/proroofting
and 3 degree min. slope *

Enkamat *

Continuous support
angle *

Perforated bug screen
to allow for ventilation *

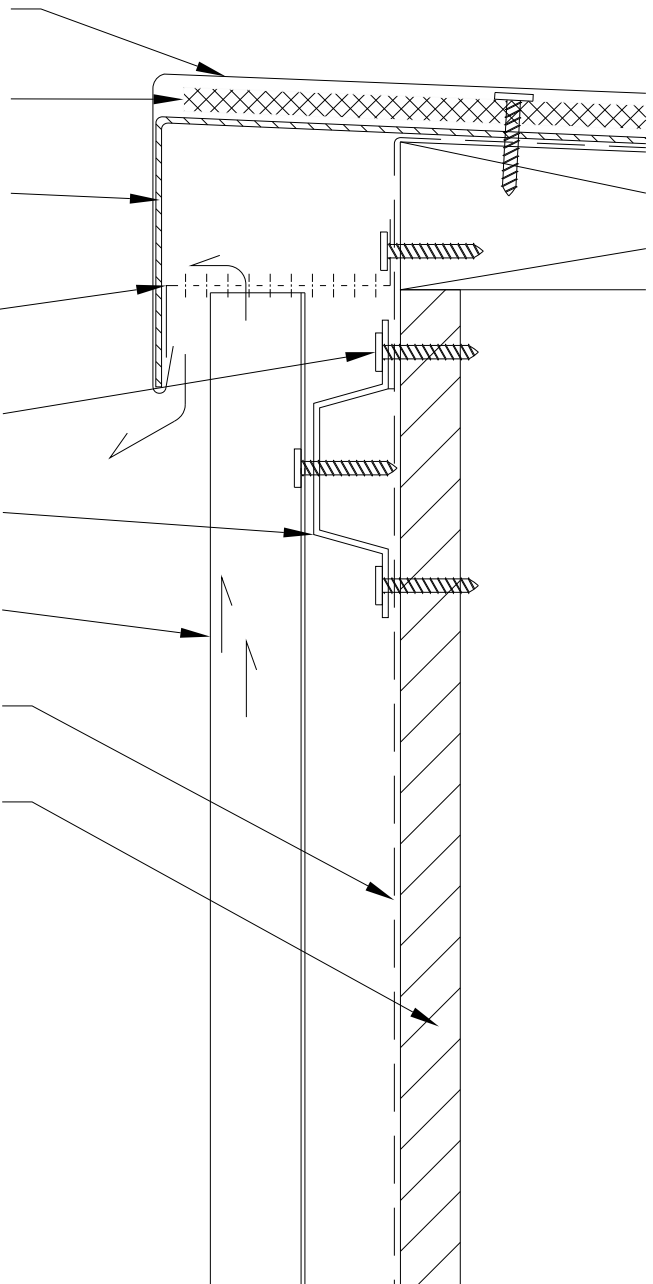
Fastener MT101 *

Hat channels or "z" girts *


Interlocking reveal wall panel *

Underlayment *

0.625 Plywood



NOTE:
Information and details are only a baseline for system and installation. Modification to meet project requirement is the responsibility of the designer, architect and contractor. MetalTech Global project staff are available to assist throughout the design and build process. © MetalTech Global. All rights reserved.

UNLESS OTHERWISE SPECIFIED DIMENSIONS ARE IN INCHES	DRAWING NAME: PARAPET DETAIL – OPTION 1	REVISION NO: A	DATED CREATED: 11/6/2014
	DWG NO: MT_IRWPV_1101	CHECKED BY: ESIMONSEN	APPROVED BY: ESIMONSEN
	PROJECT NAME: TOP OF WALL DETAILS		
SCALE: NTS	SHEET NO: 1 OF 5	SIZE: A	TOLERANCES: ANGULAR ±1° LINEAR ±0.06

Parapet cap w/proroofting
and 3 degree min. slope *

Enkamat *

Continuous support angle *

Perforated bug screen to
allow for ventilation *

Perforated stainless
steel "z" bar *

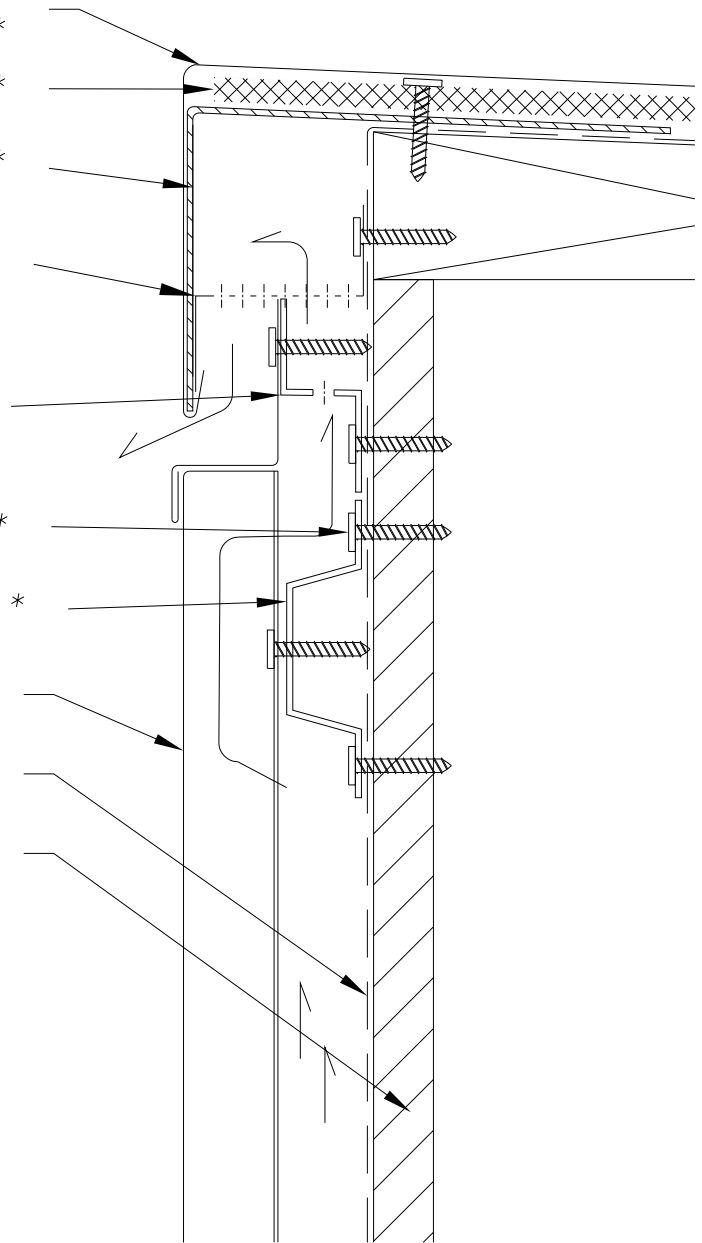
Fastener MT101 *

Hat channels or "z" girts *

Interlocking reveal wall panel *

Underlayment *

0.625 Plywood



NOTE:

Information and details are only a baseline for system and installation. Modification to meet project requirement is the responsibility of the designer, architect and contractor. MetalTech Global project staff are available to assist throughout the design and build process. © MetalTech Global. All rights reserved.

UNLESS OTHERWISE SPECIFIED
DIMENSIONS ARE IN INCHES

DRAWING NAME:
PARAPET DETAIL – OPTION 2

REVISION NO:
A

DATED CREATED:
11/6/2014



DWG NO:
MT_IRWPV_1102

CHECKED BY:
ESIMONSEN

APPROVED BY:
ESIMONSEN

PROJECT NAME:
TOP OF WALL DETAILS

SCALE:
NTS

SHEET NO:
2 OF 5

SIZE:
A

TOLERANCES:
ANGULAR ±1° LINEAR ±0.06

Parapet cap w/proroofting
and 3 degree min. slope *

Enkamat *

Perforated bug screen to
allow for ventilation *

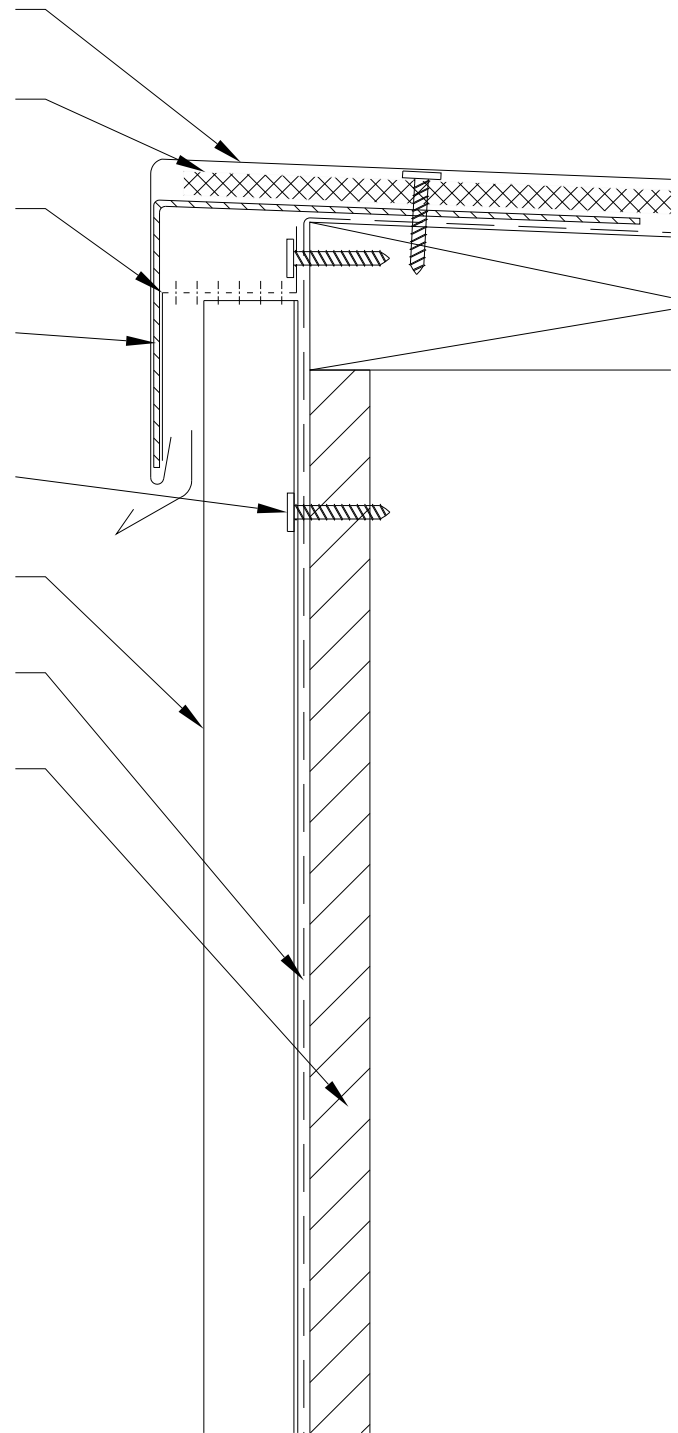
Continuous support angle *

Fastener MT101 *


Interlocking reveal wall panel *

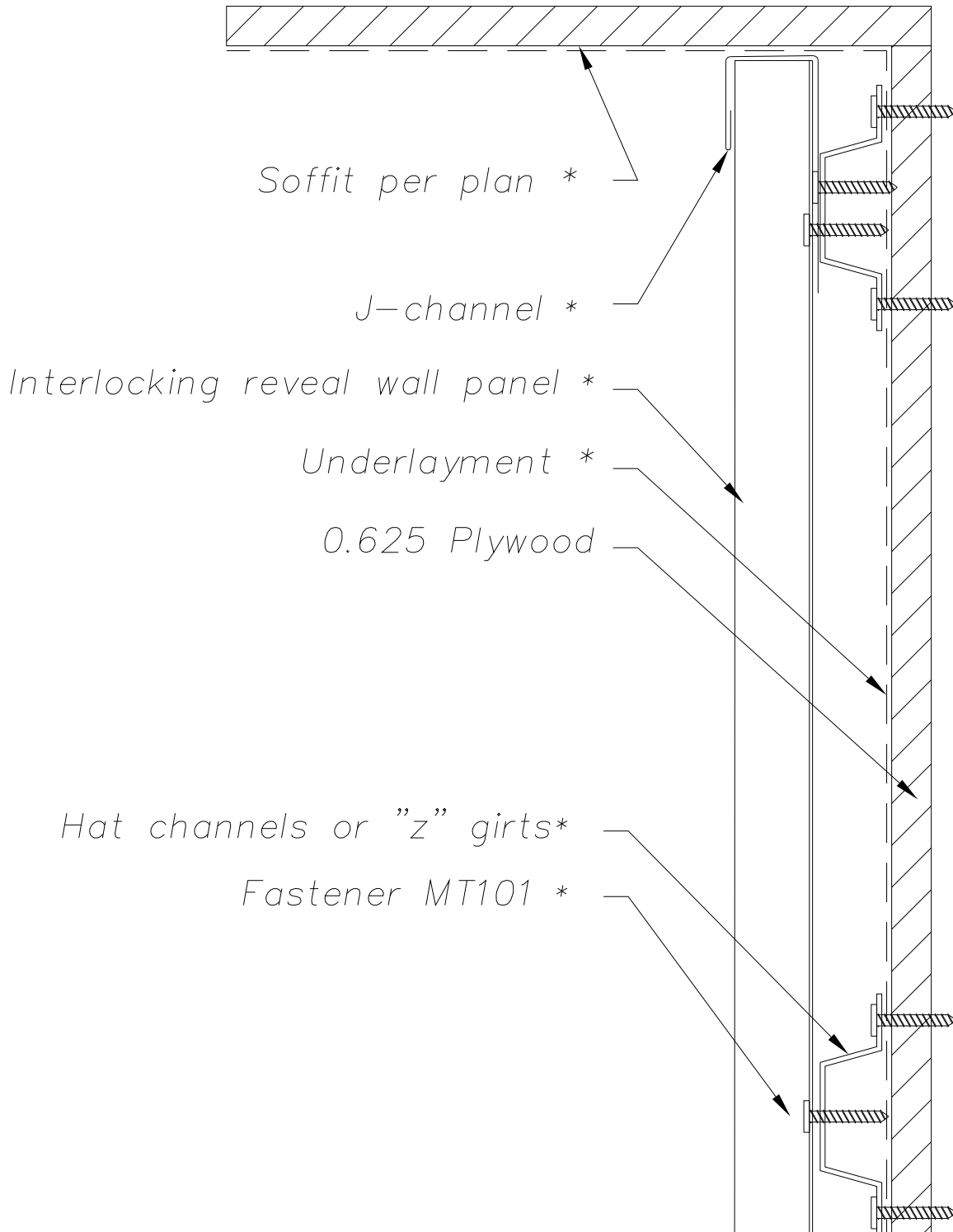
Underlayment *

0.625 Plywood



NOTE:
Information and details are only a baseline for system and installation. Modification to meet project requirement is the responsibility of the designer, architect and contractor. MetalTech Global project staff are available to assist throughout the design and build process. © MetalTech Global. All rights reserved.

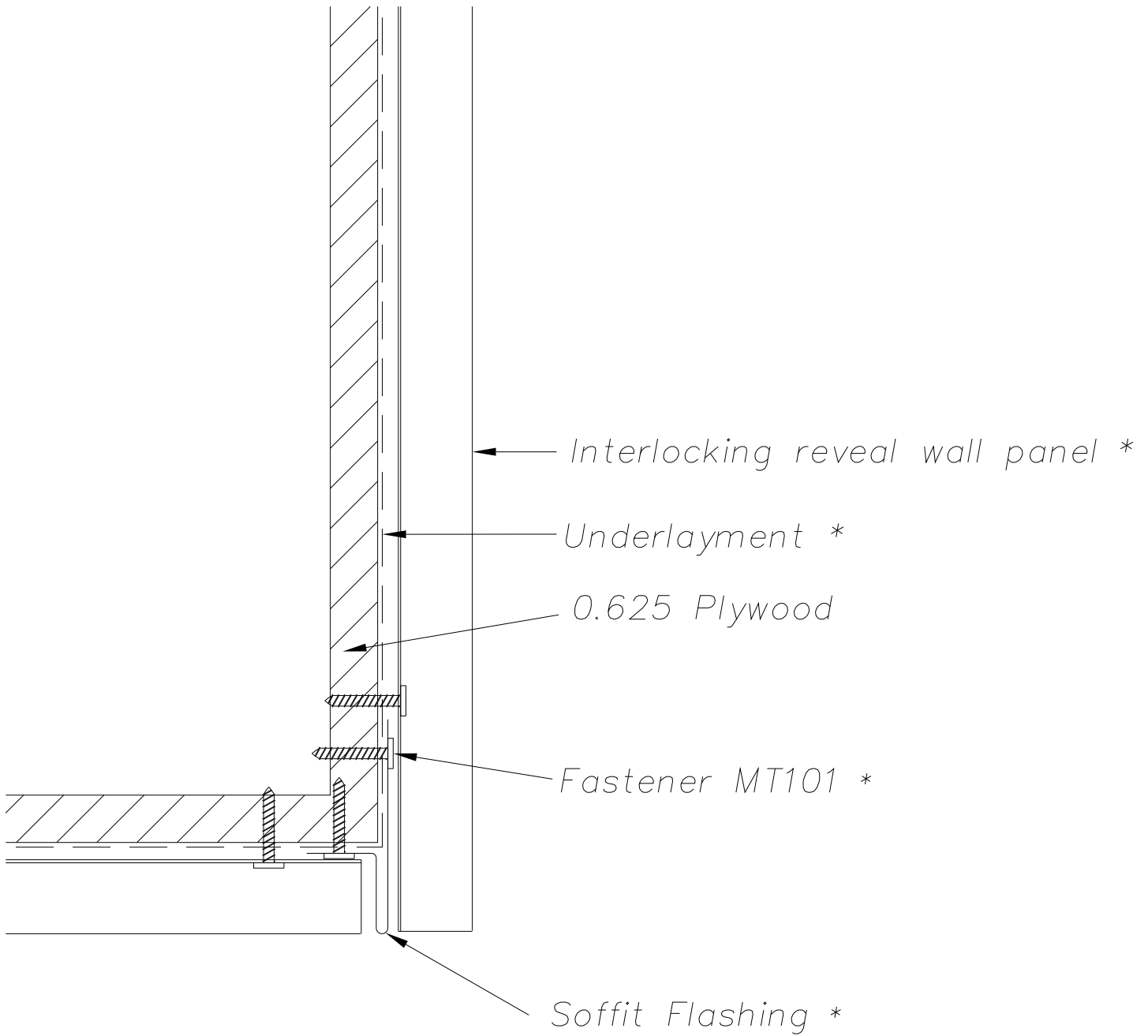
	DRAWING NAME: PARAPET DETAIL – OPTION 3		REVISION NO: A	DATED CREATED: 11/6/2014
	DWG NO: MT_IRWPV_1103		CHECKED BY: ESIMONSEN	APPROVED BY: ESIMONSEN
	PROJECT NAME: TOP OF WALL DETAILS			
	SCALE: NTS	SHEET NO: 3 OF 5	SIZE: A	TOLERANCES: ANGULAR ±1° LINEAR ±0.06




NOTE:
 Information and details are only a baseline for system and installation. Modification to meet project requirement is the responsibility of the designer, architect and contractor. MetalTech Global project staff are available to assist throughout the design and build process. © MetalTech Global. All rights reserved.

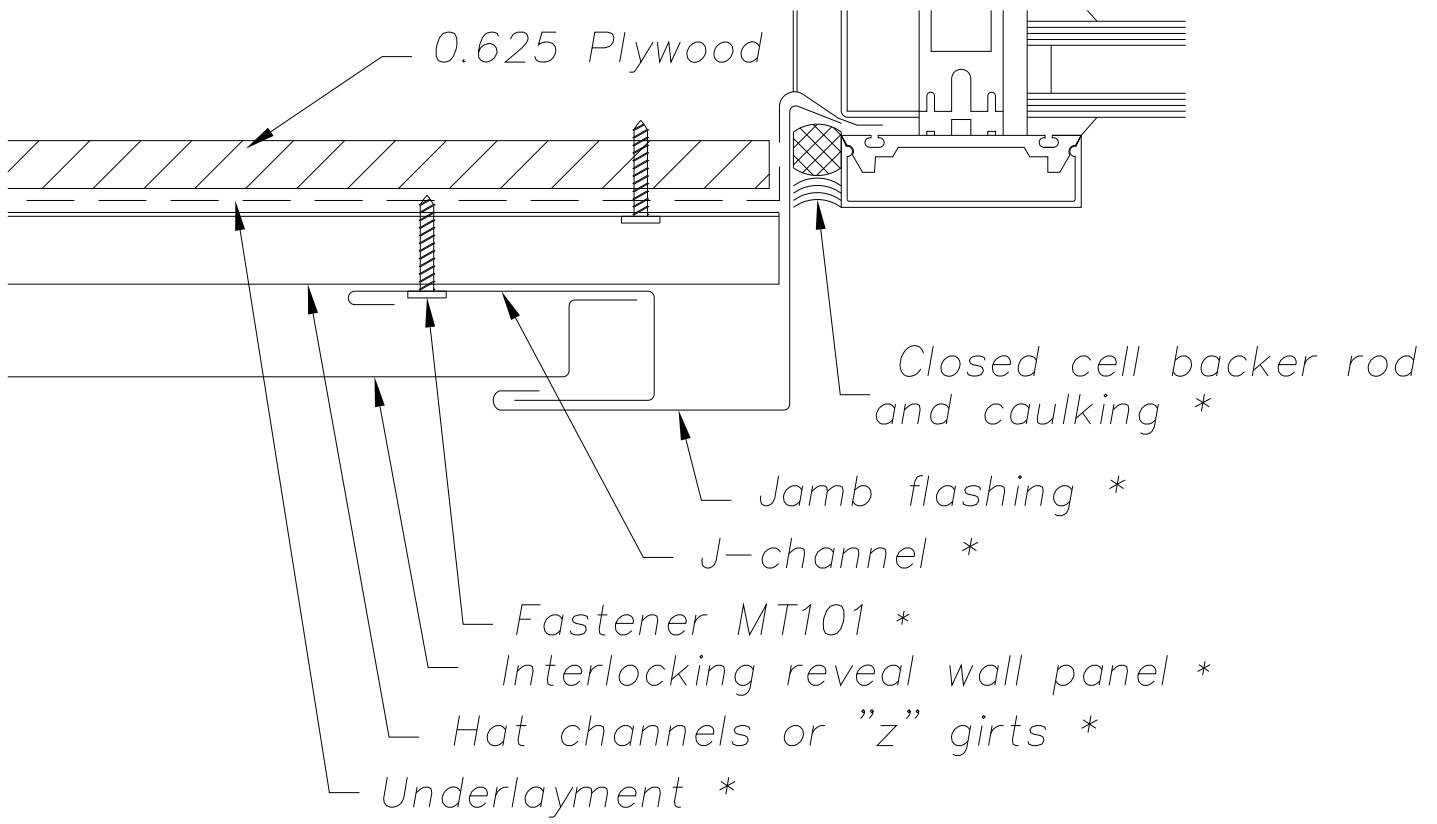
UNLESS OTHERWISE SPECIFIED DIMENSIONS ARE IN INCHES	DRAWING NAME: WALL TO SOFFIT TRANSITION		REVISION NO: A	DATED CREATED: 11/6/2014
	DWG NO: MT_IRWPV_1104		CHECKED BY: ESIMONSEN	APPROVED BY: ESIMONSEN
PROJECT NAME: TOP OF WALL DETAILS				
SCALE: NTS		SHEET NO: 4 OF 5	SIZE: A	TOLERANCES: ANGULAR ±1° LINEAR ±0.06






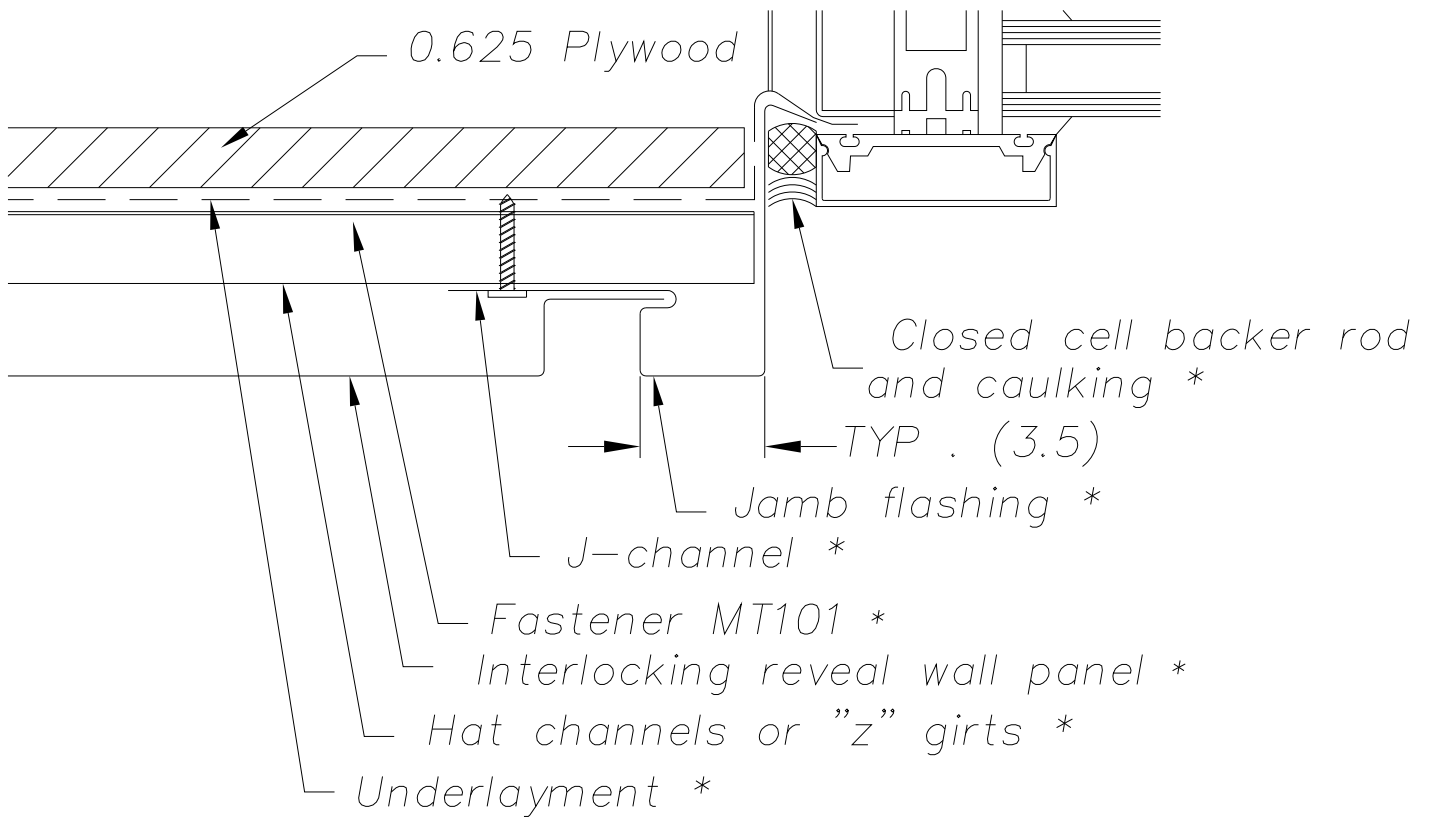
NOTE:
 Information and details are only a baseline for system and installation. Modification to meet project requirement is the responsibility of the designer, architect and contractor. MetalTech Global project staff are available to assist throughout the design and build process. © MetalTech Global. All rights reserved.

UNLESS OTHERWISE SPECIFIED DIMENSIONS ARE IN INCHES	DRAWING NAME: SOFFIT TO FASCIA DETAIL	REVISION NO: A	DATED CREATED: 11/7/2014
	DWG NO: MT_IRWPV_1105	CHECKED BY: ESIMONSEN	APPROVED BY: ESIMONSEN
	PROJECT NAME: TOP OF WALL DETAILS		
SCALE: NTS	SHEET NO: 5 OF 5	SIZE: A	TOLERANCES: ANGULAR ±1° LINEAR ±0.06




NOTE:
 Information and details are only a baseline for system and installation. Modification to meet project requirement is the responsibility of the designer, architect and contractor. MetalTech Global project staff are available to assist throughout the design and build process. © MetalTech Global. All rights reserved.

 <p>METALTECH Global <small>a Forza Group Company</small> DESIGNING STRENGTH</p>	DRAWING NAME: JAMB DETAIL – OPTION 1		REVISION NO: A	DATED CREATED: 11/6/2014
	DWG NO: MT_IRWPV_1201		CHECKED BY: ESIMONSEN	APPROVED BY: ESIMONSEN
PROJECT NAME: WINDOW DETAILS				
SCALE: NTS	SHEET NO: 1 OF 6	SIZE: A	TOLERANCES: ANGULAR ±1° LINEAR ±0.06	



NOTE:
 Information and details are only a baseline for system and installation. Modification to meet project requirement is the responsibility of the designer, architect and contractor. MetalTech Global project staff are available to assist throughout the design and build process. © MetalTech Global. All rights reserved.

UNLESS OTHERWISE SPECIFIED DIMENSIONS ARE IN INCHES	DRAWING NAME: JAMB DETAIL - OPTION 2	REVISION NO: A	DATED CREATED: 11/6/2014
	DWG NO: MT_IRWPV_1202	CHECKED BY: ESIMONSEN	APPROVED BY: ESIMONSEN
	PROJECT NAME: WINDOW DETAILS		
	SCALE: NTS	SHEET NO: 2 OF 6	SIZE: A TOLERANCES: ANGULAR ±1° LINEAR ±0.06

Interlocking reveal wall panel *

Underlayment *

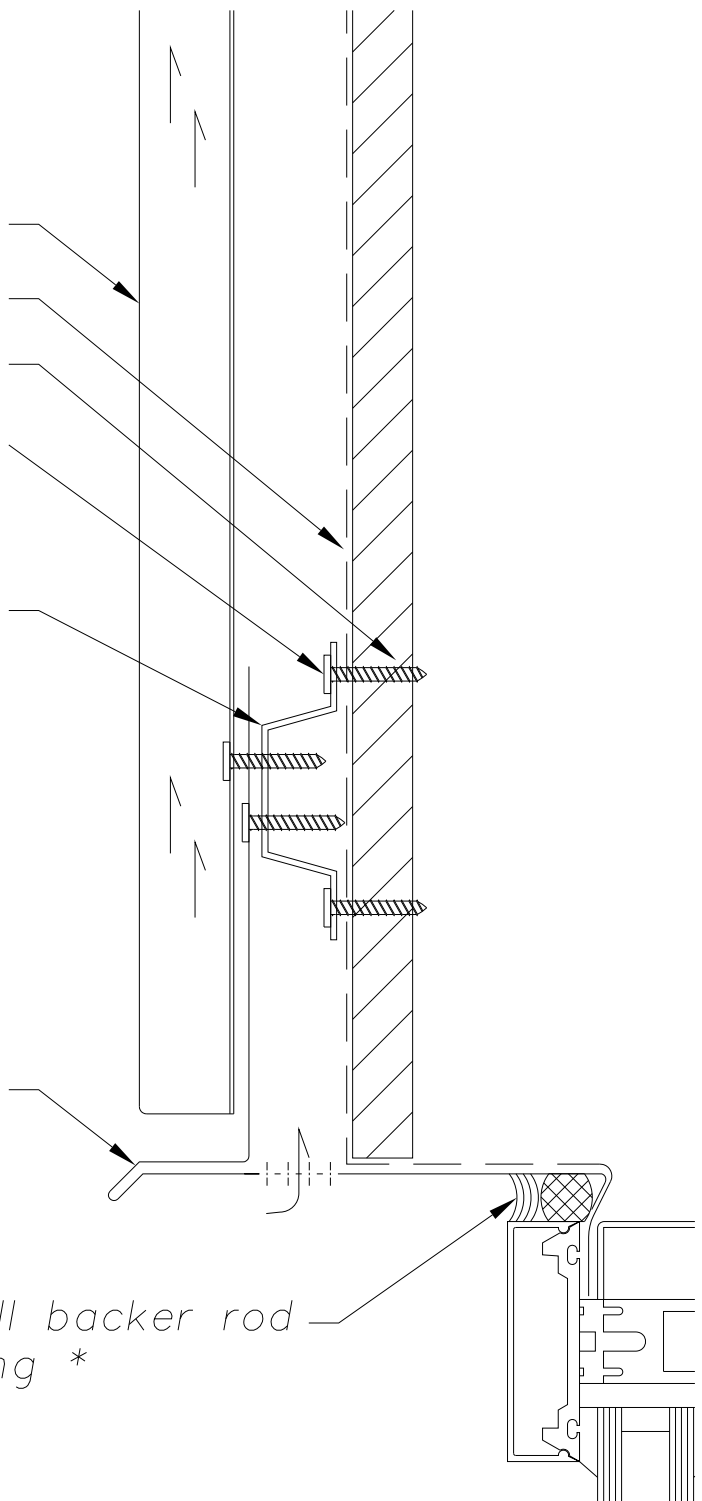
0.625 Plywood

Fastener MT101 *

Hat channels or "z" girts *

Perforated head flashing *

Closed cell backer rod and caulking *



NOTE:
 Information and details are only a baseline for system and installation. Modification to meet project requirement is the responsibility of the designer, architect and contractor. MetalTech Global project staff are available to assist throughout the design and build process. © MetalTech Global. All rights reserved.

UNLESS OTHERWISE SPECIFIED
 DIMENSIONS ARE IN INCHES

DRAWING NAME:
 HEAD DETAIL – OPTION 1

REVISION NO:
 A

DATED CREATED:
 11/6/2014

DWG NO:
 MT_IRWPV_1203

CHECKED BY:
 ESIMONSEN

APPROVED BY:
 ESIMONSEN



PROJECT NAME:
 WINDOW DETAILS

SCALE:
 NTS

SHEET NO:
 3 OF 6

SIZE:
 A

TOLERANCES:
 ANGULAR ±1° LINEAR ±0.06

Interlocking reveal wall panel *

Underlayment *

0.625 Plywood

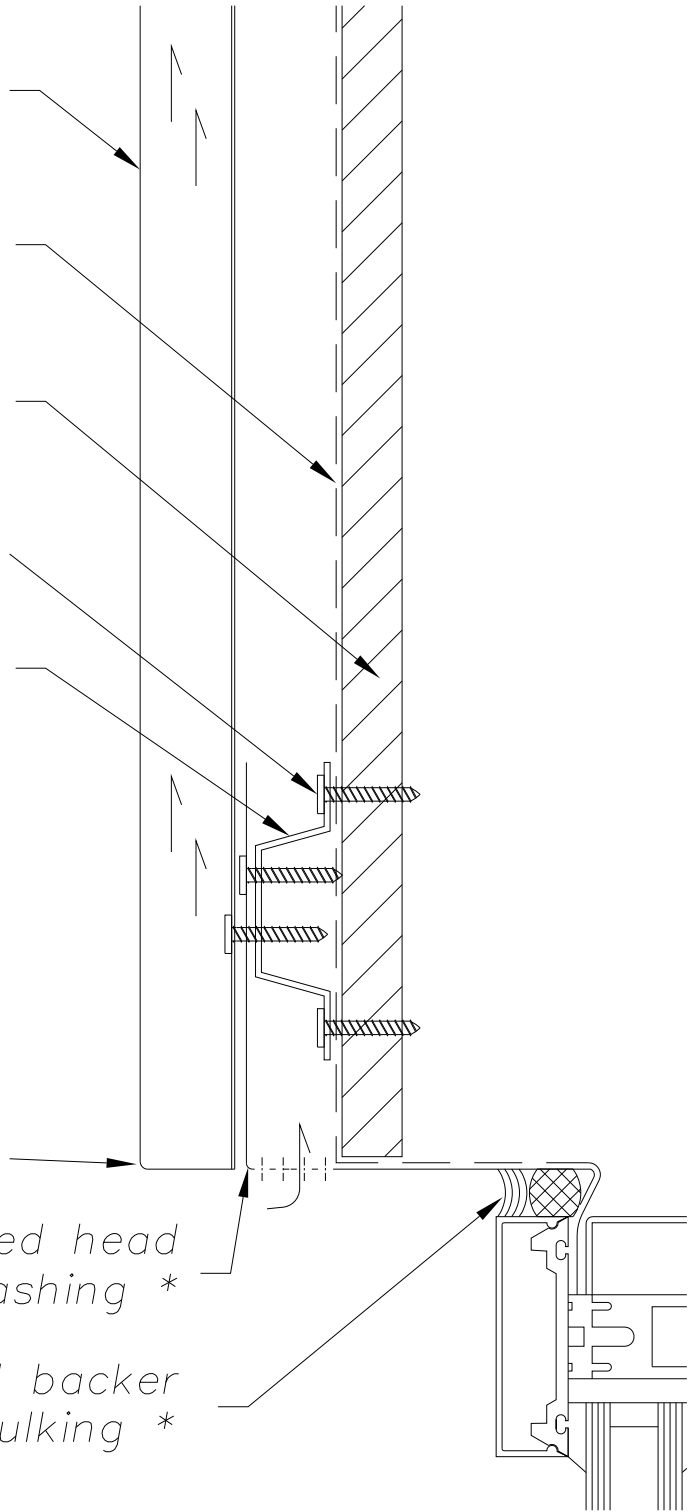
Fastener MT101 *

Hat channels or "z" girts *

End folded *

Perforated head flashing *

Closed cell backer rod and caulking *



NOTE:

Information and details are only a baseline for system and installation. Modification to meet project requirement is the responsibility of the designer, architect and contractor. MetalTech Global project staff are available to assist throughout the design and build process. © MetalTech Global. All rights reserved.

UNLESS OTHERWISE SPECIFIED DIMENSIONS ARE IN INCHES

DRAWING NAME:
HEAD DETAIL - OPTION 2

REVISION NO:
A

DATED CREATED:
11/6/2014



DWG NO:
MT_IRWPV_1204

CHECKED BY:
ESIMONSEN

APPROVED BY:
ESIMONSEN

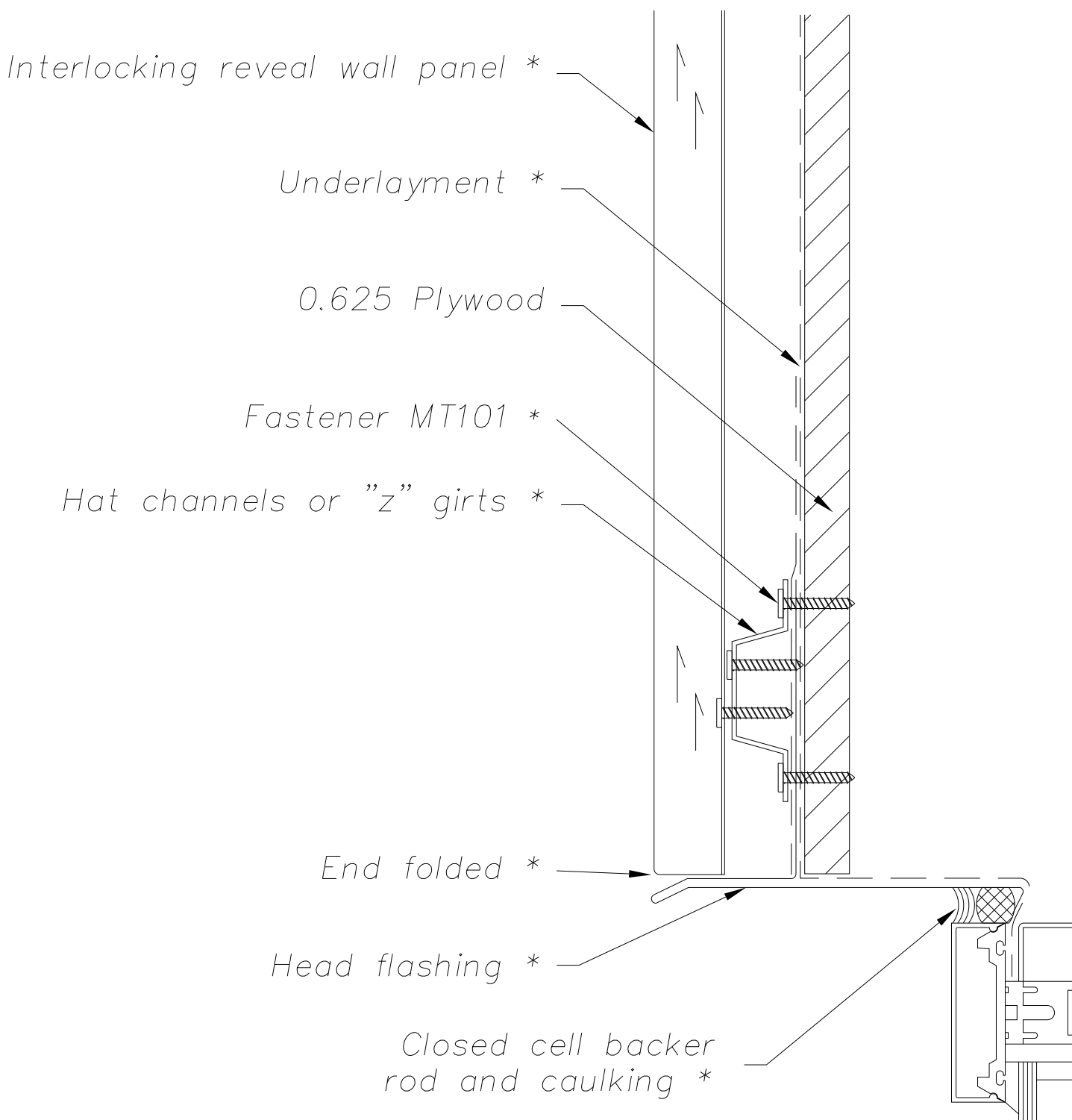
PROJECT NAME:
WINDOW DETAILS

SCALE:
NTS


SHEET NO:
4 OF 6

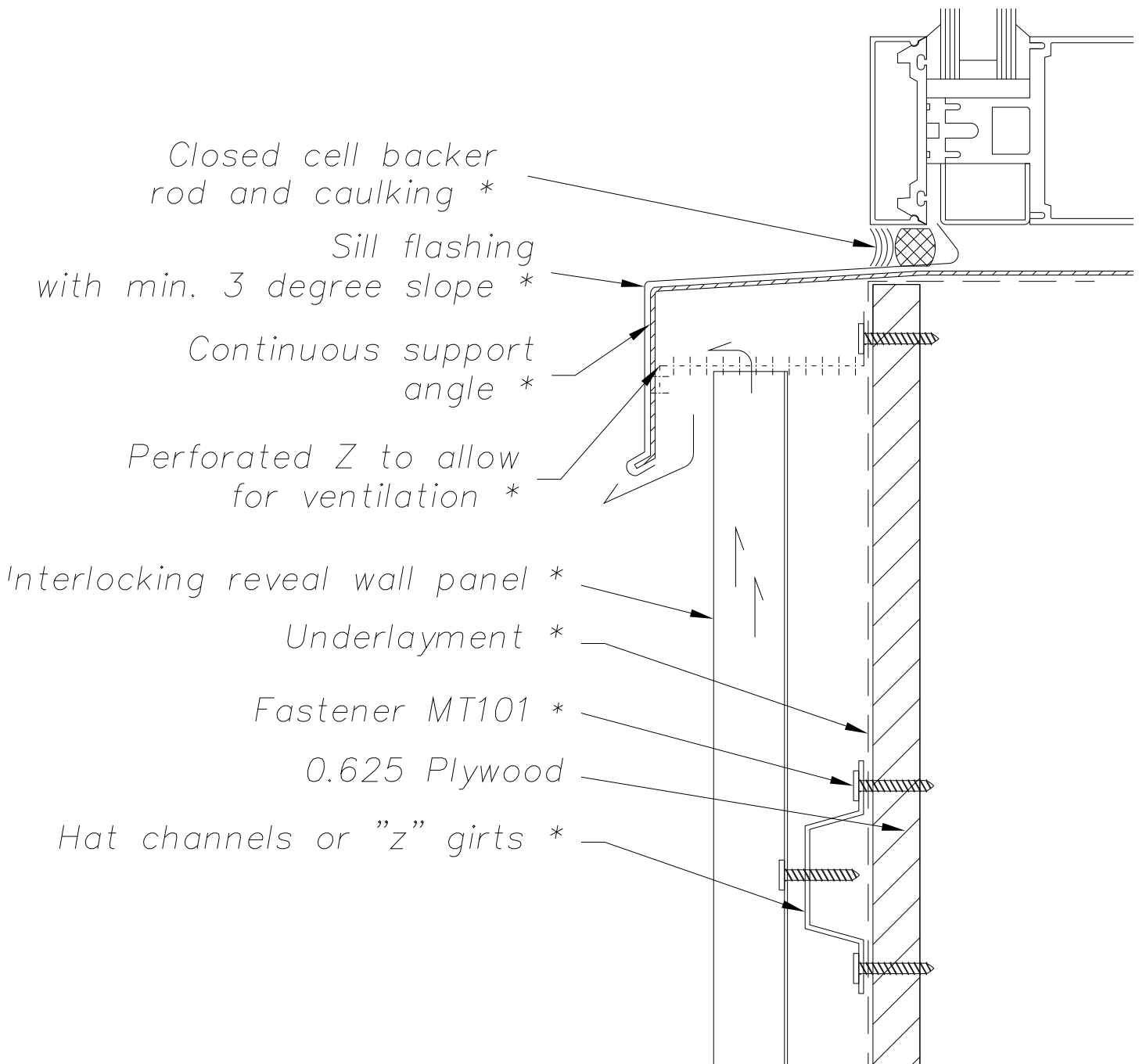
SIZE:
A

TOLERANCES:
ANGULAR ±1° LINEAR ±0.06




NOTE:
 Information and details are only a baseline for system and installation. Modification to meet project requirement is the responsibility of the designer, architect and contractor. MetalTech Global project staff are available to assist throughout the design and build process. © MetalTech Global. All rights reserved.

UNLESS OTHERWISE SPECIFIED DIMENSIONS ARE IN INCHES	DRAWING NAME: HEAD DETAIL - OPTION 3	REVISION NO: A	DATED CREATED: 11/6/2014
	DWG NO: MT_IRWPV_1205	CHECKED BY: ESIMONSEN	APPROVED BY: ESIMONSEN
	PROJECT NAME: WINDOW DETAILS		
SCALE: NTS	SHEET NO: 5 OF 6	SIZE: A	TOLERANCES: ANGULAR ±1° LINEAR ±0.06



NOTE:
 Information and details are only a baseline for system and installation. Modification to meet project requirement is the responsibility of the designer, architect and contractor. MetalTech Global project staff are available to assist throughout the design and build process. © MetalTech Global. All rights reserved.

UNLESS OTHERWISE SPECIFIED DIMENSIONS ARE IN INCHES	DRAWING NAME: SILL DETAIL - OPTION 1	REVISION NO: A	DATED CREATED: 11/6/2014
	DWG NO: MT_IRWPV_1206	CHECKED BY: ESIMONSEN	APPROVED BY: ESIMONSEN
	PROJECT NAME: WINDOW DETAILS		
SCALE: NTS	SHEET NO: 6 OF 6	SIZE: A	TOLERANCES: ANGULAR ±1' LINEAR ±0.06

*Interlocking reveal wall panel **

*Underlayment **

0.625 Plywood

*Fastener MT101 **

*Hat channels or "z" girts **

*Perforated base flashing **

NOTE:

Information and details are only a baseline for system and installation. Modification to meet project requirement is the responsibility of the designer, architect and contractor. MetalTech Global project staff are available to assist throughout the design and build process. © MetalTech Global. All rights reserved.

UNLESS OTHERWISE SPECIFIED
DIMENSIONS ARE IN INCHES

DRAWING NAME:
BASE DETAIL – OPTION 1

REVISION NO:
A

DATED CREATED:
11/7/2014



DWG NO:
MT_IRWPV_1301

CHECKED BY:
ESIMONSEN

APPROVED BY:
ESIMONSEN

PROJECT NAME:
BOTTOM OF WALL DETAILS

SCALE:
NTS

SHEET NO:
1 OF 2

SIZE:
A

TOLERANCES:
ANGULAR ±1° LINEAR ±0.06

*Interlocking reveal wall panel **

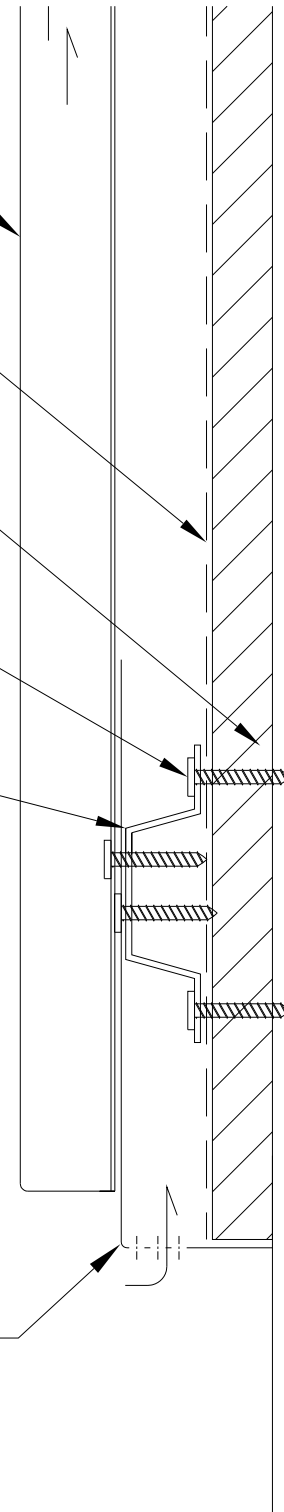
*Underlayment **

0.625 Plywood

*Fastener MT101 **

*Hat channels or "z" girts **

*Perforated base flashing **



NOTE:

Information and details are only a baseline for system and installation. Modification to meet project requirement is the responsibility of the designer, architect and contractor. MetalTech Global project staff are available to assist throughout the design and build process. © MetalTech Global. All rights reserved.

UNLESS OTHERWISE SPECIFIED
DIMENSIONS ARE IN INCHES

DRAWING NAME:
BASE DETAIL – OPTION 2

REVISION NO:
A

DATED CREATED:
11/7/2014



DWG NO:
MT_IRWPV_1302

CHECKED BY:
ESIMONSEN

APPROVED BY:
ESIMONSEN

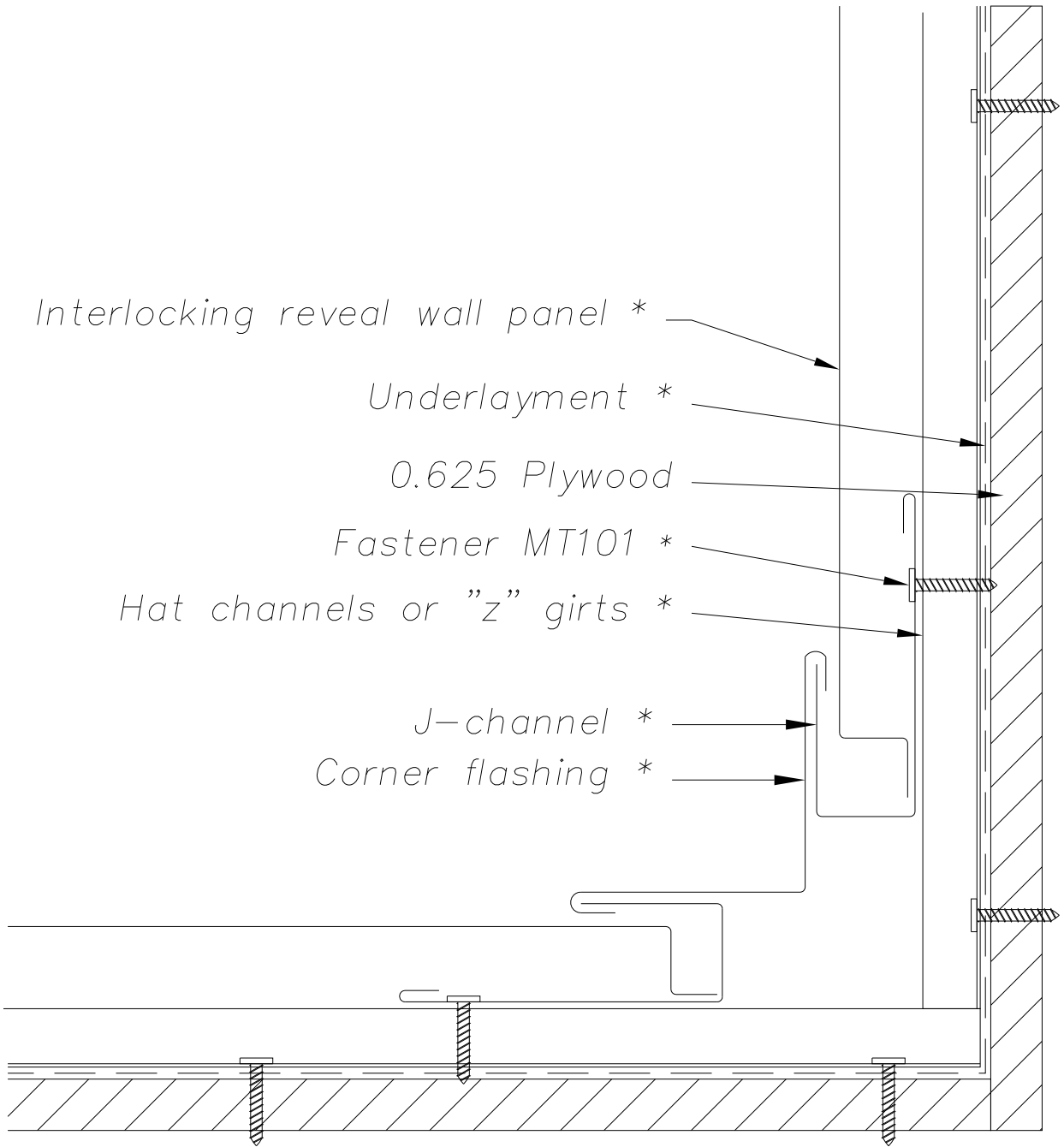
PROJECT NAME:
BOTTOM OF WALL DETAILS

SCALE:
NTS

SHEET NO:
2 OF 2

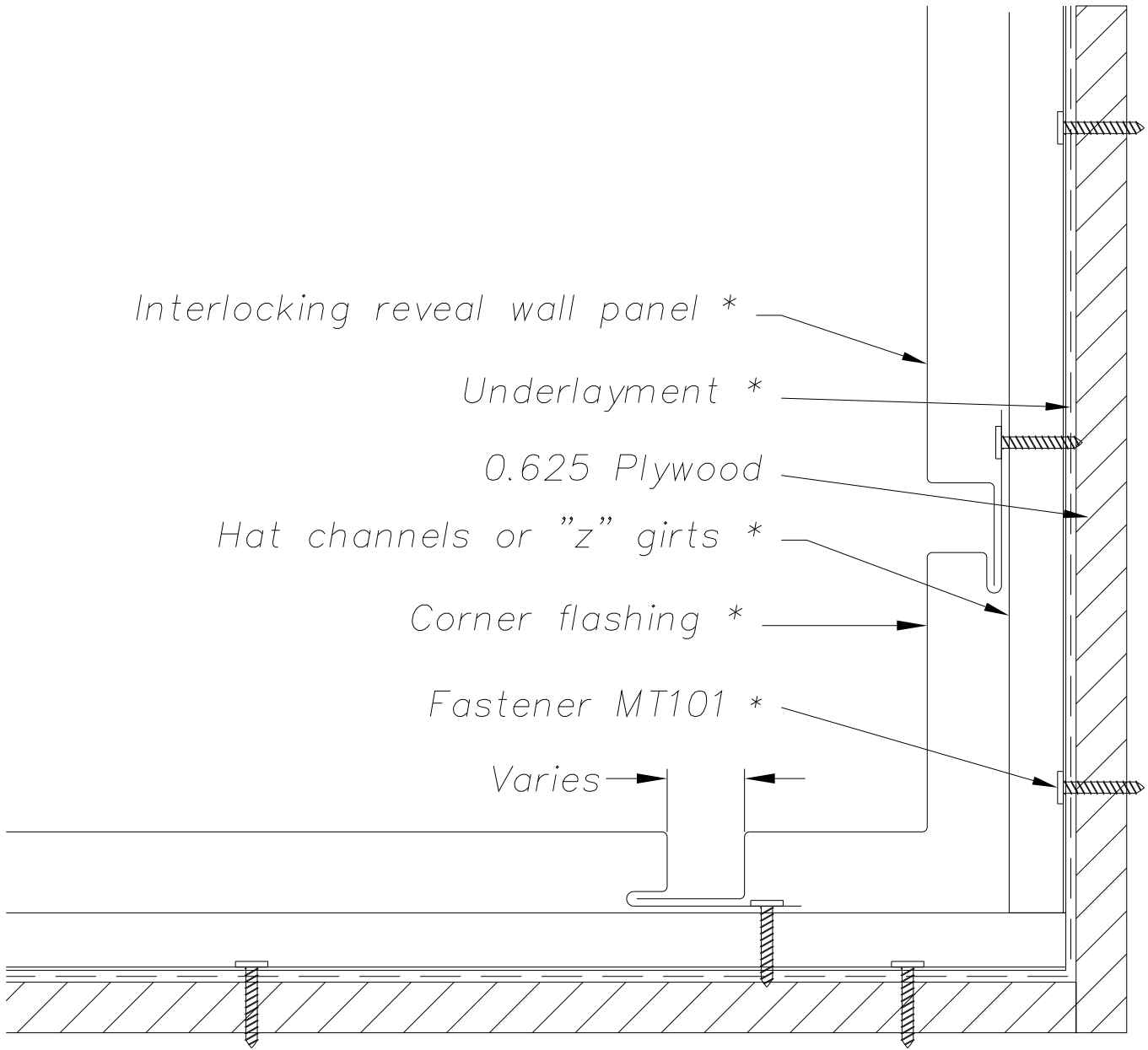
SIZE:
A

TOLERANCES:
ANGULAR $\pm 1'$ LINEAR ± 0.06




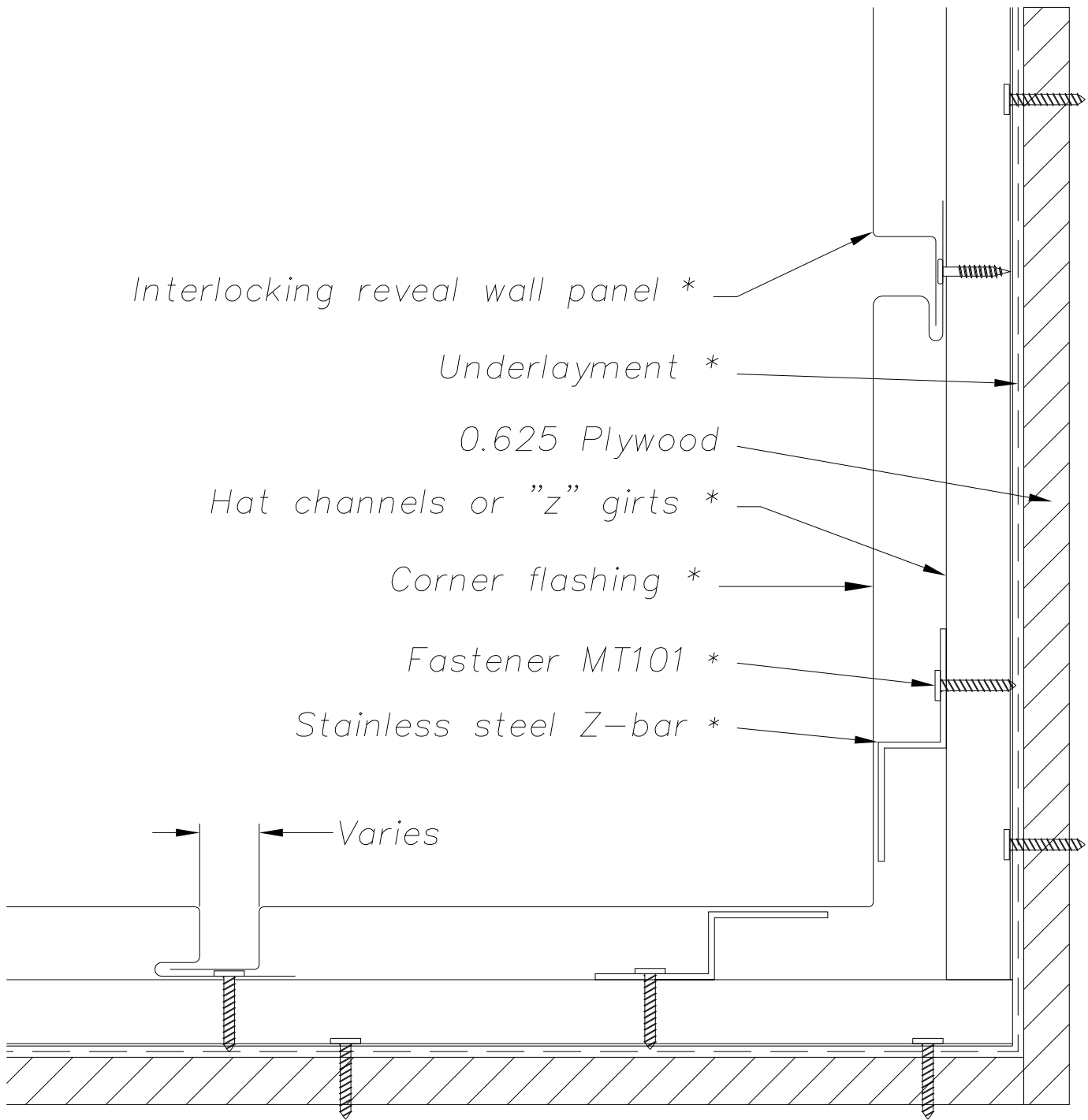
NOTE:
 Information and details are only a baseline for system and installation. Modification to meet project requirement is the responsibility of the designer, architect and contractor. MetalTech Global project staff are available to assist throughout the design and build process. © MetalTech Global. All rights reserved.

UNLESS OTHERWISE SPECIFIED DIMENSIONS ARE IN INCHES 	DRAWING NAME: INTERIOR CORNER – OPTION 1	REVISION NO: A	DATED CREATED: 11/7/2014
	DWG NO: MT_IRWPV_1401	CHECKED BY: ESIMONSEN	APPROVED BY: ESIMONSEN
PROJECT NAME: INTERIOR DETAILS			
SCALE: NTS	SHEET NO: 1 OF 3	SIZE: A	TOLERANCES: ANGULAR ±1° LINEAR ±0.06



NOTE:
 Information and details are only a baseline for system and installation. Modification to meet project requirement is the responsibility of the designer, architect and contractor. MetalTech Global project staff are available to assist throughout the design and build process. © MetalTech Global. All rights reserved.

	DRAWING NAME: INTERIOR CORNER – OPTION 2		REVISION NO: A	DATED CREATED: 11/7/2014
	DWG NO: MT_IRWPV_1402		CHECKED BY: ESIMONSEN	APPROVED BY: ESIMONSEN
PROJECT NAME: INTERIOR DETAILS				
SCALE: NTS	SHEET NO: 2 OF 3	SIZE: A	TOLERANCES: ANGULAR ±1° LINEAR ±0.06	



NOTE: Availability of this flashing is based on size required.

NOTE: Information and details are only a baseline for system and installation. Modification to meet project requirement is the responsibility of the designer, architect and contractor. MetalTech Global project staff are available to assist throughout the design and build process. © MetalTech Global. All rights reserved.

UNLESS OTHERWISE SPECIFIED
DIMENSIONS ARE IN INCHES

DRAWING NAME:
INTERIOR CORNER – OPTION 3

REVISION NO:
A

DATED CREATED:
11/7/2014



DWG NO:
MT_IRWPV_1403

CHECKED BY:
ESIMONSEN

APPROVED BY:
ESIMONSEN

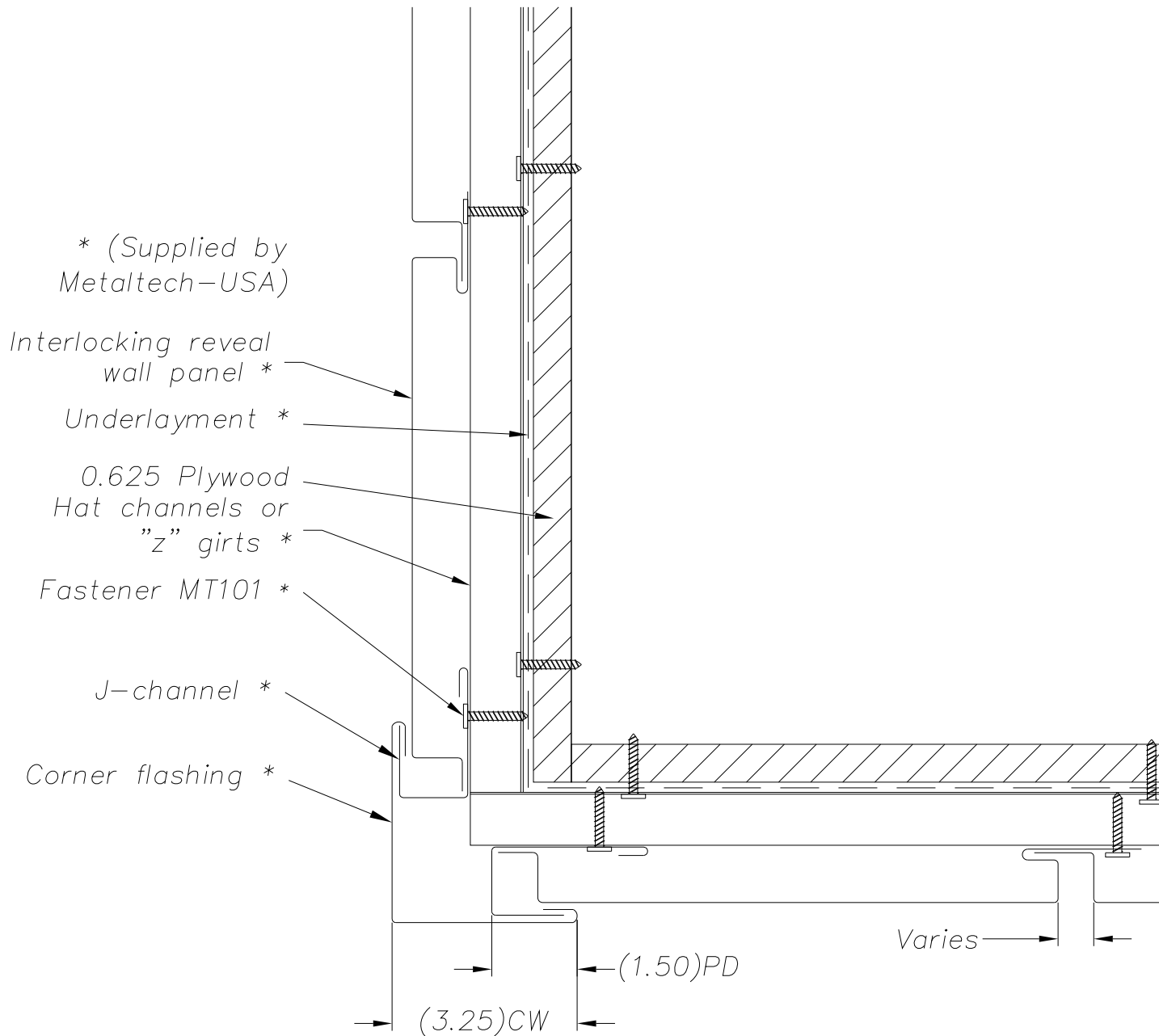
PROJECT NAME:
INTERIOR DETAILS

SCALE:
NTS

SHEET NO:
3 OF 3


SIZE:
A

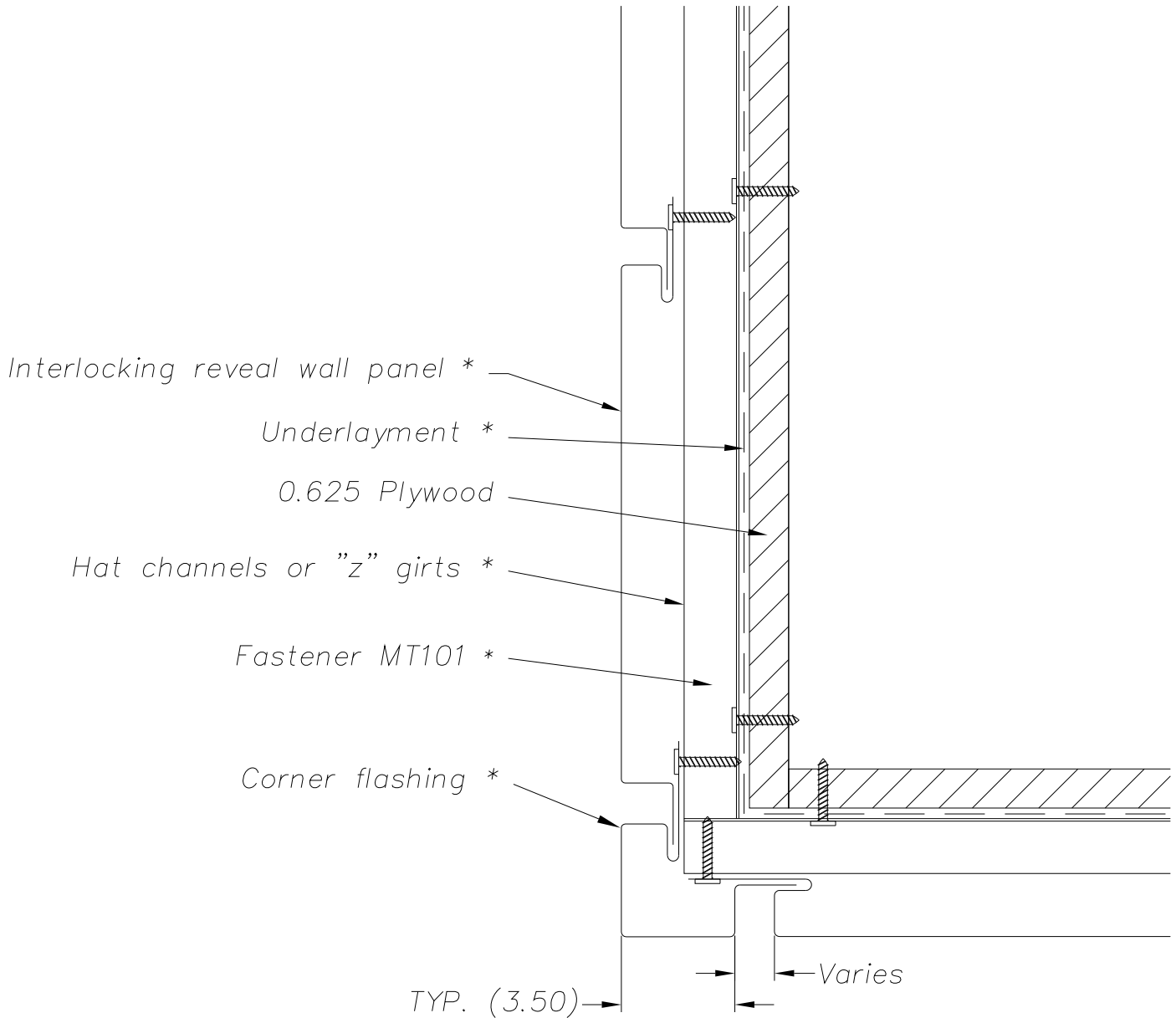
TOLERANCES:
ANGULAR ±1° LINEAR ±0.06




NOTE: Minimum difference between exposed corner width (CW) and pocket depth (PD) equal 1 3/4"

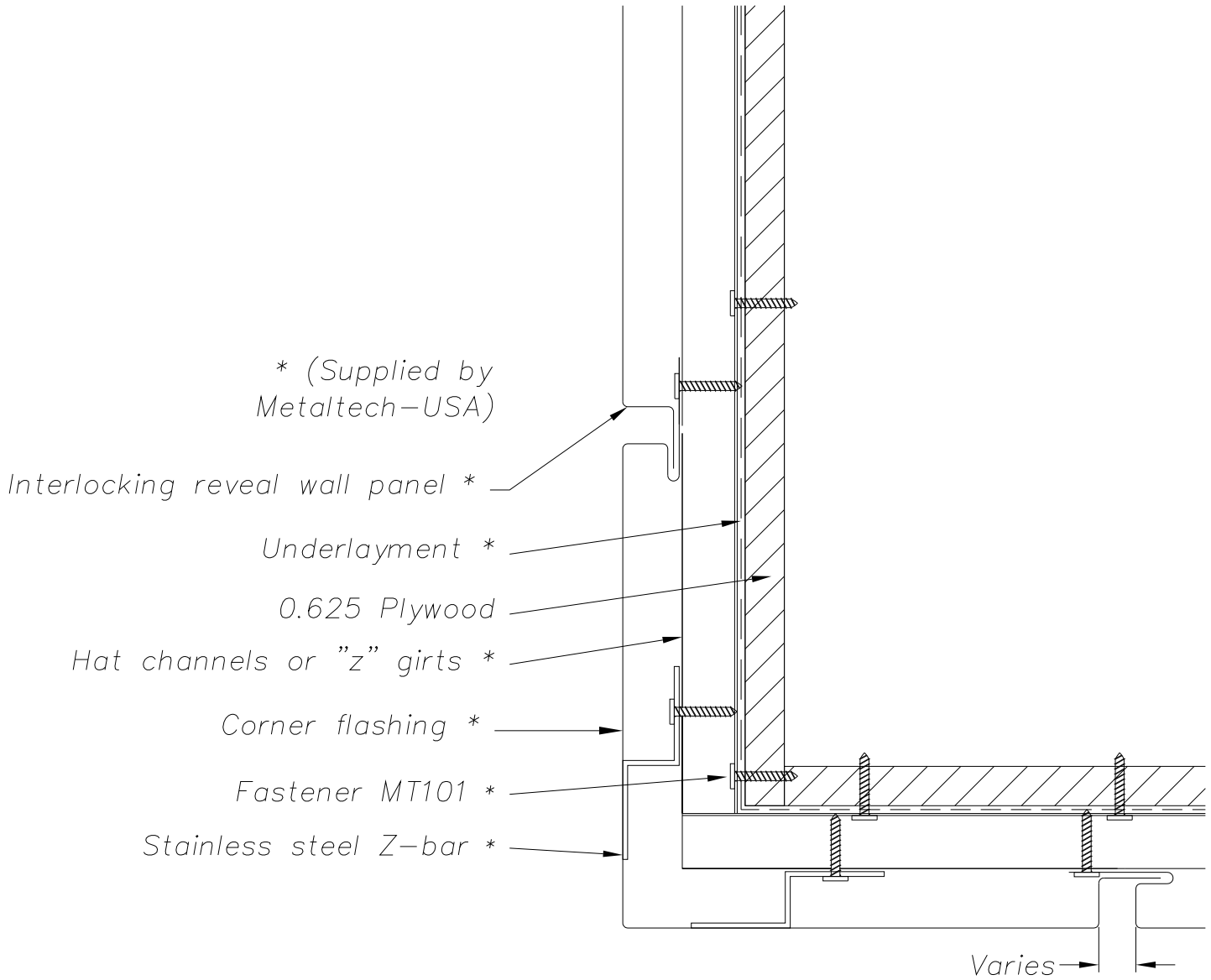
NOTE: Information and details are only a baseline for system and installation. Modification to meet project requirement is the responsibility of the designer, architect and contractor. MetalTech Global project staff are available to assist throughout the design and build process. © MetalTech Global. All rights reserved.

 <p>METALTECH Global a Forza Group Company DESIGNING STRENGTH</p>	DRAWING NAME: EXTERIOR CORNER - OPTION 1		REVISION NO: A	DATED CREATED: 11/7/2014
	DWG NO: MT_IRWPV_1501		CHECKED BY: ESIMONSEN	APPROVED BY: ESIMONSEN
PROJECT NAME: EXTERIOR DETAILS				
SCALE: NTS	SHEET NO: 1 OF 3	SIZE: A	TOLERANCES: ANGULAR ±1° LINEAR ±0.06	



NOTE:
 Information and details are only a baseline for system and installation. Modification to meet project requirement is the responsibility of the designer, architect and contractor. MetalTech Global project staff are available to assist throughout the design and build process. © MetalTech Global. All rights reserved.

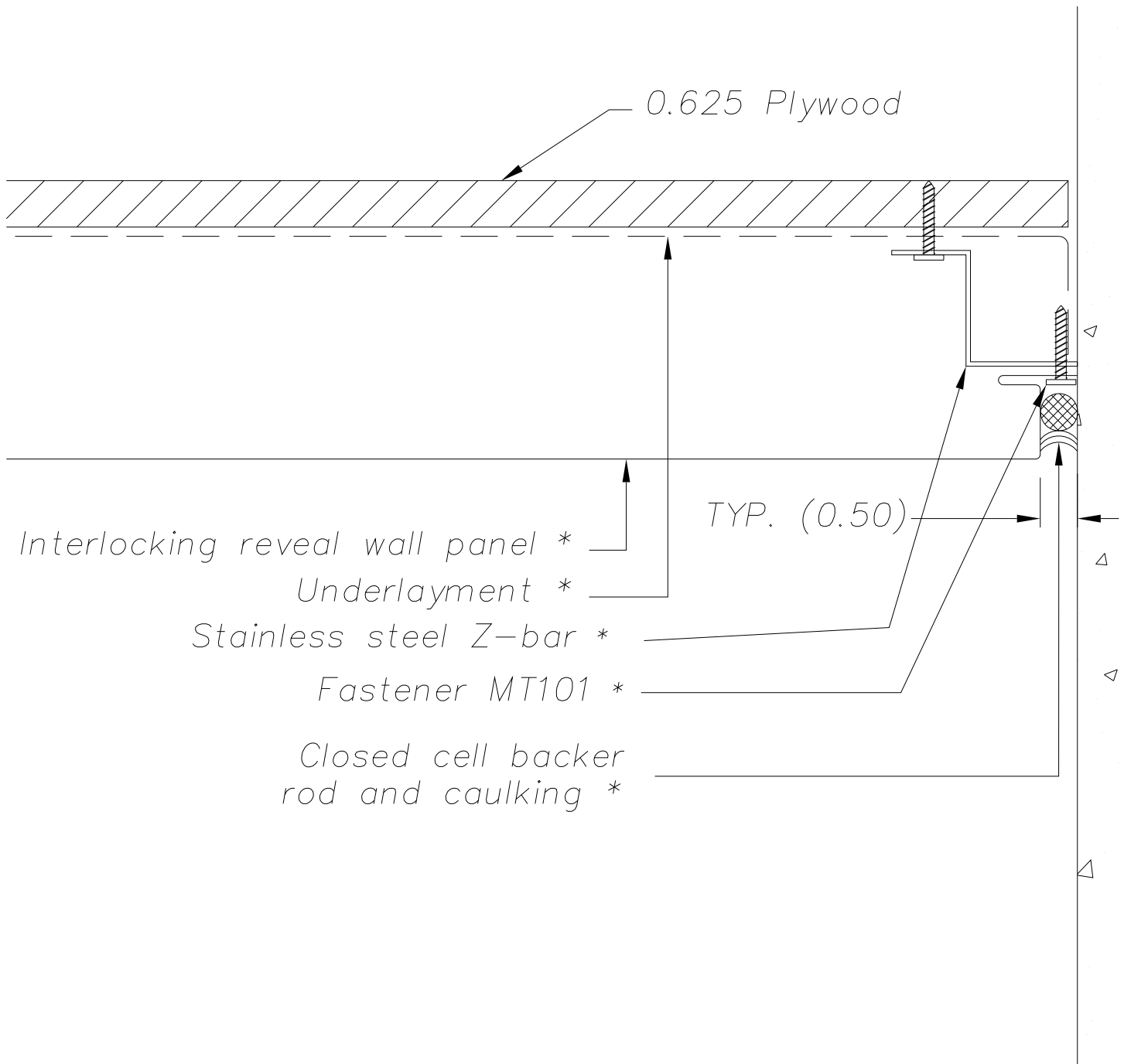
UNLESS OTHERWISE SPECIFIED DIMENSIONS ARE IN INCHES	DRAWING NAME: EXTERIOR CORNER - OPTION 2	REVISION NO: A	DATED CREATED: 11/7/2014
	DWG NO: MT_IRWPV_1502	CHECKED BY: ESIMONSEN	APPROVED BY: ESIMONSEN
	PROJECT NAME: EXTERIOR DETAILS		
SCALE: NTS	SHEET NO: 2 OF 3	SIZE: A	TOLERANCES: ANGULAR ±1° LINEAR ±0.06




NOTE: Availability of this flashing is based on size required.

NOTE:
 Information and details are only a baseline for system and installation. Modification to meet project requirement is the responsibility of the designer, architect and contractor. MetalTech Global project staff are available to assist throughout the design and build process. © MetalTech Global. All rights reserved.

UNLESS OTHERWISE SPECIFIED DIMENSIONS ARE IN INCHES	DRAWING NAME: EXTERIOR CORNER - OPTION 3		REVISION NO: A	DATED CREATED: 11/7/2014	
	DWG NO: MT_IRWPV_1503		CHECKED BY: ESIMONSEN	APPROVED BY: ESIMONSEN	
	PROJECT NAME: EXTERIOR DETAILS				
	SCALE: NTS	SHEET NO: 3 OF 3	SIZE: A	TOLERANCES: ANGULAR ±1° LINEAR ±0.06	



NOTE:
 Information and details are only a baseline for system and installation. Modification to meet project requirement is the responsibility of the designer, architect and contractor. MetalTech Global project staff are available to assist throughout the design and build process. © MetalTech Global. All rights reserved.

	UNLESS OTHERWISE SPECIFIED DIMENSIONS ARE IN INCHES		DRAWING NAME: END OF WALL DETAIL	REVISION NO: A	DATED CREATED: 11/7/2014
			DWG NO: MT_IRWPV_1601	CHECKED BY: ESIMONSEN	APPROVED BY: ESIMONSEN
	PROJECT NAME: EXTERIOR DETAILS				
	SCALE: NTS	SHEET NO: 1 OF 1	SIZE: A	TOLERANCES: ANGULAR $\pm 1'$ LINEAR ± 0.06	