

# Interlocking Reveal Panel System

## INDEX OF DRAWINGS

### GENERAL DETAILS

- MT\_IRWPH\_1001 – Interlocking Reveal Panel (Horizontal)
- MT\_IRWPH\_1002 – Interlocking Reveal Panel (Isometric)
- MT\_IRWPH\_1003 – Reveal Detail – Option 1
- MT\_IRWPH\_1004 – Reveal Detail – Option 2
- MT\_IRWPH\_1005 – Reveal Detail – Option 3
- MT\_IRWPH\_1006 – Reveal Detail – Option 4
- MT\_IRWPH\_1007 – Reveal Options (Isometric)

### TOP OF WALL DETAILS

- MT\_IRWPH\_1101 – Parapet Detail – Option 1
- MT\_IRWPH\_1102 – Parapet Detail – Option 2
- MT\_IRWPH\_1103 – Parapet Detail – Option 3
- MT\_IRWPH\_1104 – Wall To Soffit Transition
- MT\_IRWPH\_1105 – Soffit To Fascia Transition

### WINDOW DETAILS

- MT\_IRWPH\_1201 – Sill Detail – Option 1
- MT\_IRWPH\_1202 – Sill Detail – Option 2
- MT\_IRWPH\_1203 – Sill Detail – Option 3
- MT\_IRWPH\_1204 – Jamb Detail – Option 1
- MT\_IRWPH\_1205 – Jamb Detail – Option 2
- MT\_IRWPH\_1206 – Jamb Detail – Option 3
- MT\_IRWPH\_1207 – Head Detail – Option 1
- MT\_IRWPH\_1208 – Head Detail – Option 2
- MT\_IRWPH\_1209 – Head Detail – Option 3
- MT\_IRWPH\_1210 – Head Detail – Option 4

### BOTTOM OF WALL DETAILS

- MT\_IRWPH\_1301 – Base Detail – Option 1
- MT\_IRWPH\_1302 – Base Detail – Option 2

### INTERIOR DETAILS

- MT\_IRWPH\_1401 – Interior Corner – Option 1
- MT\_IRWPH\_1402 – Interior Corner – Option 2
- MT\_IRWPH\_1403 – Interior Corner – Option 3


### EXTERIOR DETAILS

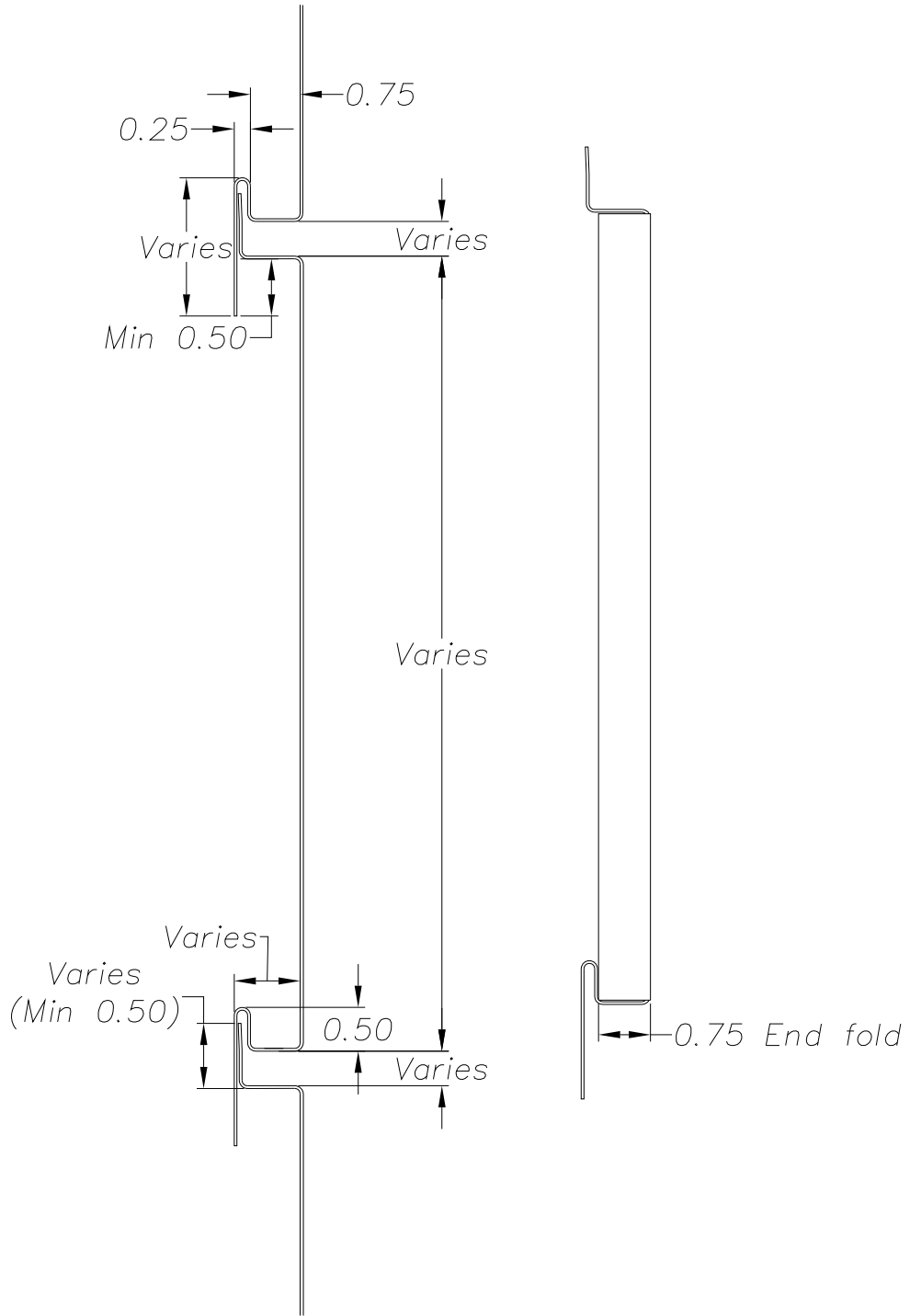
- MT\_IRWPH\_1501 – Exterior Corner – Option 1
- MT\_IRWPH\_1502 – Exterior Corner – Option 2
- MT\_IRWPH\_1503 – Exterior Corner – Option 3
- MT\_IRWPH\_1504 – Exterior Corner – Option 4

### END OF WALL DETAILS

- MT\_IRWPH\_1601 – End Of Wall Detail


**NOTE:**  
 Information and details are only a baseline for system and installation. Modification to meet project requirement is the responsibility of the designer, architect and contractor.  
 MetalTech Global project staff are available to assist throughout the design and build process. © MetalTech Global. All rights reserved.

	DRAWING NAME: INDEX		REVISION NO: A	DATED CREATED: 10/15/14
	DWG NO: MT_IRWPH_0000		CHECKED BY: ESIMONSEN	APPROVED BY: ESIMONSEN
PROJECT NAME: INDEX				
SCALE: SCALE	SHEET NO: 1 OF 1	SIZE: A	TOLERANCES: ANGULAR ±1° LINEAR ±0.06	



**NOTE:**

Information and details are only a baseline for system and installation. Modification to meet project requirement is the responsibility of the designer, architect and contractor. MetalTech Global project staff are available to assist throughout the design and build process. © MetalTech Global. All rights reserved.

	DRAWING NAME: <i>INTERLOCKING REVEAL PANEL (HORIZONTAL)</i>		REVISION NO: A	DATED CREATED: 10/22/2014
	DWG NO: MT_IRWPH_1001		CHECKED BY: ESIMONSEN	APPROVED BY: ESIMONSEN
	PROJECT NAME: GENERAL DETAILS			
	SCALE: NTS	SHEET NO: 1 OF 9	SIZE: A	TOLERANCES: ANGULAR $\pm 1^\circ$ LINEAR $\pm 0.06$




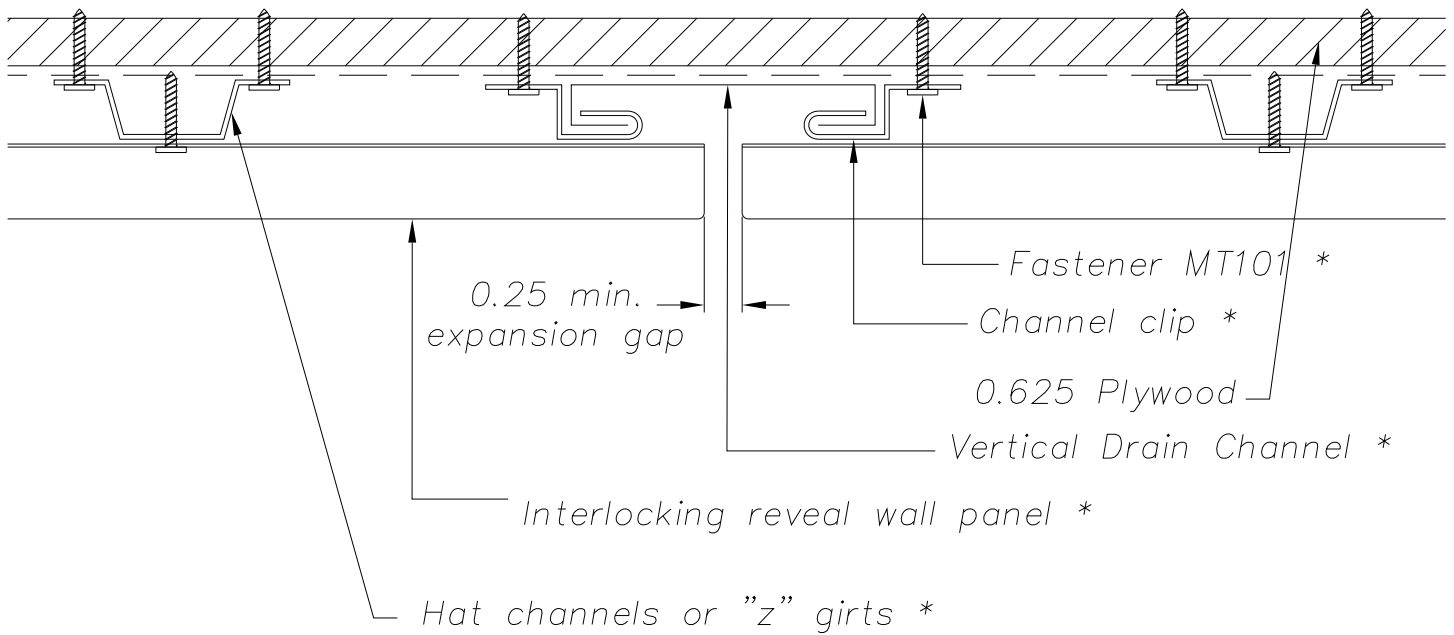
*Fastener Spacing:*

*Stainless steel fasteners @ 12" O.C. Slotted fastener points at 12" O.C. as needed per panel. Slotted fastener points allow for expansion and contraction. Panels 8'-0" or less do not require slotted fastener holes.*

**NOTE:**


Information and details are only a baseline for system and installation. Modification to meet project requirement is the responsibility of the designer, architect and contractor. MetalTech Global project staff are available to assist throughout the design and build process. © MetalTech Global. All rights reserved.

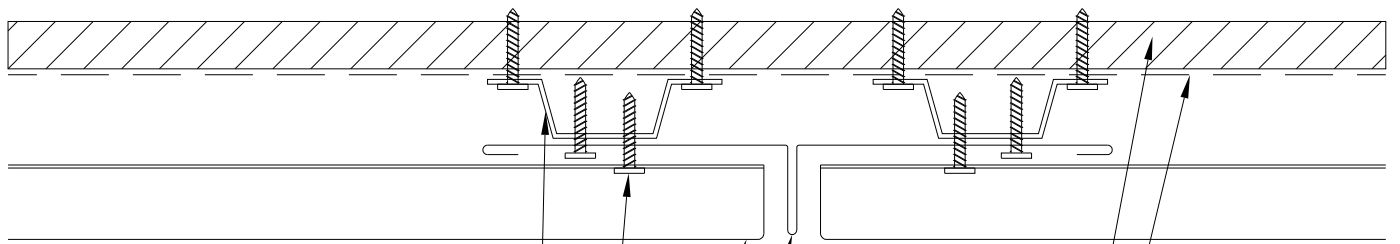
	UNLESS OTHERWISE SPECIFIED DIMENSIONS ARE IN INCHES		DRAWING NAME: INTERLOCKING REVEAL PANEL (ISOMETRIC)	REVISION NO: A	DATED CREATED: 10/22/2014
			DWG NO: MT_IRWPH_1002	CHECKED BY: ESIMONSEN	APPROVED BY: ESIMONSEN
	PROJECT NAME: GENERAL DETAILS				
	SCALE: NTS	SHEET NO: 2 OF 9	SIZE: A	TOLERANCES: ANGULAR ±1° LINEAR ±0.06	



\* (Supplied by  
Metaltech-USA if  
requested)

**NOTE:**  
Information and details are only a baseline for system and installation. Modification to meet project requirement is the responsibility of the designer, architect and contractor.  
MetalTech Global project staff are available to assist throughout the design and build process. © MetalTech Global. All rights reserved.

	DRAWING NAME: REVEAL DETAIL - OPTION 1		REVISION NO: A	DATED CREATED: 10/22/2014
	DWG NO: MT_IRWPH_1003		CHECKED BY: ESIMONSEN	APPROVED BY: ESIMONSEN
PROJECT NAME: GENERAL DETAILS				
SCALE: NTS	SHEET NO: 3 OF 9	SIZE: A	TOLERANCES: ANGULAR ±1° LINEAR ±0.06	



Hat channels or "z" girts \*

Fastener MT101 \*

Interlocking reveal wall panel \*

Cross joint flashing \*


0.625 Plywood

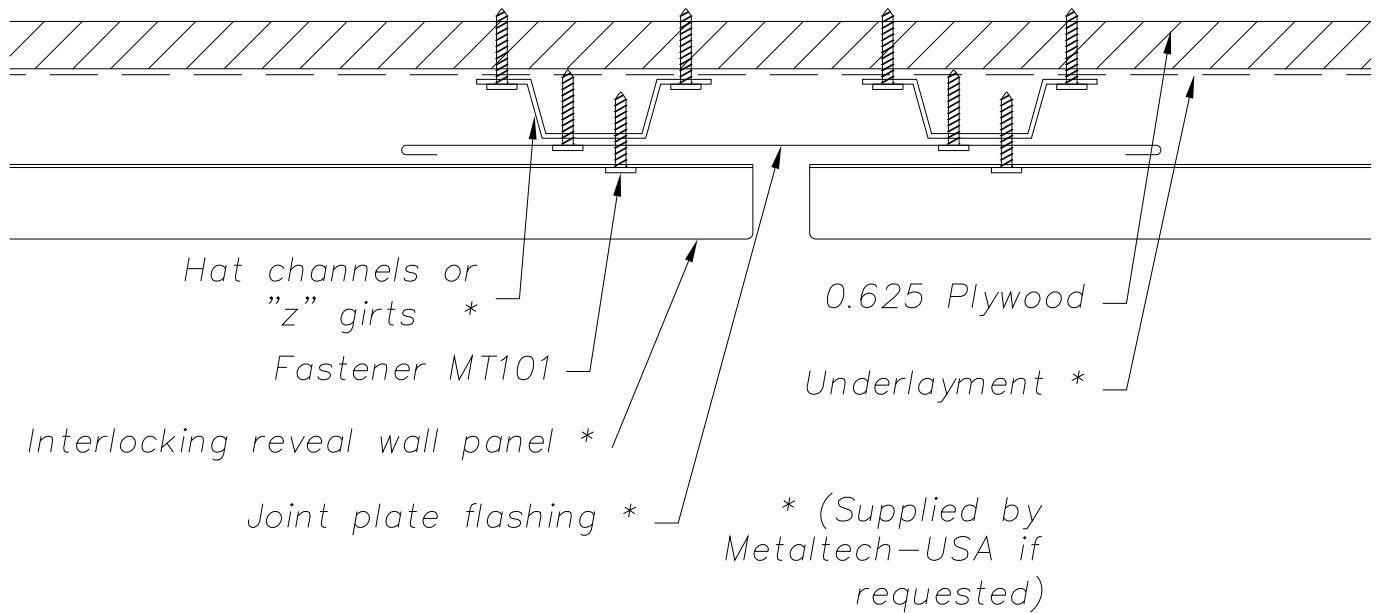
Underlayment \*

\* (Supplied by Metaltech-USA if requested)

**NOTE:**


Information and details are only a baseline for system and installation. Modification to meet project requirement is the responsibility of the designer, architect and contractor. MetalTech Global project staff are available to assist throughout the design and build process. © MetalTech Global. All rights reserved.

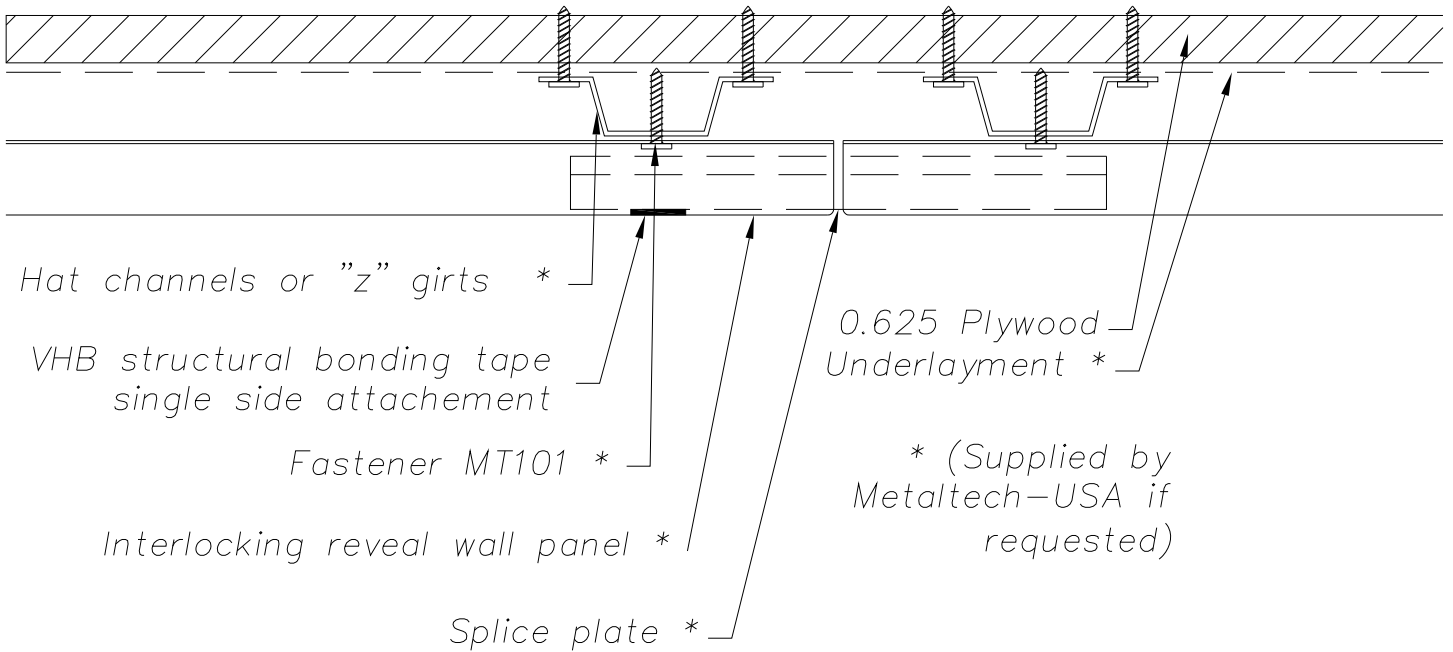
	DRAWING NAME: REVEAL DETAIL - OPTION 2		REVISION NO: A	DATED CREATED: 10/22/2014
	DWG NO: MT_IRWPH_1004		CHECKED BY: ESIMONSEN	APPROVED BY: ESIMONSEN
	PROJECT NAME: GENERAL DETAILS			
	SCALE: NTS	SHEET NO: 4 OF 9	SIZE: A	TOLERANCES: ANGULAR ±1° LINEAR ±0.06



**NOTE:**

Information and details are only a baseline for system and installation. Modification to meet project requirement is the responsibility of the designer, architect and contractor. MetalTech Global project staff are available to assist throughout the design and build process. © MetalTech Global. All rights reserved.

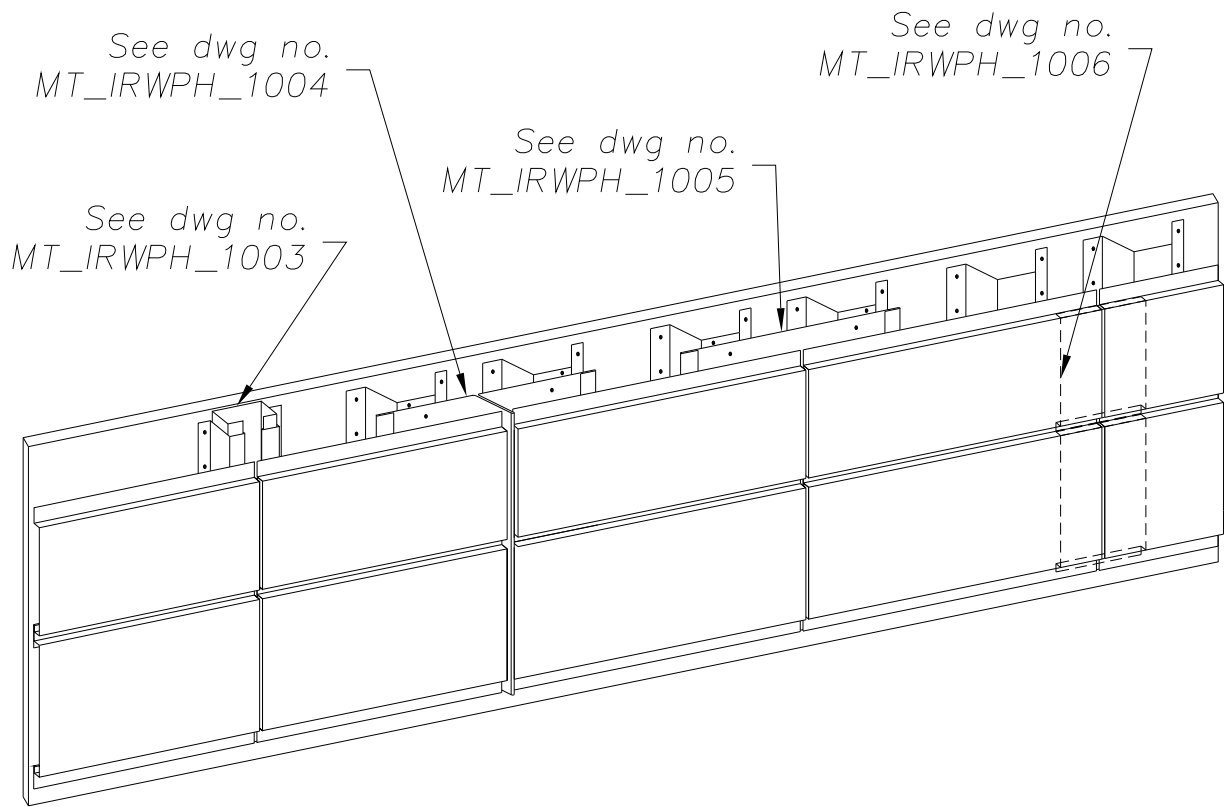
	DRAWING NAME: REVEAL DETAIL - OPTION 3		REVISION NO: A	DATED CREATED: 10/22/2014
	DWG NO: MT_IRWPH_1005		CHECKED BY: ESIMONSEN	APPROVED BY: ESIMONSEN
	PROJECT NAME: GENERAL DETAILS			
	SCALE: NTS	SHEET NO: 5 OF 9	SIZE: A	TOLERANCES: ANGULAR ±1° LINEAR ±0.06



**NOTE:**


Information and details are only a baseline for system and installation. Modification to meet project requirement is the responsibility of the designer, architect and contractor. MetalTech Global project staff are available to assist throughout the design and build process. © MetalTech Global. All rights reserved.

	UNLESS OTHERWISE SPECIFIED DIMENSIONS ARE IN INCHES		DRAWING NAME: REVEAL DETAIL – OPTION 4	REVISION NO: A	DATED CREATED: 10/22/2014
			DWG NO: MT_IRWPH_1006	CHECKED BY: ESIMONSEN	APPROVED BY: ESIMONSEN
	PROJECT NAME: GENERAL DETAILS				
	SCALE: NTS	SHEET NO: 6 OF 9	SIZE: A	TOLERANCES: ANGULAR ±1° LINEAR ±0.06	

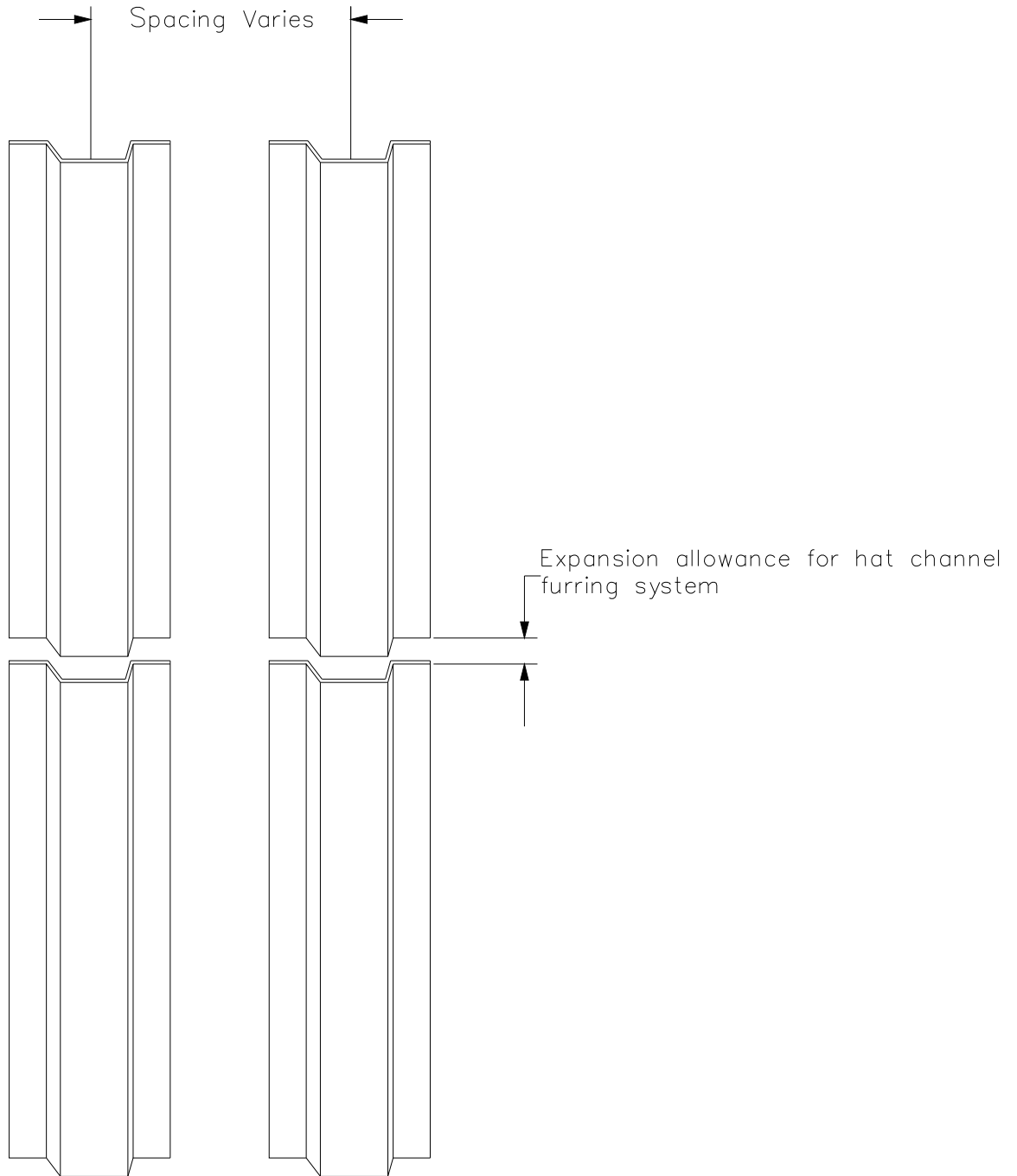


**NOTE:**

Information and details are only a baseline for system and installation. Modification to meet project requirement is the responsibility of the designer, architect and contractor. MetalTech Global project staff are available to assist throughout the design and build process. © MetalTech Global. All rights reserved.

UNLESS OTHERWISE SPECIFIED DIMENSIONS ARE IN INCHES	DRAWING NAME: REVEAL OPTIONS (ISOMETRIC)	REVISION NO: A	DATED CREATED: 10/22/2014
	DWG NO: MT_IRWPH_1007	CHECKED BY: ESIMONSEN	APPROVED BY: ESIMONSEN
	PROJECT NAME: GENERAL DETAILS		
SCALE: NTS	SHEET NO: 7 OF 9	SIZE: A	TOLERANCES: ANGULAR ±1° LINEAR ±0.06






*NOTE: Spacing based on material and hat channel lengths. Depending on continuous gross square footage of wall panel, consideration for expansion and contraction should also be given for attached panels, substrate, and single skin.*

**NOTE:**

**Information and details are only a baseline for system and installation. Modification to meet project requirement is the responsibility of the designer, architect and contractor.**

**MetalTech Global project staff are available to assist throughout the design and build process. © MetalTech Global. All rights reserved.**

	UNLESS OTHERWISE SPECIFIED DIMENSIONS ARE IN INCHES		DRAWING NAME: HAT CHANNEL SPACING	REVISION NO: A	DATED CREATED: 11/14/2014
	DWG NO: MT_IRWPH_1008		PROJECT NAME: GENERAL DETAILS	CHECKED BY: ESIMONSEN	APPROVED BY: ESIMONSEN
SCALE: NTS	SHEET NO: 8 OF 9	SIZE: A	TOLERANCES: ANGULAR ±1° LINEAR ±0.06		




MT101  
Wood Applications



MT101SX3  
Sheet Metal Applications

**NOTE:**

Information and details are only a baseline for system and installation. Modification to meet project requirement is the responsibility of the designer, architect and contractor. MetalTech Global project staff are available to assist throughout the design and build process. © MetalTech Global. All rights reserved.

UNLESS OTHERWISE SPECIFIED DIMENSIONS ARE IN INCHES	DRAWING NAME: FASTENERS		REVISION NO: A	DATED CREATED: 11/14/2014
	DWG NO: MT_IRWPH_1009		CHECKED BY: ESIMONSEN	APPROVED BY: ESIMONSEN
	PROJECT NAME: GENERAL DETAILS			
	SCALE: NTS	SHEET NO: 9 OF 9	SIZE: A	TOLERANCES: ANGULAR ±1° LINEAR ±0.06

Parapet cap w/proroofting  
and 3 degree min. slope \*

Enkamat\*

Continuous support angle\*

Adequate ventilation \*  
as determined

Fastener MT101 \*

Hat channels or "z"  
girts \*

Underlayment \*

Interlocking reveal wall panel \*

\* (Supplied by  
Metaltech-USA if  
requested)

Varies

Air flow

Field folded

**NOTE:**

Information and details are only a baseline for system and installation. Modification to meet project requirement is the responsibility of the designer, architect and contractor. MetalTech Global project staff are available to assist throughout the design and build process. © MetalTech Global. All rights reserved.

UNLESS OTHERWISE SPECIFIED  
DIMENSIONS ARE IN INCHES

DRAWING NAME:  
PARAPET DETAIL – OPTION 1

REVISION NO:  
A

DATED CREATED:  
10/23/14



DWG NO:  
MT\_IRWPH\_1101

CHECKED BY:  
ESIMONSEN

APPROVED BY:  
ESIMONSEN

PROJECT NAME:  
TOP OF WALL DETAILS

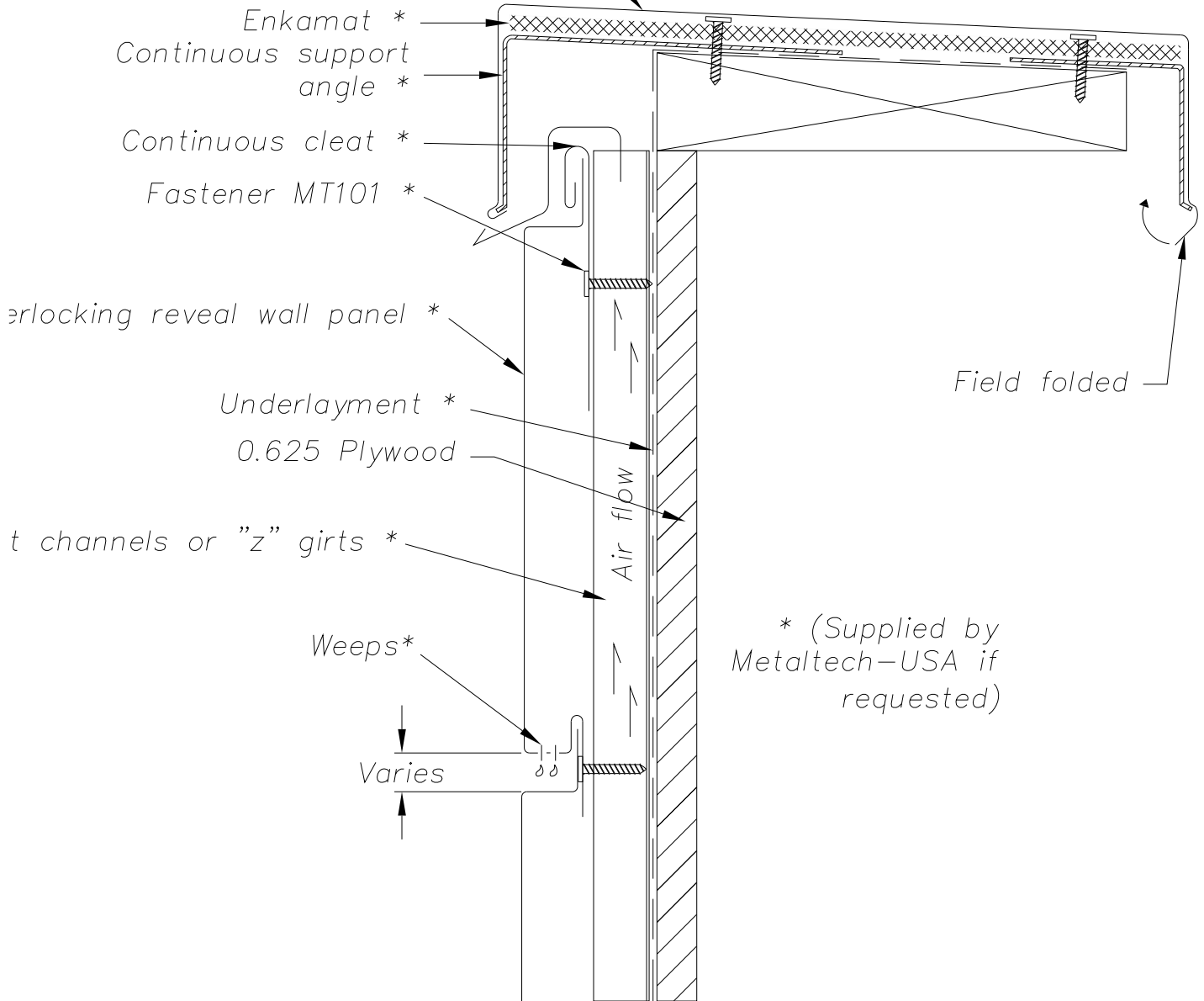
SCALE:  
NTS

SHEET NO:  
1 OF 5

SIZE:  
A

TOLERANCES:  
ANGULAR ±1° LINEAR ±0.06

Parapet cap w/proroofting  
and 3 degree min. slope \*



\* (Supplied by  
Metaltech-USA if  
requested)

**NOTE:**

Information and details are only a baseline for system and installation. Modification to meet project requirement is the responsibility of the designer, architect and contractor. MetalTech Global project staff are available to assist throughout the design and build process. © MetalTech Global. All rights reserved.

<p>UNLESS OTHERWISE SPECIFIED DIMENSIONS ARE IN INCHES</p>	<p>DRAWING NAME: PARAPET DETAIL – OPTION 2</p>		<p>REVISION NO: A</p>	<p>DATED CREATED: 10/23/2014</p>
	<p>DWG NO: MT_IRWPH_1102</p>		<p>CHECKED BY: ESIMONSEN</p>	<p>APPROVED BY: ESIMONSEN</p>
<p>PROJECT NAME: TOP OF WALL DETAILS</p>				
<p>SCALE: NTS</p>		<p>SHEET NO: 2 OF 5</p>	<p>SIZE: A</p>	<p>TOLERANCES: ANGULAR ±1° LINEAR ±0.06</p>



Parapet cap w/proroofting  
and 3 degree min. slope \*

Enkamat \*

Continuous support angle \*

Perforated bug screen  
to allow for ventilation \*

Fastener MT101 \*

Interlocking reveal  
wall panel \*

Hat channels or "z" girts \*

Underlayment \*

0.625 Plywood

Weeps\*

Varies


\* (Supplied by  
Metaltech-USA if  
requested)

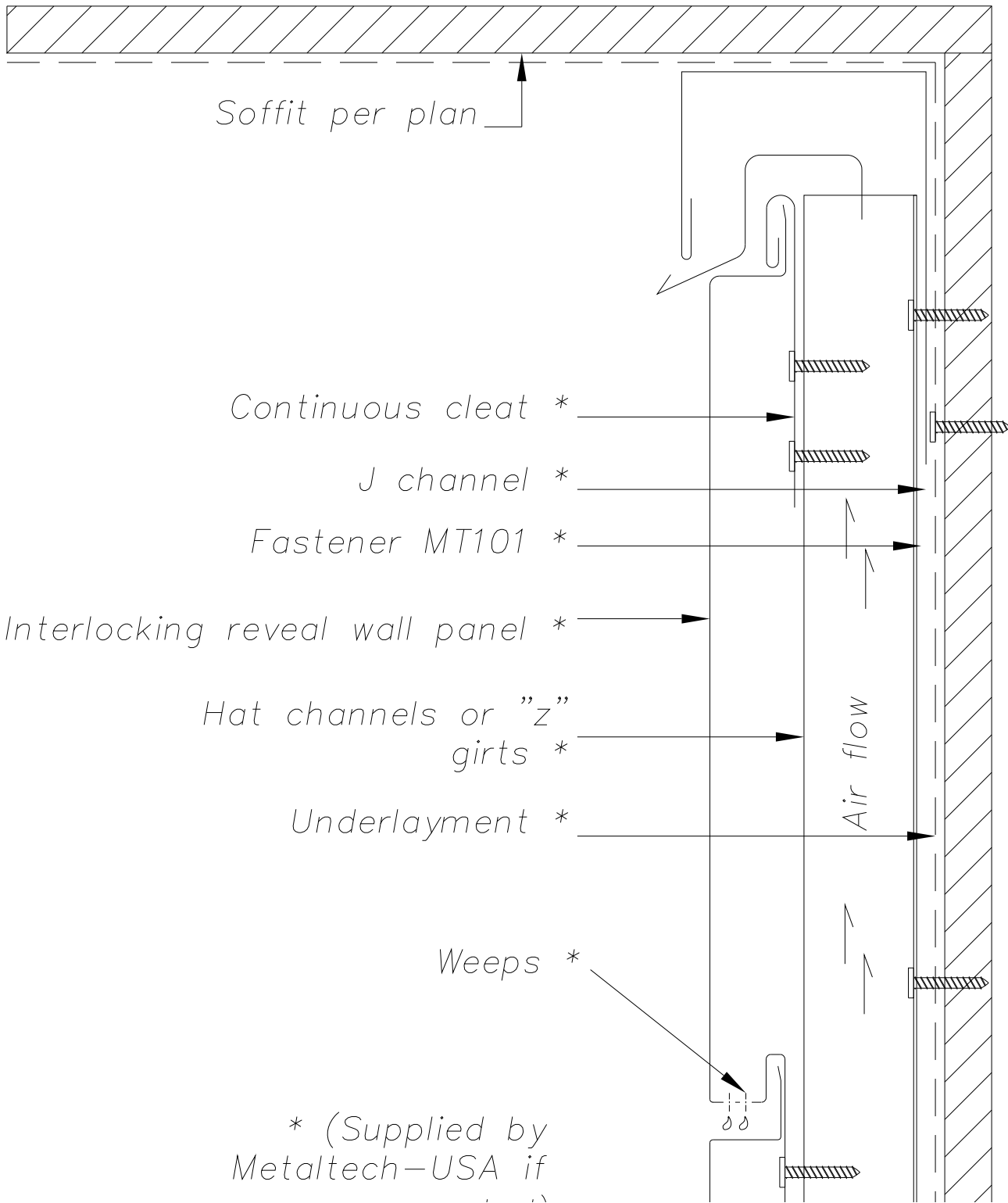
Field folded

Air flow

Air flow

**NOTE:**  
Information and details are only a baseline for system and installation. Modification to meet project requirement is the responsibility of the designer, architect and contractor.  
MetalTech Global project staff are available to assist throughout the design and build process. © MetalTech Global. All rights reserved.


 <p><b>METALTECH</b> Global a Forza Group Company DESIGNING STRENGTH</p>	<p>DRAWING NAME: PARAPET DETAIL – OPTION 3</p>		<p>REVISION NO: A</p>	<p>DATED CREATED: 10/23/2014</p>
	<p>DWG NO: MT_IRWPH_1103</p>		<p>CHECKED BY: ESIMONSEN</p>	<p>APPROVED BY: ESIMONSEN</p>
	<p>PROJECT NAME: TOP OF WALL DETAILS</p>			
	<p>SCALE: NTS</p>	<p>SHEET NO: 3 OF 5</p>	<p>SIZE: A</p>	<p>TOLERANCES: ANGULAR ±1° LINEAR ±0.06</p>

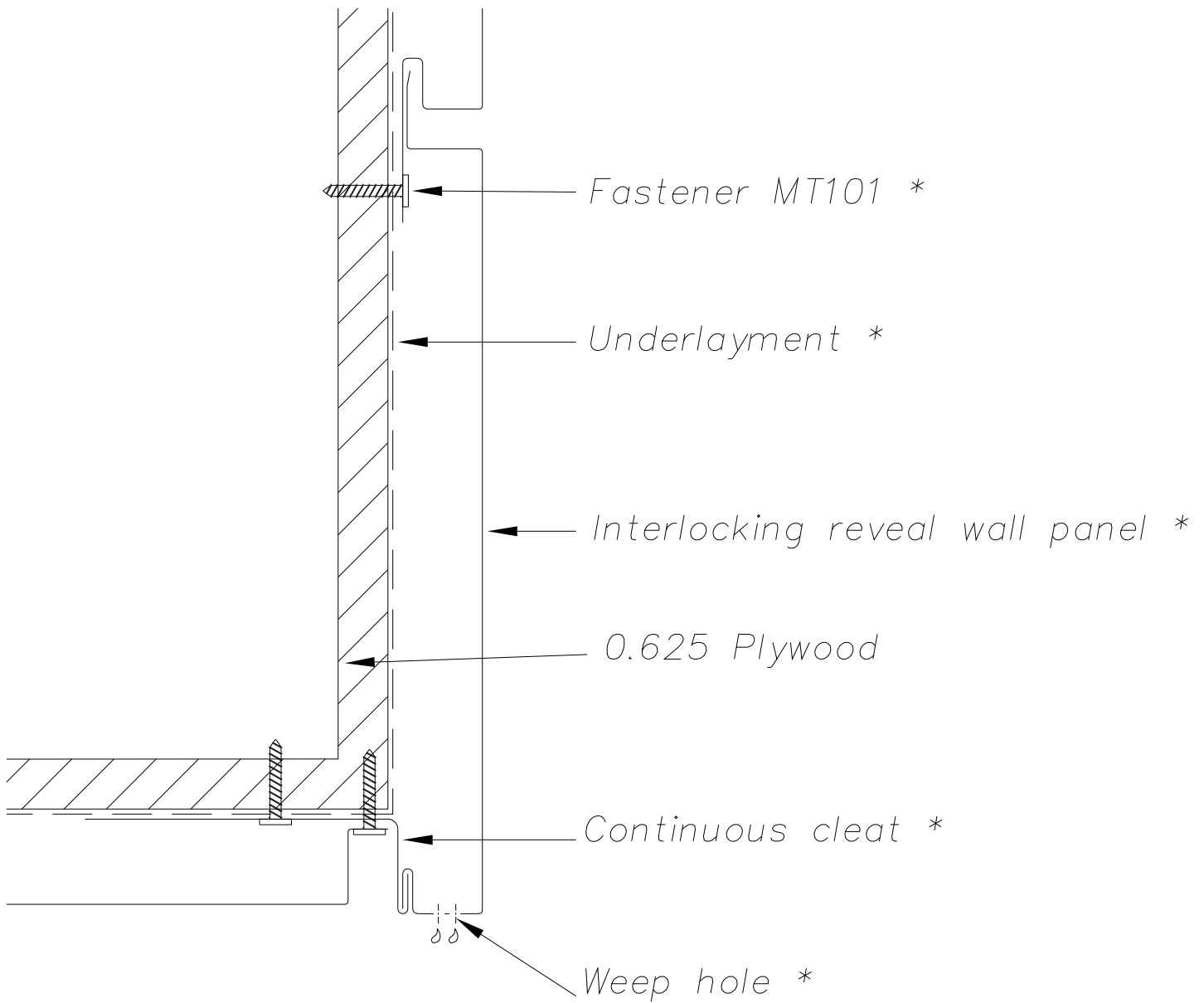


\* (Supplied by Metaltech-USA if

**NOTE:**

Information and details are only a baseline for system and installation. Modification to meet project requirement is the responsibility of the designer, architect and contractor. MetalTech Global project staff are available to assist throughout the design and build process. © MetalTech Global. All rights reserved.

UNLESS OTHERWISE SPECIFIED DIMENSIONS ARE IN INCHES  	DRAWING NAME: WALL TO SOFFIT TRANSITION		REVISION NO: A	DATED CREATED: 10/23/2014
	DWG NO: MT_IRWPH_1104		CHECKED BY: ESIMONSEN	APPROVED BY: ESIMONSEN
PROJECT NAME: TOP OF WALL DETAILS				
SCALE: NTS	SHEET NO: 4 OF 5	SIZE: A	TOLERANCES: ANGULAR ±1° LINEAR ±0.06	

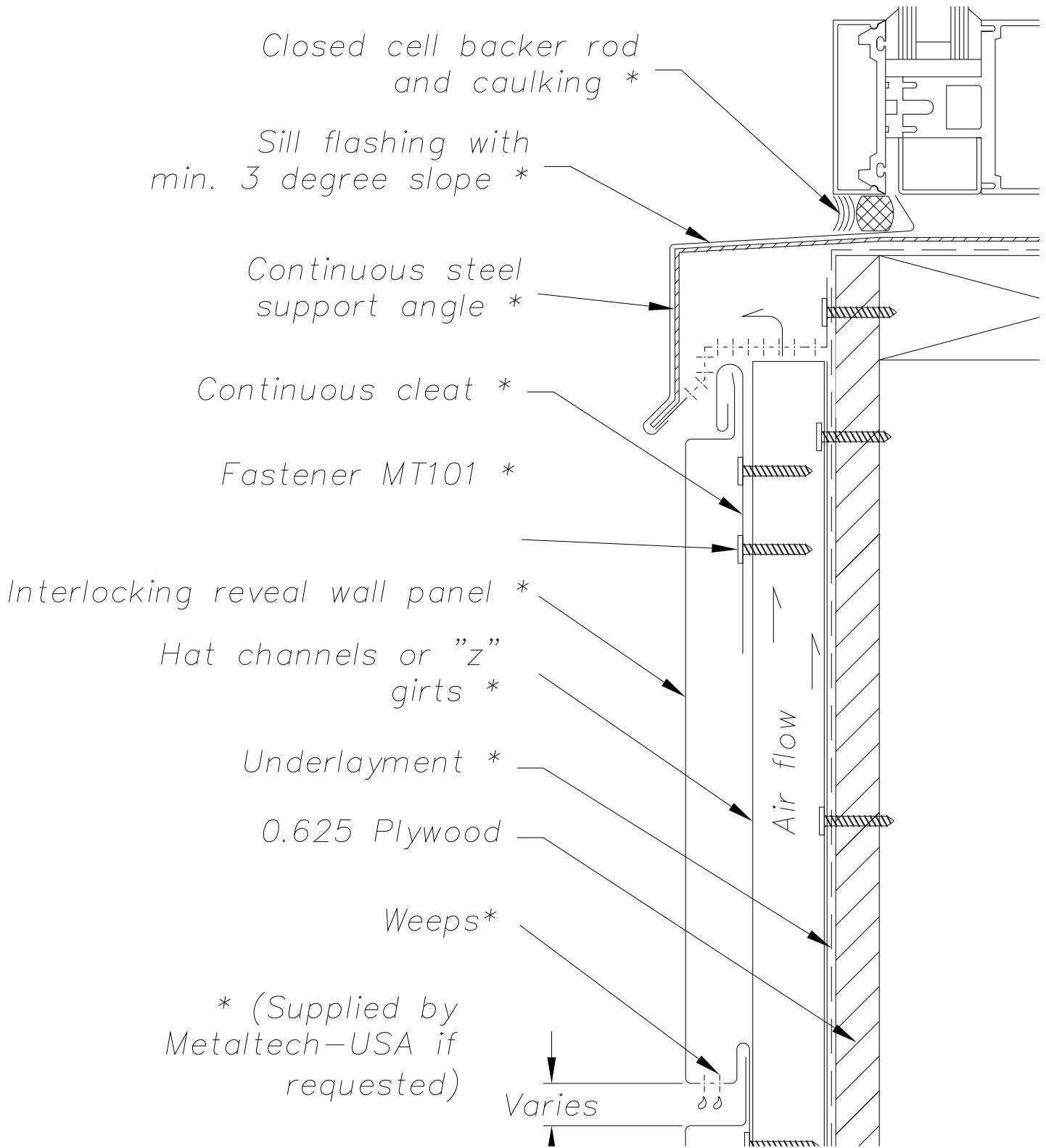


\* (Supplied by  
Metaltech-USA if  
requested)

**NOTE:**

Information and details are only a baseline for system and installation. Modification to meet project requirement is the responsibility of the designer, architect and contractor. MetalTech Global project staff are available to assist throughout the design and build process. © MetalTech Global. All rights reserved.

	UNLESS OTHERWISE SPECIFIED DIMENSIONS ARE IN INCHES		DRAWING NAME: SOFFIT TO FASCIA TRANSITION	REVISION NO: A	DATED CREATED: 10/28/2014
			DWG NO: MT_IRWPH_1105	CHECKED BY: ESIMONSEN	APPROVED BY: ESIMONSEN
	PROJECT NAME: TOP OF WALL DETAILS				
	SCALE: NTS	SHEET NO: 5 OF 5	SIZE: A	TOLERANCES: ANGULAR ±1° LINEAR ±0.06	



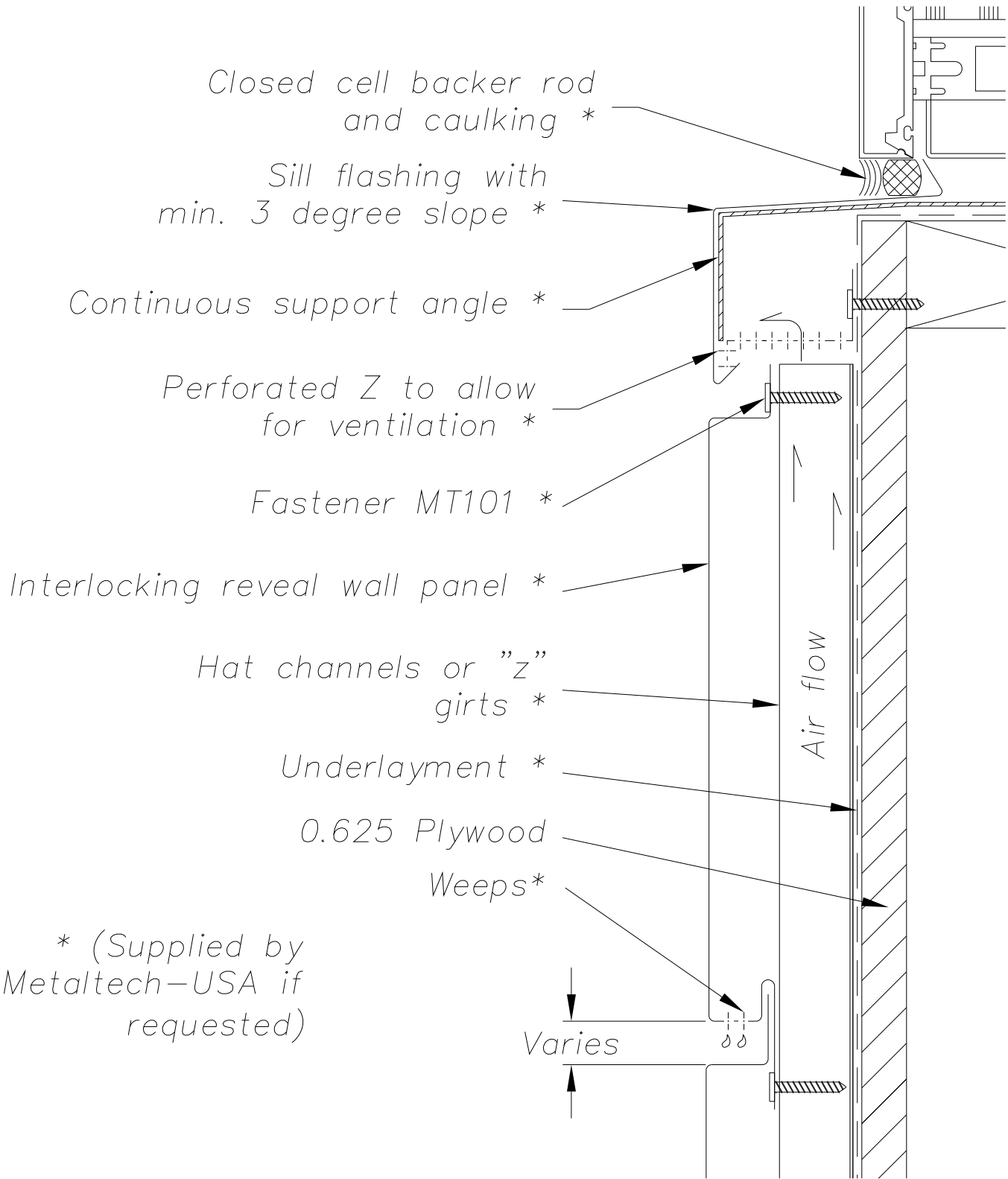
**NOTE:**

Information and details are only a baseline for system and installation. Modification to meet project requirement is the responsibility of the designer, architect and contractor. MetalTech Global project staff are available to assist throughout the design and build process. © MetalTech Global. All rights reserved.

<p>UNLESS OTHERWISE SPECIFIED DIMENSIONS ARE IN INCHES</p>	<p>DRAWING NAME: SILL DETAIL - OPTION 1</p>		<p>REVISION NO: A</p>	<p>DATED CREATED: 10/24/2014</p>
	<p>DWG NO: MT_IRWPH_1201</p>		<p>CHECKED BY: ESIMONSEN</p>	<p>APPROVED BY: ESIMONSEN</p>
<p>PROJECT NAME: WINDOW DETAILS</p>				
<p>SCALE: NTS</p>	<p>SHEET NO: 1 OF 10</p>	<p>SIZE: A</p>	<p>TOLERANCES: ANGULAR ±1° LINEAR ±0.06</p>	








\* (Supplied by Metaltech-USA if requested)

**NOTE:**  
 Information and details are only a baseline for system and installation. Modification to meet project requirement is the responsibility of the designer, architect and contractor.  
 MetalTech Global project staff are available to assist throughout the design and build process. © MetalTech Global. All rights reserved.

UNLESS OTHERWISE SPECIFIED DIMENSIONS ARE IN INCHES	DRAWING NAME: SILL DETAIL - OPTION 2	REVISION NO: A	DATED CREATED: 10/24/2014
	DWG NO: MT_IRWPH_1202	CHECKED BY: ESIMONSEN	APPROVED BY: ESIMONSEN
	PROJECT NAME: WINDOW DETAILS		
SCALE: NTS	SHEET NO: 2 OF 10	SIZE: A	TOLERANCES: ANGULAR ±1° LINEAR ±0.06

Closed cell backer rod and caulking \*

Sill flashing with min. 3 degree slope \*

Continuous vented steel support angle \*

Interlocking reveal wall panel \*

Hat channels or "z" girts \*

Underlayment \*

0.625 Plywood

Fastener MT101 \*

Weeps\*

\* (Supplied by Metaltech-USA if requested)

Varies

Air flow

**NOTE:**

Information and details are only a baseline for system and installation. Modification to meet project requirement is the responsibility of the designer, architect and contractor. MetalTech Global project staff are available to assist throughout the design and build process. © MetalTech Global. All rights reserved.

UNLESS OTHERWISE SPECIFIED DIMENSIONS ARE IN INCHES

DRAWING NAME:  
SILL DETAIL - OPTION 3

REVISION NO:  
A

DATED CREATED:  
10/24/2014

DWG NO:  
MT\_IRWPH\_1203

CHECKED BY:  
ESIMONSEN

APPROVED BY:  
ESIMONSEN



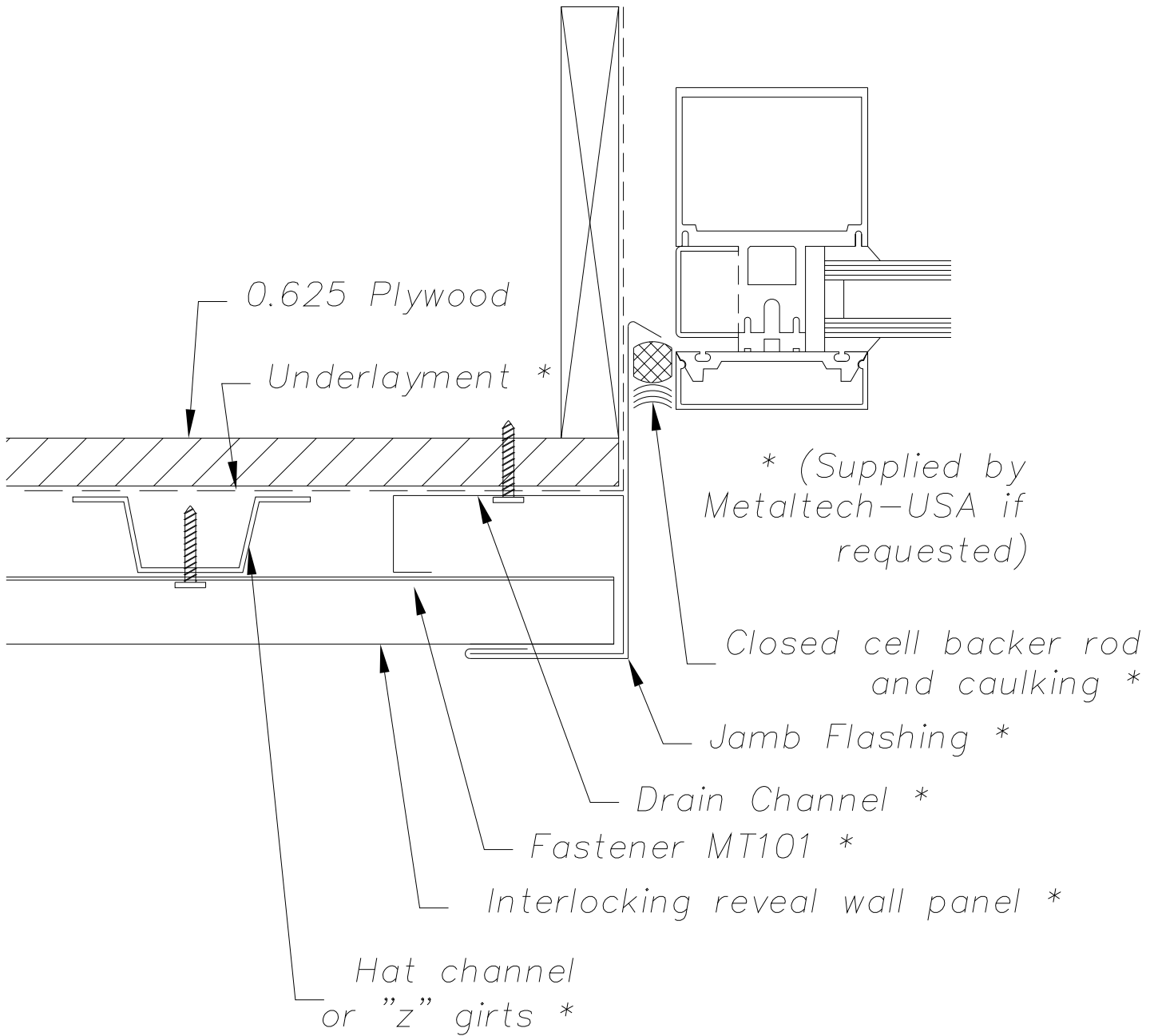
PROJECT NAME:  
WINDOW DETAILS

SCALE:  
NTS

SHEET NO:  
3 OF 10

SIZE:  
A

TOLERANCES:  
ANGULAR ±1° LINEAR ±0.06

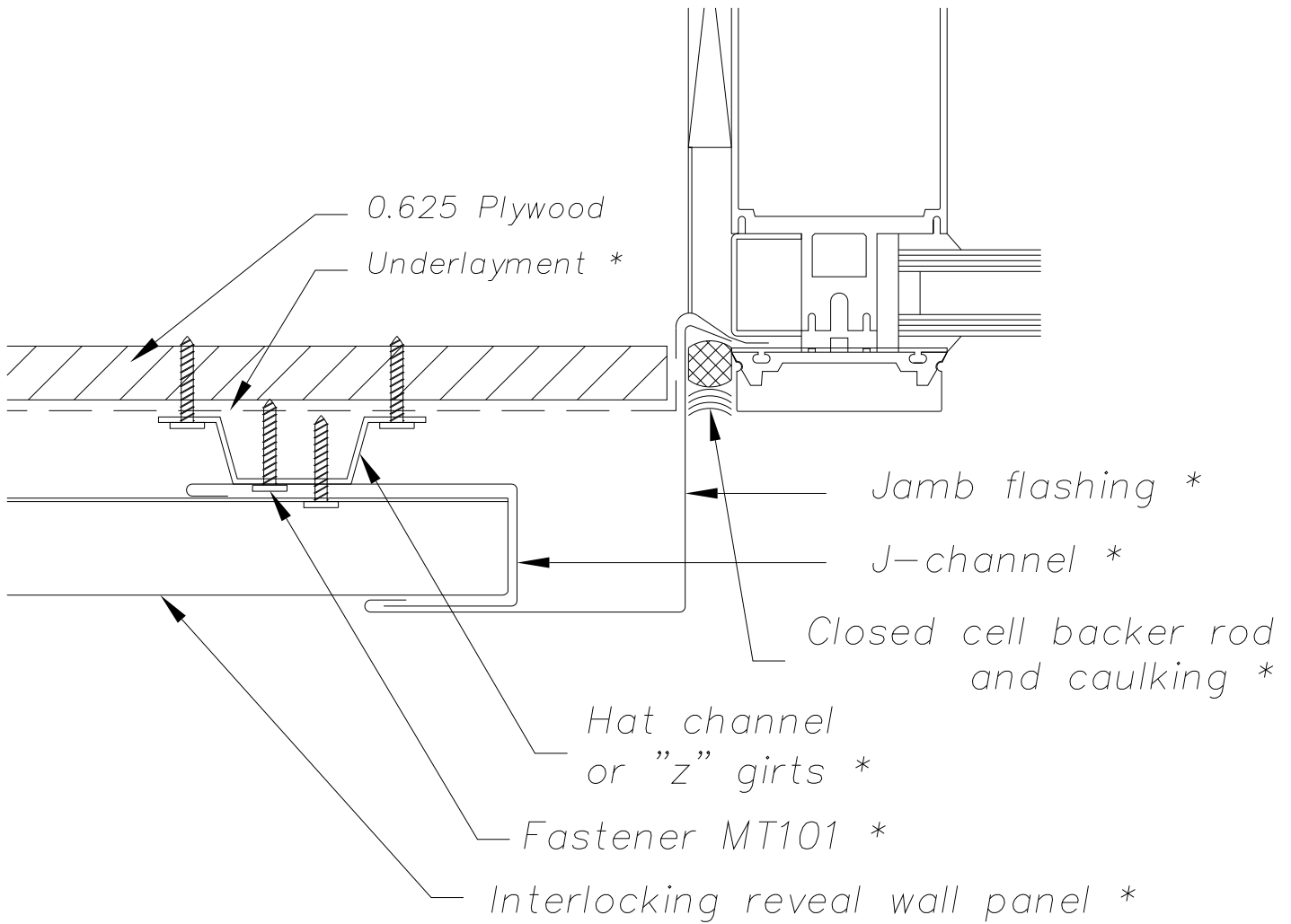


**NOTE:**

Information and details are only a baseline for system and installation. Modification to meet project requirement is the responsibility of the designer, architect and contractor. MetalTech Global project staff are available to assist throughout the design and build process. © MetalTech Global. All rights reserved.

<p>UNLESS OTHERWISE SPECIFIED DIMENSIONS ARE IN INCHES</p>	<p>DRAWING NAME: JAMB DETAIL - OPTION 1</p>		<p>REVISION NO: A</p>	<p>DATED CREATED: 10/24/2014</p>
	<p>DWG NO: MT_IRWPH_1204</p>		<p>CHECKED BY: ESIMONSEN</p>	<p>APPROVED BY: ESIMONSEN</p>
<p>PROJECT NAME: WINDOW DETAILS</p>				
<p>SCALE: NTS</p>		<p>SHEET NO: 4 OF 10</p>	<p>SIZE: A</p>	<p>TOLERANCES: ANGULAR ±1° LINEAR ±0.06</p>



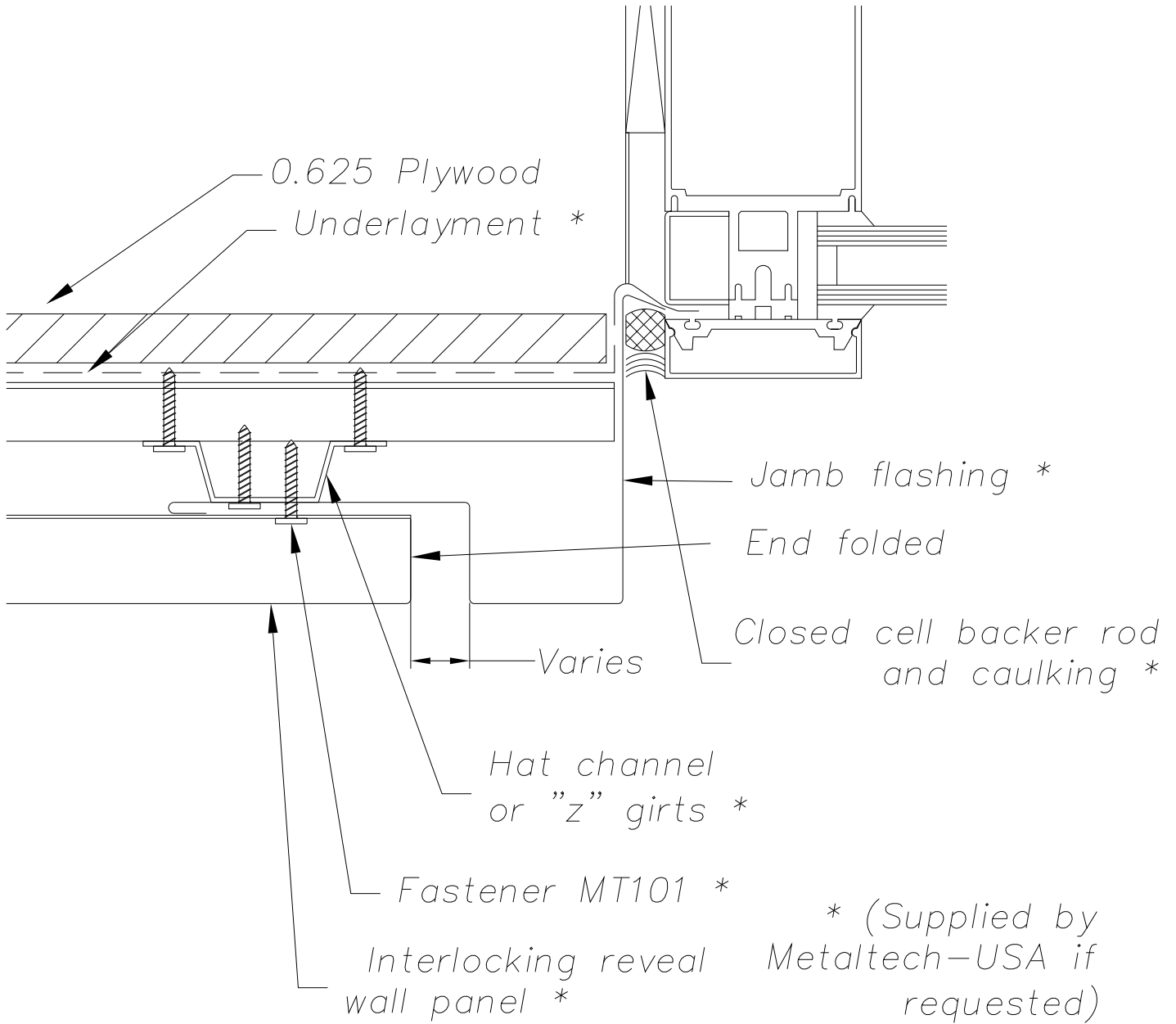


\* (Supplied by Metaltech-USA if requested)

**NOTE:**

Information and details are only a baseline for system and installation. Modification to meet project requirement is the responsibility of the designer, architect and contractor. MetalTech Global project staff are available to assist throughout the design and build process. © MetalTech Global. All rights reserved.

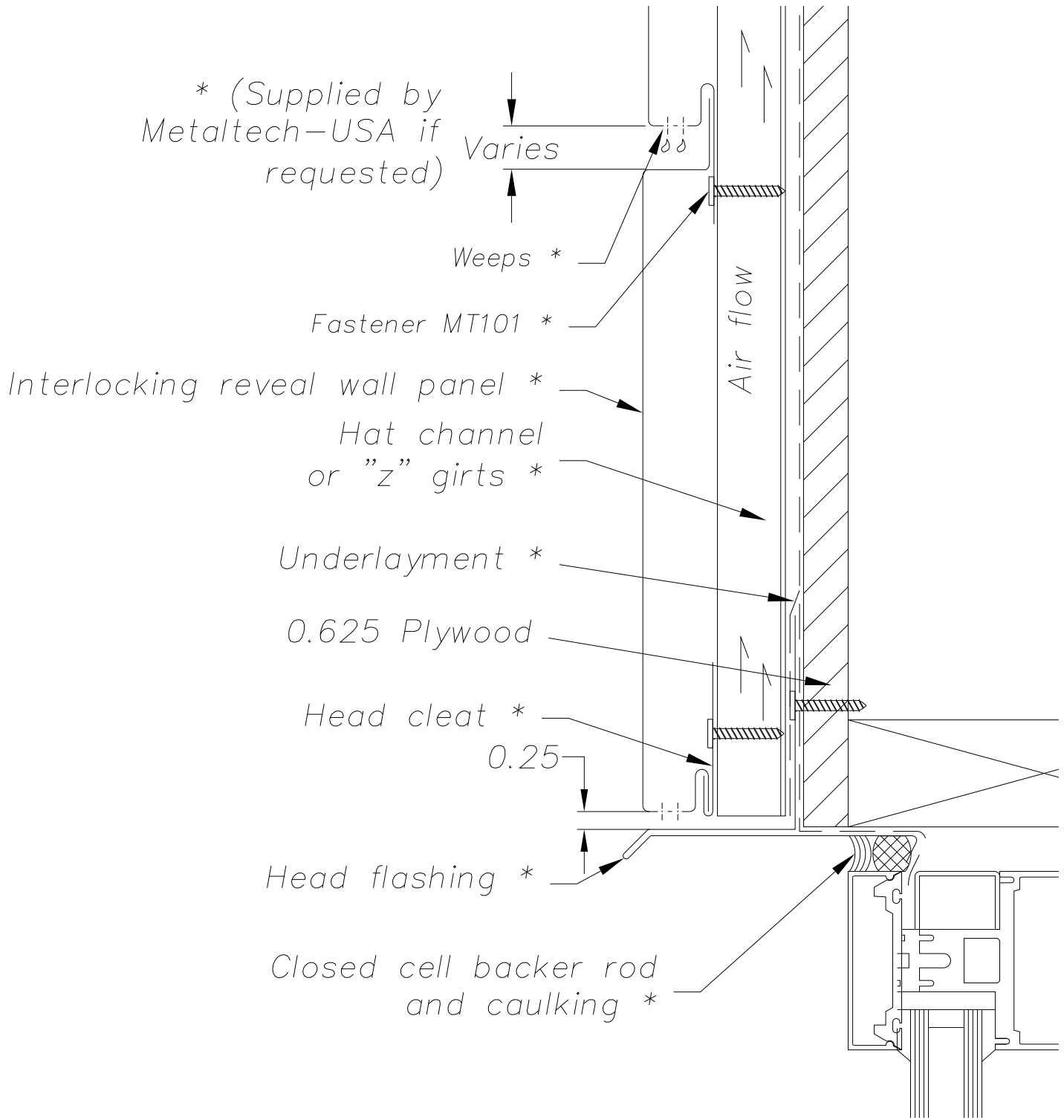
	UNLESS OTHERWISE SPECIFIED DIMENSIONS ARE IN INCHES		DRAWING NAME: JAMB DETAIL - OPTION 2	REVISION NO: A	DATED CREATED: 10/24/2014	
			DWG NO: MT_IRWPH_1205	CHECKED BY: ESIMONSEN	APPROVED BY: ESIMONSEN	
			PROJECT NAME: WINDOW DETAILS			
	SCALE: NTS	SHEET NO: 5 OF 10	SIZE: A	TOLERANCES: ANGULAR ±1° LINEAR ±0.06		



**NOTE:**  
 Information and details are only a baseline for system and installation. Modification to meet project requirement is the responsibility of the designer, architect and contractor.  
 MetalTech Global project staff are available to assist throughout the design and build process. © MetalTech Global. All rights reserved.

	DRAWING NAME: JAMB DETAIL - OPTION 3		REVISION NO: A	DATED CREATED: 10/24/2014
	DWG NO: MT_IRWPH_1206		CHECKED BY: ESIMONSEN	APPROVED BY: ESIMONSEN
	PROJECT NAME: WINDOW DETAILS			
	SCALE: NTS	SHEET NO: 6 OF 10	SIZE: A	TOLERANCES: ANGULAR ±1° LINEAR ±0.06

\* (Supplied by Metaltech-USA if requested)

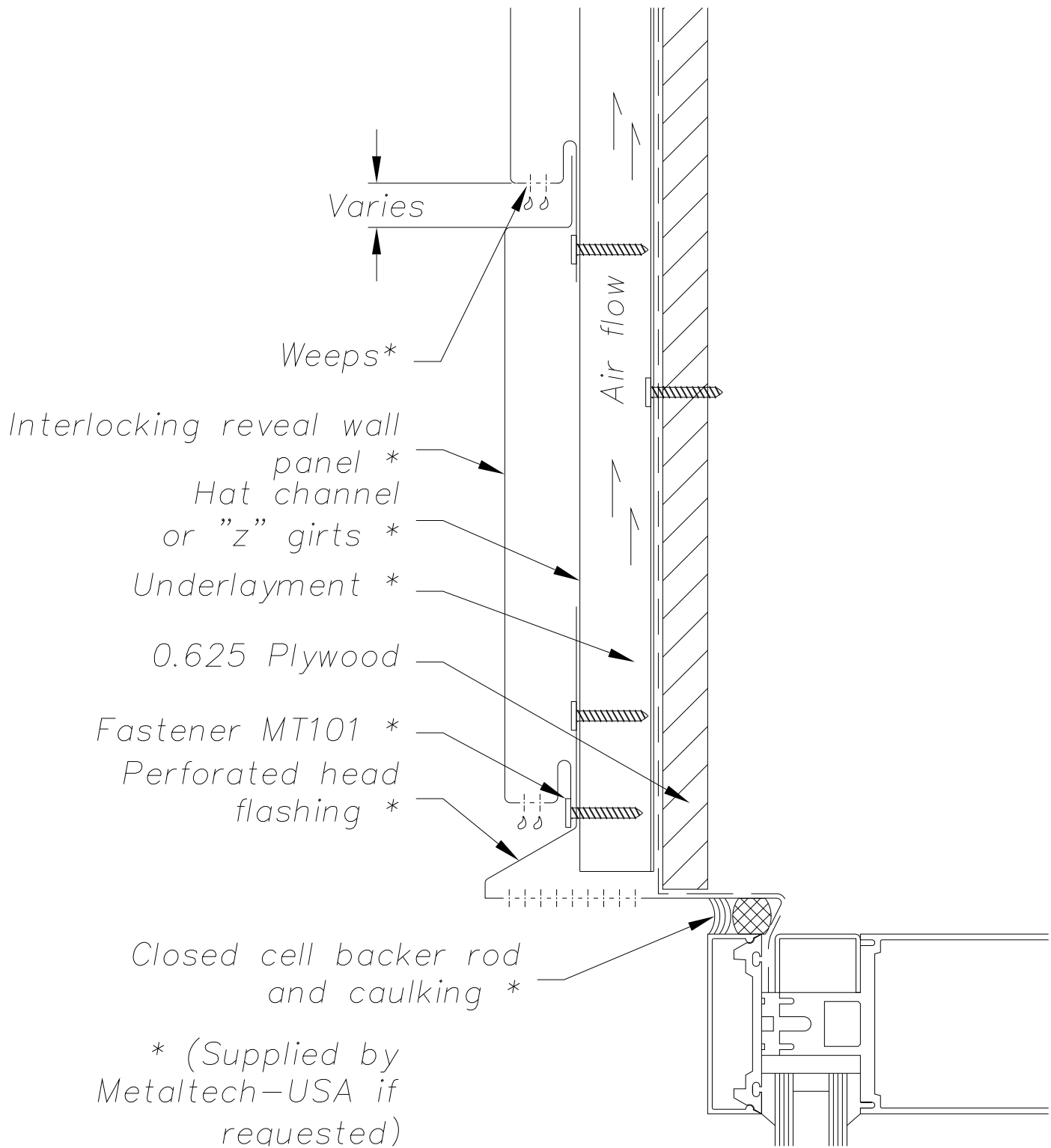


**NOTE:**

Information and details are only a baseline for system and installation. Modification to meet project requirement is the responsibility of the designer, architect and contractor. MetalTech Global project staff are available to assist throughout the design and build process. © MetalTech Global. All rights reserved.

<p>UNLESS OTHERWISE SPECIFIED DIMENSIONS ARE IN INCHES</p>	<p>DRAWING NAME: HEAD DETAIL – OPTION 1</p>		<p>REVISION NO: A</p>	<p>DATED CREATED: 10/24/2014</p>
	<p>DWG NO: MT_IRWPH_1207</p>		<p>CHECKED BY: ESIMONSEN</p>	<p>APPROVED BY: ESIMONSEN</p>
<p>PROJECT NAME: WINDOW DETAILS</p>				
<p>SCALE: NTS</p>	<p>SHEET NO: 7 OF 10</p>	<p>SIZE: A</p>	<p>TOLERANCES: ANGULAR ±1° LINEAR ±0.06</p>	

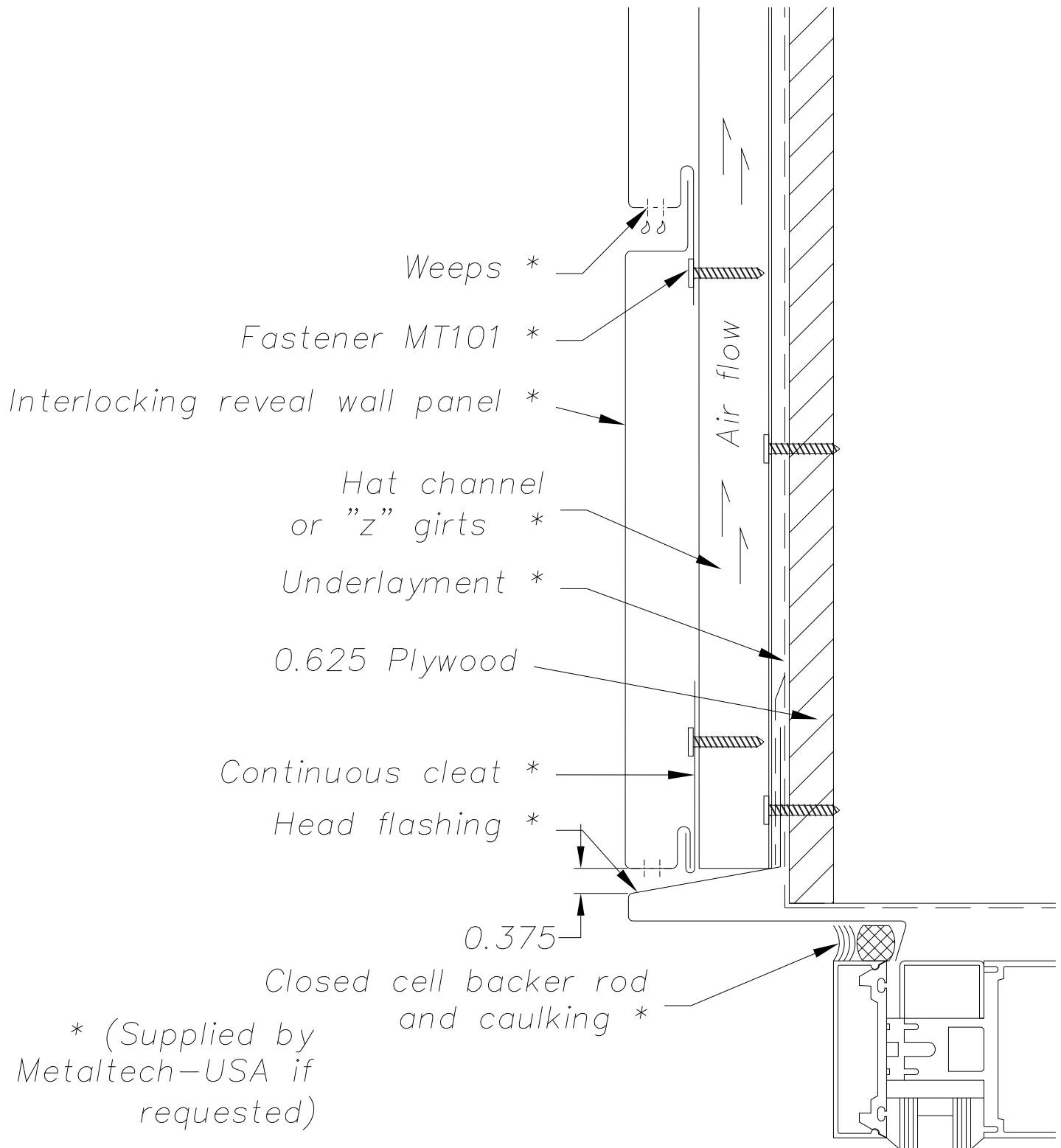




**NOTE:**

Information and details are only a baseline for system and installation. Modification to meet project requirement is the responsibility of the designer, architect and contractor. MetalTech Global project staff are available to assist throughout the design and build process. © MetalTech Global. All rights reserved.

	DRAWING NAME: HEAD DETAIL - OPTION 2		REVISION NO: A	DATED CREATED: 10/27/2014
	DWG NO: MT_IRWPH_1208		CHECKED BY: ESIMONSEN	APPROVED BY: ESIMONSEN
PROJECT NAME: WINDOW DETAILS				
SCALE: NTS	SHEET NO: 8 OF 10	SIZE: A	TOLERANCES: ANGULAR ±1° LINEAR ±0.06	



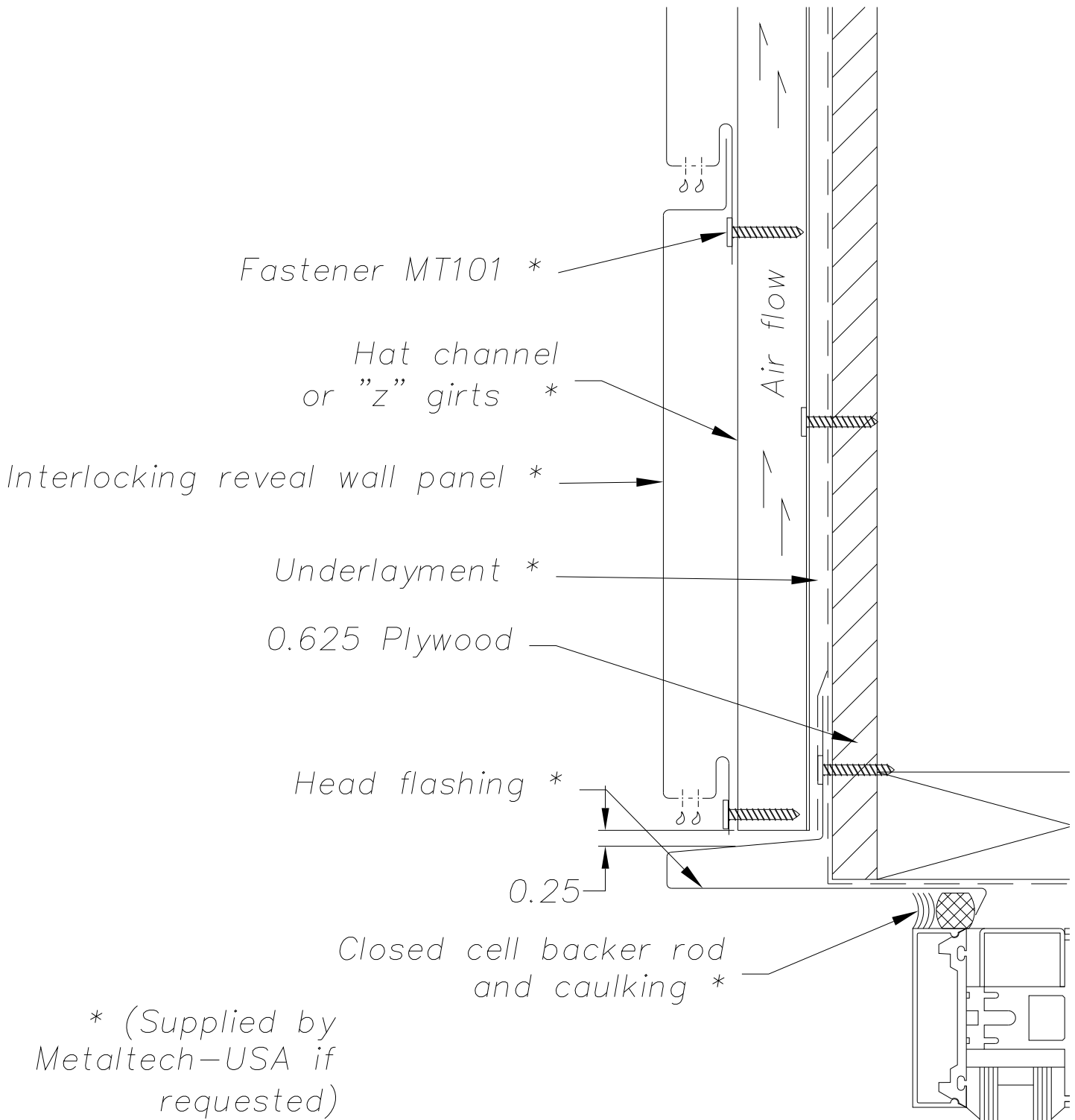
**NOTE:**

Information and details are only a baseline for system and installation. Modification to meet project requirement is the responsibility of the designer, architect and contractor.  
MetalTech Global project staff are available to assist throughout the design and build process. © MetalTech Global. All rights reserved.

<p>UNLESS OTHERWISE SPECIFIED DIMENSIONS ARE IN INCHES</p>	<p>DRAWING NAME: HEAD DETAIL - OPTION 3</p>		<p>REVISION NO: A</p>	<p>DATED CREATED: 10/27/2014</p>
	<p>DWG NO: MT_IRWPH_1209</p>		<p>CHECKED BY: ESIMONSEN</p>	<p>APPROVED BY: ESIMONSEN</p>
<p>PROJECT NAME: WINDOW DETAILS</p>				
<p>SCALE: NTS</p>	<p>SHEET NO: 9 OF 10</p>	<p>SIZE: A</p>	<p>TOLERANCES: ANGULAR ±1° LINEAR ±0.06</p>	



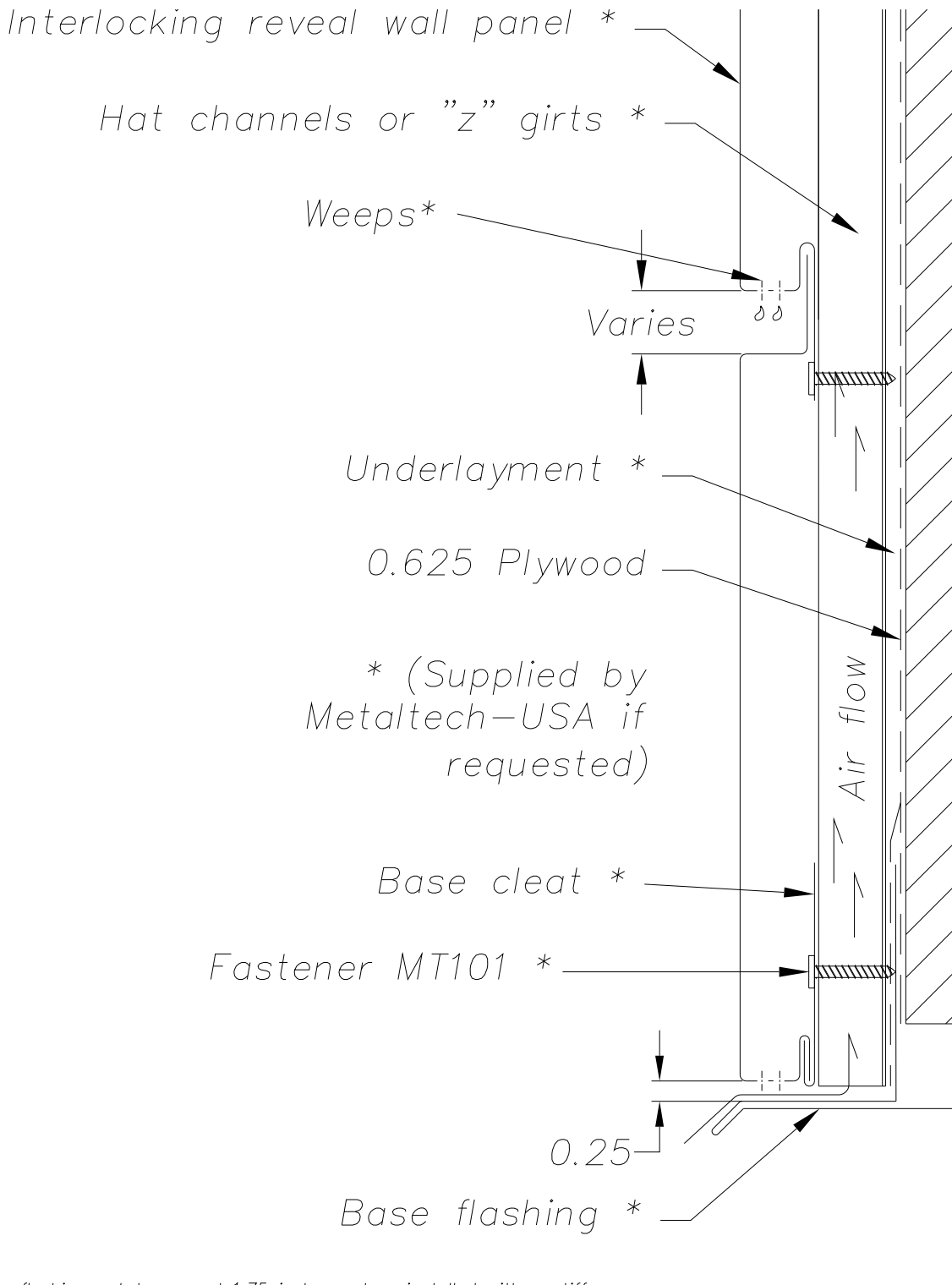




**NOTE:**

Information and details are only a baseline for system and installation. Modification to meet project requirement is the responsibility of the designer, architect and contractor. MetalTech Global project staff are available to assist throughout the design and build process. © MetalTech Global. All rights reserved.


	DRAWING NAME: HEAD DETAIL - OPTION 4		REVISION NO: A	DATED CREATED: 10/27/2014
	DWG NO: MT_IRWPH_1210		CHECKED BY: ESIMONSEN	APPROVED BY: ESIMONSEN
PROJECT NAME: WINDOW DETAILS				
SCALE: NTS	SHEET NO: 10 OF 10	SIZE: A	TOLERANCES: ANGULAR ±1° LINEAR ±0.06	



NOTE: Base flashing not to exceed 1.75 inches unless installed with a stiffener

**NOTE:**

Information and details are only a baseline for system and installation. Modification to meet project requirement is the responsibility of the designer, architect and contractor. MetalTech Global project staff are available to assist throughout the design and build process. © MetalTech Global. All rights reserved.

<p>UNLESS OTHERWISE SPECIFIED DIMENSIONS ARE IN INCHES</p> 	<p>DRAWING NAME: BASE DETAIL – OPTION 1</p>		<p>REVISION NO: A</p>	<p>DATED CREATED: 10/27/2014</p>
	<p>DWG NO: MT_IRWPH_1301</p>		<p>CHECKED BY: ESIMONSEN</p>	<p>APPROVED BY: ESIMONSEN</p>
<p>PROJECT NAME: BOTTOM OF WALL DETAILS</p>				
<p>SCALE: NTS</p>	<p>SHEET NO: 1 OF 2</p>	<p>SIZE: A</p>	<p>TOLERANCES: ANGULAR ±1° LINEAR ±0.06</p>	

Interlocking reveal wall panel \*

Hat channels or "z" girts \*

Varies

Underlayment \*

0.625 Plywood

\* (Supplied by  
Metaltech-USA if  
requested)


Fastener MT101 \*

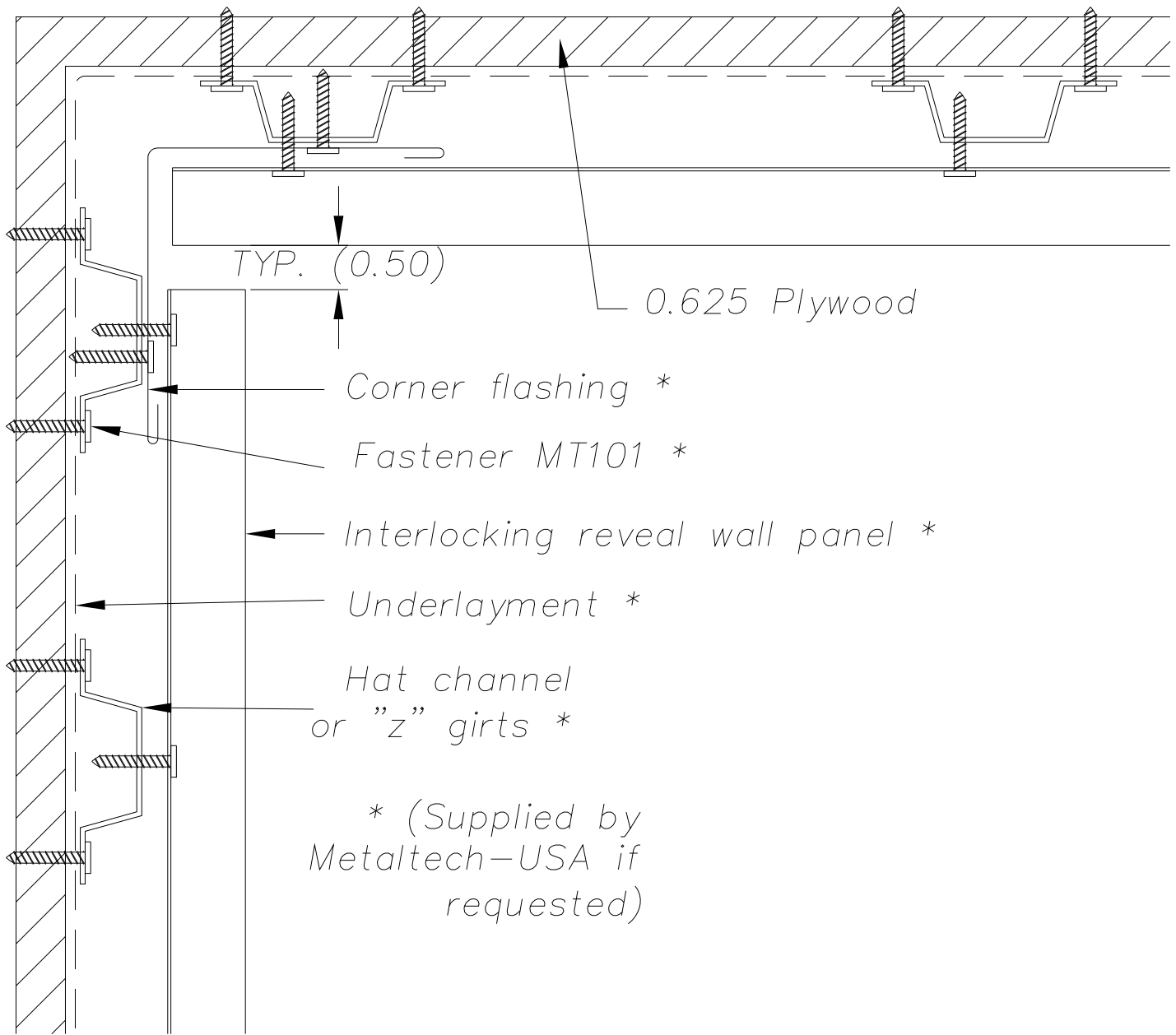
Weeps\*

Perforated base flashing \*

**NOTE:**

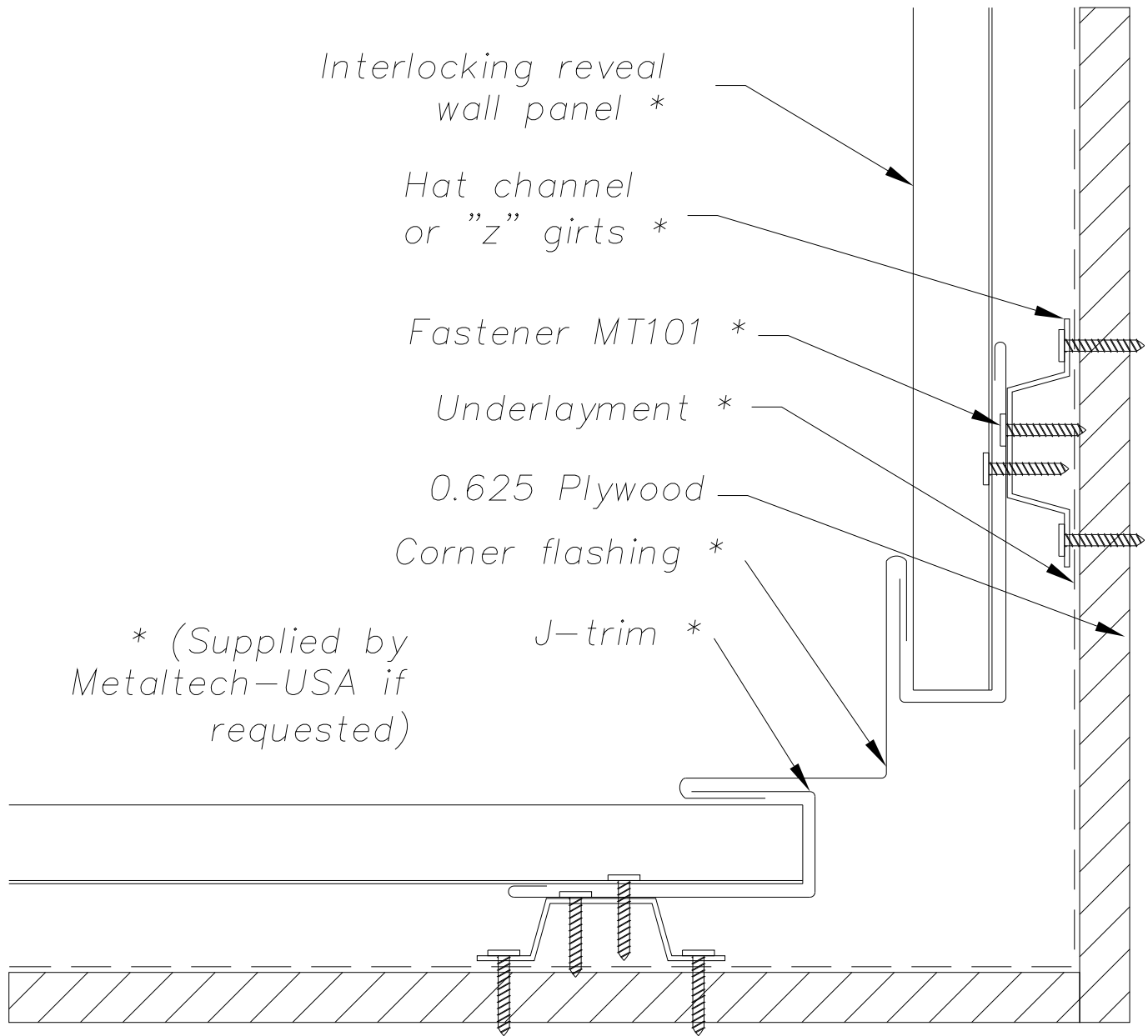
Information and details are only a baseline for system and installation. Modification to meet project requirement is the responsibility of the designer, architect and contractor. MetalTech Global project staff are available to assist throughout the design and build process. © MetalTech Global. All rights reserved.

 <p><b>METALTECH</b> Global a Forza Group Company DESIGNING STRENGTH</p>	<p>DRAWING NAME: BASE DETAIL - OPTION 2</p>		<p>REVISION NO: A</p>	<p>DATED CREATED: 10/27/2014</p>
	<p>DWG NO: MT_IRWPH_1302</p>		<p>CHECKED BY: ESIMONSEN</p>	<p>APPROVED BY: ESIMONSEN</p>
	<p>PROJECT NAME: BOTTOM OF WALL DETAILS</p>			
	<p>SCALE: NTS</p>	<p>SHEET NO: 2 OF 2</p>	<p>SIZE: A</p>	<p>TOLERANCES: ANGULAR ±1° LINEAR ±0.06</p>



**NOTE:**  
 Information and details are only a baseline for system and installation. Modification to meet project requirement is the responsibility of the designer, architect and contractor.  
 MetalTech Global project staff are available to assist throughout the design and build process. © MetalTech Global. All rights reserved.

UNLESS OTHERWISE SPECIFIED DIMENSIONS ARE IN INCHES	DRAWING NAME: INTERIOR CORNER – OPTION 1		REVISION NO: A	DATED CREATED: 10/27/2014	
	DWG NO: MT_IRWPH_1401		CHECKED BY: ESIMONSEN	APPROVED BY: ESIMONSEN	
	PROJECT NAME: INTERIOR DETAILS				
	SCALE: NTS	SHEET NO: 1 OF 3	SIZE: A	TOLERANCES: ANGULAR ±1° LINEAR ±0.06	



**NOTE:**  
 Information and details are only a baseline for system and installation. Modification to meet project requirement is the responsibility of the designer, architect and contractor.  
 MetalTech Global project staff are available to assist throughout the design and build process. © MetalTech Global. All rights reserved.

UNLESS OTHERWISE SPECIFIED DIMENSIONS ARE IN INCHES	DRAWING NAME: INTERIOR CORNER – OPTION 2		REVISION NO: A	DATED CREATED: 10/27/2014
	DWG NO: MT_IRWPH_1402		CHECKED BY: ESIMONSEN	APPROVED BY: ESIMONSEN
PROJECT NAME: INTERIOR DETAILS				
SCALE: NTS		SHEET NO: 2 OF 3	SIZE: A	TOLERANCES: ANGULAR ±1° LINEAR ±0.06



Interlocking  
reveal wall panel \*

Hat channel  
or "z" girts \*

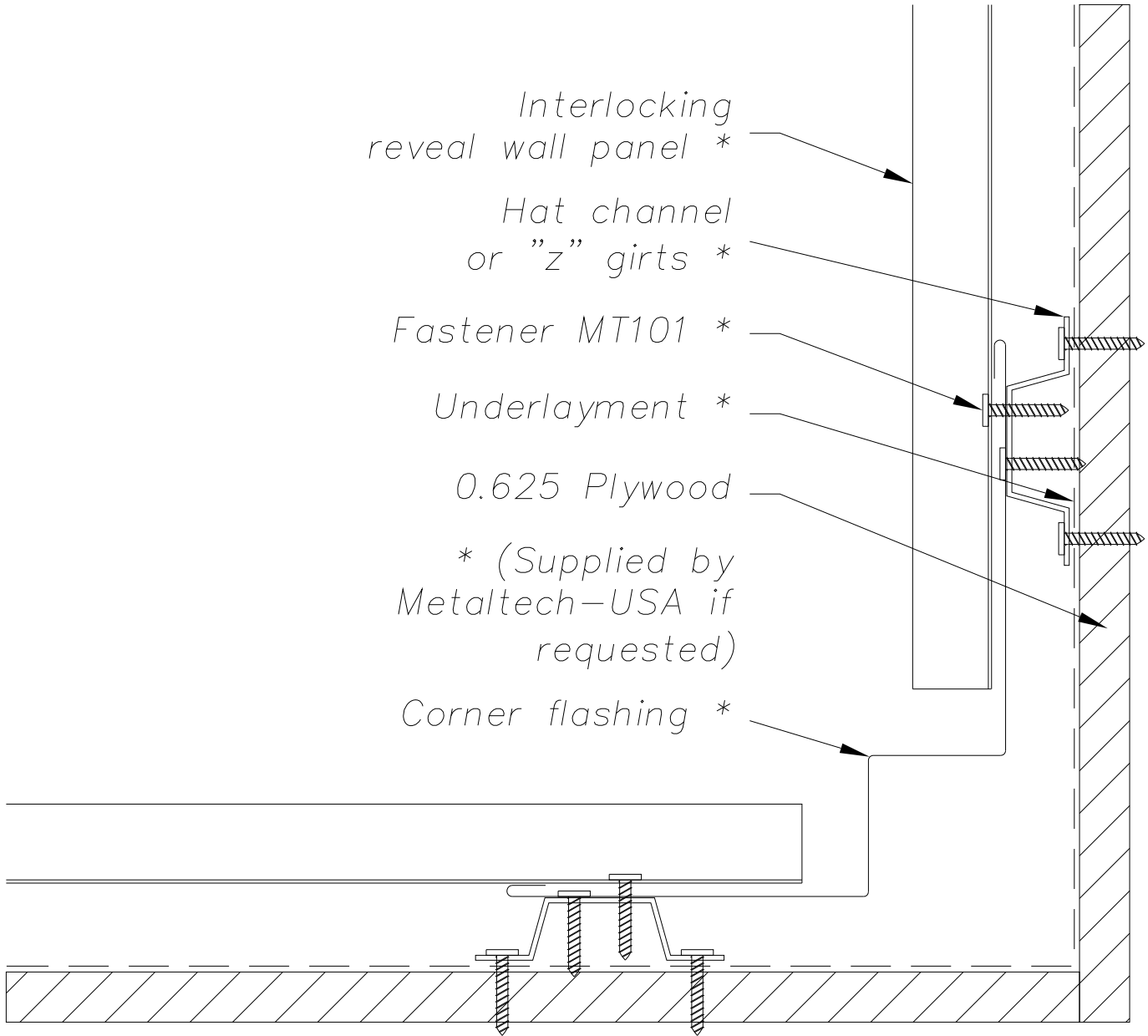
Fastener MT101 \*

Underlayment \*

0.625 Plywood

\* (Supplied by  
Metaltech-USA if  
requested)

Corner flashing \*



**NOTE:**

Information and details are only a baseline for system and installation. Modification to meet project requirement is the responsibility of the designer, architect and contractor.

MetalTech Global project staff are available to assist throughout the design and build process. © MetalTech Global. All rights reserved.

UNLESS OTHERWISE SPECIFIED  
DIMENSIONS ARE IN INCHES

DRAWING NAME:  
INTERIOR CORNER - OPTION 3

REVISION NO:  
A

DATED CREATED:  
10/27/2014

DWG NO:  
MT\_IRWPH\_1403

CHECKED BY:  
ESIMONSEN

APPROVED BY:  
ESIMONSEN



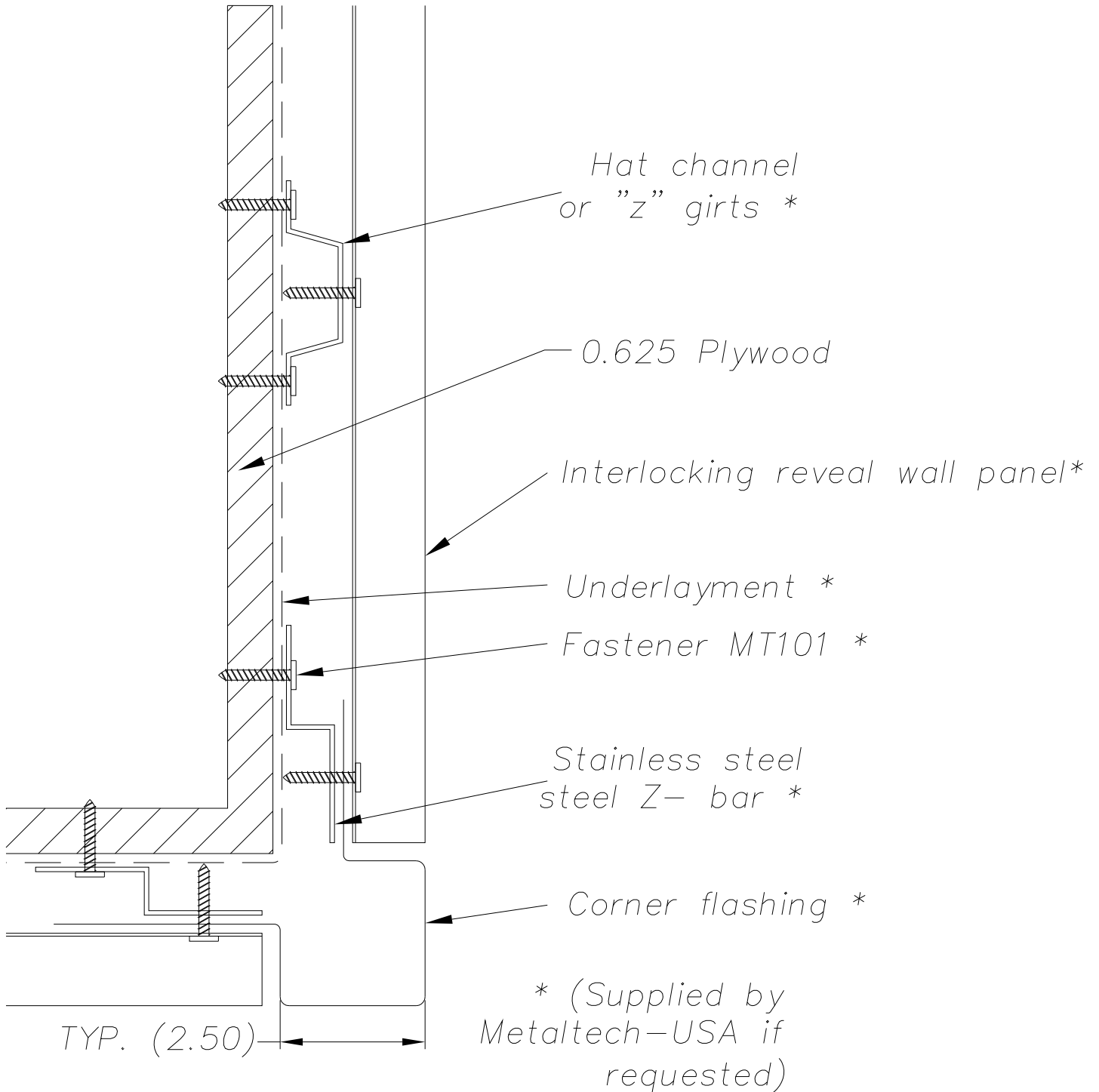
PROJECT NAME:  
INTERIOR DETAILS

SCALE:  
NTS

SHEET NO:  
3 OF 3


SIZE:  
A

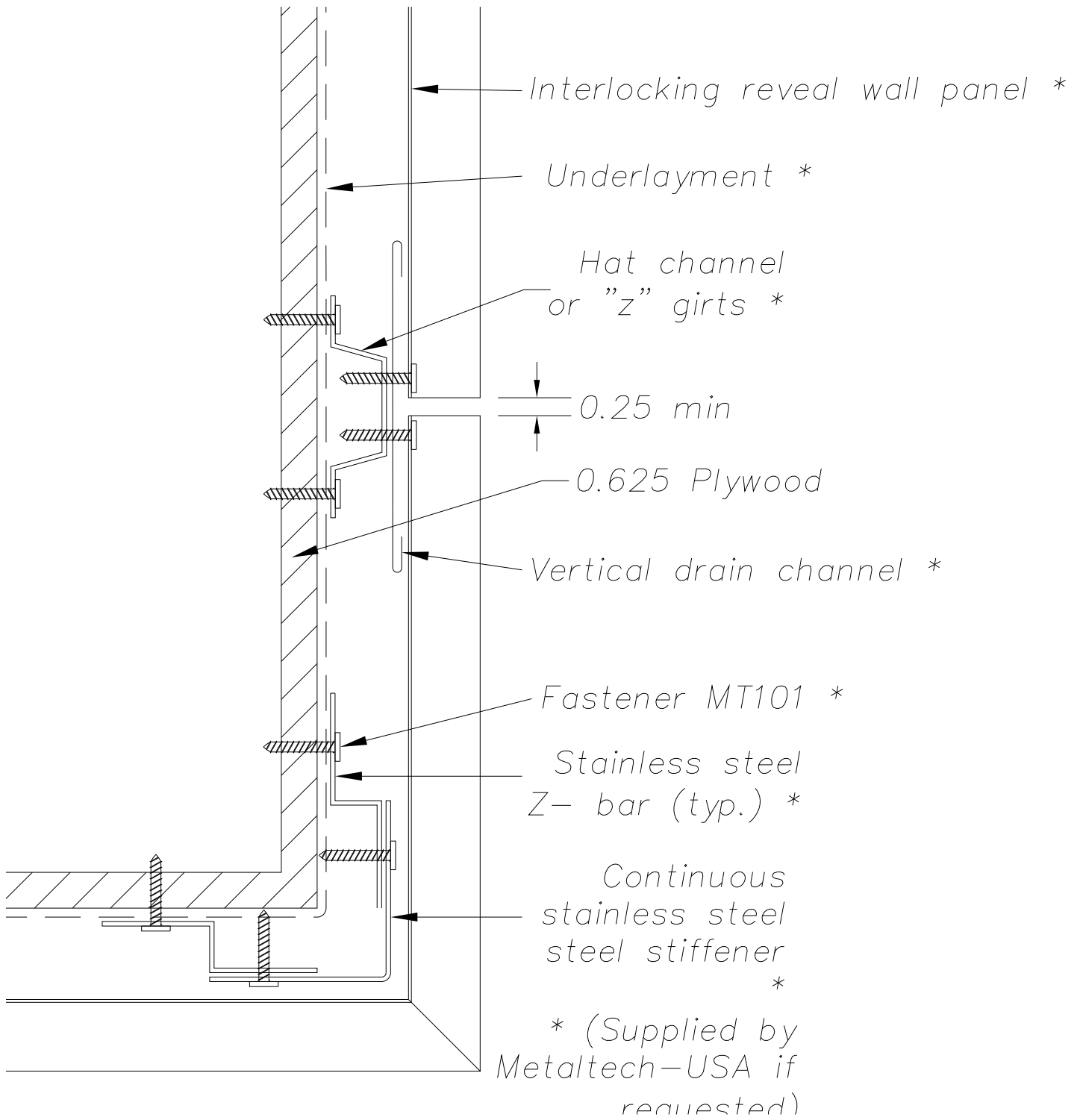
TOLERANCES:  
ANGULAR  $\pm 1^\circ$  LINEAR  $\pm 0.06$




**NOTE:**

Information and details are only a baseline for system and installation. Modification to meet project requirement is the responsibility of the designer, architect and contractor. MetalTech Global project staff are available to assist throughout the design and build process. © MetalTech Global. All rights reserved.

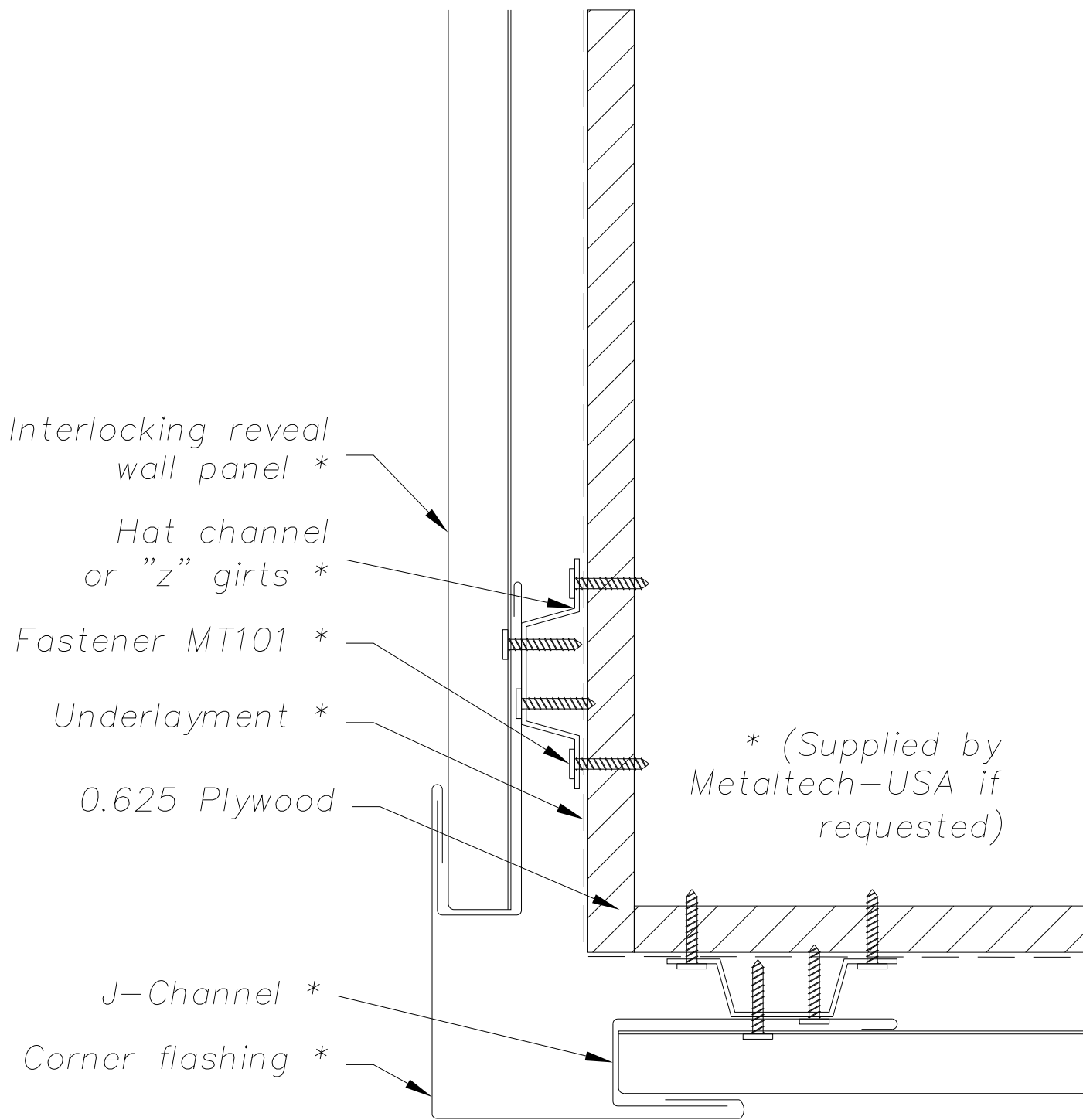
 <p><b>METALTECH</b> Global a Forza Group Company DESIGNING STRENGTH</p>	DRAWING NAME: EXTERIOR CORNER - OPTION 1		REVISION NO: A	DATED CREATED: 10/28/2014
	DWG NO: MT_IRWPH_1501		CHECKED BY: ESIMONSEN	APPROVED BY: ESIMONSEN
PROJECT NAME: EXTERIOR DETAILS				
SCALE: NTS	SHEET NO: 1 OF 4	SIZE: A	TOLERANCES: ANGULAR ±1° LINEAR ±0.06	



**NOTE:**  
 Information and details are only a baseline for system and installation. Modification to meet project requirement is the responsibility of the designer, architect and contractor.  
 MetalTech Global project staff are available to assist throughout the design and build process. © MetalTech Global. All rights reserved.


UNLESS OTHERWISE SPECIFIED DIMENSIONS ARE IN INCHES	DRAWING NAME: EXTERIOR CORNER - OPTION 2	REVISION NO: A	DATED CREATED: 10/28/2014	
	DWG NO: MT_IRWPH_1502	CHECKED BY: ESIMONSEN	APPROVED BY: ESIMONSEN	
	PROJECT NAME: EXTERIOR DETAILS			
	SCALE: NTS	SHEET NO: 2 OF 4	SIZE: A	TOLERANCES: ANGULAR ±1° LINEAR ±0.06





**NOTE:**

Information and details are only a baseline for system and installation. Modification to meet project requirement is the responsibility of the designer, architect and contractor. MetalTech Global project staff are available to assist throughout the design and build process. © MetalTech Global. All rights reserved.

UNLESS OTHERWISE SPECIFIED DIMENSIONS ARE IN INCHES	DRAWING NAME: EXTERIOR CORNER - OPTION 3	REVISION NO: A	DATED CREATED: 10/28/2014
	DWG NO: MT_IRWPH_1503	CHECKED BY: ESIMONSEN	APPROVED BY: ESIMONSEN
	PROJECT NAME: EXTERIOR DETAILS		
SCALE: NTS	SHEET NO: 3 OF 4	SIZE: A	TOLERANCES: ANGULAR ±1° LINEAR ±0.06

\* (Supplied by  
Metaltech-USA if  
requested)

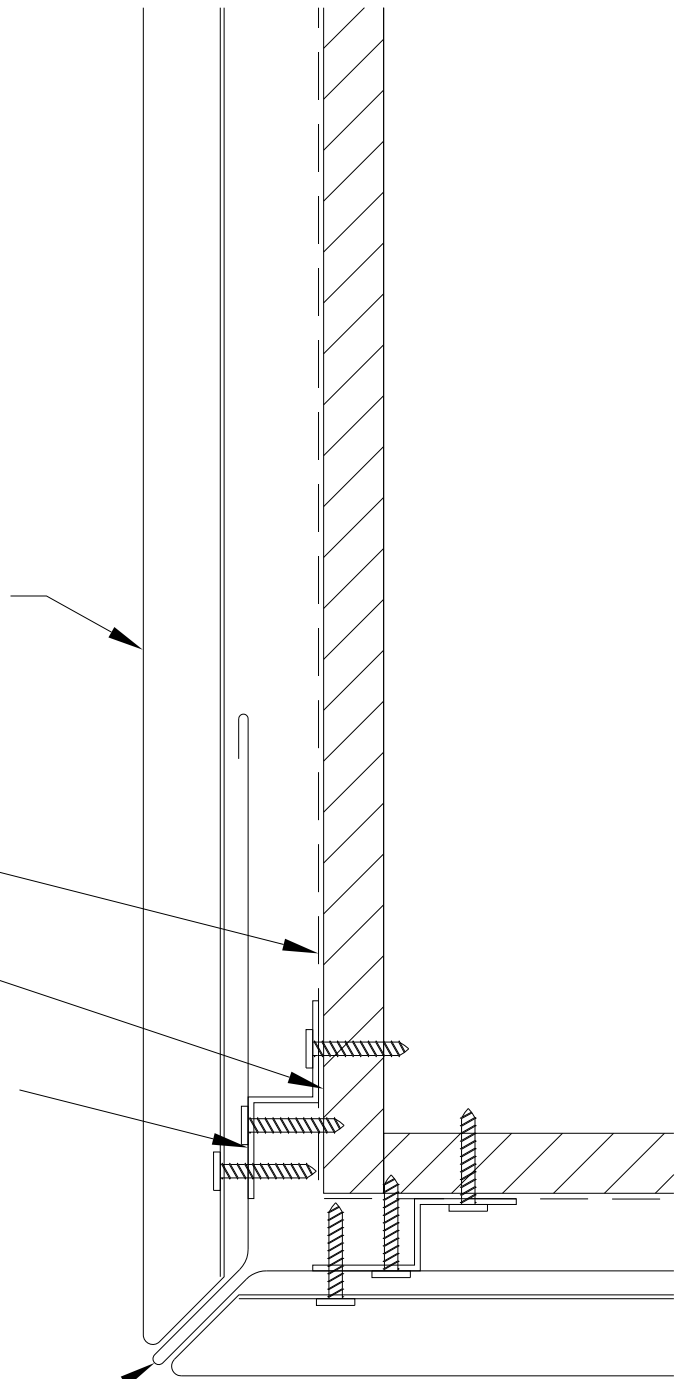
Interlocking reveal wall panel \*

Underlayment \*

0.625 Plywood


Fastener MT101 \*

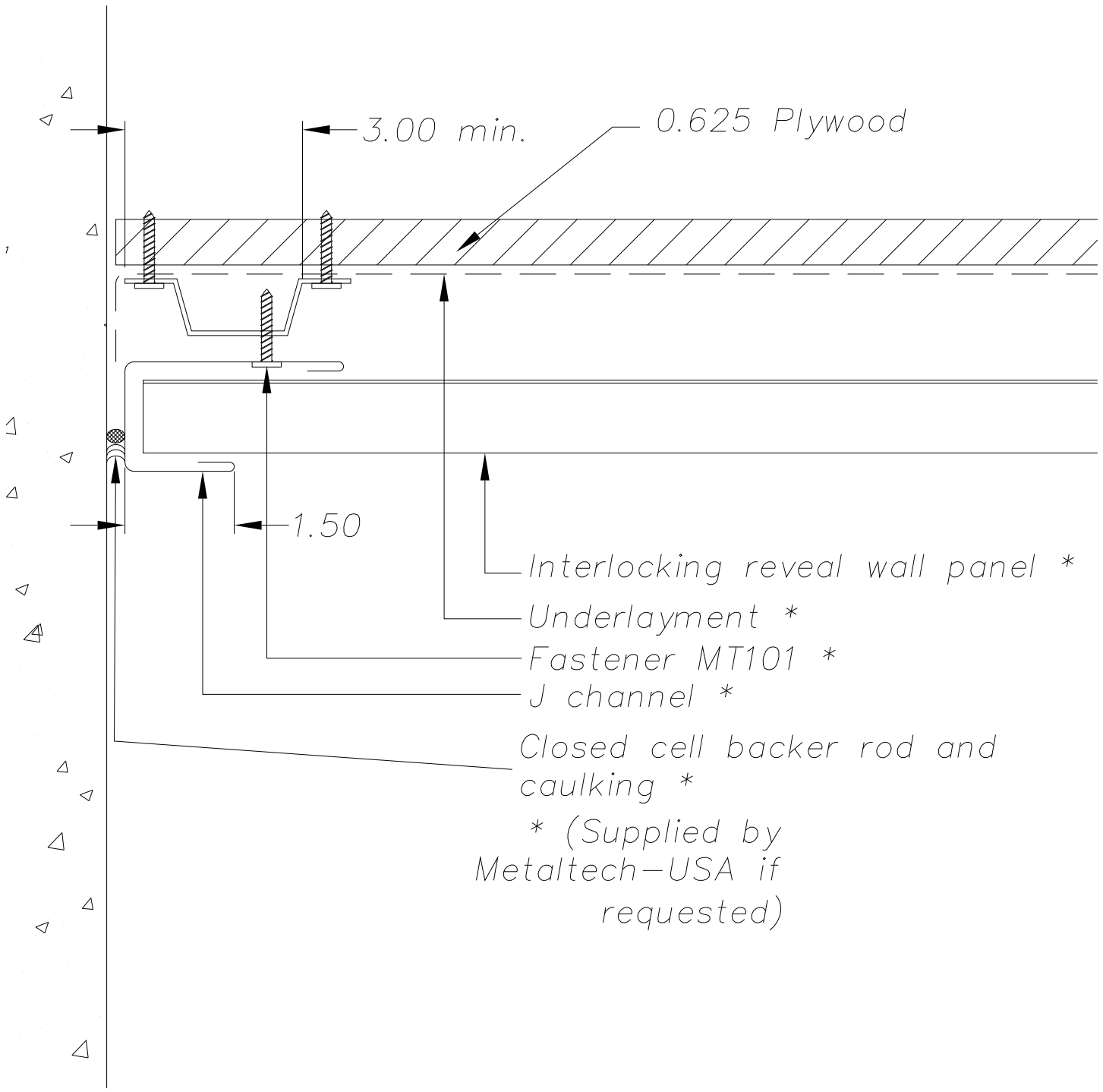
Corner flashing \*



**NOTE:**

Information and details are only a baseline for system and installation. Modification to meet project requirement is the responsibility of the designer, architect and contractor. MetalTech Global project staff are available to assist throughout the design and build process. © MetalTech Global. All rights reserved.

UNLESS OTHERWISE SPECIFIED DIMENSIONS ARE IN INCHES	DRAWING NAME: EXTERIOR CORNER - OPTION 4	REVISION NO: A	DATED CREATED: 10/28/2014
	DWG NO: MT_IRWPH_1504	CHECKED BY: ESIMONSEN	APPROVED BY: ESIMONSEN
	PROJECT NAME: EXTERIOR DETAILS		
SCALE: NTS	SHEET NO: 4 OF 4	SIZE: A	TOLERANCES: ANGULAR ±1° LINEAR ±0.06



**NOTE:**  
 Information and details are only a baseline for system and installation. Modification to meet project requirement is the responsibility of the designer, architect and contractor.  
 MetalTech Global project staff are available to assist throughout the design and build process. © MetalTech Global. All rights reserved.

	UNLESS OTHERWISE SPECIFIED DIMENSIONS ARE IN INCHES		DRAWING NAME: END OF WALL DETAIL	REVISION NO: A	DATED CREATED: 10/28/2014
			DWG NO: MT_IRWPH_1601	CHECKED BY: ESIMONSEN	APPROVED BY: ESIMONSEN
	PROJECT NAME: END OF WALL DETAILS				
	SCALE: NTS	SHEET NO: 1 OF 1	SIZE: A	TOLERANCES: ANGULAR ±1° LINEAR ±0.06	