

HV 90 Panel System

INDEX OF DRAWINGS

GENERAL DETAILS

MT_HV90WP_1001 – HV 90 Panel (Horizontal)
MT_HV90WP_1002 – HV 90 Panel (Isometric)
MT_HV90WP_1003 – Cross Seam Detail – Option 1
MT_HV90WP_1004 – Cross Seam Detail – Option 2
MT_HV90WP_1005 – Cross Seam Detail – Option 3
MT_HV90WP_1006 – Fasteners

TOP OF WALL DETAILS

MT_HV90WP_1101 – Parapet Detail – Option 1
MT_HV90WP_1102 – Parapet Detail – Option 2
MT_HV90WP_1103 – Parapet Detail – Option 3
MT_HV90WP_1104 – Parapet Detail – Option 4
MT_HV90WP_1105 – Wall To Soffit Transition

WINDOW DETAILS

MT_HV90WP_1201 – Jamb Detail – Option 1
MT_HV90WP_1202 – Jamb Detail – Option 2
MT_HV90WP_1203 – Head Detail – Option 1
MT_HV90WP_1204 – Head Detail – Option 2
MT_HV90WP_1205 – Sill Detail – Option 1
MT_HV90WP_1206 – Sill Detail – Option 2
MT_HV90WP_1207 – Sill Detail – Option 3

BOTTOM OF WALL DETAILS

MT_HV90WP_1301 – Base Detail – Option 1
MT_HV90WP_1302 – Base Detail – Option 2

INTERIOR DETAILS

MT_HV90WP_1401 – Interior Corner – Option 1
MT_HV90WP_1402 – Interior Corner – Option 2
MT_HV90WP_1403 – Interior Corner – Option 3

EXTERIOR DETAILS


MT_HV90WP_1501 – Exterior Corner – Option 1
MT_HV90WP_1502 – Exterior Corner – Option 2
MT_HV90WP_1503 – Exterior Corner – Option 3

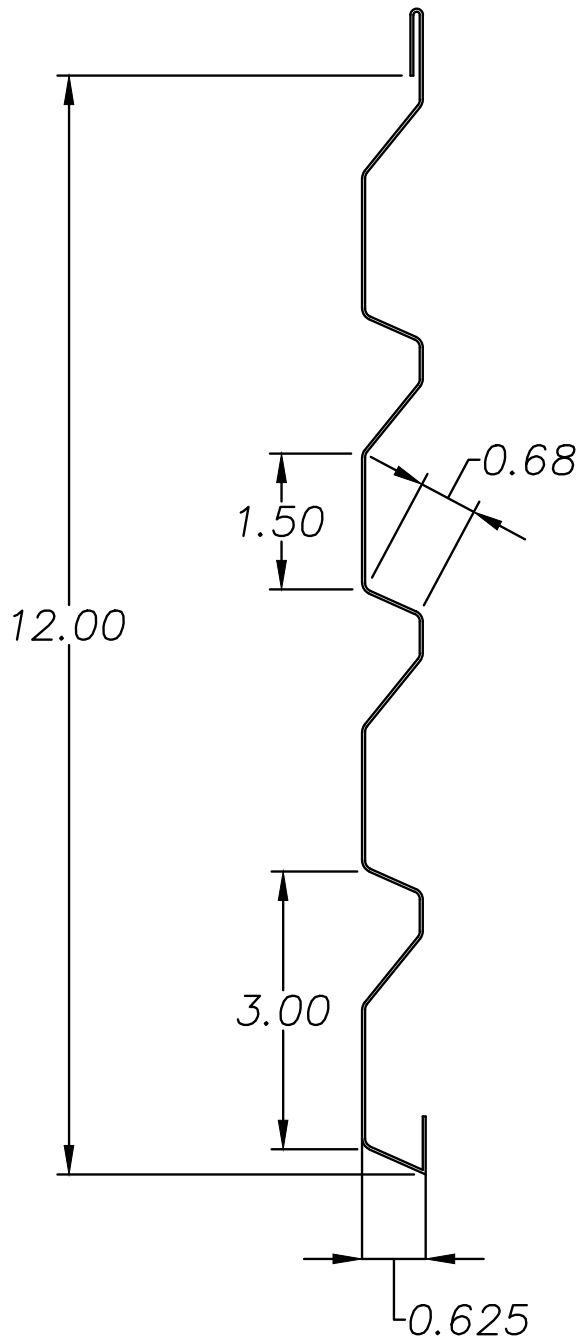
END OF WALL DETAILS

MT_HV90WP_1601 – End Of Wall Detail

NOTE:


Information and details are only a baseline for system and installation. Modification to meet project requirement is the responsibility of the designer, architect and contractor. MetalTech Global project staff are available to assist throughout the design and build process. © MetalTech Global. All rights reserved.

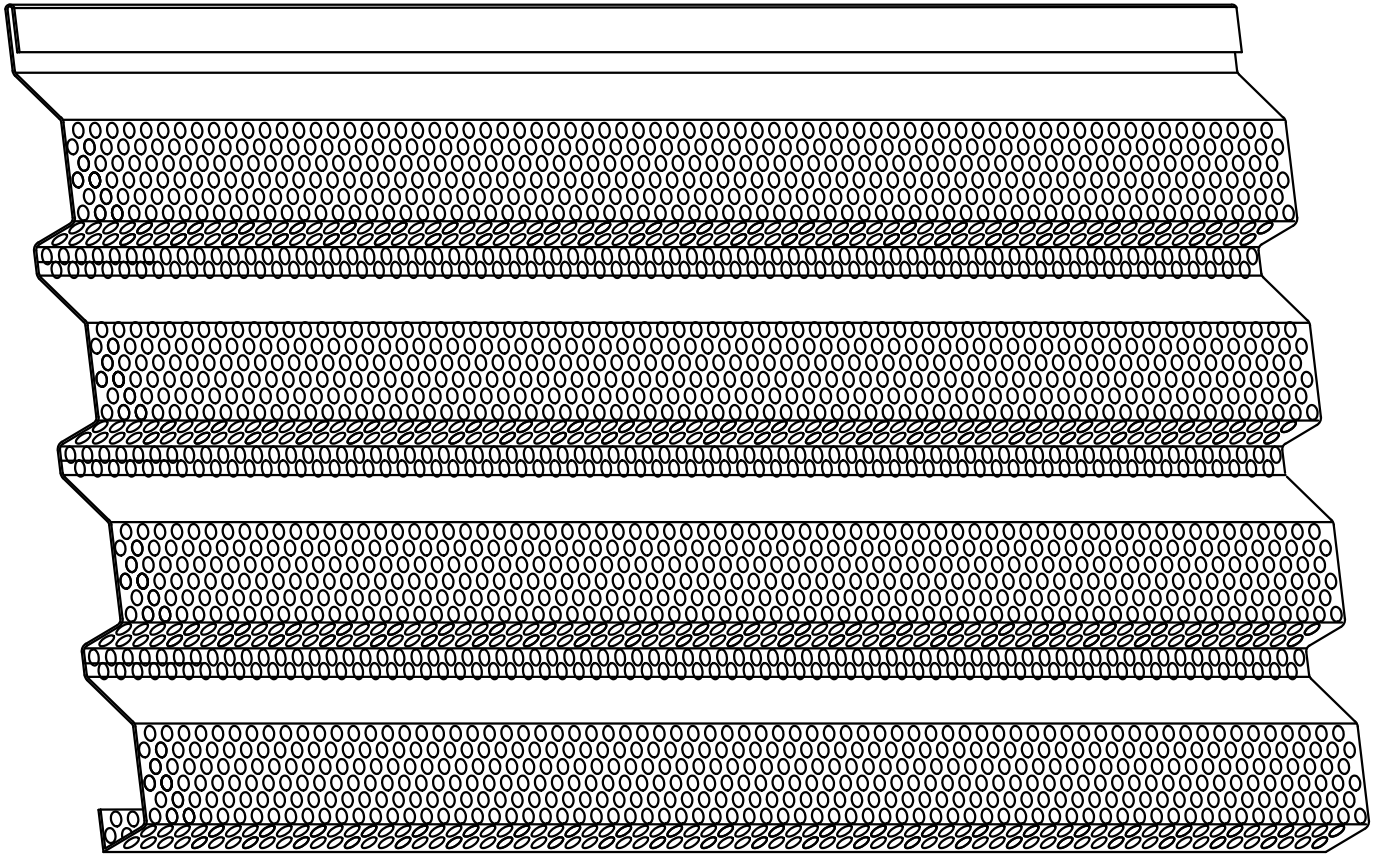
 METALTECH Global <small>a Forza Group Company</small> DESIGNING STRENGTH	DRAWING NAME: INDEX		REVISION NO: —	DATED CREATED: 04/13/2015
	DWG NO: MT_HV90WP_0000		CHECKED BY: THENDERSON	APPROVED BY: ESIMONSEN
	PROJECT NAME: INDEX			
	SCALE: NTS	SHEET NO: 1 OF 1	SIZE: A	TOLERANCES: ANGULAR ±1° LINEAR ±0.06




NOTE:

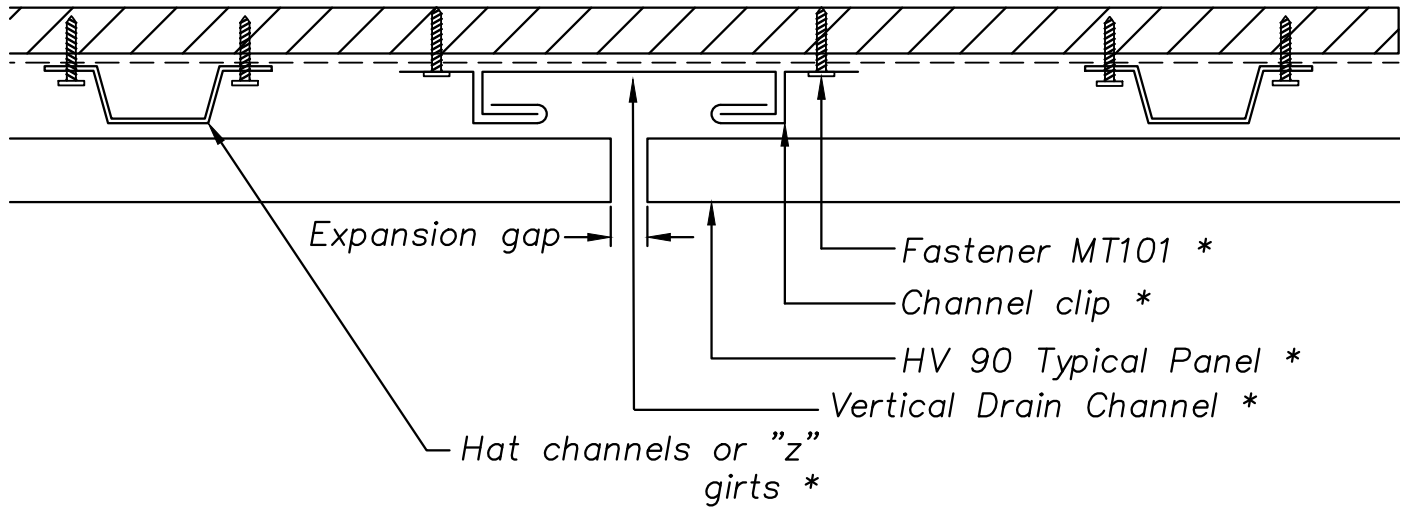
Information and details are only a baseline for system and installation. Modification to meet project requirement is the responsibility of the designer, architect and contractor. MetalTech Global project staff are available to assist throughout the design and build process. © MetalTech Global. All rights reserved.

UNLESS OTHERWISE SPECIFIED DIMENSIONS ARE IN INCHES	DRAWING NAME: HV 90 PANEL (HORIZONTAL)	REVISION NO: —	DATED CREATED: 04/13/2015
	DWG NO: MT_HV90WP_1001	CHECKED BY: THENDERSON	APPROVED BY: ESIMONSEN
	PROJECT NAME: GENERAL DETAILS		
	SCALE: NTS	SHEET NO: 1 OF 6	SIZE: A TOLERANCES: ANGULAR ±1° LINEAR ±0.06




NOTE:
Information and details are only a baseline for system and installation. Modification to meet project requirement is the responsibility of the designer, architect and contractor. MetalTech Global project staff are available to assist throughout the design and build process. © MetalTech Global. All rights reserved.

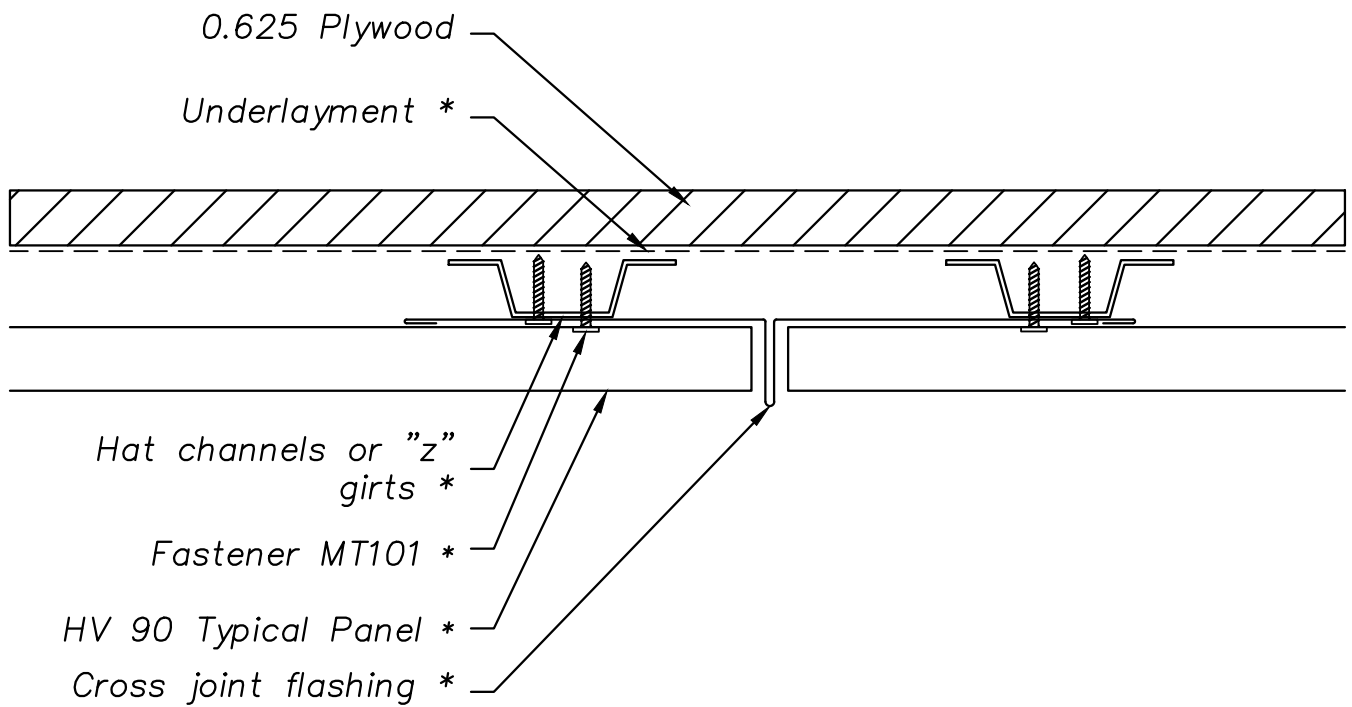
<div> METALTECH Global <small>a Forza Group Company</small> <small>DESIGNING STRENGTH</small></div>	UNLESS OTHERWISE SPECIFIED DIMENSIONS ARE IN INCHES		DRAWING NAME: HV 90 PANEL (ISOMETRIC)	REVISION NO: —	DATED CREATED: 04/13/2015
			DWG NO: MT_HV90WP_1002	CHECKED BY: THENDERSON	APPROVED BY: ESIMONSEN
	PROJECT NAME: GENERAL DETAILS				
	SCALE: NTS	SHEET NO: 2 OF 6	SIZE: A	TOLERANCES: ANGULAR ±1° LINEAR ±0.06	



NOTE:


Information and details are only a baseline for system and installation. Modification to meet project requirement is the responsibility of the designer, architect and contractor. MetalTech Global project staff are available to assist throughout the design and build process. © MetalTech Global. All rights reserved.

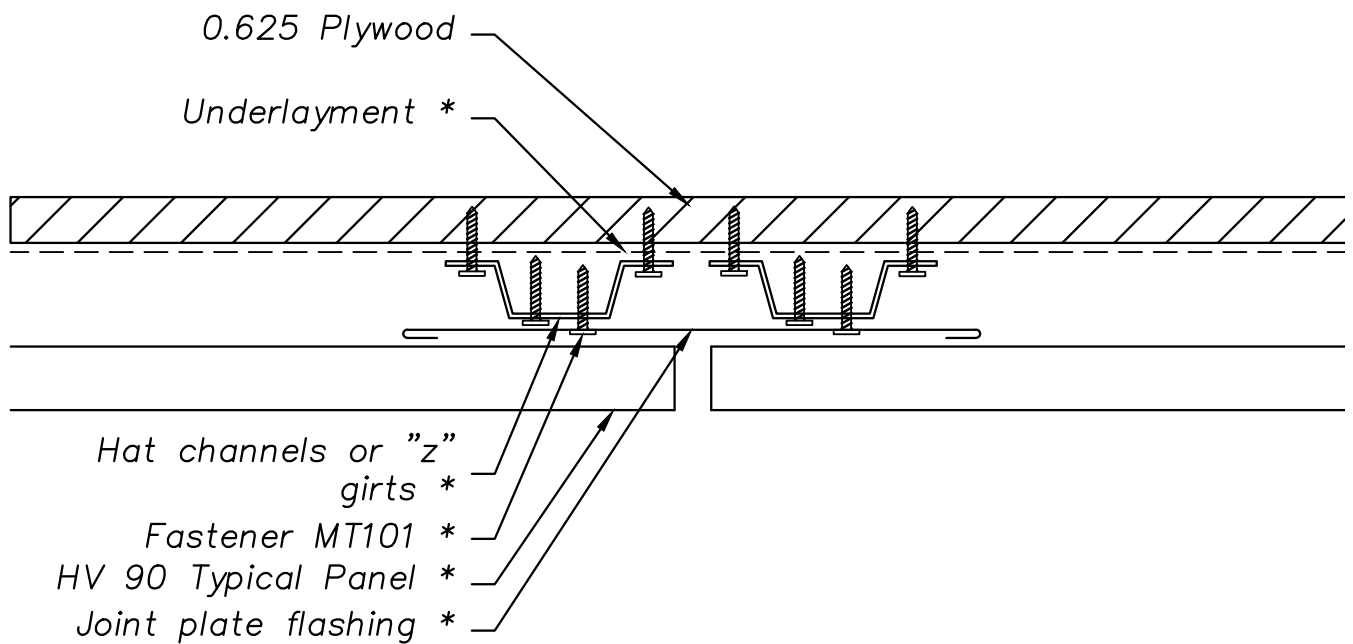
UNLESS OTHERWISE SPECIFIED DIMENSIONS ARE IN INCHES	DRAWING NAME: CROSS SEAM DETAIL – OPTION 1	REVISION NO: —	DATED CREATED: 04/13/2015
 METALTECH Global <small>a Forza Group Company</small> DESIGNING STRENGTH	DWG NO: MT_HV90WP_1003	CHECKED BY: THENDERSON	APPROVED BY: ESIMONSEN
	PROJECT NAME: GENERAL DETAILS		
	SCALE: NTS	SHEET NO: 3 OF 6	SIZE: A TOLERANCES: ANGULAR ±1° LINEAR ±0.06



NOTE:


Information and details are only a baseline for system and installation. Modification to meet project requirement is the responsibility of the designer, architect and contractor. MetalTech Global project staff are available to assist throughout the design and build process. © MetalTech Global. All rights reserved.

UNLESS OTHERWISE SPECIFIED DIMENSIONS ARE IN INCHES	DRAWING NAME: CROSS SEAM DETAIL – OPTION 2	REVISION NO: —	DATED CREATED: 04/13/2015
	DWG NO: MT_HV90WP_1004	CHECKED BY: THENDERSON	APPROVED BY: ESIMONSEN
	PROJECT NAME: GENERAL DETAILS		
SCALE: NTS	SHEET NO: 4 OF 6	SIZE: A	TOLERANCES: ANGULAR ±1° LINEAR ±0.06



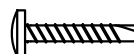
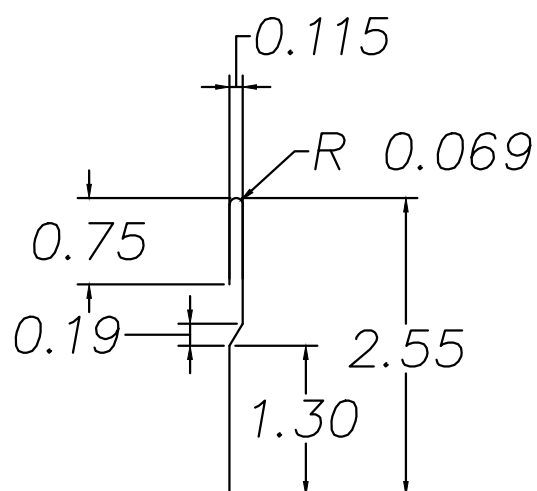
NOTE:

Information and details are only a baseline for system and installation. Modification to meet project requirement is the responsibility of the designer, architect and contractor. MetalTech Global project staff are available to assist throughout the design and build process. © MetalTech Global. All rights reserved.

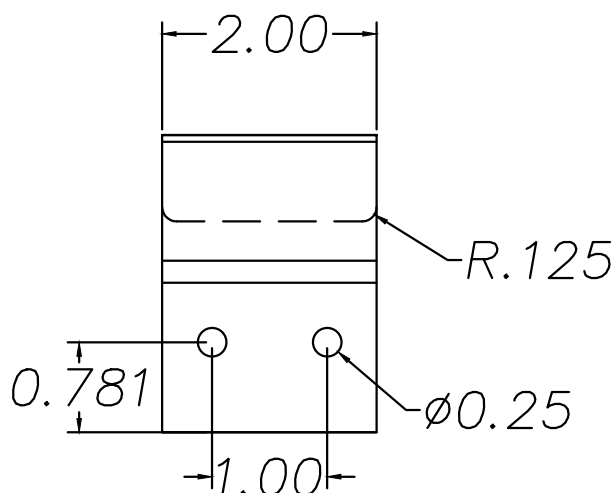
UNLESS OTHERWISE SPECIFIED DIMENSIONS ARE IN INCHES	DRAWING NAME: CROSS SEAM DETAIL – OPTION 3	REVISION NO: —	DATED CREATED: 04/13/2015
 METALTECH Global <small>a Forza Group Company</small> <small>DESIGNING STRENGTH</small>	DWG NO: MT_HV90WP_1005	CHECKED BY: THENDERSON	APPROVED BY: ESIMONSEN
	PROJECT NAME: GENERAL DETAILS		
	SCALE: NTS	SHEET NO: 5 OF 6	SIZE: A TOLERANCES: ANGULAR ±1° LINEAR ±0.06



MT101
Wood Applications




MT101SX3
Sheet Metal Applications



SS MT100 Flatlock Clip
Material is 24 gauge stainless steel

NOTE:

Information and details are only a baseline for system and installation. Modification to meet project requirement is the responsibility of the designer, architect and contractor. MetalTech Global project staff are available to assist throughout the design and build process. © MetalTech Global. All rights reserved.

UNLESS OTHERWISE SPECIFIED DIMENSIONS ARE IN INCHES	DRAWING NAME: FASTENERS	REVISION NO: —	DATED CREATED: 04/13/2015
	DWG NO: MT_HV90WP_1006	CHECKED BY: THENDERSON	APPROVED BY: ESIMONSEN
	PROJECT NAME: GENERAL DETAILS		
SCALE: NTS	SHEET NO: 6 OF 6	SIZE: A	TOLERANCES: ANGULAR ±1° LINEAR ±0.06

Parapet cap w/proroofting
and 3 degree min. slope *

Enkamat *

Continuous support angle *

Perforated insect screen *

Fastener MT101 *

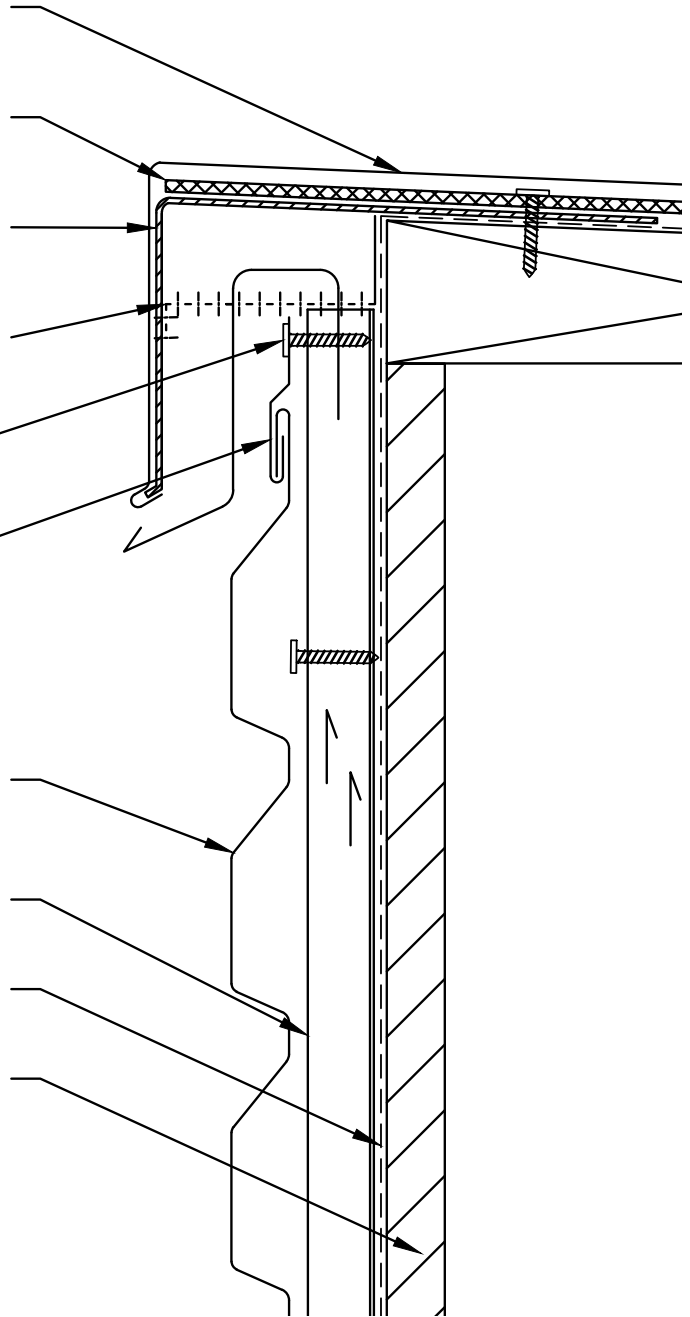
Flatlock clip MT100 *

HV 90 Typical Panels *

Hat channel or "z" girts *


Underlayment *

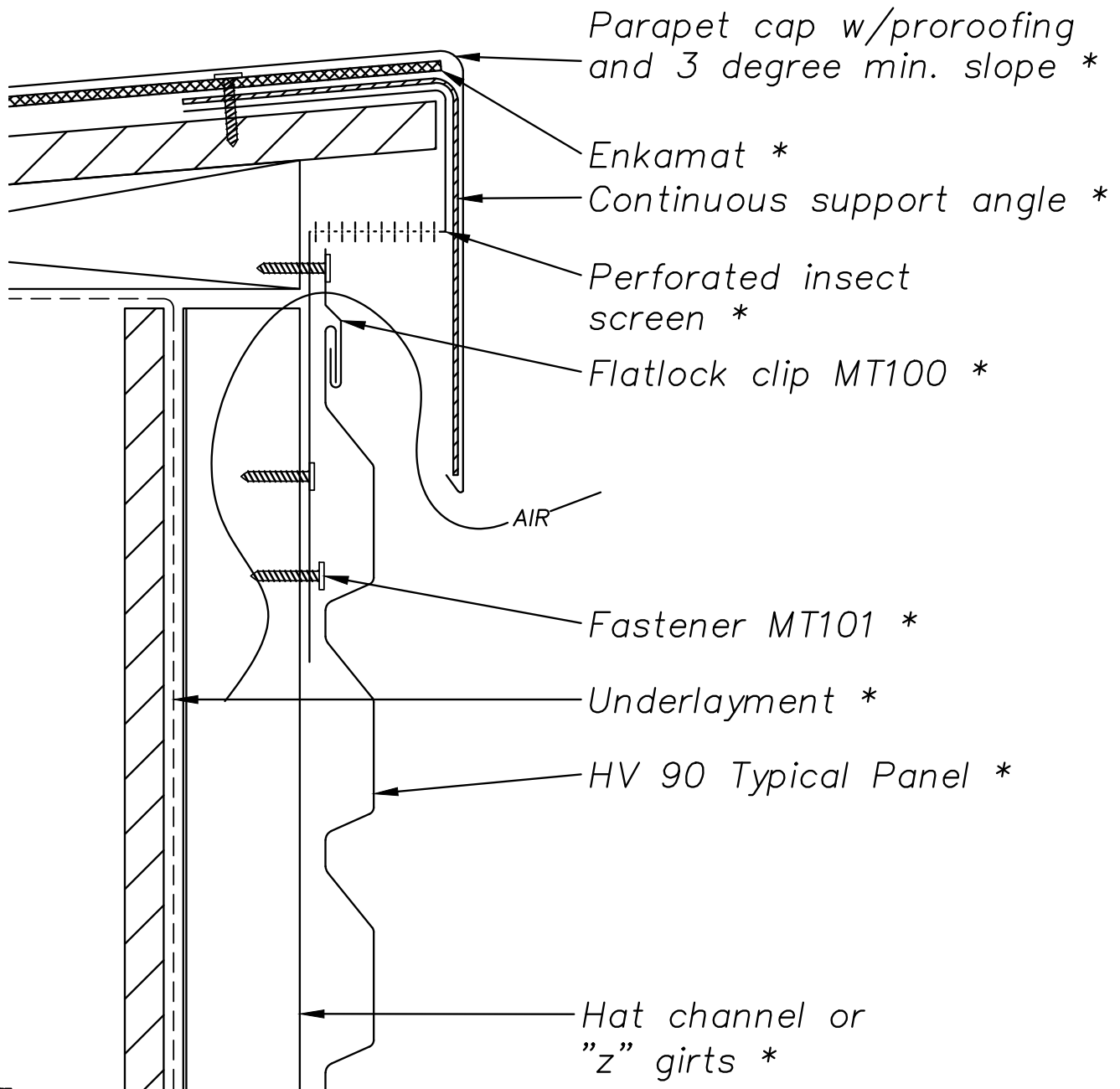
0.625 Plywood



NOTE:


Information and details are only a baseline for system and installation. Modification to meet project requirement is the responsibility of the designer, architect and contractor. MetalTech Global project staff are available to assist throughout the design and build process. © MetalTech Global. All rights reserved.

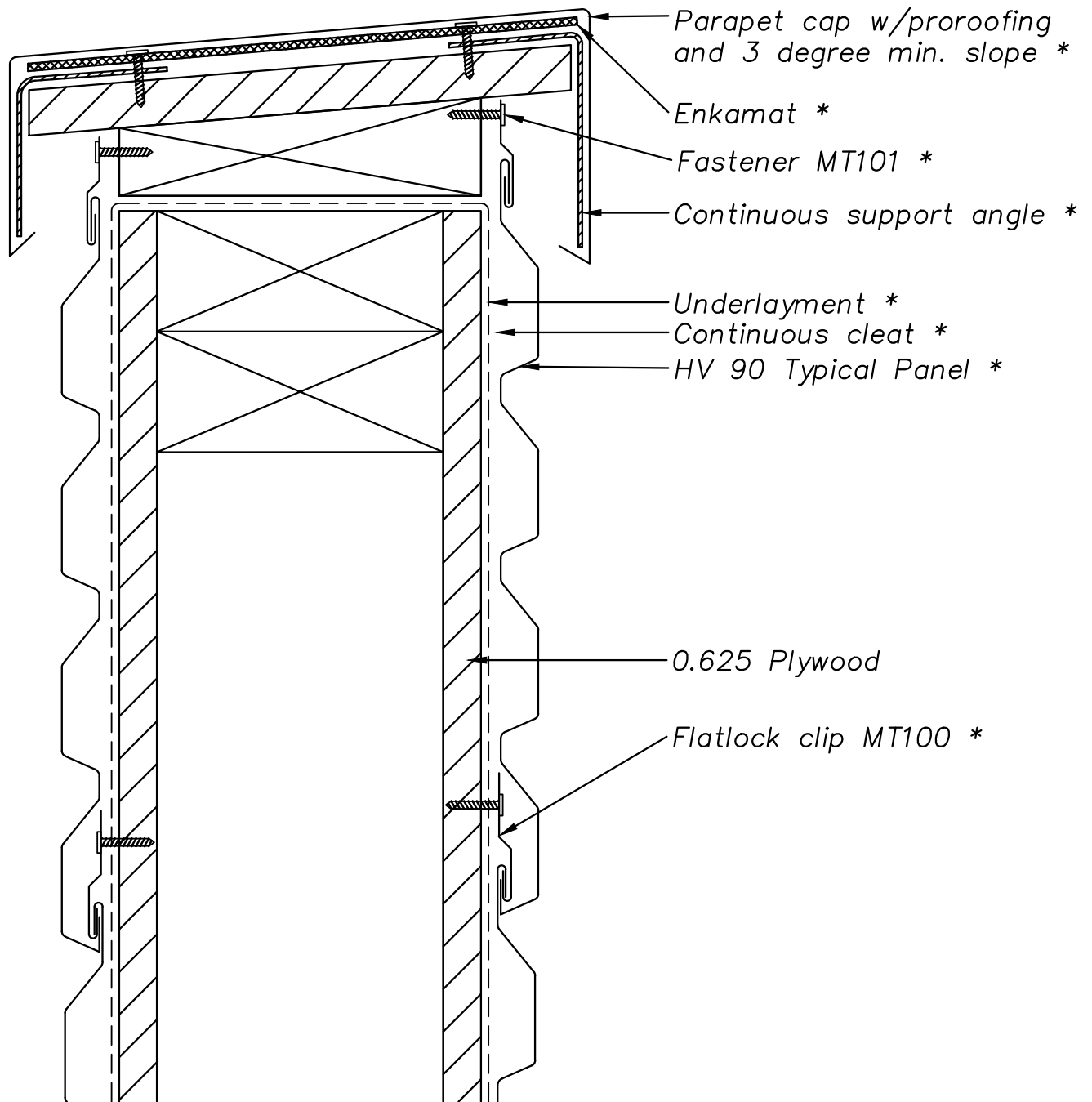
UNLESS OTHERWISE SPECIFIED DIMENSIONS ARE IN INCHES	DRAWING NAME: PARAPET DETAIL – OPTION 1	REVISION NO: —	DATED CREATED: 04/13/2015
	DWG NO: MT_HV90WP_1101	CHECKED BY: THENDERSON	APPROVED BY: ESIMONSEN
	PROJECT NAME: TOP OF WALL DETAILS		
SCALE: NTS	SHEET NO: 1 OF 5	SIZE: A	TOLERANCES: ANGULAR ±1° LINEAR ±0.06



NOTE:


Information and details are only a baseline for system and installation. Modification to meet project requirement is the responsibility of the designer, architect and contractor. MetalTech Global project staff are available to assist throughout the design and build process. © MetalTech Global. All rights reserved.

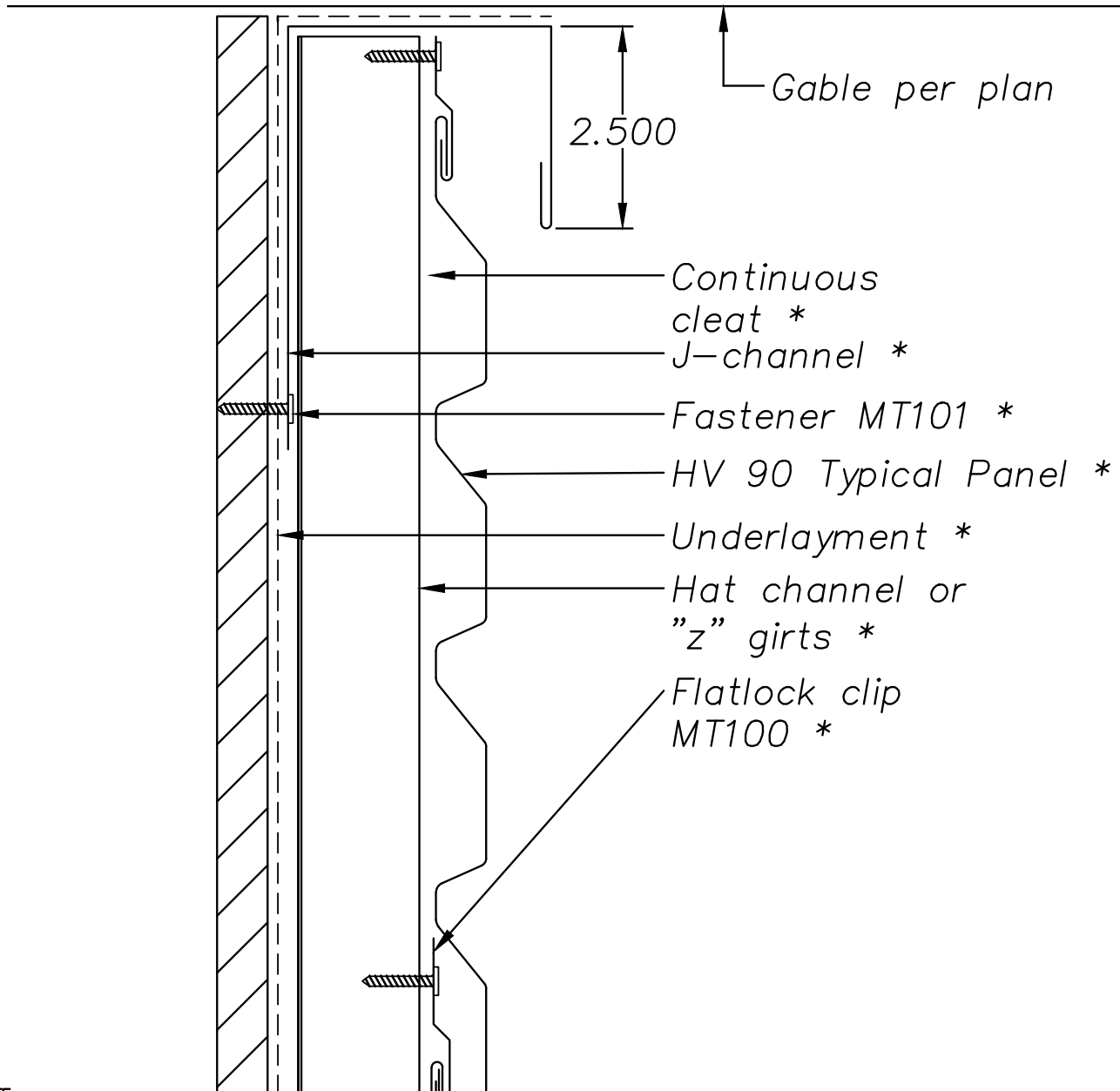
 METALTECH Global <small>a Forza Group Company</small> <small>DESIGNING STRENGTH</small>	DRAWING NAME: PARAPET DETAIL – OPTION 2		REVISION NO: –	DATED CREATED: 04/13/2015
	DWG NO: MT_HV90WP_1102		CHECKED BY: THENDERSON	APPROVED BY: ESIMONSEN
	PROJECT NAME: TOP OF WALL DETAILS			
	SCALE: NTS	SHEET NO: 2 OF 5	SIZE: A	TOLERANCES: ANGULAR ±1° LINEAR ±0.06



NOTE:


Information and details are only a baseline for system and installation. Modification to meet project requirement is the responsibility of the designer, architect and contractor. MetalTech Global project staff are available to assist throughout the design and build process. © MetalTech Global. All rights reserved.

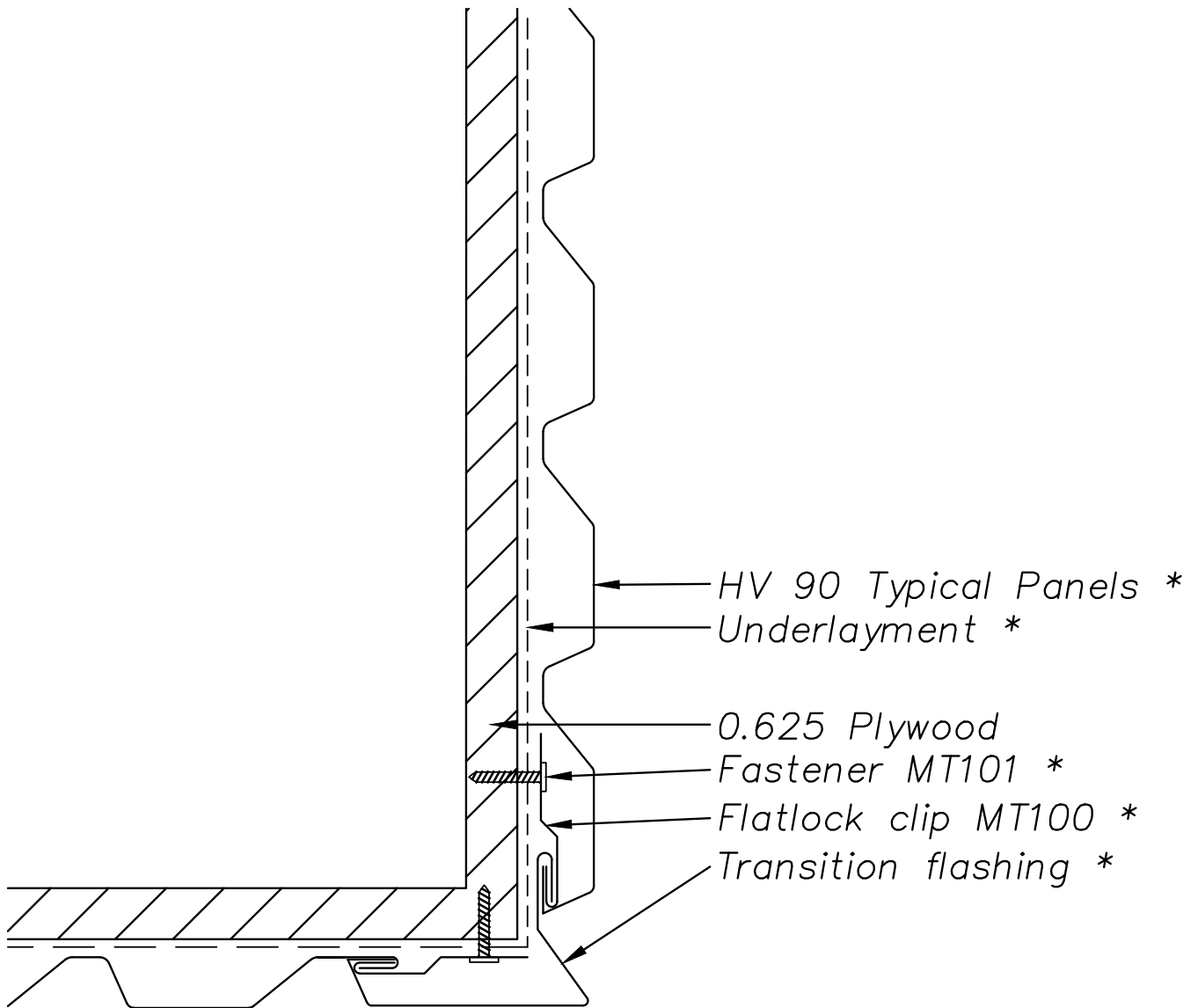
UNLESS OTHERWISE SPECIFIED DIMENSIONS ARE IN INCHES	DRAWING NAME: PARAPET DETAIL – OPTION 3	REVISION NO: —	DATED CREATED: 04/13/2015
 METALTECH Global <small>a Forza Group Company</small> DESIGNING STRENGTH	DWG NO: MT_HV90WP_1103	CHECKED BY: THENDERSON	APPROVED BY: ESIMONSEN
	PROJECT NAME: TOP OF WALL DETAILS		
SCALE: NTS	SHEET NO: 3 OF 5	SIZE: A	TOLERANCES: ANGULAR ±1° LINEAR ±0.06



NOTE:


Information and details are only a baseline for system and installation. Modification to meet project requirement is the responsibility of the designer, architect and contractor. MetalTech Global project staff are available to assist throughout the design and build process. © MetalTech Global. All rights reserved.

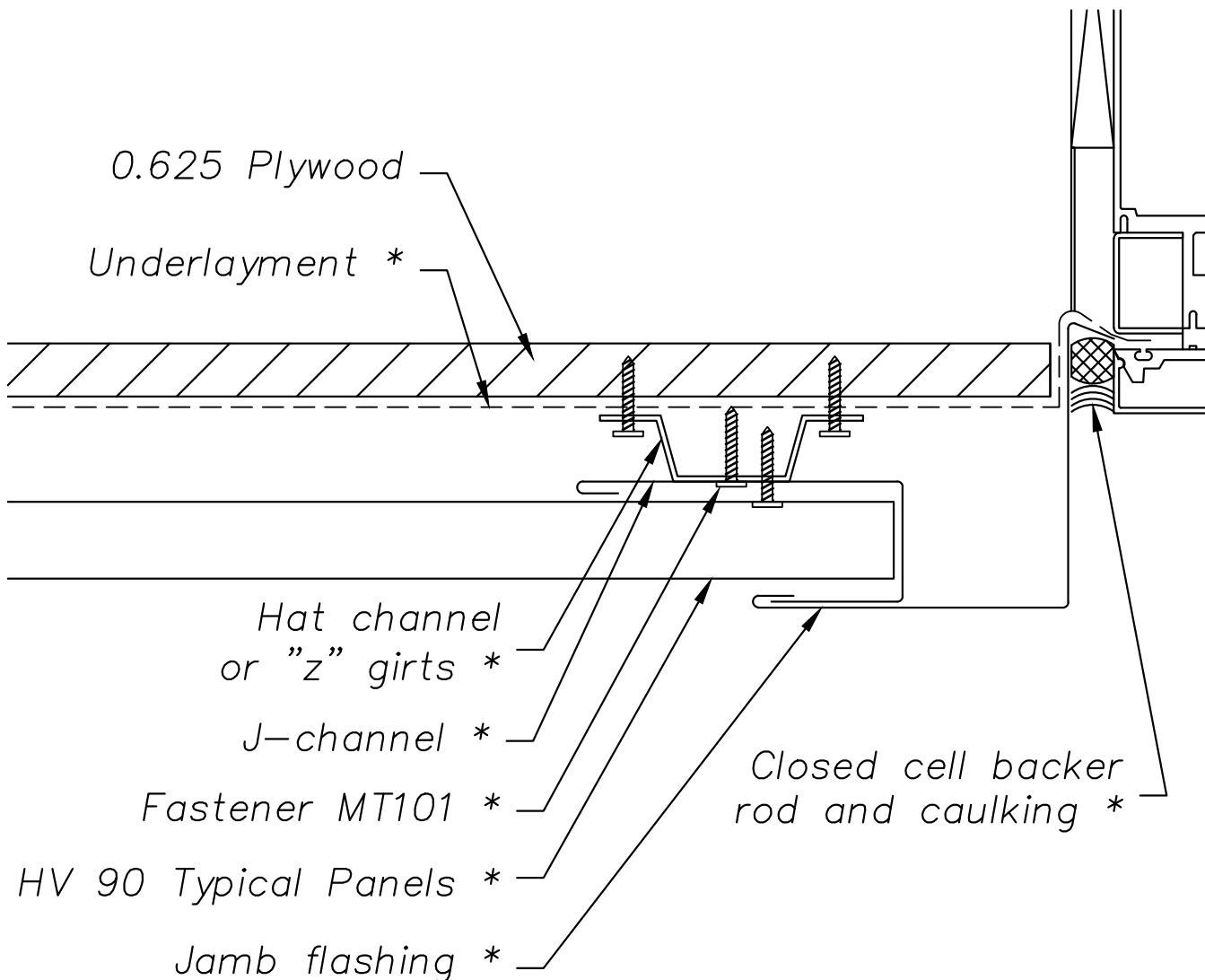
UNLESS OTHERWISE SPECIFIED DIMENSIONS ARE IN INCHES	DRAWING NAME: PARAPET DETAIL – OPTION 4	REVISION NO: —	DATED CREATED: 04/13/2015
 METALTECH Global <small>a Forza Group Company</small> DESIGNING STRENGTH	DWG NO: MT_HV90WP_1104	CHECKED BY: THENDERSON	APPROVED BY: ESIMONSEN
	PROJECT NAME: TOP OF WALL DETAILS		
SCALE: NTS	SHEET NO: 4 OF 5	SIZE: A	TOLERANCES: ANGULAR ±1° LINEAR ±0.06



NOTE:


Information and details are only a baseline for system and installation. Modification to meet project requirement is the responsibility of the designer, architect and contractor. MetalTech Global project staff are available to assist throughout the design and build process. © MetalTech Global. All rights reserved.

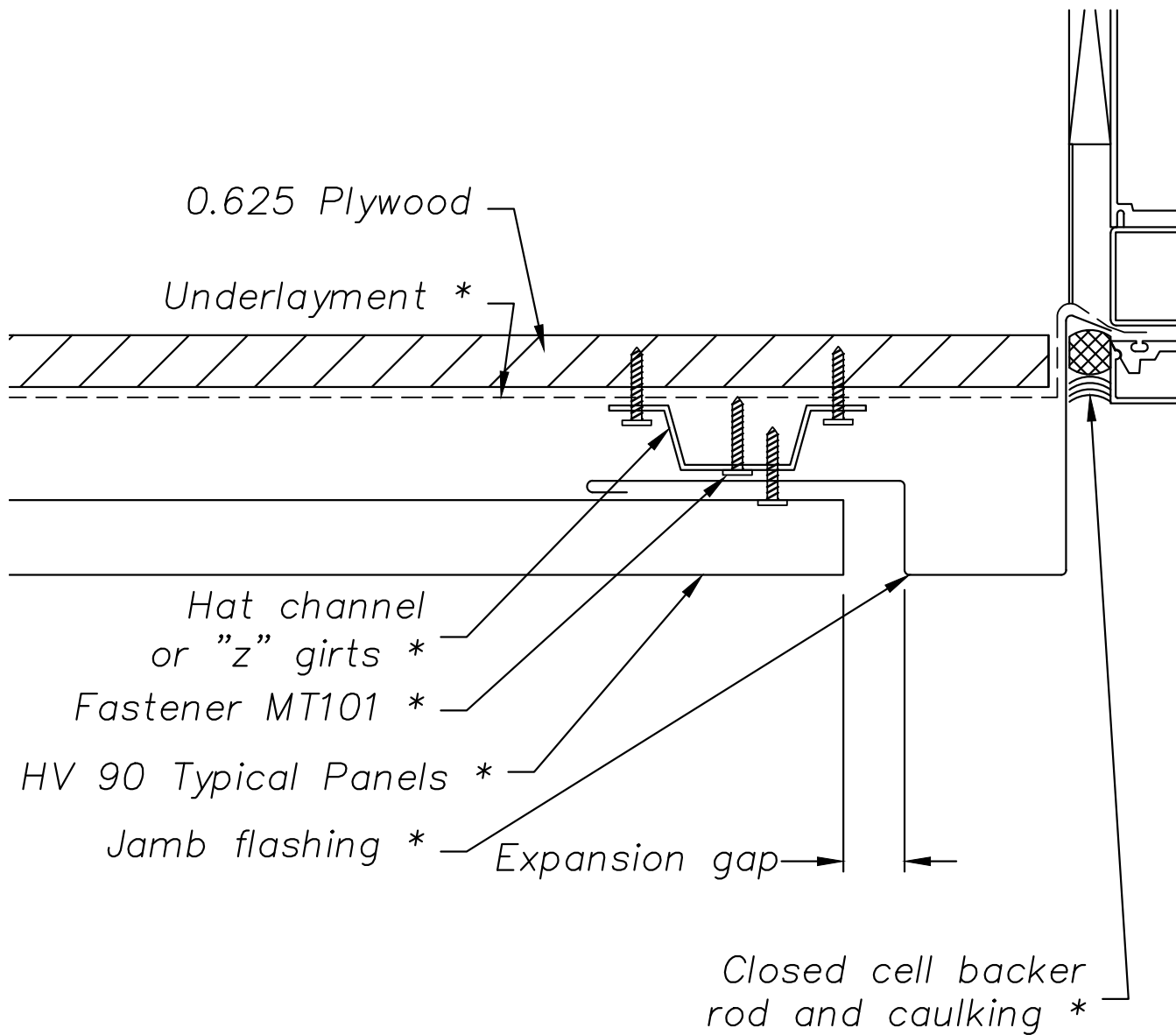
UNLESS OTHERWISE SPECIFIED DIMENSIONS ARE IN INCHES	DRAWING NAME: WALL TO SOFFIT TRANSITION	REVISION NO: —	DATED CREATED: 04/13/2015
 METALTECH Global <small>a Forza Group Company</small> DESIGNING STRENGTH	DWG NO: MT_HV90WP_1105	CHECKED BY: THENDERSON	APPROVED BY: ESIMONSEN
	PROJECT NAME: TOP OF WALL DETAILS		
	SCALE: NTS	SHEET NO: 5 OF 5	SIZE: A TOLERANCES: ANGULAR ±1° LINEAR ±0.06



NOTE:


Information and details are only a baseline for system and installation. Modification to meet project requirement is the responsibility of the designer, architect and contractor. MetalTech Global project staff are available to assist throughout the design and build process. © MetalTech Global. All rights reserved.

UNLESS OTHERWISE SPECIFIED DIMENSIONS ARE IN INCHES	DRAWING NAME: JAMB DETAIL – OPTION 1	REVISION NO: —	DATED CREATED: 04/13/2015
 METALTECH Global <small>a Forza Group Company</small> DESIGNING STRENGTH	DWG NO: MT_HV90WP_1201	CHECKED BY: THENDERSON	APPROVED BY: ESIMONSEN
	PROJECT NAME: WINDOW DETAILS		
SCALE: NTS	SHEET NO: 1 OF 7	SIZE: A	TOLERANCES: ANGULAR ±1° LINEAR ±0.06



NOTE:

Information and details are only a baseline for system and installation. Modification to meet project requirement is the responsibility of the designer, architect and contractor. MetalTech Global project staff are available to assist throughout the design and build process. © MetalTech Global. All rights reserved.

UNLESS OTHERWISE SPECIFIED DIMENSIONS ARE IN INCHES	DRAWING NAME: JAMB DETAIL – OPTION 2	REVISION NO: —	DATED CREATED: 04/13/2015
	DWG NO: MT_HV90WP_1202	CHECKED BY: THENDERSON	APPROVED BY: ESIMONSEN
	PROJECT NAME: WINDOW DETAILS		
SCALE: NTS	SHEET NO: 2 OF 7	SIZE: A	TOLERANCES: ANGULAR ±1° LINEAR ±0.06

HV 90 Typical Panel *

Hat channel or "z"
girts *

Underlayment *

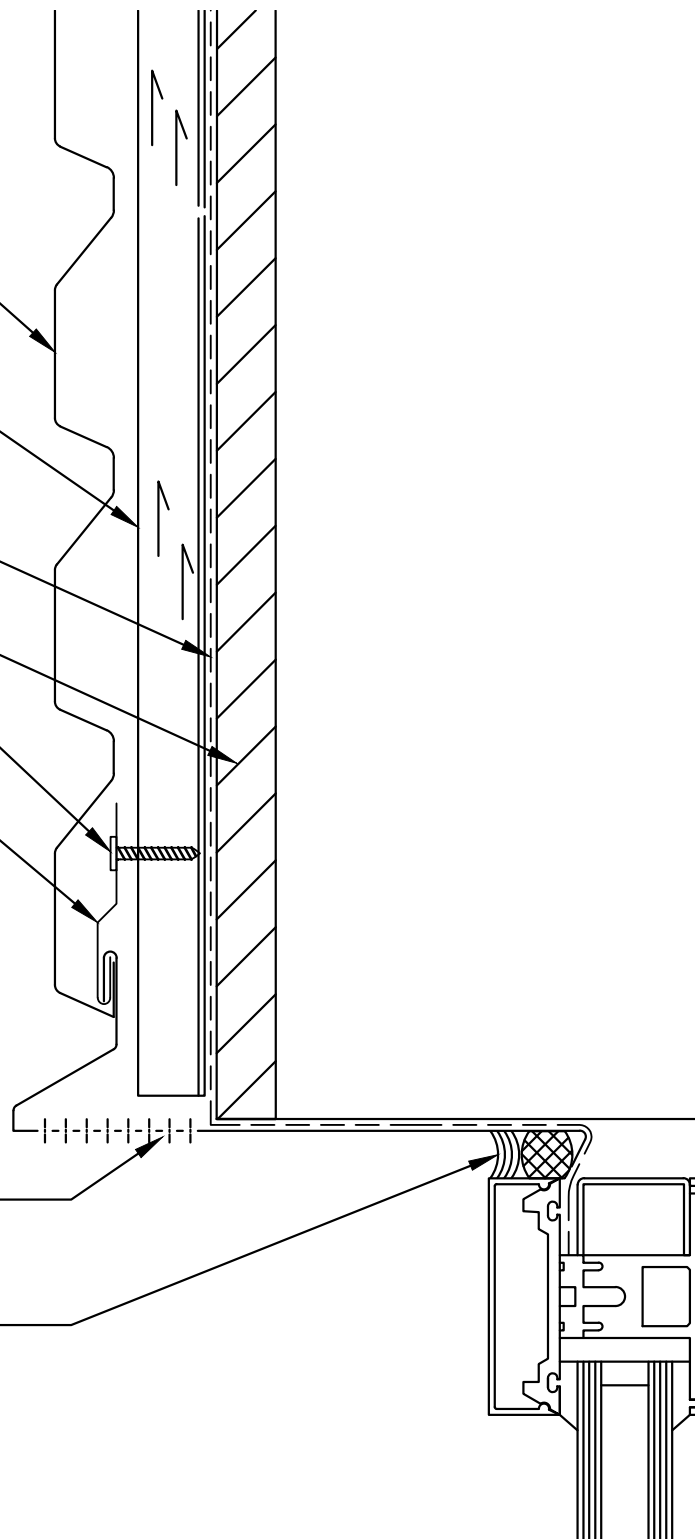
0.625 Plywood

Fastener MT101 *

Flatlock clip MT100 *

Perforated head
flashing *

Closed cell backer
rod and caulking *



NOTE:

Information and details are only a baseline for system and installation. Modification to meet project requirement is the responsibility of the designer, architect and contractor. MetalTech Global project staff are available to assist throughout the design and build process. © MetalTech Global. All rights reserved.

UNLESS OTHERWISE SPECIFIED
DIMENSIONS ARE IN INCHES

DRAWING NAME:
HEAD DETAIL – OPTION 1

REVISION NO:
—

DATED CREATED:
04/13/2015



DWG NO:
MT_HV90WP_1203

CHECKED BY:
THENDERSON

APPROVED BY:
ESIMONSEN

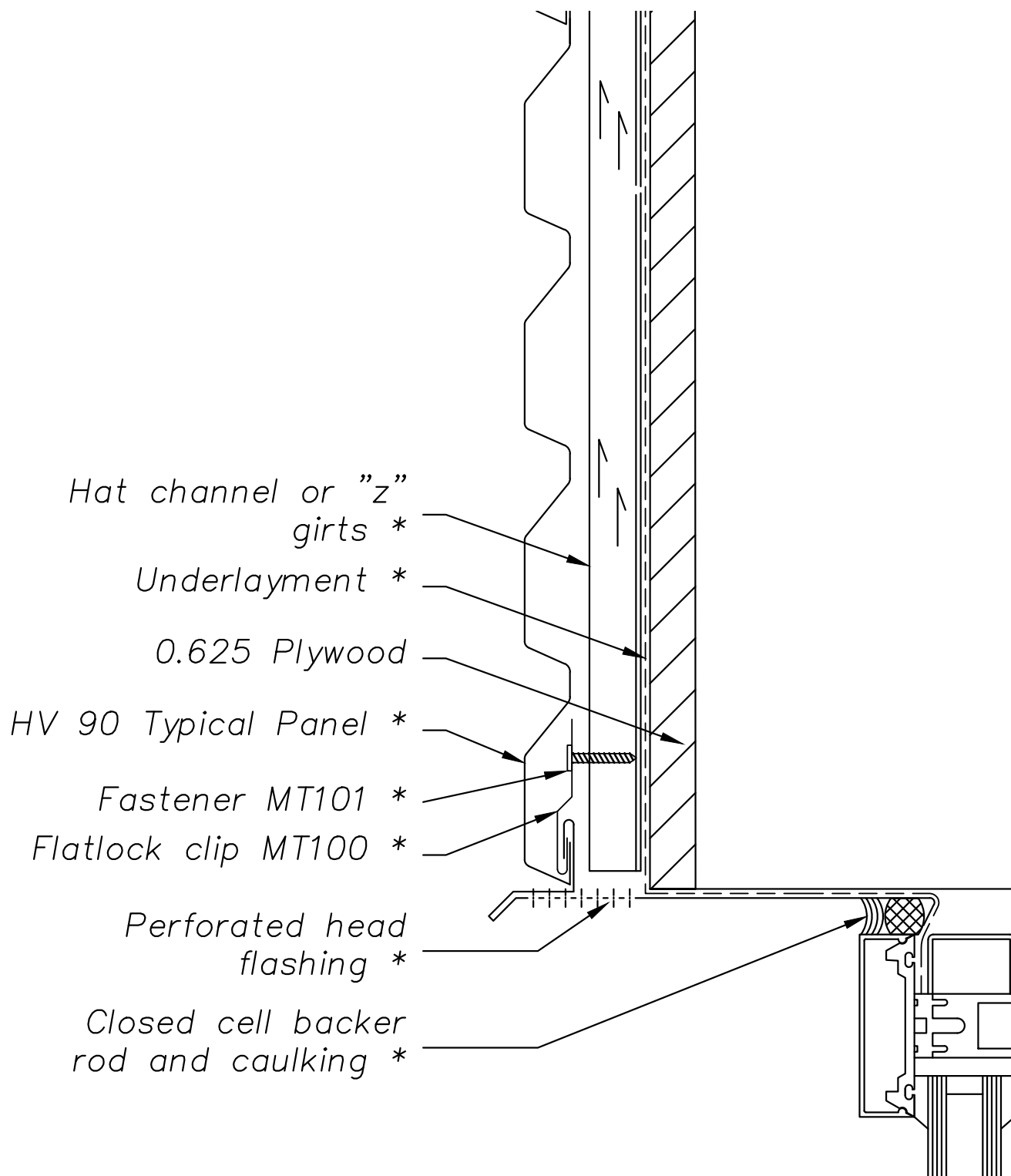
PROJECT NAME:
WINDOW DETAILS

SCALE:
NTS

SHEET NO:
3 OF 7


SIZE:
A

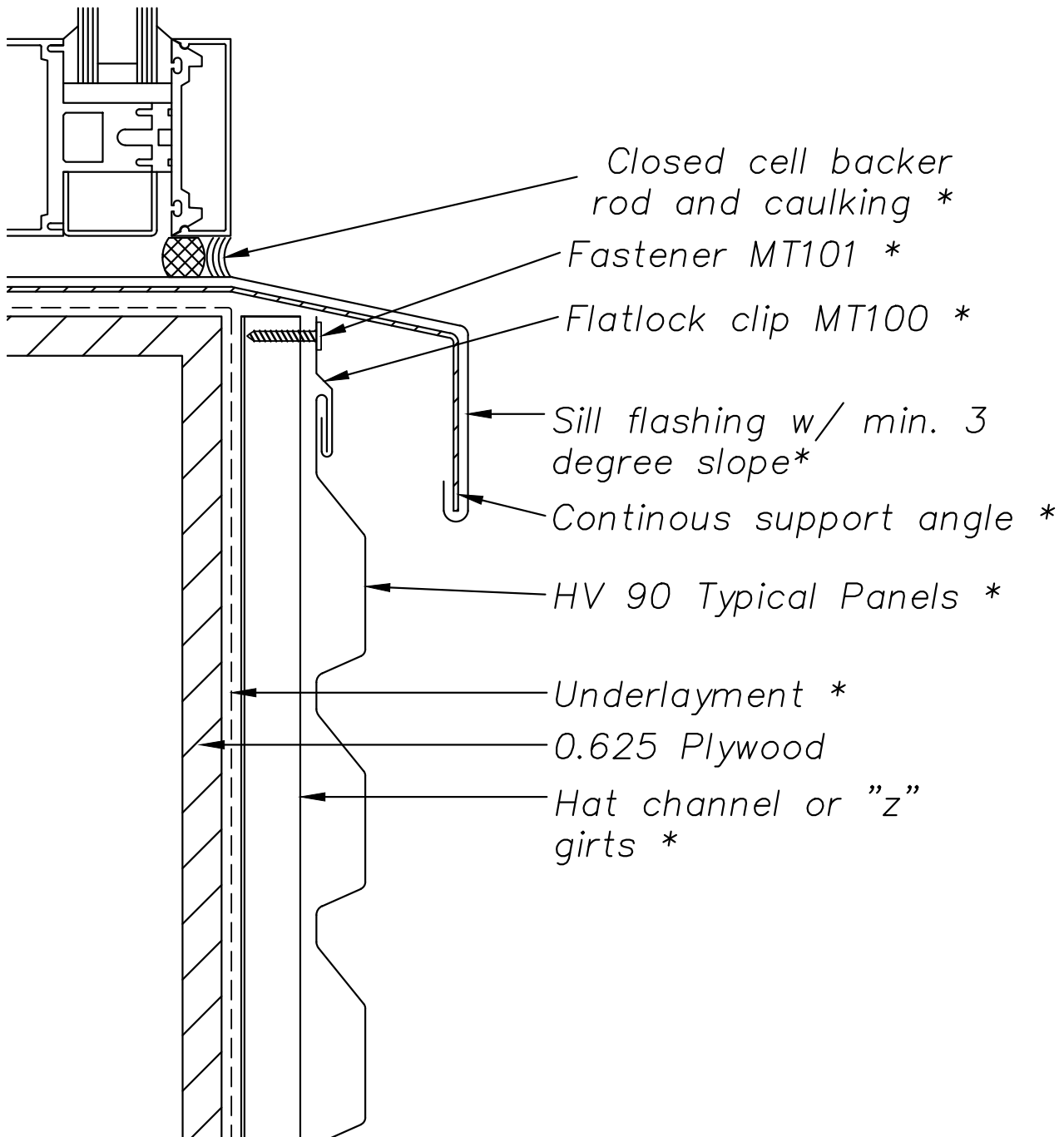
TOLERANCES:
ANGULAR $\pm 1^\circ$ LINEAR ± 0.06



NOTE:


Information and details are only a baseline for system and installation. Modification to meet project requirement is the responsibility of the designer, architect and contractor. MetalTech Global project staff are available to assist throughout the design and build process. © MetalTech Global. All rights reserved.

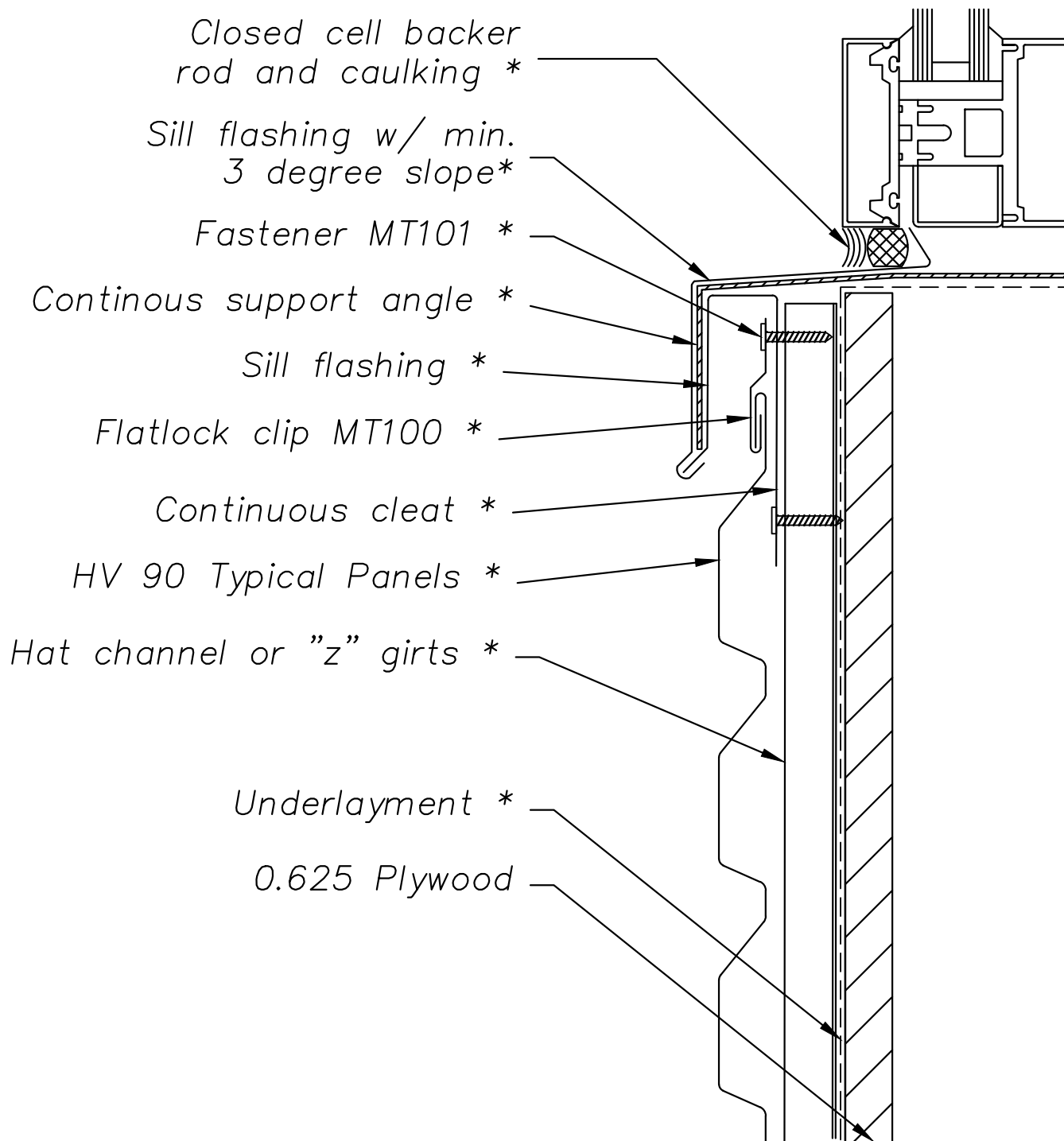
UNLESS OTHERWISE SPECIFIED DIMENSIONS ARE IN INCHES	DRAWING NAME: HEAD DETAIL – OPTION 2	REVISION NO: —	DATED CREATED: 04/13/2015
	DWG NO: MT_HV90WP_1204	CHECKED BY: THENDERSON	APPROVED BY: ESIMONSEN
	PROJECT NAME: WINDOW DETAILS		
SCALE: NTS	SHEET NO: 4 OF 7	SIZE: A	TOLERANCES: ANGULAR $\pm 1^\circ$ LINEAR ± 0.06



NOTE:


Information and details are only a baseline for system and installation. Modification to meet project requirement is the responsibility of the designer, architect and contractor. MetalTech Global project staff are available to assist throughout the design and build process. © MetalTech Global. All rights reserved.

UNLESS OTHERWISE SPECIFIED DIMENSIONS ARE IN INCHES	DRAWING NAME: SILL DETAIL – OPTION 1	REVISION NO: —	DATED CREATED: 04/13/2015
	DWG NO: MT_HV90WP_1205	CHECKED BY: THENDERSON	APPROVED BY: ESIMONSEN
	PROJECT NAME: WINDOW DETAILS		
SCALE: NTS	SHEET NO: 5 OF 7	SIZE: A	TOLERANCES: ANGULAR $\pm 1^\circ$ LINEAR ± 0.06



NOTE:

Information and details are only a baseline for system and installation. Modification to meet project requirement is the responsibility of the designer, architect and contractor. MetalTech Global project staff are available to assist throughout the design and build process. © MetalTech Global. All rights reserved.

UNLESS OTHERWISE SPECIFIED DIMENSIONS ARE IN INCHES	DRAWING NAME: SILL DETAIL – OPTION 2	REVISION NO: —	DATED CREATED: 04/13/2015
 METALTECH Global <small>a Forza Group Company</small> DESIGNING STRENGTH	DWG NO: MT_HV90WP_1206	CHECKED BY: THENDERSON	APPROVED BY: ESIMONSEN
	PROJECT NAME: WINDOW DETAILS		
SCALE: NTS	SHEET NO: 6 OF 7	SIZE: A	TOLERANCES: ANGULAR ±1° LINEAR ±0.06

Closed cell backer
rod and caulking *

Sill flashing w/ min.
3 degree slope*

Continous support
angle *

Perforated Z to allow
for ventilation *

Fastener MT101 *

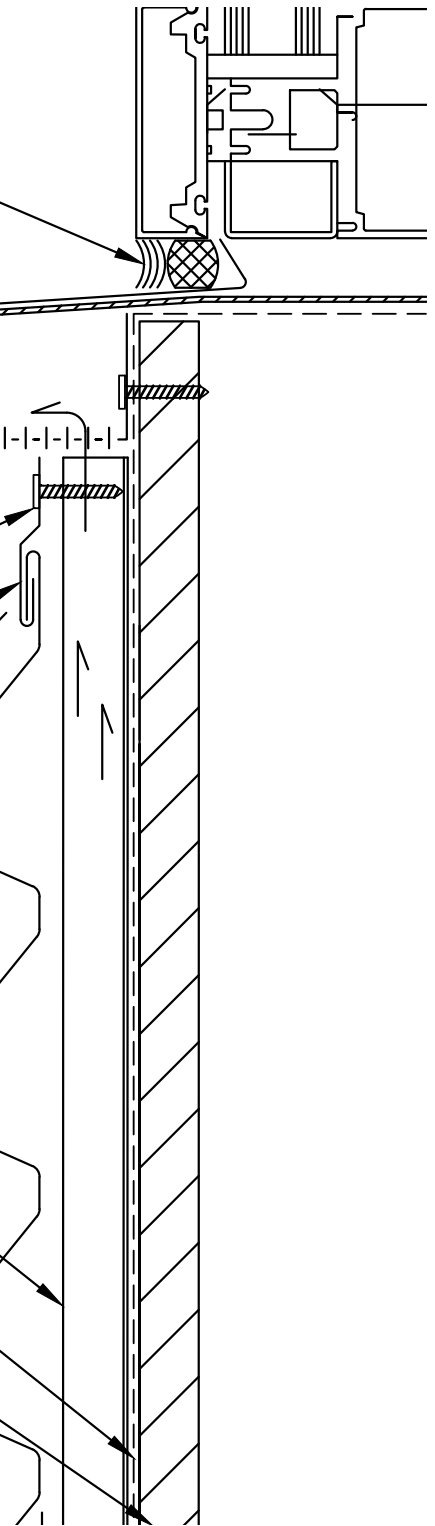
Flatlock clip MT100 *

HV 90 Typical Panels *

Hat channel or "z" girts *

Underlayment *

0.625 Plywood



NOTE:

Information and details are only a baseline for system and installation. Modification to meet project requirement is the responsibility of the designer, architect and contractor. MetalTech Global project staff are available to assist throughout the design and build process. © MetalTech Global. All rights reserved.

UNLESS OTHERWISE SPECIFIED
DIMENSIONS ARE IN INCHES

DRAWING NAME:
SILL DETAIL – OPTION 3

REVISION NO:
—

DATED CREATED:
04/13/2015



DWG NO:
MT_HV90WP_1207

CHECKED BY:
THENDERSON

APPROVED BY:
ESIMONSEN

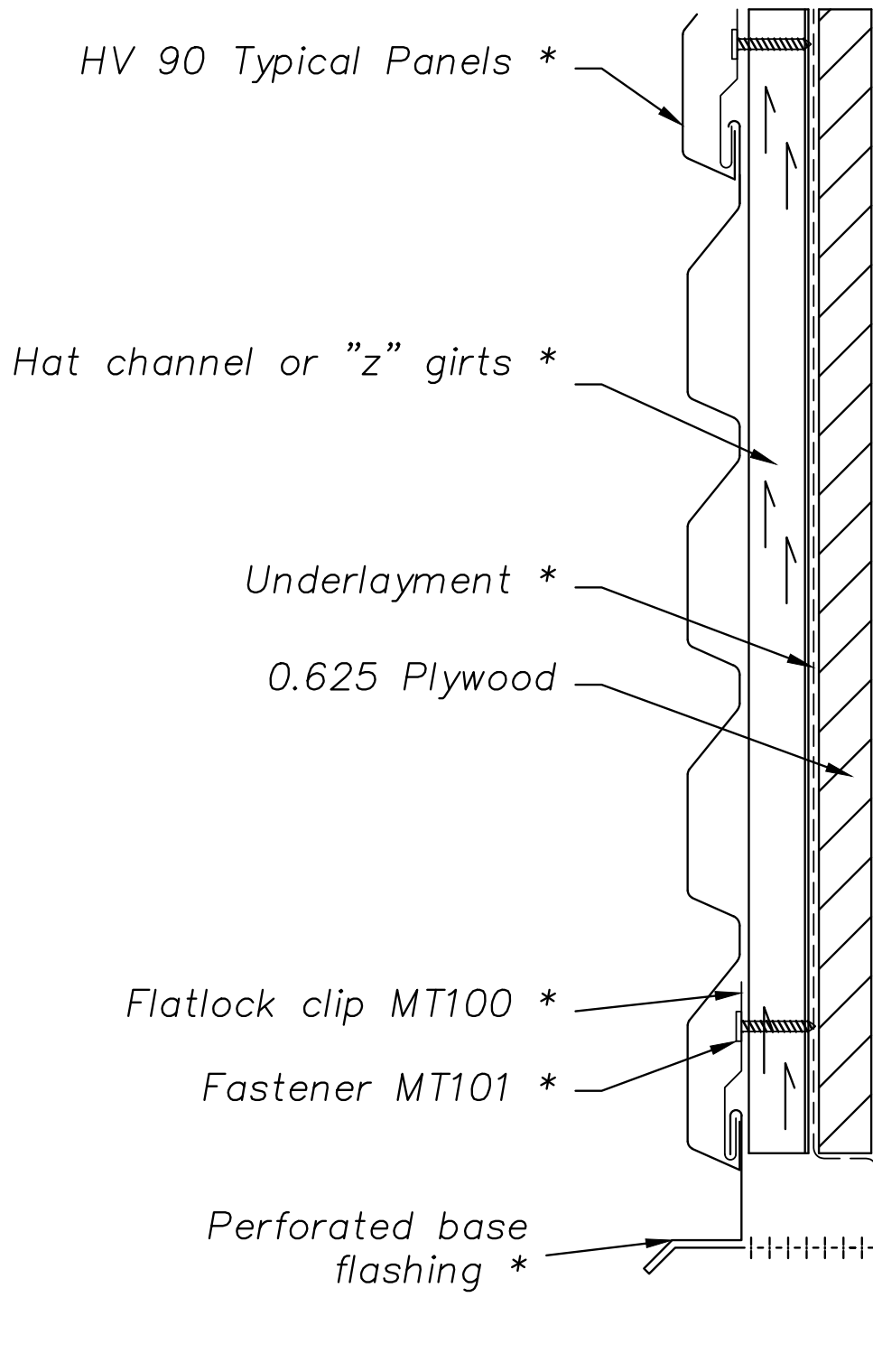
PROJECT NAME:
WINDOW DETAILS

SCALE:
NTS

SHEET NO:
7 OF 7


SIZE:
A

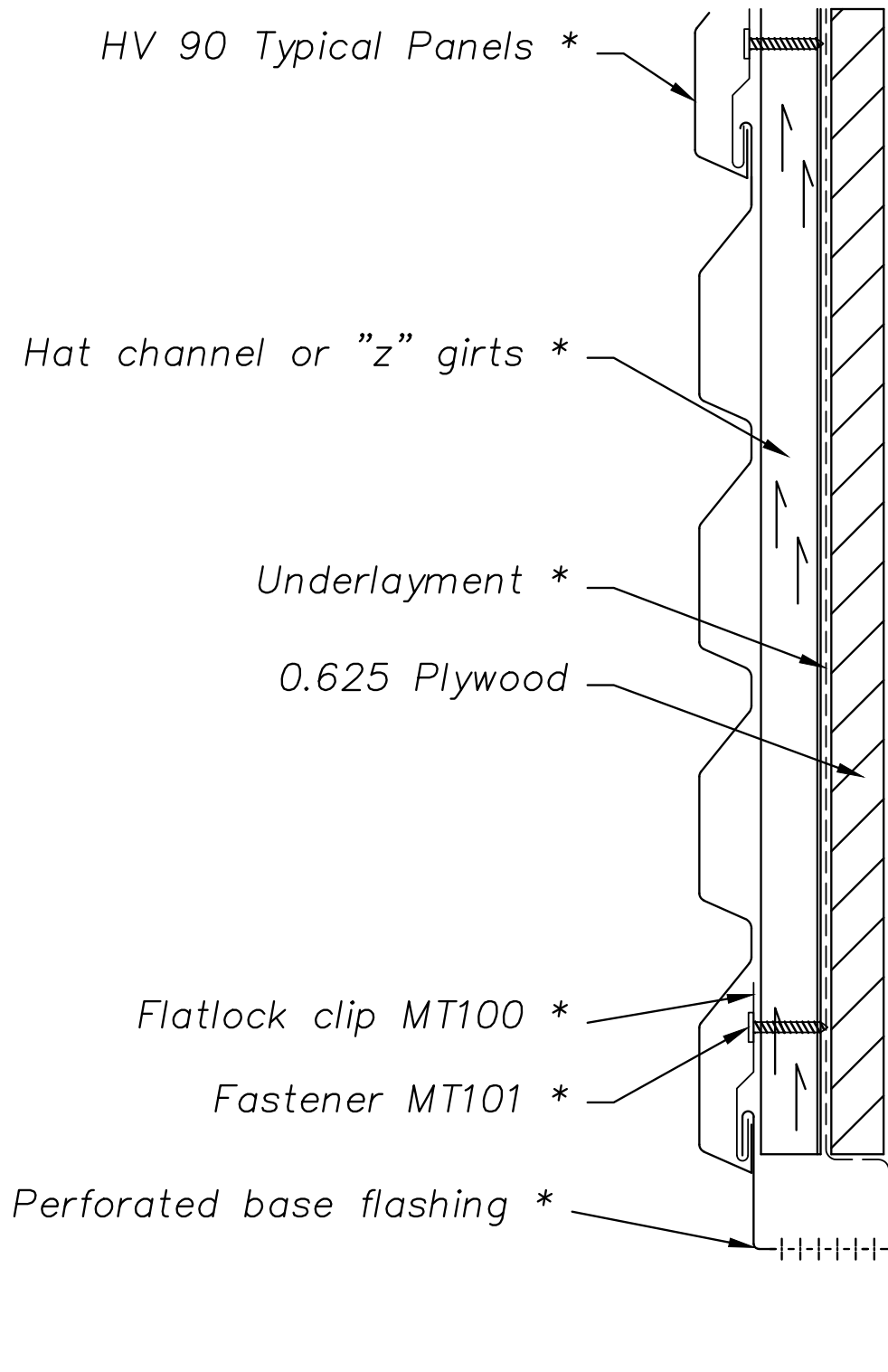
TOLERANCES:
ANGULAR $\pm 1^\circ$ LINEAR ± 0.06



NOTE:


Information and details are only a baseline for system and installation. Modification to meet project requirement is the responsibility of the designer, architect and contractor. MetalTech Global project staff are available to assist throughout the design and build process. © MetalTech Global. All rights reserved.

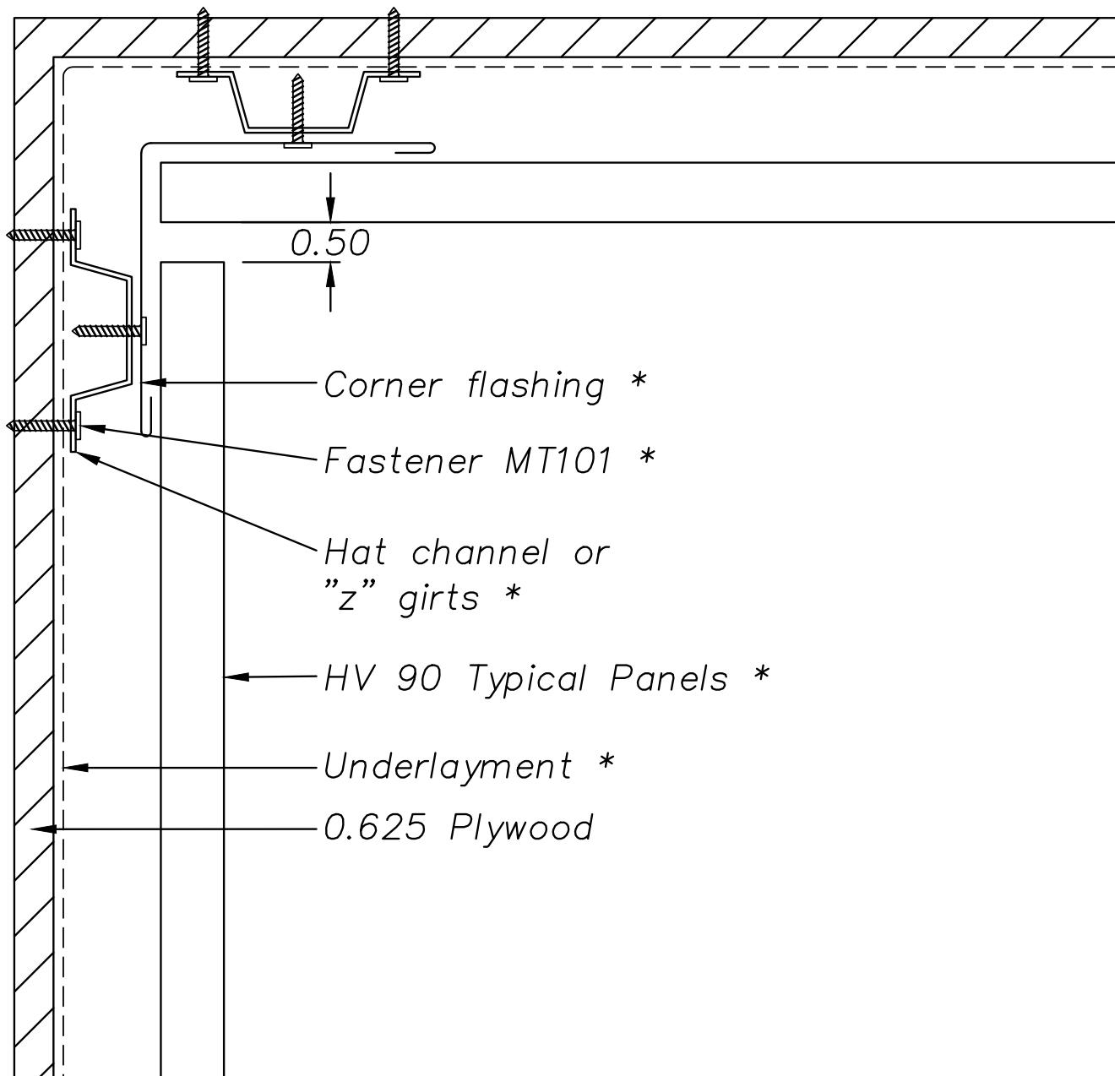
UNLESS OTHERWISE SPECIFIED DIMENSIONS ARE IN INCHES	DRAWING NAME: BASE DETAIL – OPTION 1	REVISION NO: —	DATED CREATED: 04/13/2015
 METALTECH Global <small>a Forza Group Company</small> DESIGNING STRENGTH	DWG NO: MT_HV90WP_1301	CHECKED BY: THENDERSON	APPROVED BY: ESIMONSEN
	PROJECT NAME: BOTTOM OF WALL DETAILS		
SCALE: NTS	SHEET NO: 1 OF 2	SIZE: A	TOLERANCES: ANGULAR ±1° LINEAR ±0.06



NOTE:

Information and details are only a baseline for system and installation. Modification to meet project requirement is the responsibility of the designer, architect and contractor. MetalTech Global project staff are available to assist throughout the design and build process. © MetalTech Global. All rights reserved.

<p>UNLESS OTHERWISE SPECIFIED DIMENSIONS ARE IN INCHES</p> <p> METALTECH Global a Forza Group Company DESIGNING STRENGTH</p>	DRAWING NAME: BASE DETAIL – OPTION 2		REVISION NO: —	DATED CREATED: 04/13/2015
	DWG NO: MT_HV90WP_1302		CHECKED BY: THENDERSON	APPROVED BY: ESIMONSEN
	PROJECT NAME: BOTTOM OF WALL DETAILS			
	SCALE: NTS	SHEET NO: 2 OF 2	SIZE: A	TOLERANCES: ANGULAR ±1° LINEAR ±0.06



NOTE:

Information and details are only a baseline for system and installation. Modification to meet project requirement is the responsibility of the designer, architect and contractor. MetalTech Global project staff are available to assist throughout the design and build process. © MetalTech Global. All rights reserved.

UNLESS OTHERWISE SPECIFIED
DIMENSIONS ARE IN INCHES



METALTECH Global
a Forza Group Company
DESIGNING STRENGTH

DRAWING NAME:
INTERIOR CORNER – OPTION 1

REVISION NO:
—

DATED CREATED:
04/13/2015

DWG NO:
MT_HV90WP_1401

CHECKED BY:
THENDERSON

APPROVED BY:
ESIMONSEN

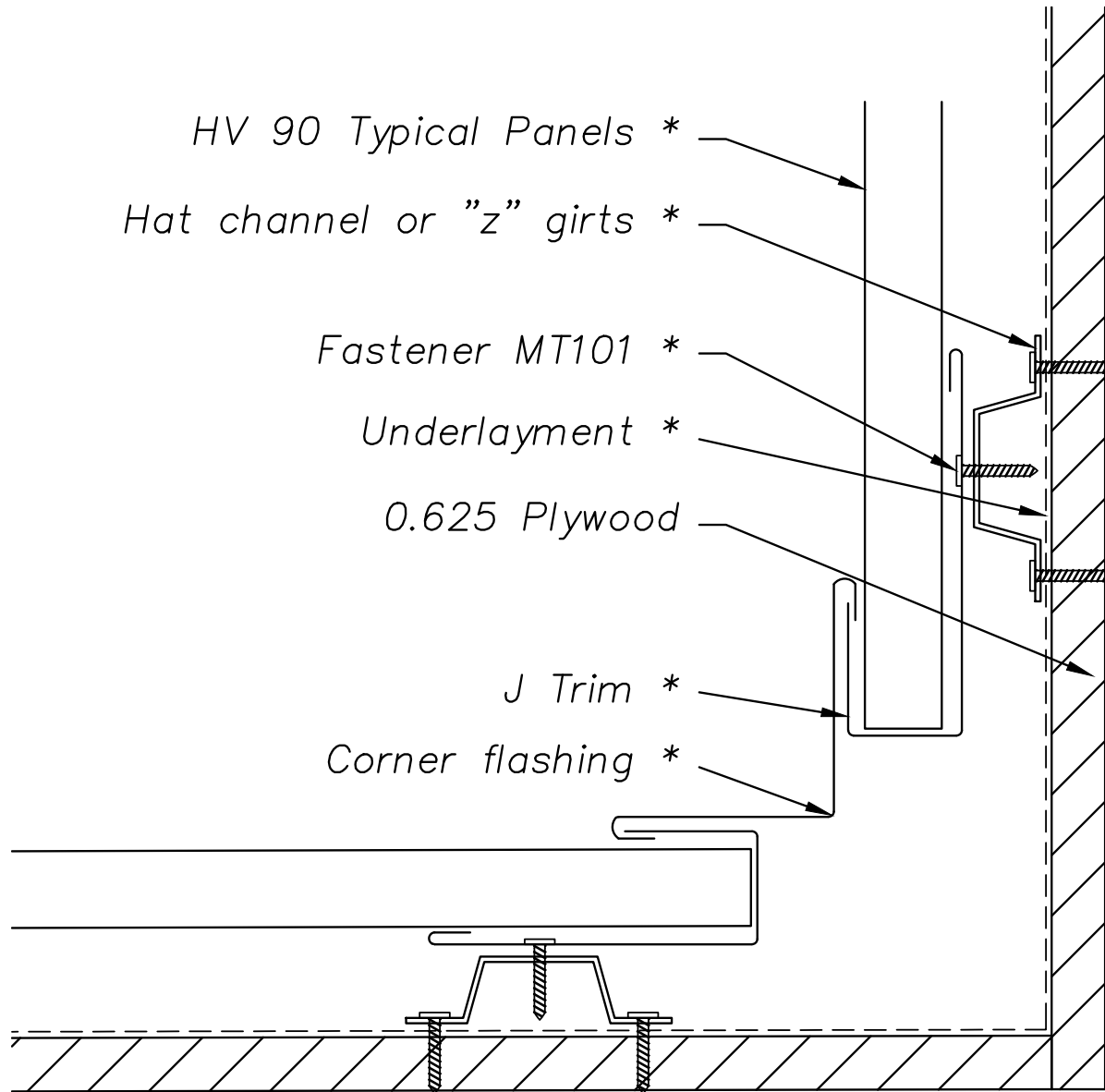
PROJECT NAME:
INTERIOR DETAILS

SCALE:
NTS

SHEET NO:
1 OF 3


SIZE:
A

TOLERANCES:
ANGULAR $\pm 1^\circ$ LINEAR ± 0.06



NOTE:

Information and details are only a baseline for system and installation. Modification to meet project requirement is the responsibility of the designer, architect and contractor. MetalTech Global project staff are available to assist throughout the design and build process. © MetalTech Global. All rights reserved.

UNLESS OTHERWISE SPECIFIED DIMENSIONS ARE IN INCHES	DRAWING NAME: INTERIOR CORNER – OPTION 2	REVISION NO: —	DATED CREATED: 04/13/2015
 METALTECH Global <small>a Forza Group Company</small> <small>DESIGNING STRENGTH</small>	DWG NO: MT_HV90WP_1402	CHECKED BY: THENDERSON	APPROVED BY: ESIMONSEN
	PROJECT NAME: INTERIOR DETAILS		
SCALE: NTS	SHEET NO: 2 OF 3	SIZE: A	TOLERANCES: ANGULAR ±1° LINEAR ±0.06

HV 90 Typical Panels *

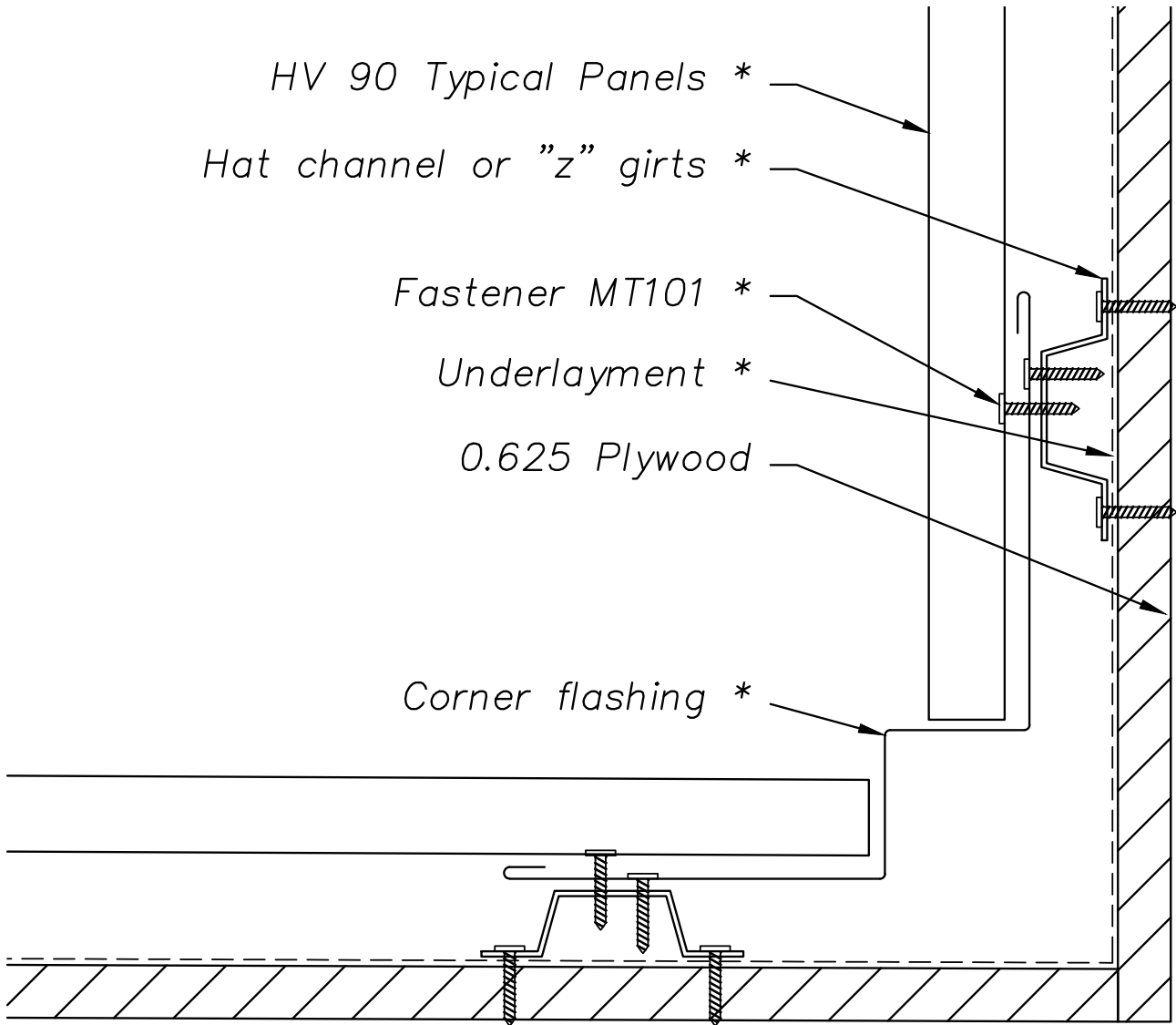
Hat channel or "z" girts *

Fastener MT101 *

Underlayment *

0.625 Plywood

Corner flashing *



NOTE:

Information and details are only a baseline for system and installation. Modification to meet project requirement is the responsibility of the designer, architect and contractor. MetalTech Global project staff are available to assist throughout the design and build process. © MetalTech Global. All rights reserved.

UNLESS OTHERWISE SPECIFIED
DIMENSIONS ARE IN INCHES

DRAWING NAME:
INTERIOR CORNER – OPTION 3

REVISION NO:
—

DATED CREATED:
04/13/2015



DWG NO:
MT_HV90WP_1403

CHECKED BY:
THENDERSON

APPROVED BY:
ESIMONSEN

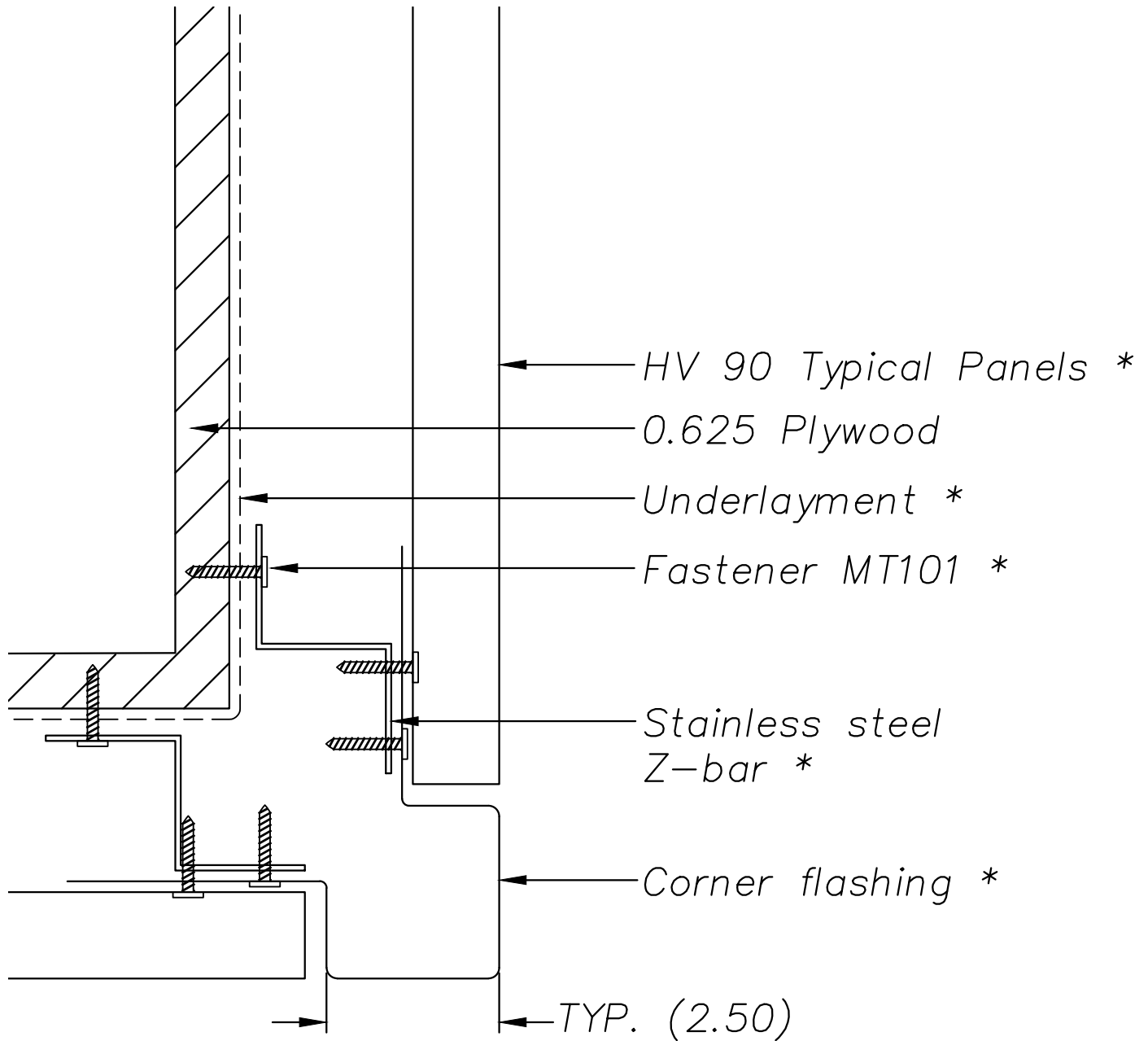
PROJECT NAME:
INTERIOR DETAILS

SCALE:
NTS

SHEET NO:
3 OF 3


SIZE:
A

TOLERANCES:
ANGULAR $\pm 1^\circ$ LINEAR ± 0.06



NOTE:

Information and details are only a baseline for system and installation. Modification to meet project requirement is the responsibility of the designer, architect and contractor. MetalTech Global project staff are available to assist throughout the design and build process. © MetalTech Global. All rights reserved.

<p>UNLESS OTHERWISE SPECIFIED DIMENSIONS ARE IN INCHES</p> <p> METALTECH Global a Forza Group Company DESIGNING STRENGTH</p>	DRAWING NAME: EXTERIOR CORNER – OPTION 1		REVISION NO: —	DATED CREATED: 04/13/2015
	DWG NO: MT_HV90WP_1501		CHECKED BY: THENDERSON	APPROVED BY: ESIMONSEN
	PROJECT NAME: EXTERIOR DETAILS			
	SCALE: NTS	SHEET NO: 1 OF 3	SIZE: A	TOLERANCES: ANGULAR $\pm 1^\circ$ LINEAR ± 0.06

HV 90 Typical Panels *

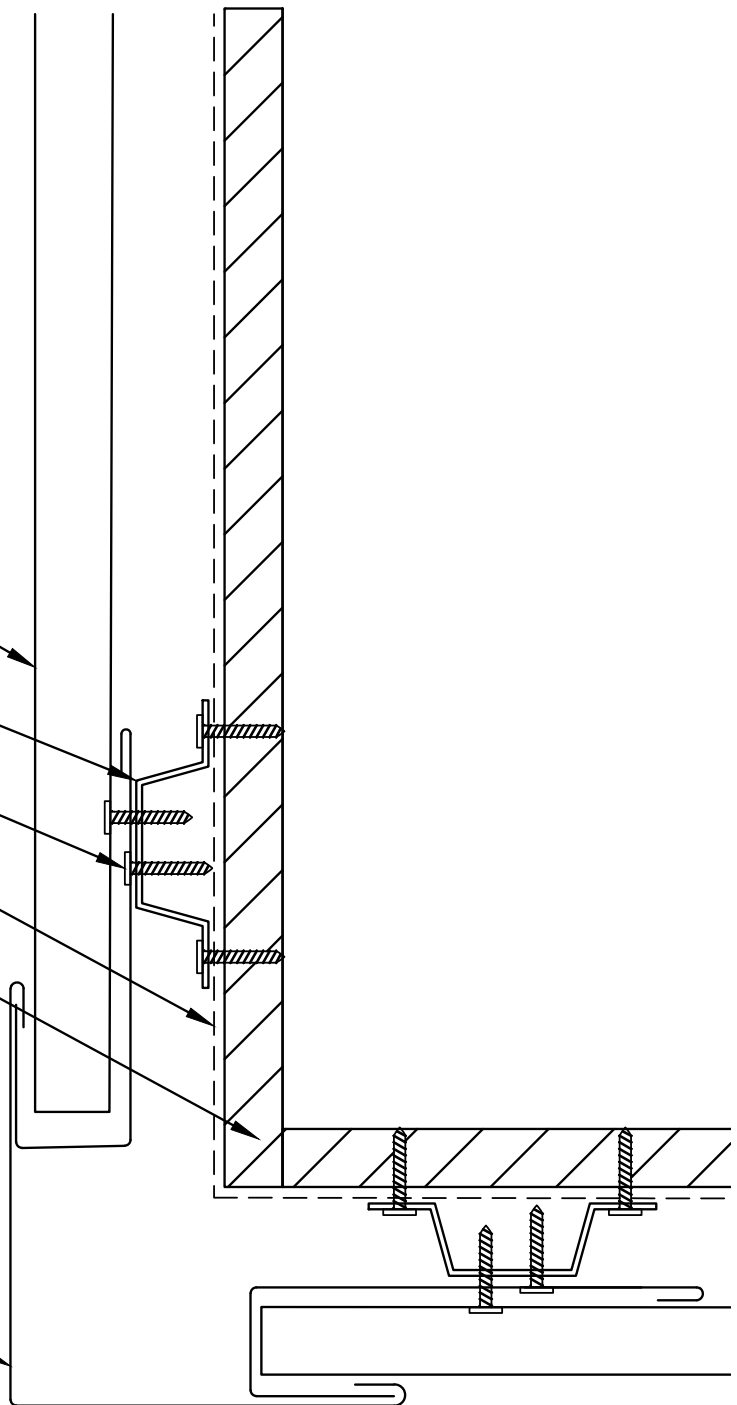
Hat channel
or "z" girts *

Fastener MT101 *

Underlayment *

0.625 Plywood

Corner flashing *



NOTE:

Information and details are only a baseline for system and installation. Modification to meet project requirement is the responsibility of the designer, architect and contractor. MetalTech Global project staff are available to assist throughout the design and build process. © MetalTech Global. All rights reserved.

UNLESS OTHERWISE SPECIFIED
DIMENSIONS ARE IN INCHES

DRAWING NAME:
EXTERIOR CORNER – OPTION 2

REVISION NO:
—

DATED CREATED:
04/13/2015



DWG NO:
MT_HV90WP_1502

CHECKED BY:
THENDERSON

APPROVED BY:
ESIMONSEN

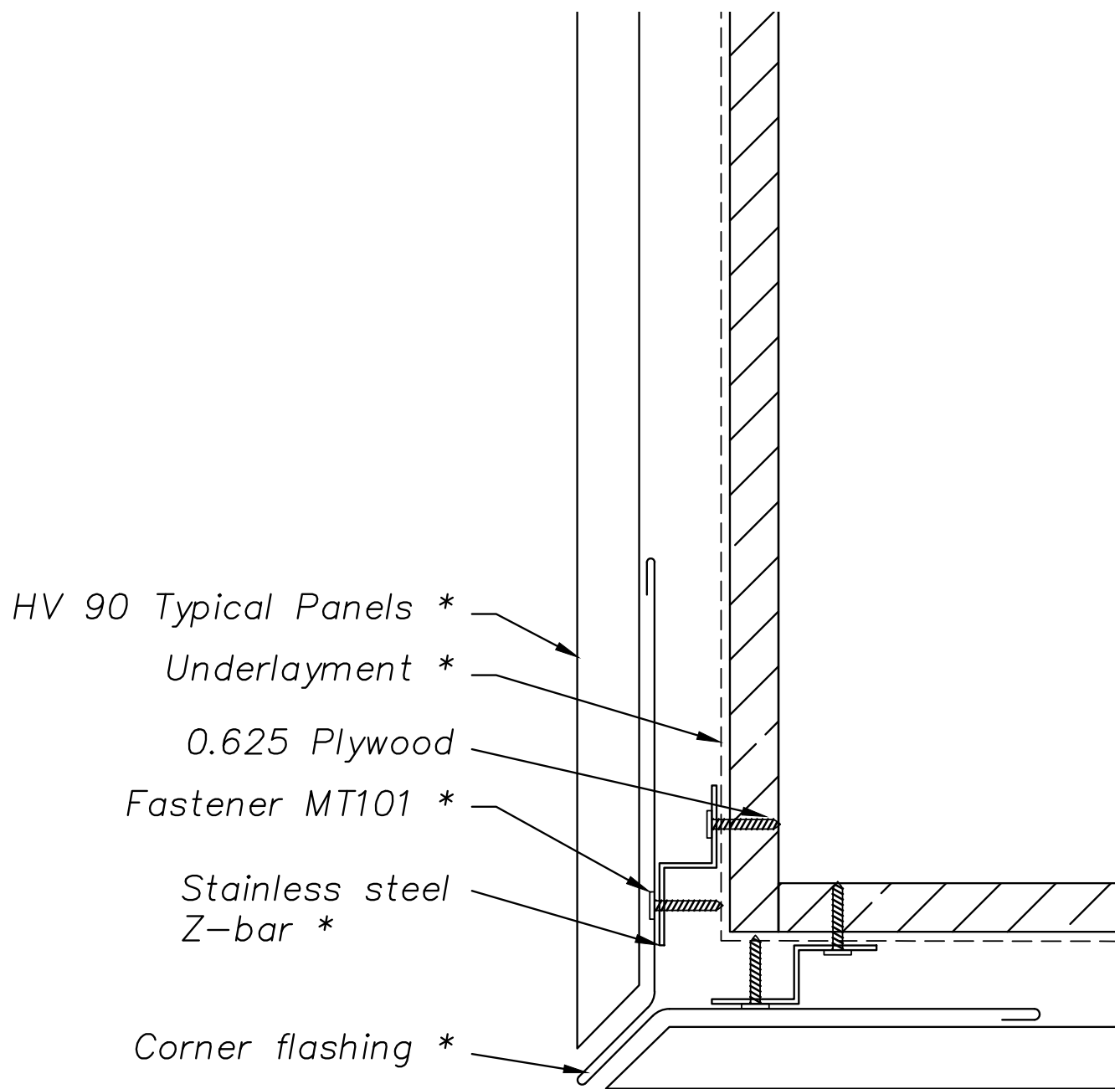
PROJECT NAME:
EXTERIOR DETAILS

SCALE:
NTS

SHEET NO:
2 OF 3


SIZE:
A

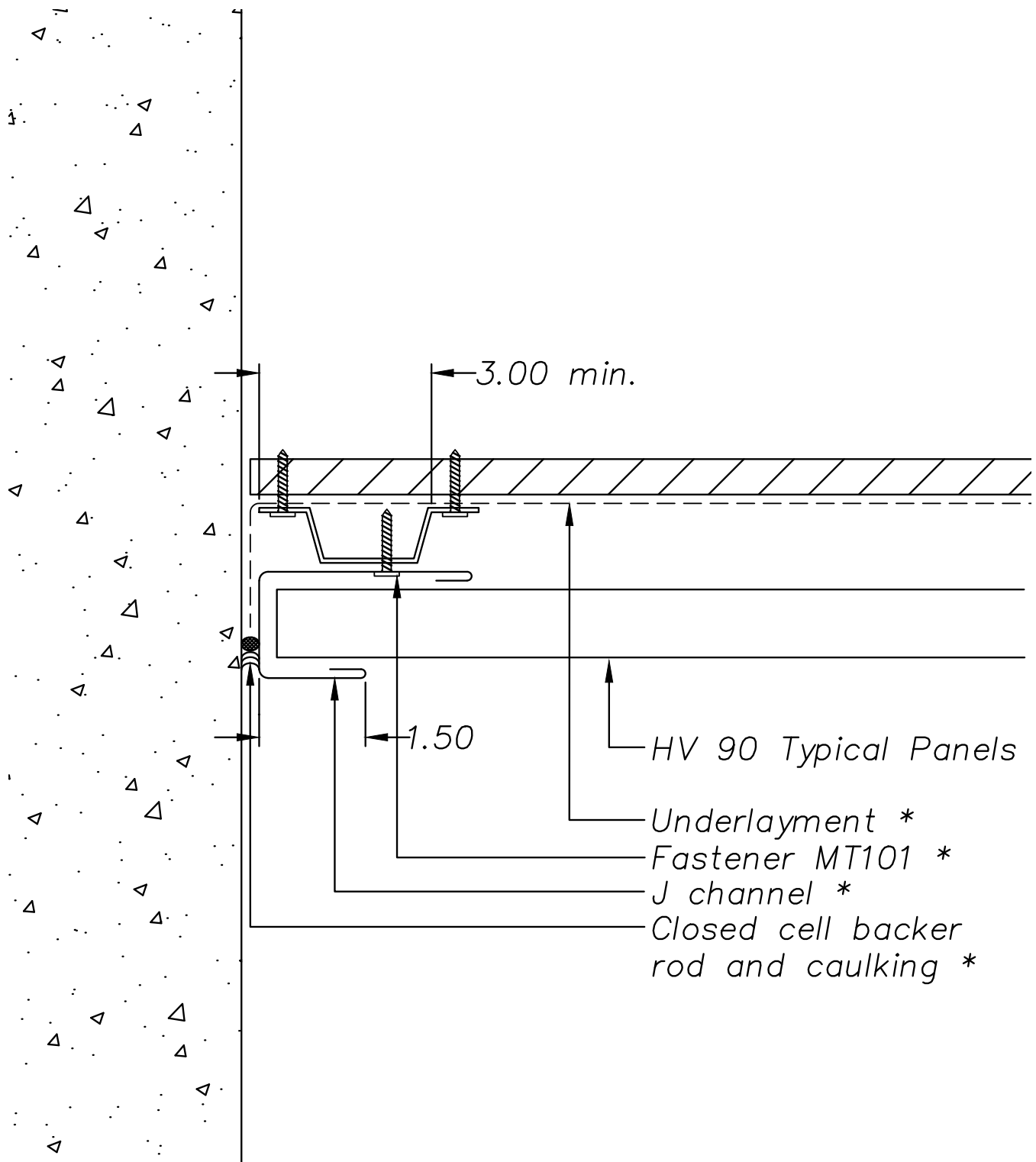
TOLERANCES:
ANGULAR $\pm 1^\circ$ LINEAR ± 0.06



NOTE:

Information and details are only a baseline for system and installation. Modification to meet project requirement is the responsibility of the designer, architect and contractor. MetalTech Global project staff are available to assist throughout the design and build process. © MetalTech Global. All rights reserved.

UNLESS OTHERWISE SPECIFIED DIMENSIONS ARE IN INCHES	DRAWING NAME: EXTERIOR CORNER – OPTION 3	REVISION NO: —	DATED CREATED: 04/13/2015
	DWG NO: MT_HV90WP_1503	CHECKED BY: THENDERSON	APPROVED BY: ESIMONSEN
	PROJECT NAME: EXTERIOR DETAILS		
SCALE: NTS	SHEET NO: 3 OF 3	SIZE: A	TOLERANCES: ANGULAR $\pm 1^\circ$ LINEAR ± 0.06



NOTE:

Information and details are only a baseline for system and installation. Modification to meet project requirement is the responsibility of the designer, architect and contractor. MetalTech Global project staff are available to assist throughout the design and build process. © MetalTech Global. All rights reserved.

UNLESS OTHERWISE SPECIFIED
DIMENSIONS ARE IN INCHES

DRAWING NAME:
END OF WALL DETAIL

REVISION NO:
—

DATED CREATED:
04/13/2015



DWG NO:
MT_HV90WP_1601

CHECKED BY:
THENDERSON

APPROVED BY:
ESIMONSEN

PROJECT NAME:
END OF WALL DETAILS

SCALE:
NTS

SHEET NO:
1 OF 1

SIZE:
A

TOLERANCES:
ANGULAR $\pm 1^\circ$ LINEAR ± 0.06