

Flatlock Wall Panels Details

INDEX OF DRAWINGS

GENERAL DETAILS

MT_FLWP_1001 – Horizontal Flatlock Panel (Folded)
 MT_FLWP_1002 – Horizontal Flatlock Panel (Unfolded)
 MT_FLWP_1003 – Horizontal Flatlock Panel (Isometric)
 MT_FLWP_1004 – Vertical Flatlock Panel (Folded)
 MT_FLWP_1005 – Vertical Flatlock Panel (Unfolded)
 MT_FLWP_1006 – Vertical Flatlock Panel (Isometric)
 MT_FLWP_1007 – Square Diamond Flatlock (Folded)
 MT_FLWP_1008 – Square Diamond Flatlock (Unfolded)
 MT_FLWP_1009 – Rhomboid Flatlock (Folded)
 MT_FLWP_1010 – Rhomboid Flatlock (Unfolded)
 MT_FLWP_1011 – Oblique Flatlock Panel (Folded)
 MT_FLWP_1012 – Oblique Flatlock Panel (Unfolded)
 MT_FLWP_1013 – Flatlock Fasteners
 MT_FLWP_1014 – Flatlock Clip Application
 MT_FLWP_1015 – Flatlock Wall Assembly Section
 MT_FLWP_1016 – Flatlock Wall Assembly Plan

TOP OF WALL DETAILS

MT_FLWP_1101 – Parapet Detail – Option 1
 MT_FLWP_1102 – Parapet Detail – Option 2
 MT_FLWP_1103 – Wall To Soffit Transition

WINDOW DETAILS

MT_FLWP_1201 – Jamb Detail – Option 1
 MT_FLWP_1202 – Jamb Detail – Option 2
 MT_FLWP_1203 – Jamb Detail – Option 3
 MT_FLWP_1204 – Jamb Detail – Option 4
 MT_FLWP_1205 – Head Detail – Option 1
 MT_FLWP_1206 – Head Detail – Option 2
 MT_FLWP_1207 – Head Detail – Option 3
 MT_FLWP_1208 – Sill Detail – Option 1
 MT_FLWP_1209 – Sill Detail – Option 2
 MT_FLWP_1210 – Sill Detail – Option 3

BOTTOM OF WALL DETAILS

MT_FLWP_1301 – Base Detail – Option 1
 MT_FLWP_1302 – Bottom Of Wall @ Roof
 MT_FLWP_1303 – Bottom Of Wall @ Soffit–Option 1
 MT_FLWP_1304 – Bottom Of Wall @ Soffit–Option 2

INTERIOR DETAILS

MT_FLWP_1401 – Interior Corner

EXTERIOR DETAILS


MT_FLWP_1501 – Exterior Detail – Option 1
 MT_FLWP_1502 – Exterior Detail – Option 2
 MT_FLWP_1503 – Exterior Detail – Option 3

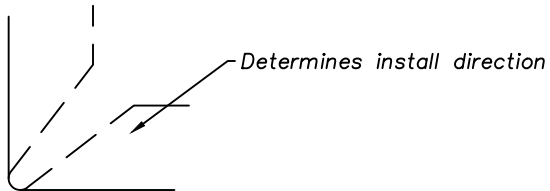
END OF WALL DETAILS

MT_FLWP_1601 – End Of Wall Detail – Option 1
 MT_FLWP_1602 – End Of Wall Detail – Option 2

NOTE:

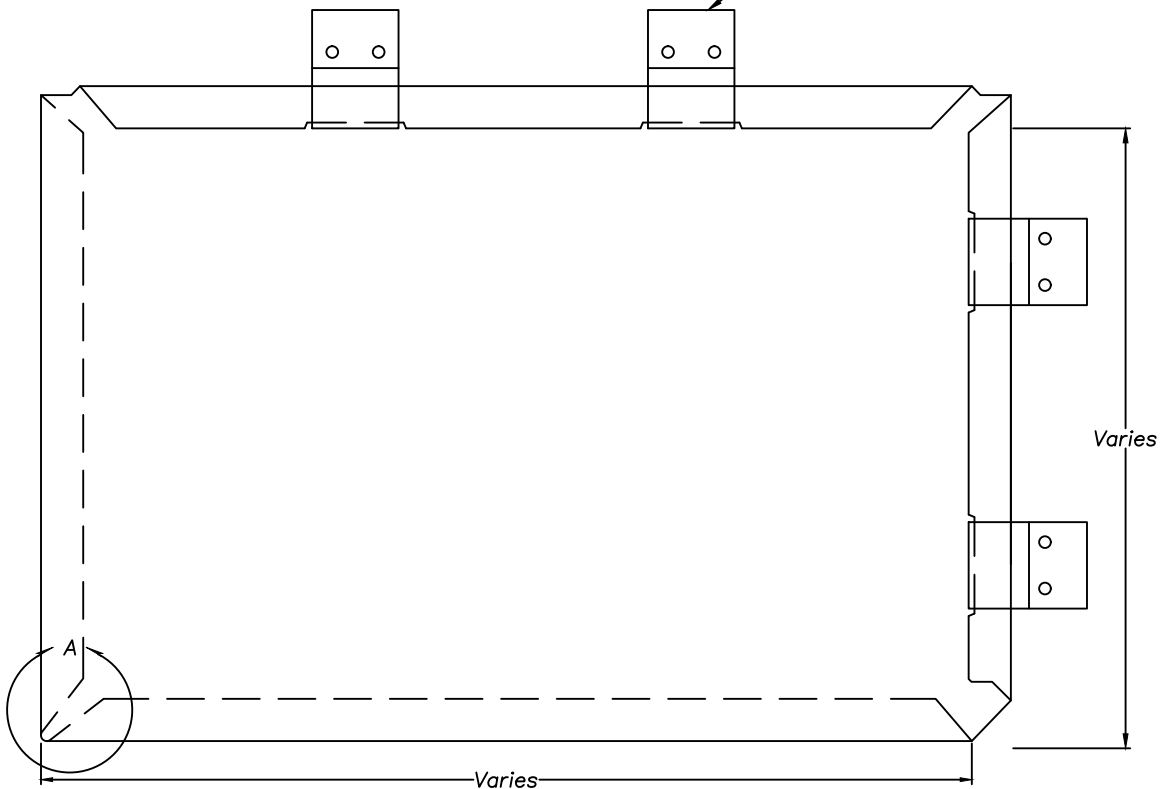
Information and details are only a baseline for system and installation. Modification to meet project requirement is the responsibility of the designer, architect and contractor. MetalTech Global project staff are available to assist throughout the design and build process. © MetalTech Global. All rights reserved.

| | | | | |
|---|-------------------------|---------------------|--------------------------|---|
| UNLESS OTHERWISE SPECIFIED DIMENSIONS ARE IN INCHES | DRAWING NAME: INDEX | | REVISION NO: A | DATED CREATED: 9/12/2014 |
| | DWG NO: MT_FLWP_0000 | | CHECKED BY: ESIMONSEN | APPROVED BY: ESIMONSEN |
|  | PROJECT NAME: INDEX | | | |
| | SCALE: NTS | SHEET NO: 1 OF 1 | SIZE: A | TOLERANCES: ANGULAR ±1° LINEAR ±0.06 |



DETAIL A
SCALE 2:1


See dwg no. MT_FLWP_1013

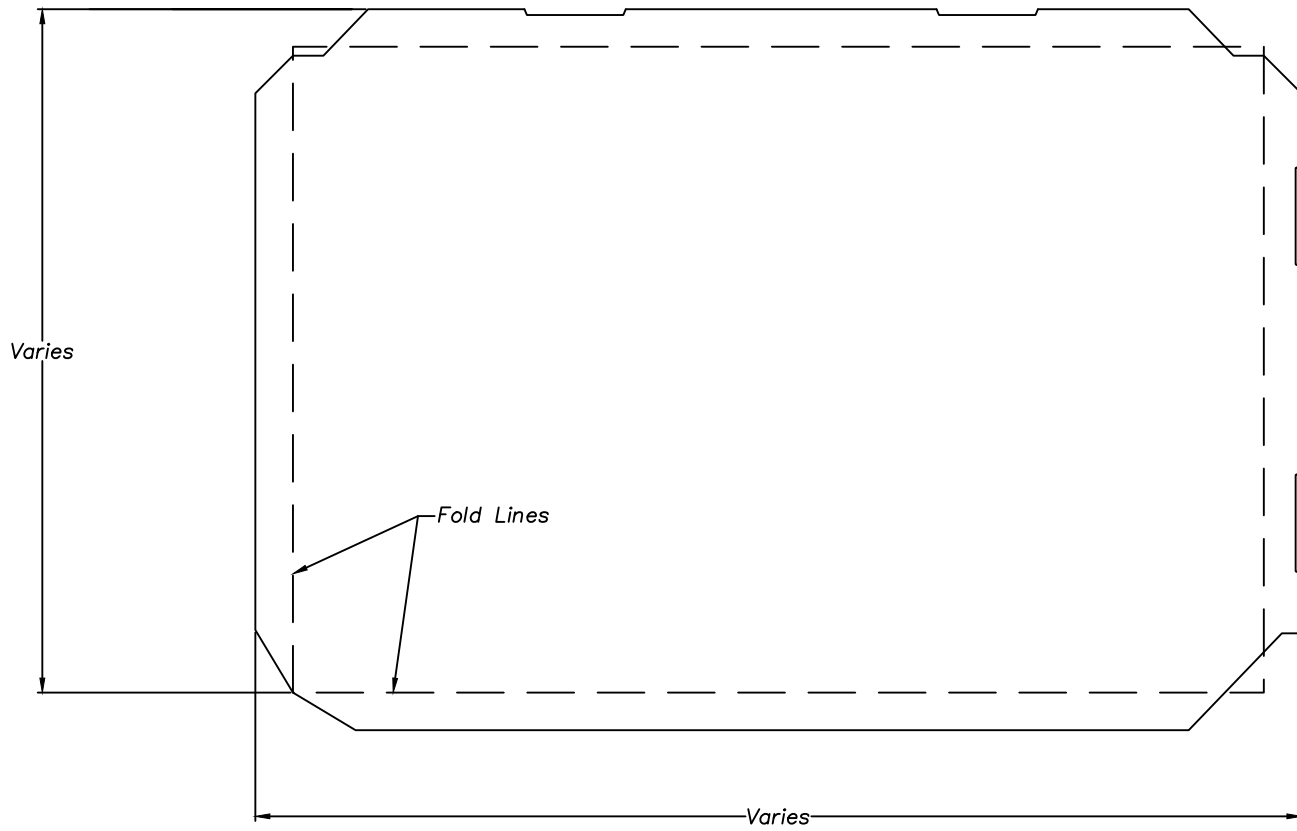


NOTE: Recommended fastener is MT100 Clip. Spacing is determined by project. Panel above is shown as a left to right install.

NOTE:

Information and details are only a baseline for system and installation. Modification to meet project requirement is the responsibility of the designer, architect and contractor. MetalTech Global project staff are available to assist throughout the design and build process. © MetalTech Global. All rights reserved.


| | | | |
|---|---|--------------------------|-----------------------------|
| UNLESS OTHERWISE SPECIFIED DIMENSIONS ARE IN INCHES | DRAWING NAME: HORIZONTAL FLATLOCK PANEL (FOLDED) | REVISION NO: A | DATED CREATED: 9/12/2014 |
|  | DWG NO: MT_FLWP_1001 | CHECKED BY: ESIMONSEN | APPROVED BY: ESIMONSEN |
| | PROJECT NAME: GENERAL DETAILS | | |
| | SCALE: NTS | SHEET NO: 1 OF 16 | SIZE: A |

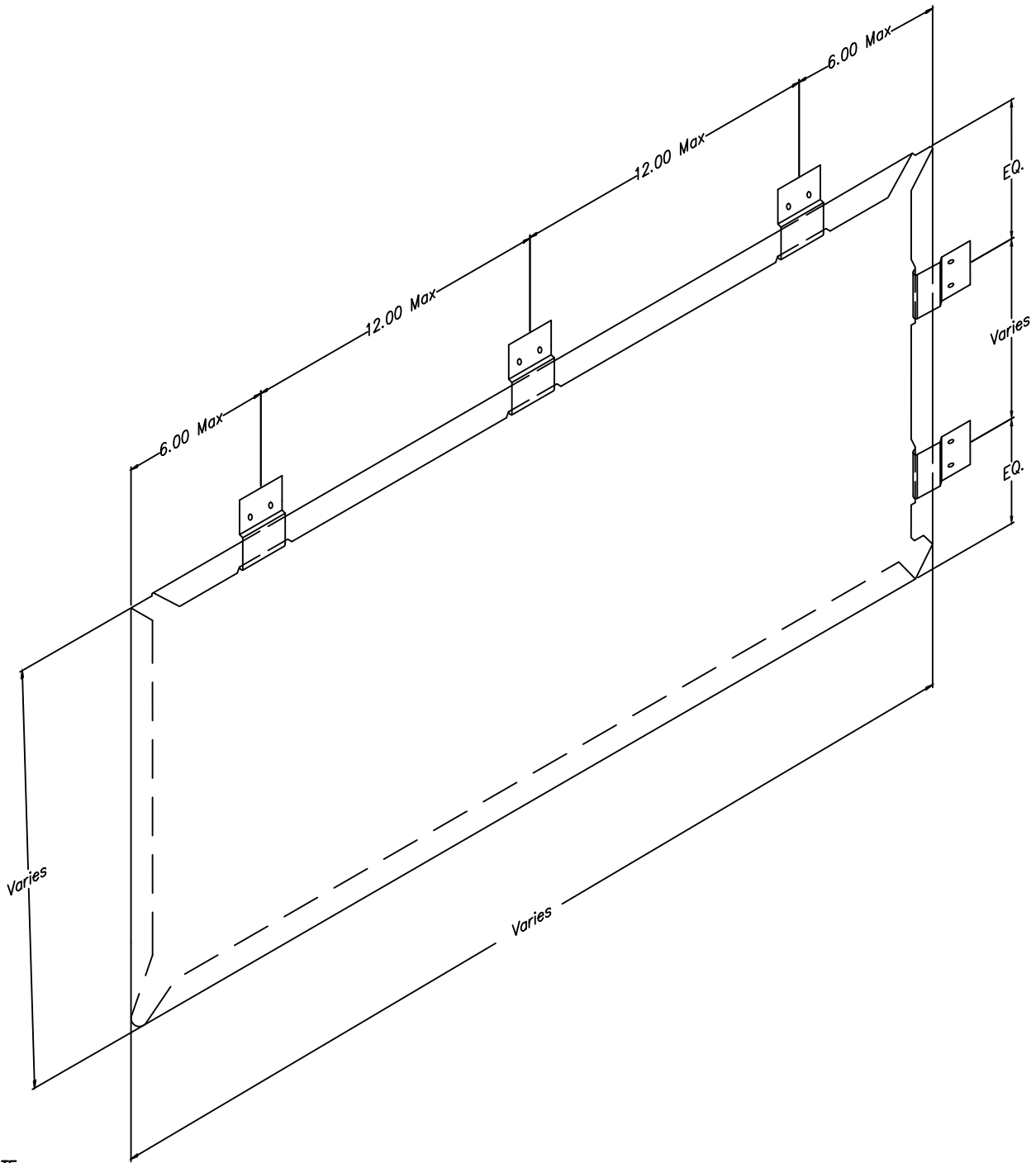


NOTE: Recommended fastener is MT100 Clip. Spacing is determined by project. Panel above is shown as a left to right install.

NOTE:


Information and details are only a baseline for system and installation. Modification to meet project requirement is the responsibility of the designer, architect and contractor. MetalTech Global project staff are available to assist throughout the design and build process. © MetalTech Global. All rights reserved.

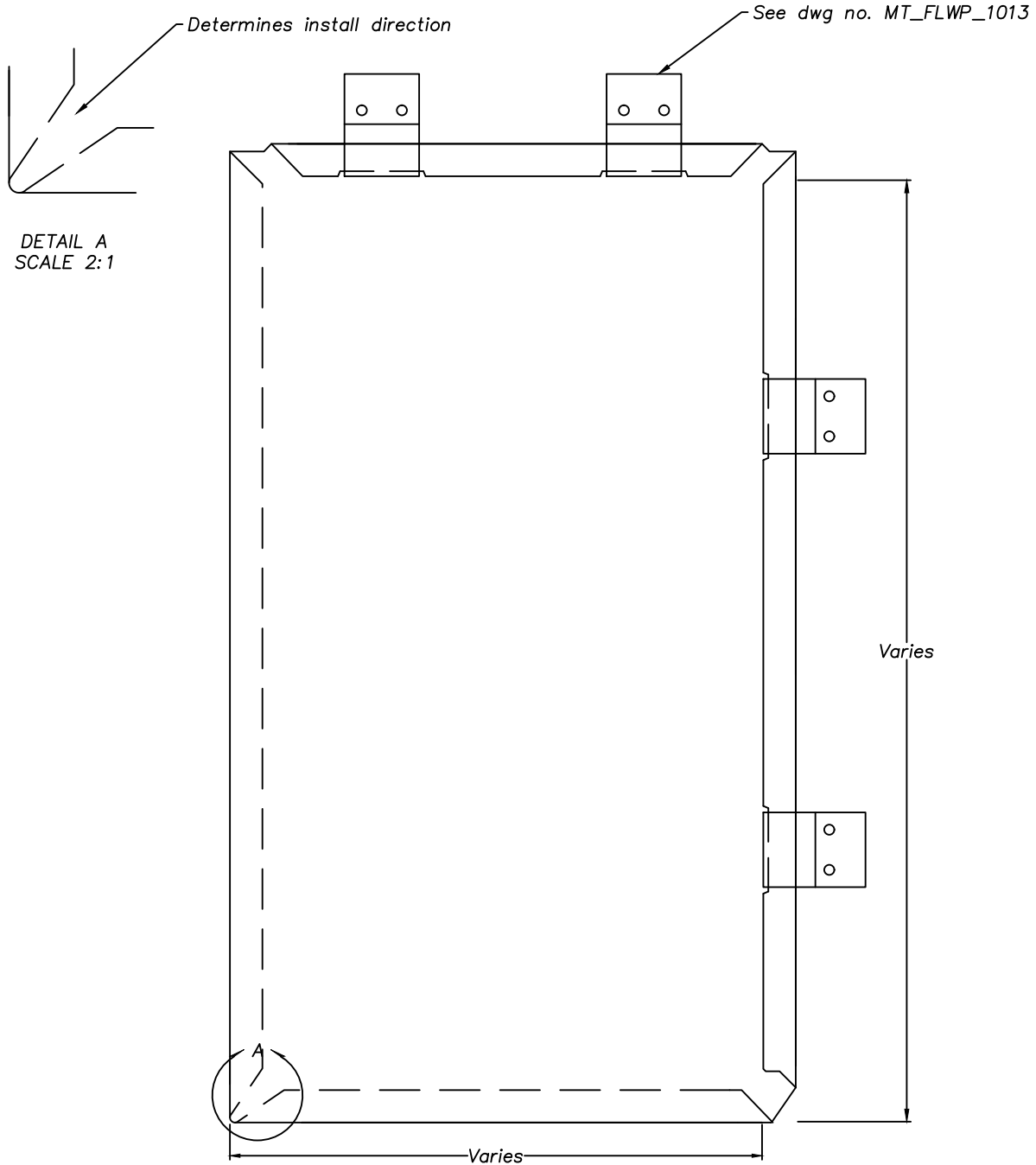
| | | | | |
|---|--|------------------------------|----------------------------------|---|
| <p>UNLESS OTHERWISE SPECIFIED DIMENSIONS ARE IN INCHES</p> | <p>DRAWING NAME: <i>HORIZONTAL FLATLOCK PANEL (UNFOLDED)</i></p> | | <p>REVISION NO: A</p> | <p>DATED CREATED: 9/12/2014</p> |
| | <p>DWG NO: MT_FLWP_1002</p> | | <p>CHECKED BY: ESIMONSEN</p> | <p>APPROVED BY: ESIMONSEN</p> |
|  | <p>PROJECT NAME: GENERAL DETAILS</p> | | | |
| | <p>SCALE: NTS</p> | <p>SHEET NO: 2 OF 16</p> | <p>SIZE: A</p> | <p>TOLERANCES: ANGULAR ±1° LINEAR ±0.06</p> |
| | | | | |



NOTE:

Information and details are only a baseline for system and installation. Modification to meet project requirement is the responsibility of the designer, architect and contractor. MetalTech Global project staff are available to assist throughout the design and build process. © MetalTech Global. All rights reserved.

| | | | |
|---|--|----------------------------------|-------------------------------------|
| <p>UNLESS OTHERWISE SPECIFIED DIMENSIONS ARE IN INCHES</p> | <p>DRAWING NAME: HORIZONTAL FLATLOCK PANEL (ISOMETRIC)</p> | <p>REVISION NO: A</p> | <p>DATED CREATED: 9/15/2014</p> |
|  <p>METALTECH Global a Forza Group Company DESIGNING STRENGTH</p> | <p>DWG NO: MT_FLWP_1003</p> | <p>CHECKED BY: ESIMONSEN</p> | <p>APPROVED BY: ESIMONSEN</p> |
| | <p>PROJECT NAME: GENERAL DETAILS</p> | | |
| | <p>SCALE: NTS</p> | <p>SHEET NO: 3 OF 16</p> | <p>SIZE: A</p> |



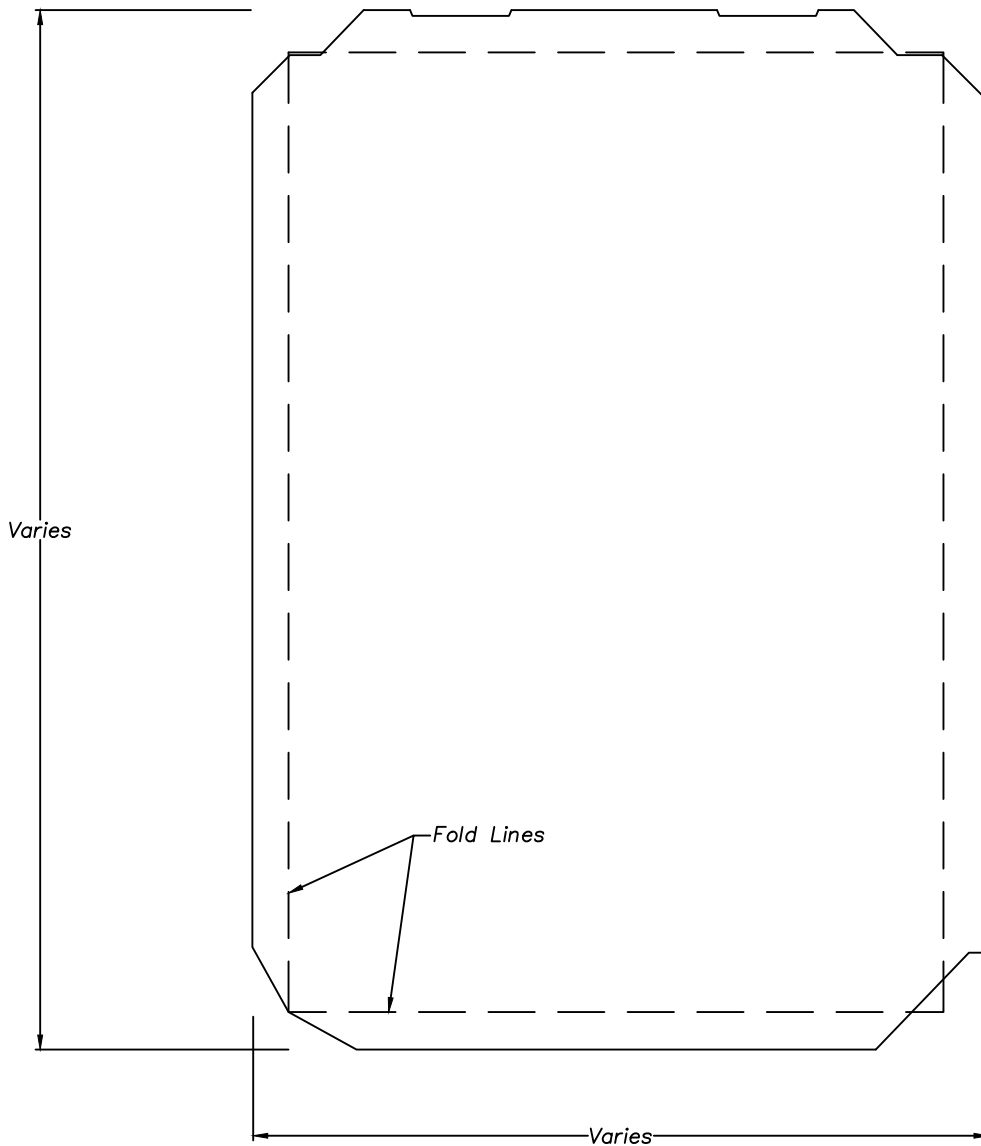
NOTE: Recommended fastener is MT100 Clip. Spacing is determined by project. Panel above is shown as a left to right install.

NOTE:

Information and details are only a baseline for system and installation. Modification to meet project requirement is the responsibility of the designer, architect and contractor. MetalTech Global project staff are available to assist throughout the design and build process. © MetalTech Global. All rights reserved.

| | | | | |
|--|---|------------------------------|----------------------------------|---|
| <p>UNLESS OTHERWISE SPECIFIED DIMENSIONS ARE IN INCHES</p> | <p>DRAWING NAME: VERTICAL FLATLOCK PANEL (FOLDED)</p> | | <p>REVISION NO: A</p> | <p>DATED CREATED: 9/15/2014</p> |
| | <p>DWG NO: MT_FLWP_1004</p> | | <p>CHECKED BY: ESIMONSEN</p> | <p>APPROVED BY: ESIMONSEN</p> |
| <p>PROJECT NAME: GENERAL DETAILS</p> | | | | |
| <p>SCALE: NTS</p> | | <p>SHEET NO: 4 OF 16</p> | <p>SIZE: A</p> | <p>TOLERANCES: ANGULAR ±1° LINEAR ±0.06</p> |




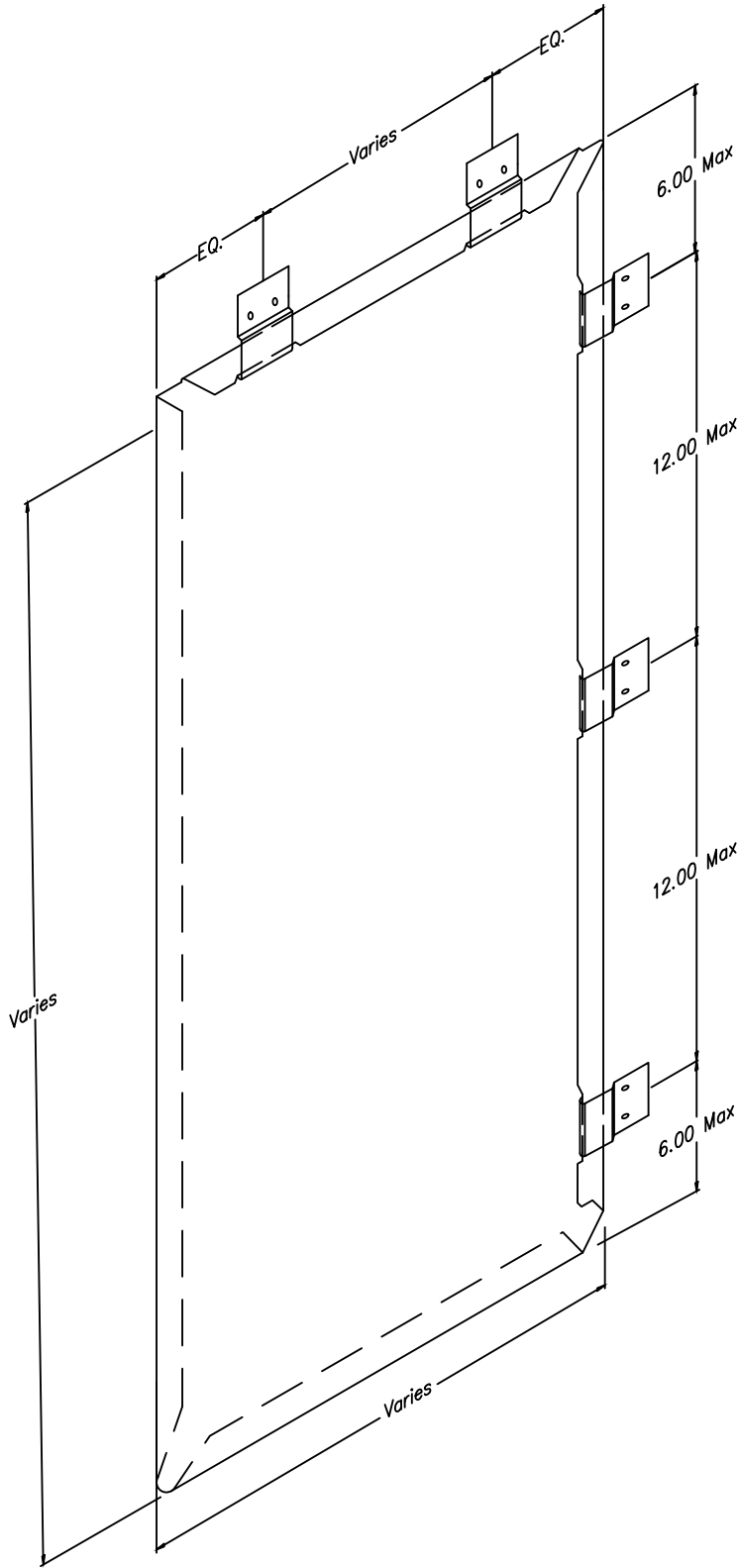


NOTE: Recommended fastener is MT100 Clip. Spacing is determined by project. Panel above is shown as a left to right install.

NOTE:

Information and details are only a baseline for system and installation. Modification to meet project requirement is the responsibility of the designer, architect and contractor. MetalTech Global project staff are available to assist throughout the design and build process. © MetalTech Global. All rights reserved.

| | | | | | | |
|---|---|----------------------|---|--|-----------------------------|--|
|  | UNLESS OTHERWISE SPECIFIED DIMENSIONS ARE IN INCHES | | DRAWING NAME: VERTICAL FLATLOCK PANEL (UNFOLDED) | REVISION NO: A | DATED CREATED: 9/15/2014 | |
| | | | DWG NO: MT_FLWP_1005 | CHECKED BY: ESIMONSEN | APPROVED BY: ESIMONSEN | |
| | | | PROJECT NAME: GENERAL DETAILS | | | |
| | SCALE: NTS | SHEET NO: 5 OF 16 | SIZE: A | TOLERANCES: ANGULAR $\pm 1^\circ$ LINEAR ± 0.06 | | |

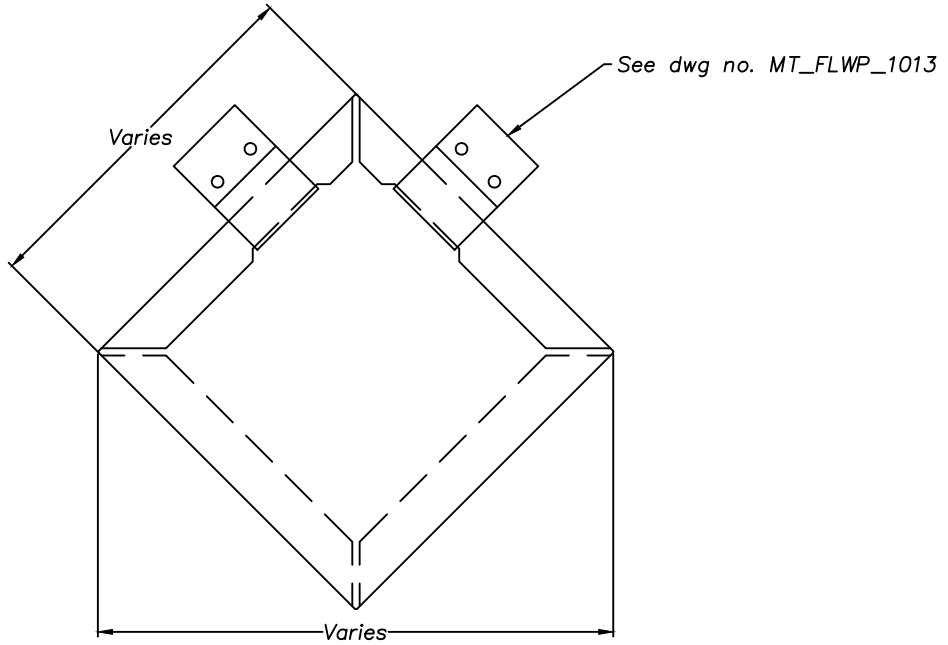


NOTE:

Information and details are only a baseline for system and installation. Modification to meet project requirement is the responsibility of the designer, architect and contractor. MetalTech Global project staff are available to assist throughout the design and build process. © MetalTech Global. All rights reserved.

| | | | | |
|--|--|------------------------------|----------------------------------|---|
| <p>UNLESS OTHERWISE SPECIFIED DIMENSIONS ARE IN INCHES</p> | <p>DRAWING NAME: VERTICAL FLATLOCK PANEL (ISOMETRIC)</p> | | <p>REVISION NO: A</p> | <p>DATED CREATED: 9/15/2014</p> |
| | <p>DWG NO: MT_FLWP_1006</p> | | <p>CHECKED BY: ESIMONSEN</p> | <p>APPROVED BY: ESIMONSEN</p> |
| <p>PROJECT NAME: GENERAL DETAILS</p> | | | | |
| <p>SCALE: NTS</p> | | <p>SHEET NO: 6 OF 16</p> | <p>SIZE: A</p> | <p>TOLERANCES: ANGULAR ±1° LINEAR ±0.06</p> |




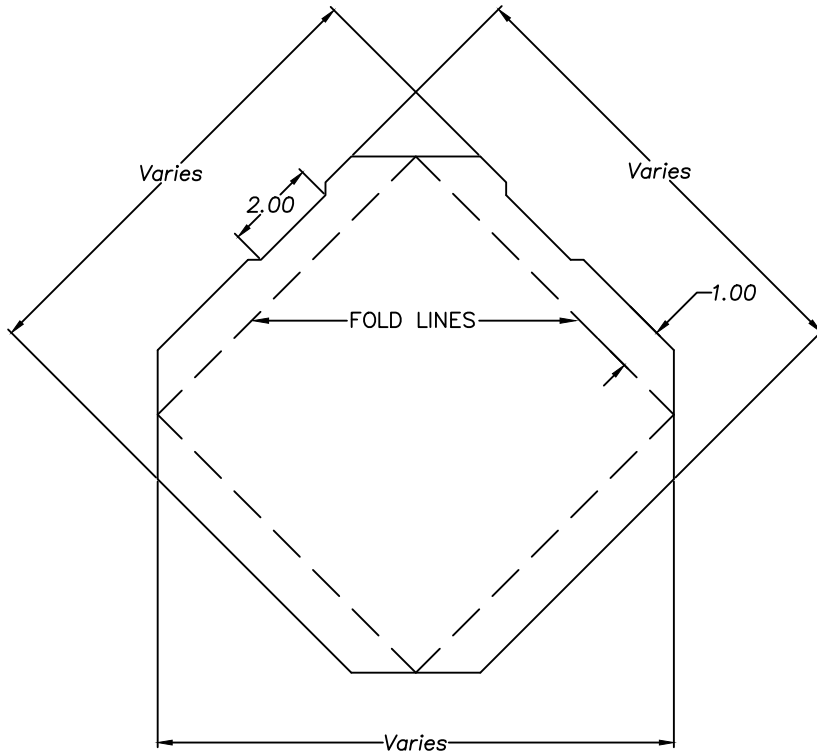


NOTE: Recommended fastener is MT100 Clip. Spacing is determined by project.

NOTE:

Information and details are only a baseline for system and installation. Modification to meet project requirement is the responsibility of the designer, architect and contractor. MetalTech Global project staff are available to assist throughout the design and build process. © MetalTech Global. All rights reserved.


| | | | |
|--|---|----------------------------------|-------------------------------------|
| <p>UNLESS OTHERWISE SPECIFIED DIMENSIONS ARE IN INCHES</p> | <p>DRAWING NAME: SQUARE DIAMOND FLATLOCK (FOLDED)</p> | <p>REVISION NO: A</p> | <p>DATED CREATED: 9/15/2014</p> |
|  <p>METALTECH Global <small>a Forza Group Company</small> DESIGNING STRENGTH</p> | <p>DWG NO: MT_FLWP_1007</p> | <p>CHECKED BY: ESIMONSEN</p> | <p>APPROVED BY: ESIMONSEN</p> |
| | <p>PROJECT NAME: GENERAL DETAILS</p> | | |
| | <p>SCALE: NTS</p> | <p>SHEET NO: 7 OF 16</p> | <p>SIZE: A</p> |

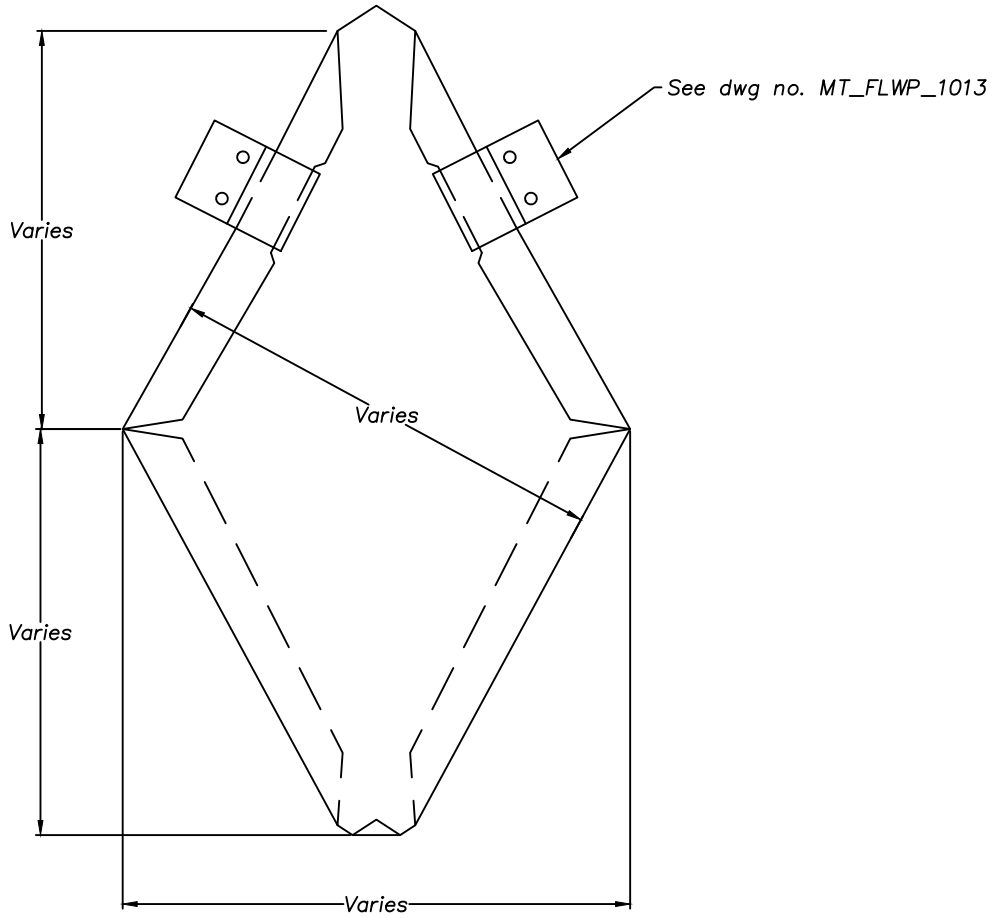


NOTE: Recommended fastener is MT100 Clip. Spacing is determined by project.

NOTE:

Information and details are only a baseline for system and installation. Modification to meet project requirement is the responsibility of the designer, architect and contractor. MetalTech Global project staff are available to assist throughout the design and build process. © MetalTech Global. All rights reserved.


| | | | | |
|---|--|-------------------------------------|---|--|
| <p>UNLESS OTHERWISE SPECIFIED DIMENSIONS ARE IN INCHES</p> | <p>DRAWING NAME: SQUARE DIAMOND FLATLOCK (UNFOLDED)</p> | | <p>REVISION NO: A</p> | <p>DATED CREATED: 9/15/2014</p> |
|  | <p>DWG NO: MT_FLWP_1008</p> | | <p>CHECKED BY: ESIMONSEN</p> | <p>APPROVED BY: ESIMONSEN</p> |
| | <p>PROJECT NAME: GENERAL DETAILS</p> | | | |
| | <p>SCALE: NTS</p> | <p>SHEET NO: 8 OF 16</p> | <p>SIZE: A</p> | <p>TOLERANCES: ANGULAR ±1° LINEAR ±0.06</p> |

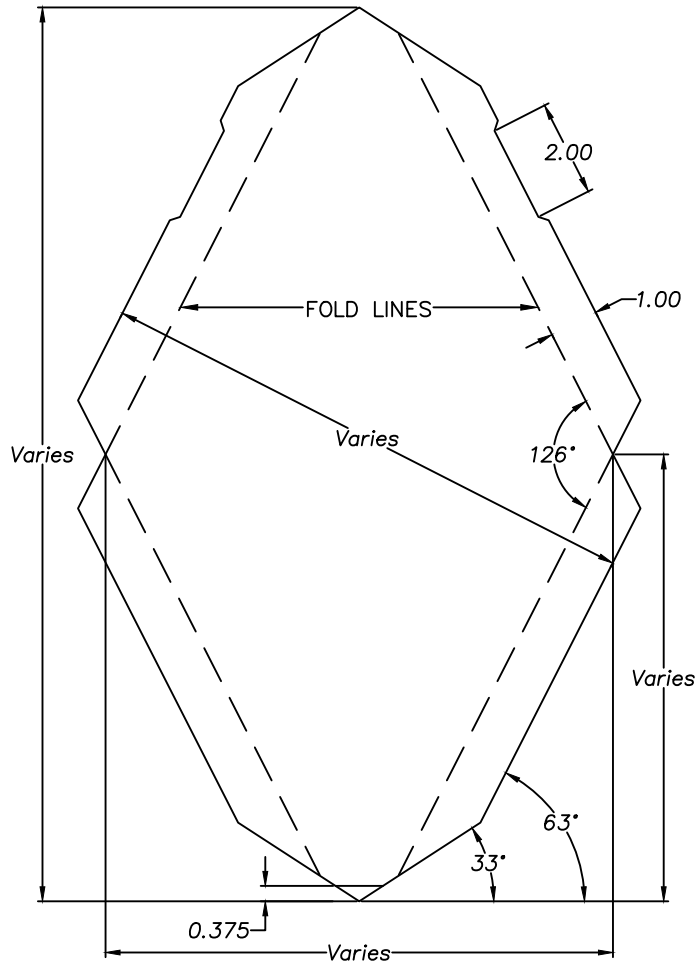


NOTE: Recommended fastener is MT100 Clip. Spacing is determined by project.

NOTE:

Information and details are only a baseline for system and installation. Modification to meet project requirement is the responsibility of the designer, architect and contractor. MetalTech Global project staff are available to assist throughout the design and build process. © MetalTech Global. All rights reserved.

| | | | | |
|---|--|-----------------------------|---------------------------------|---|
|  <p>METALTECH Global a Forza Group Company DESIGNING STRENGTH</p> | DRAWING NAME: RHOMBOID FLATLOCK (FOLDED) | | REVISION NO: A | DATED CREATED: 9/15/2014 |
| | DWG NO: MT_FLWP_1009 | | CHECKED BY: ESIMONSEN | APPROVED BY: ESIMONSEN |
| | PROJECT NAME: GENERAL DETAILS | | | |
| | SCALE: NTS | SHEET NO: 9 OF 16 | SIZE: A | TOLERANCES: ANGULAR $\pm 1^\circ$ LINEAR ± 0.06 |

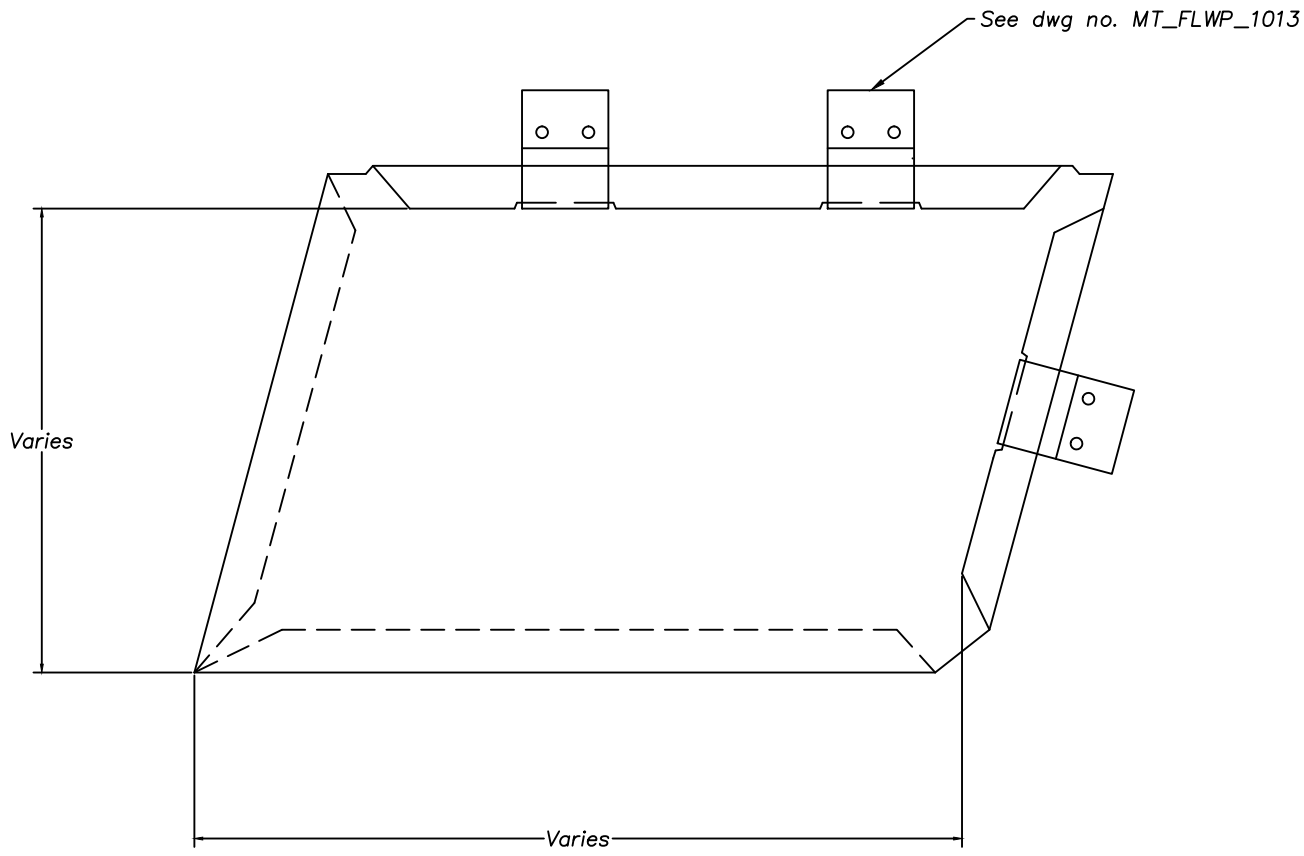


NOTE: Recommended fastener is MT100 Clip. Spacing is determined by project.

NOTE:

Information and details are only a baseline for system and installation. Modification to meet project requirement is the responsibility of the designer, architect and contractor. MetalTech Global project staff are available to assist throughout the design and build process. © MetalTech Global. All rights reserved.

| | | | | | |
|--|---|-------------------------------|----------------------------------|---|--|
| <p>UNLESS OTHERWISE SPECIFIED DIMENSIONS ARE IN INCHES</p> | <p>DRAWING NAME: RHOMBOID FLATLOCK (UNFOLDED)</p> | | <p>REVISION NO: A</p> | <p>DATED CREATED: 9/15/2014</p> | |
| | <p>DWG NO: MT_FLWP_1010</p> | | <p>CHECKED BY: ESIMONSEN</p> | <p>APPROVED BY: ESIMONSEN</p> | |
| | <p>PROJECT NAME: GENERAL DETAILS</p> | | | | |
| | <p>SCALE: NTS</p> | <p>SHEET NO: 10 OF 16</p> | <p>SIZE: A</p> | <p>TOLERANCES: ANGULAR ±1° LINEAR ±0.06</p> | |

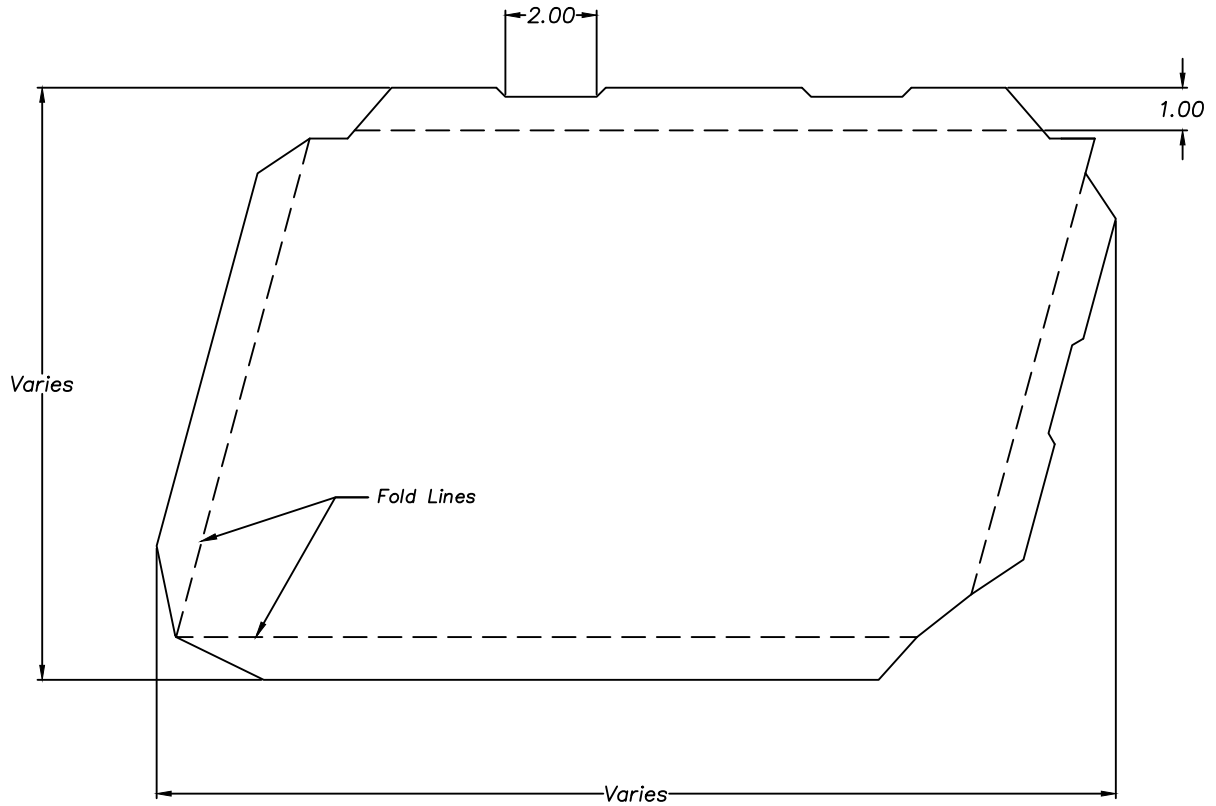


NOTE: Recommended fastener is MT100 Clip. Spacing is determined by project.

NOTE:

Information and details are only a baseline for system and installation. Modification to meet project requirement is the responsibility of the designer, architect and contractor. MetalTech Global project staff are available to assist throughout the design and build process. © MetalTech Global. All rights reserved.

| | | | | |
|--|---|---------------------------|--|--|
| <p>UNLESS OTHERWISE SPECIFIED DIMENSIONS ARE IN INCHES</p> | <p>DRAWING NAME: OBLIQUE FLATLOCK PANEL (FOLDED)</p> | | <p>REVISION NO: A</p> | <p>DATED CREATED: 9/16/2014</p> |
| | <p>DWG NO: MT_FLWP_1011</p> | | <p>CHECKED BY: ESIMONSEN</p> | <p>APPROVED BY: ESIMONSEN</p> |
| <p>PROJECT NAME: GENERAL DETAILS</p> | | | | |
| <p>SCALE: NTS</p> | <p>SHEET NO: 11 OF 16</p> | <p>SIZE: A</p> | <p>TOLERANCES: ANGULAR ±1° LINEAR ±0.06</p> | |

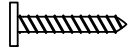
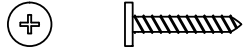


NOTE: Recommended fastener is MT100 Clip. Spacing is determined by project.

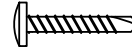
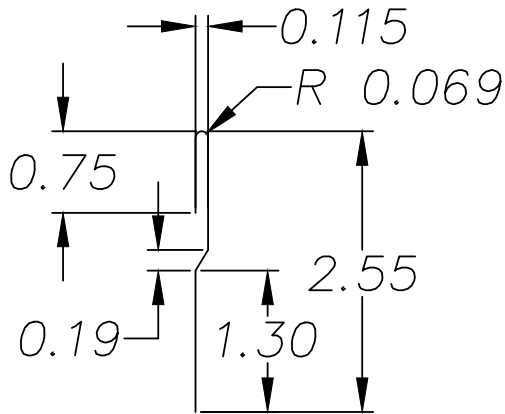
NOTE:

Information and details are only a baseline for system and installation. Modification to meet project requirement is the responsibility of the designer, architect and contractor. MetalTech Global project staff are available to assist throughout the design and build process. © MetalTech Global. All rights reserved.

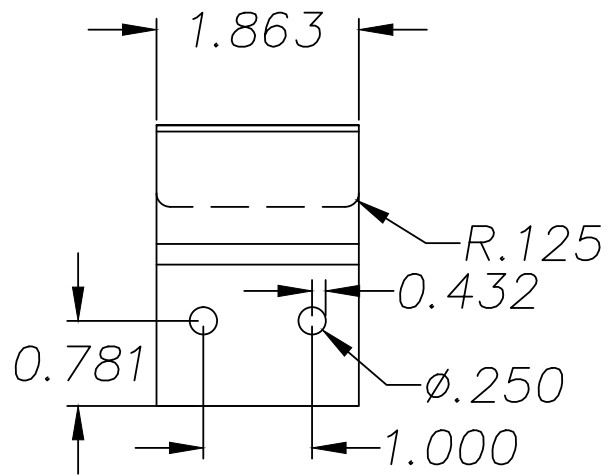
| | | | | | |
|--|---|-----------------------|--|---|-----------------------------|
| | UNLESS OTHERWISE SPECIFIED DIMENSIONS ARE IN INCHES | | DRAWING NAME: OBLIQUE FLATLOCK PANEL (UNFOLDED) | REVISION NO: A | DATED CREATED: 9/16/2014 |
| | DWG NO: MT_FLWP_1012 | | CHECKED BY: ESIMONSEN | | APPROVED BY: ESIMONSEN |
| | PROJECT NAME: GENERAL DETAILS | | | | |
| | SCALE: NTS | SHEET NO: 12 OF 16 | SIZE: A | TOLERANCES: ANGULAR ±1° LINEAR ±0.06 | |



MT101
Wood Applications




MT101SX3
Sheet Metal Applications

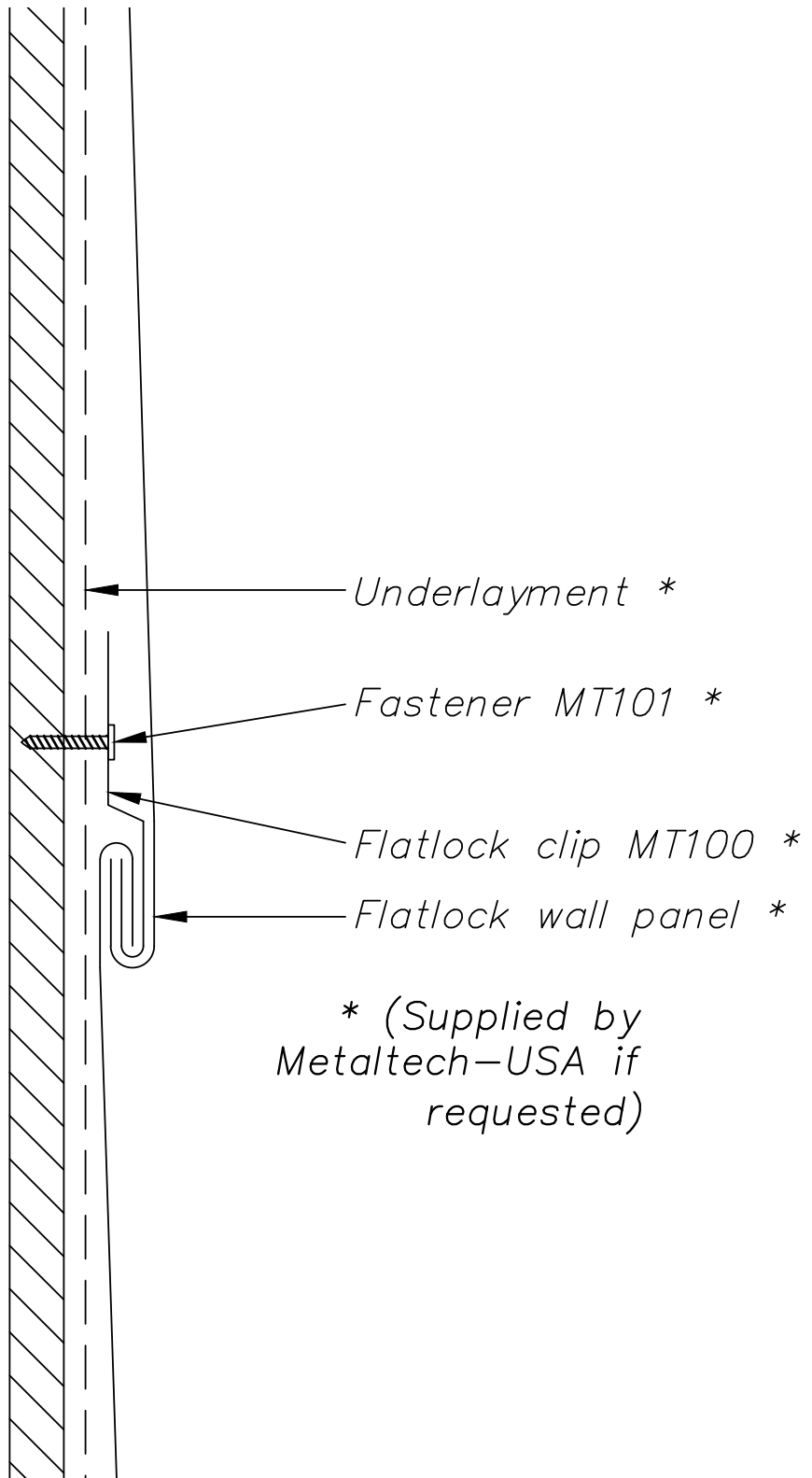


SS MT100 Flatlock Clip
Material is 24 gauge stainless steel

NOTE:

Information and details are only a baseline for system and installation. Modification to meet project requirement is the responsibility of the designer, architect and contractor. MetalTech Global project staff are available to assist throughout the design and build process. © MetalTech Global. All rights reserved.


| | | | | |
|---|-------------------------------------|-----------------------|--------------------------|---|
| UNLESS OTHERWISE SPECIFIED DIMENSIONS ARE IN INCHES | DRAWING NAME: FLATLOCK FASTENERS | | REVISION NO: A | DATED CREATED: 9/15/2014 |
|  | DWG NO: MT_FLWP_1013 | | CHECKED BY: ESIMONSEN | APPROVED BY: ESIMONSEN |
| | PROJECT NAME: GENERAL DETAILS | | | |
| | SCALE: NTS | SHEET NO: 13 OF 16 | SIZE: A | TOLERANCES: ANGULAR ±1° LINEAR ±0.06 |

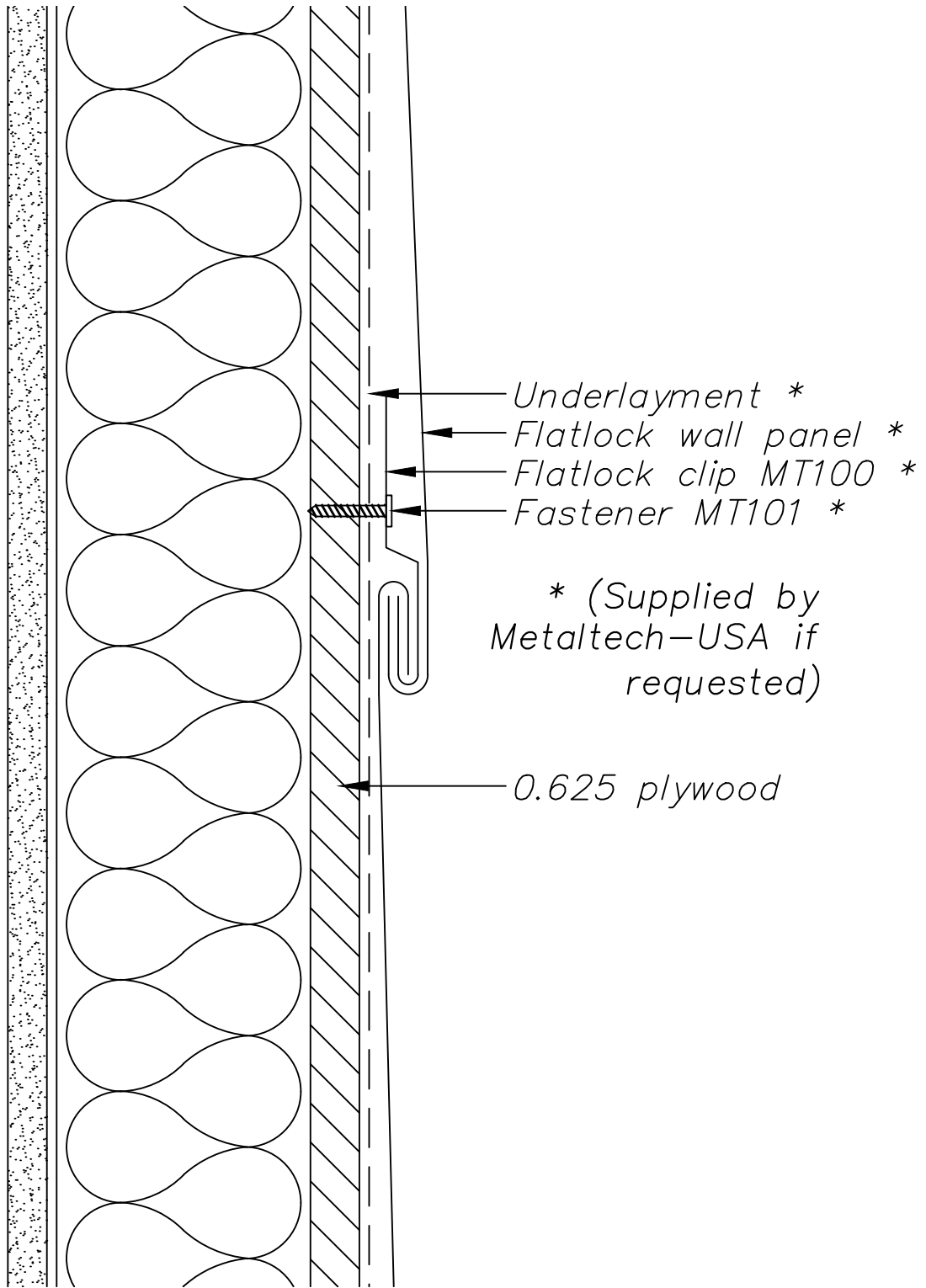


* (Supplied by
Metaltech-USA if
requested)

NOTE:

Information and details are only a baseline for system and installation. Modification to meet project requirement is the responsibility of the designer, architect and contractor. MetalTech Global project staff are available to assist throughout the design and build process. © MetalTech Global. All rights reserved.

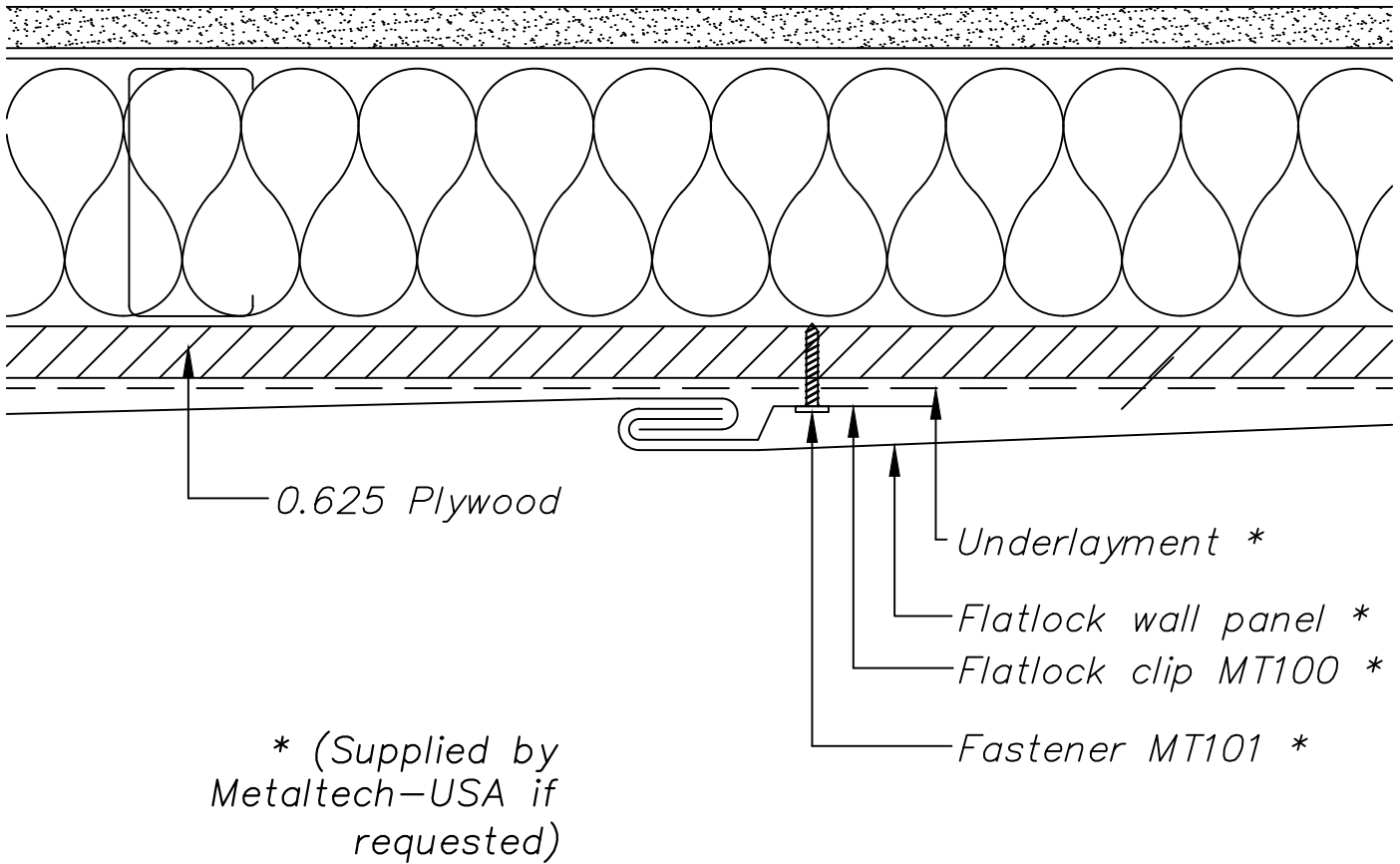
| | | | | |
|---|---|------------------------------|---------------------------------|---|
|  | DRAWING NAME: FLATLOCK CLIP APPLICATION | | REVISION NO: A | DATED CREATED: 9/16/2014 |
| | DWG NO: MT_FLWP_1014 | | CHECKED BY: ESIMONSEN | APPROVED BY: ESIMONSEN |
| | PROJECT NAME: GENERAL DETAILS | | | |
| | SCALE: NTS | SHEET NO: 14 OF 16 | SIZE: A | TOLERANCES: ANGULAR $\pm 1^\circ$ LINEAR ± 0.06 |



NOTE:

Information and details are only a baseline for system and installation. Modification to meet project requirement is the responsibility of the designer, architect and contractor. MetalTech Global project staff are available to assist throughout the design and build process. © MetalTech Global. All rights reserved.

| | | | | |
|--|---|-------------------------------|----------------------------------|---|
| <p>UNLESS OTHERWISE SPECIFIED DIMENSIONS ARE IN INCHES</p> | <p>DRAWING NAME: FLATLOCK WALL ASSEMBLY SECTION</p> | | <p>REVISION NO: A</p> | <p>DATED CREATED: 9/16/2014</p> |
| | <p>DWG NO: MT_FLWP_1015</p> | | <p>CHECKED BY: ESIMONSEN</p> | <p>APPROVED BY: ESIMONSEN</p> |
| | <p>PROJECT NAME: GENERAL DETAILS</p> | | | |
| | <p>SCALE: NTS</p> | <p>SHEET NO: 15 OF 16</p> | <p>SIZE: A</p> | <p>TOLERANCES: ANGULAR ±1° LINEAR ±0.06</p> |



NOTE:

Information and details are only a baseline for system and installation. Modification to meet project requirement is the responsibility of the designer, architect and contractor. MetalTech Global project staff are available to assist throughout the design and build process. © MetalTech Global. All rights reserved.

| | | | | | | |
|--|--|------------------------------|---|---|------------------------------------|--|
| | UNLESS OTHERWISE SPECIFIED DIMENSIONS ARE IN INCHES | | DRAWING NAME: FLATLOCK WALL ASSEMBLY PLAN | REVISION NO: A | DATED CREATED: 9/16/2014 | |
| | | | DWG NO: MT_FLWP_1016 | CHECKED BY: ESIMONSEN | APPROVED BY: ESIMONSEN | |
| | | | PROJECT NAME: GENERAL DETAILS | | | |
| | SCALE: NTS | SHEET NO: 16 OF 16 | SIZE: A | TOLERANCES: ANGULAR $\pm 1^\circ$ LINEAR ± 0.06 | | |

Parapet cap w/proroofting and 3 degree min. slope *

Enkamat*

Continuous support angle *

Underlayment *

Flatlock wall panel *

0.625 Plywood

Fastener MT101 *

Flatlock clip MT100 *

Field folded

* (Supplied by Metaltech-USA if requested)

NOTE: Recommended fastener is MT100 Clip. Spacing is dertermined by project. Panel above is shown as a left to right install.

NOTE:

Information and details are only a baseline for system and installation. Modification to meet project requirement is the responsibility of the designer, architect and contractor. MetalTech Global project staff are available to assist throughout the design and build process. © MetalTech Global. All rights reserved.

| | | | | |
|--|--|--------------------|---|-------------------------------------|
| <p>UNLESS OTHERWISE SPECIFIED DIMENSIONS ARE IN INCHES</p> | <p>DRAWING NAME: PARAPET DETAIL – OPTION 1</p> | | <p>REVISION NO: –</p> | <p>DATED CREATED: 9/17/2014</p> |
| | <p>DWG NO: MT_FLWP_1101</p> | | <p>CHECKED BY: ESIMONSEN</p> | <p>APPROVED BY: ESIMONSEN</p> |
| <p>PROJECT NAME: TOP OF WALL DETAILS</p> | | | | |
| <p>SCALE: NTS</p> | <p>SHEET NO: 1 OF 3</p> | <p>SIZE: A</p> | <p>TOLERANCES: ANGULAR ±1° LINEAR ±0.06</p> | |



Parapet cap w/proroofting and 3 degree min. slope *

Enkamat*

Continuous support angle *

Underlayment *

Flatlock wall panel *

0.625 Plywood

Fastener MT101 *

Flatlock clip MT100 *


Field folded

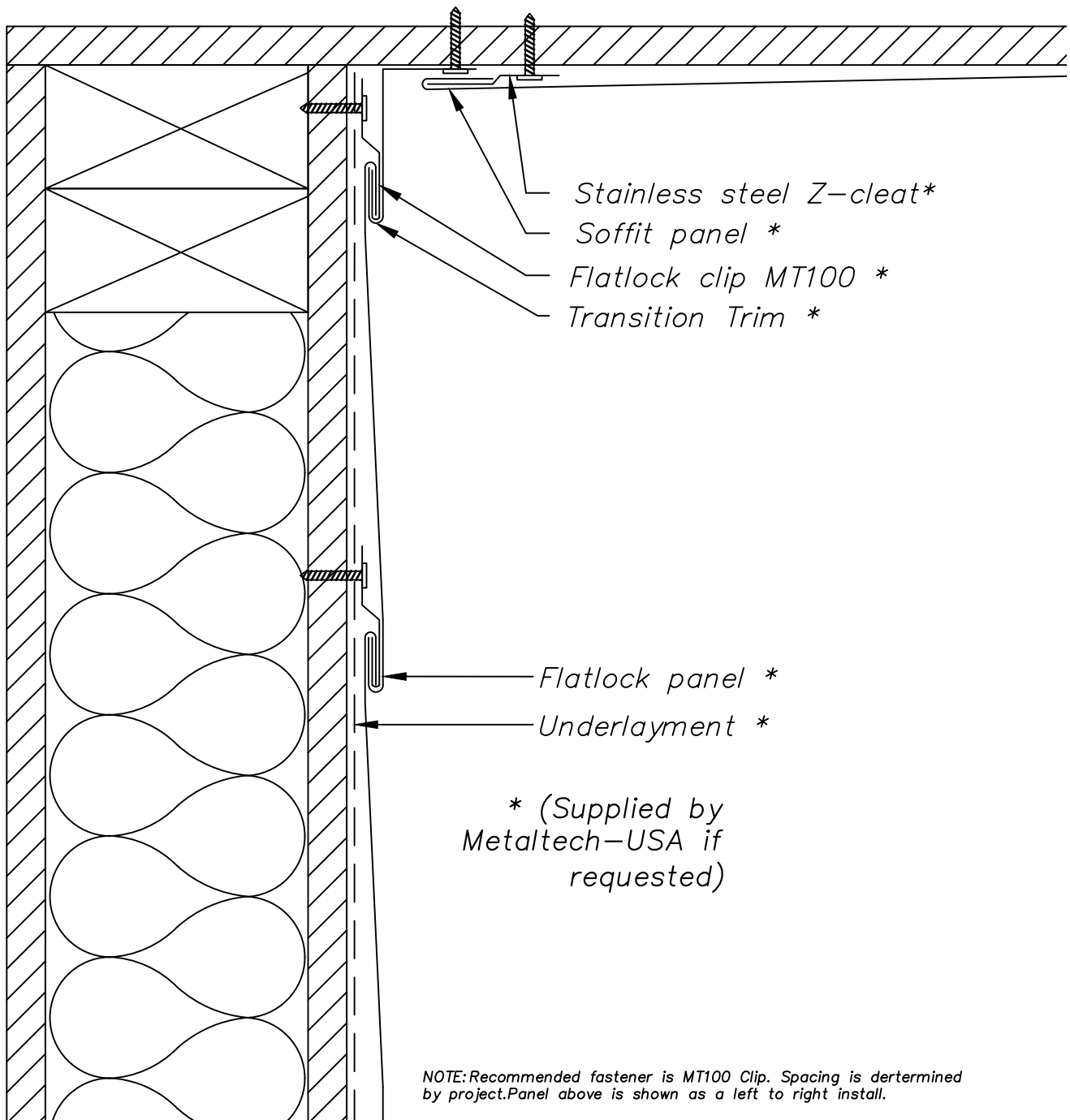
* (Supplied by Metaltech-USA if requested)

NOTE: Recommended fastener is MT100 Clip. Spacing is dertermined by project. Panel above is shown as a left to right install.

NOTE:

Information and details are only a baseline for system and installation. Modification to meet project requirement is the responsibility of the designer, architect and contractor. MetalTech Global project staff are available to assist throughout the design and build process. © MetalTech Global. All rights reserved.

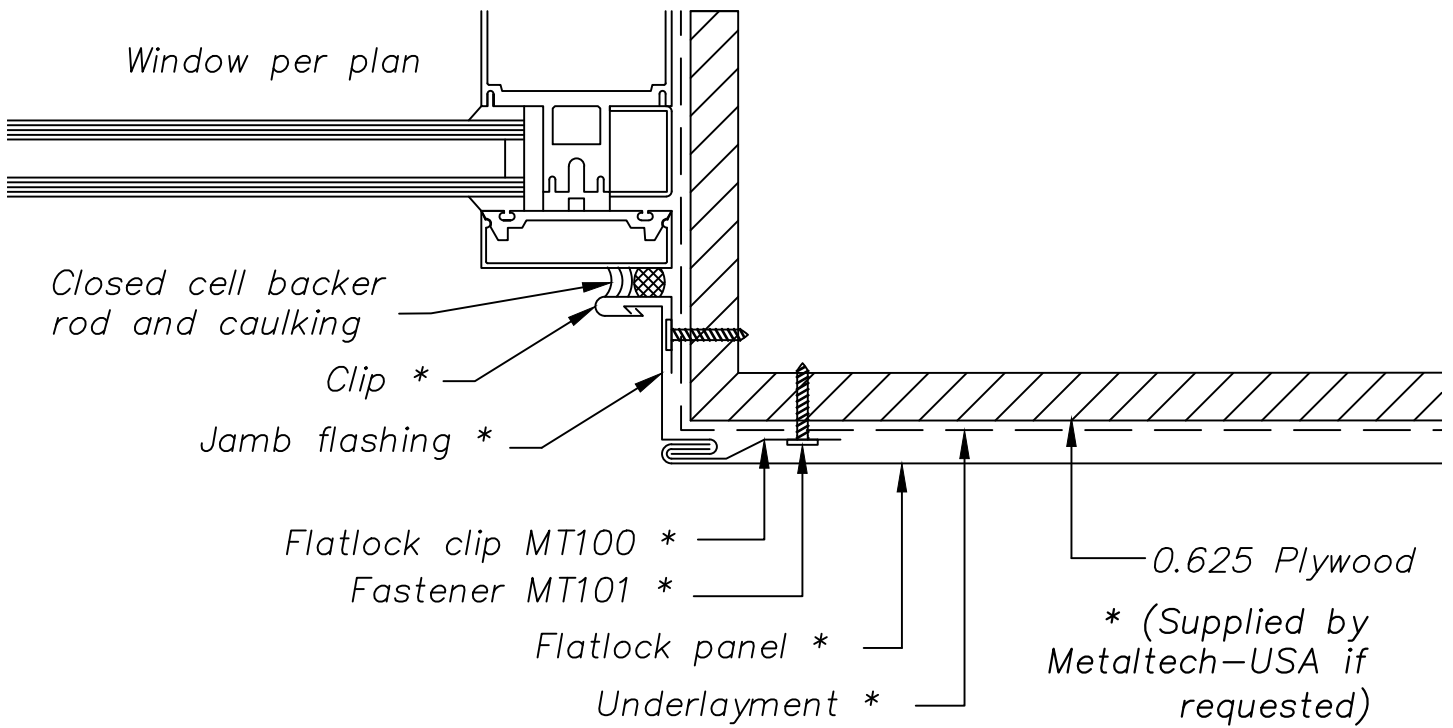
| | | | | |
|--|--|--------------------|---|-------------------------------------|
| <p>UNLESS OTHERWISE SPECIFIED DIMENSIONS ARE IN INCHES</p>  | <p>DRAWING NAME: PARAPET DETAIL – OPTION 2</p> | | <p>REVISION NO: A</p> | <p>DATED CREATED: 9/17/2014</p> |
| | <p>DWG NO: MT_FLWP_1102</p> | | <p>CHECKED BY: ESIMONSEN</p> | <p>APPROVED BY: ESIMONSEN</p> |
| <p>PROJECT NAME: TOP OF WALL DETAILS</p> | | | | |
| <p>SCALE: NTS</p> | <p>SHEET NO: 2 OF 3</p> | <p>SIZE: A</p> | <p>TOLERANCES: ANGULAR ±1° LINEAR ±0.06</p> | |



NOTE:

Information and details are only a baseline for system and installation. Modification to meet project requirement is the responsibility of the designer, architect and contractor. MetalTech Global project staff are available to assist throughout the design and build process. © MetalTech Global. All rights reserved.

| | | | | | |
|--|--|-----------------------------|----------------------------------|---|--|
| <p>UNLESS OTHERWISE SPECIFIED DIMENSIONS ARE IN INCHES</p> | <p>DRAWING NAME: WALL TO SOFFIT TRANSITION</p> | | <p>REVISION NO: A</p> | <p>DATED CREATED: 9/17/2014</p> | |
| | <p>DWG NO: MT_FLWP_1103</p> | | <p>CHECKED BY: ESIMONSEN</p> | <p>APPROVED BY: ESIMONSEN</p> | |
| | <p>PROJECT NAME: TOP OF WALL DETAILS</p> | | | | |
| | <p>SCALE: NTS</p> | <p>SHEET NO: 3 OF 3</p> | <p>SIZE: A</p> | <p>TOLERANCES: ANGULAR ±1° LINEAR ±0.06</p> | |

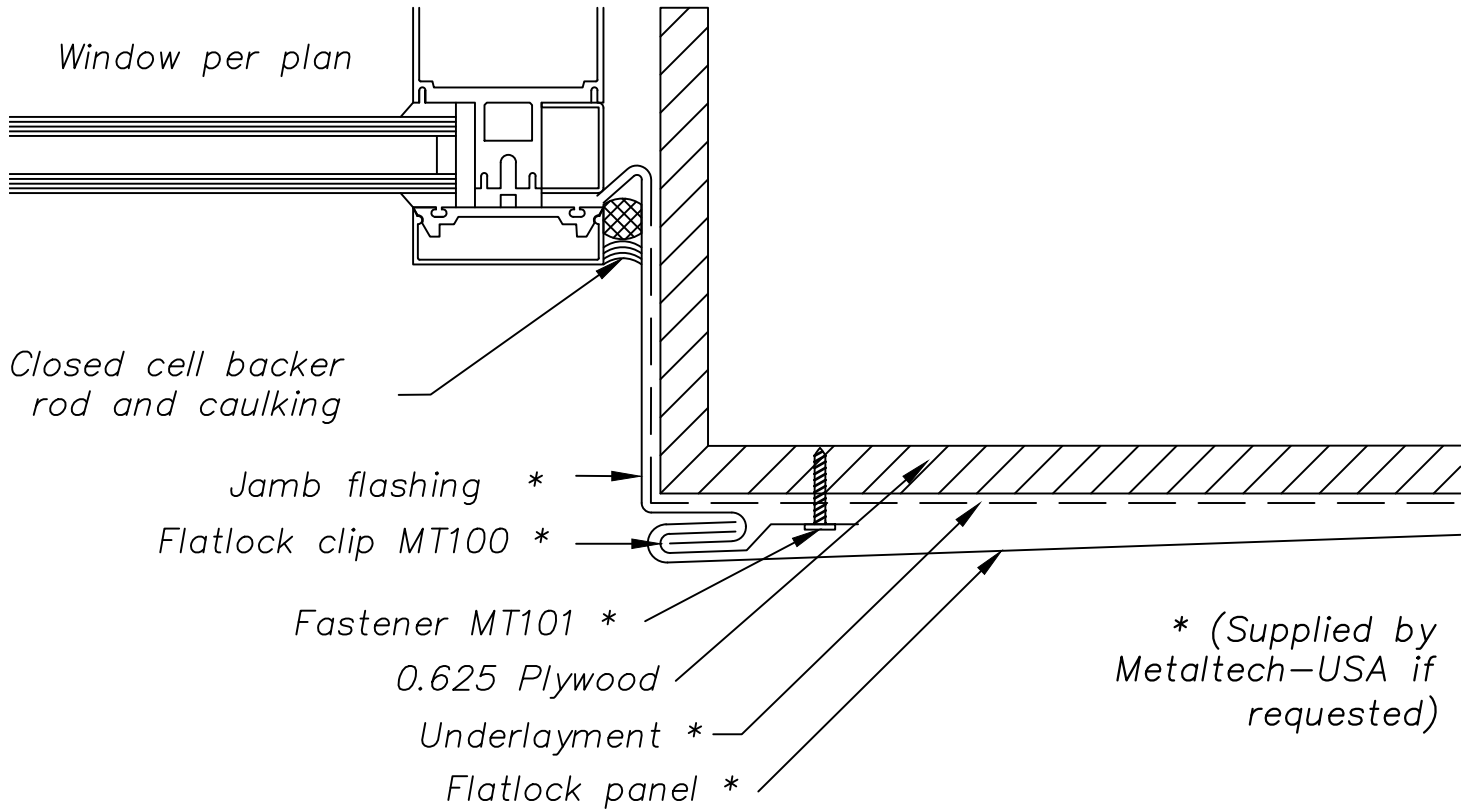


NOTE: Recommended fastener is MT100 Clip. Spacing is determined by project. Panel above is shown as a left to right install.

NOTE:

Information and details are only a baseline for system and installation. Modification to meet project requirement is the responsibility of the designer, architect and contractor. MetalTech Global project staff are available to assist throughout the design and build process. © MetalTech Global. All rights reserved.


| | | | | | | |
|--|---|----------------------|---|---|-----------------------------|--|
| | UNLESS OTHERWISE SPECIFIED DIMENSIONS ARE IN INCHES | | DRAWING NAME: JAMB DETAIL – OPTION 1 | REVISION NO: A | DATED CREATED: 9/29/2014 | |
| | | | DWG NO: MT_FLWP_1201 | CHECKED BY: ESIMONSEN | APPROVED BY: ESIMONSEN | |
| | | | PROJECT NAME: WINDOW DETAILS | | | |
| | SCALE: NTS | SHEET NO: 1 OF 10 | SIZE: A | TOLERANCES: ANGULAR ±1° LINEAR ±0.06 | | |

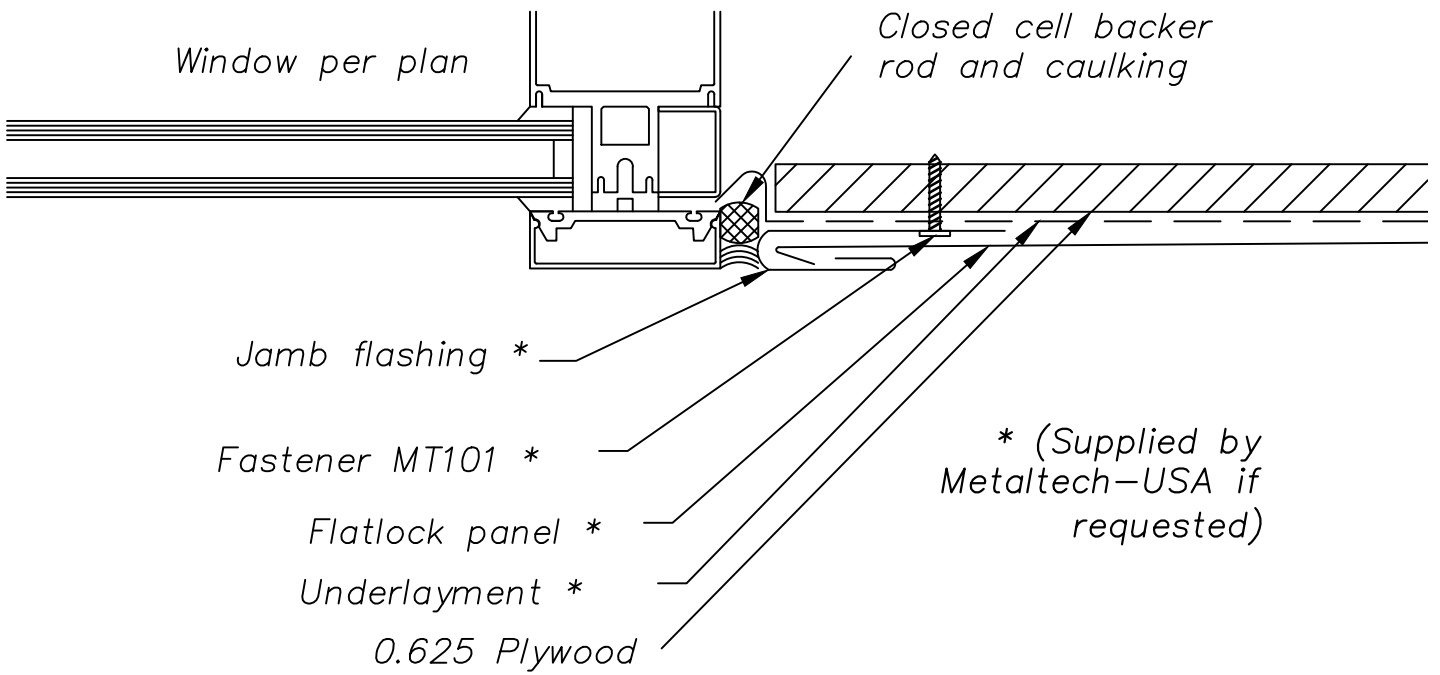


NOTE: Recommended fastener is MT100 Clip. Spacing is determined by project. Panel above is shown as a left to right install.

NOTE:

Information and details are only a baseline for system and installation. Modification to meet project requirement is the responsibility of the designer, architect and contractor. MetalTech Global project staff are available to assist throughout the design and build process. © MetalTech Global. All rights reserved.

| | | | | | |
|---|---|----------------------|---|---|-----------------------------|
|  | UNLESS OTHERWISE SPECIFIED DIMENSIONS ARE IN INCHES | | DRAWING NAME: JAMB DETAIL – OPTION 2 | REVISION NO: A | DATED CREATED: 9/29/2014 |
| | | | DWG NO: MT_FLWP_1202 | CHECKED BY: ESIMONSEN | APPROVED BY: ESIMONSEN |
| | PROJECT NAME: WINDOW DETAILS | | | | |
| | SCALE: NTS | SHEET NO: 2 OF 10 | SIZE: A | TOLERANCES: ANGULAR ±1° LINEAR ±0.06 | |



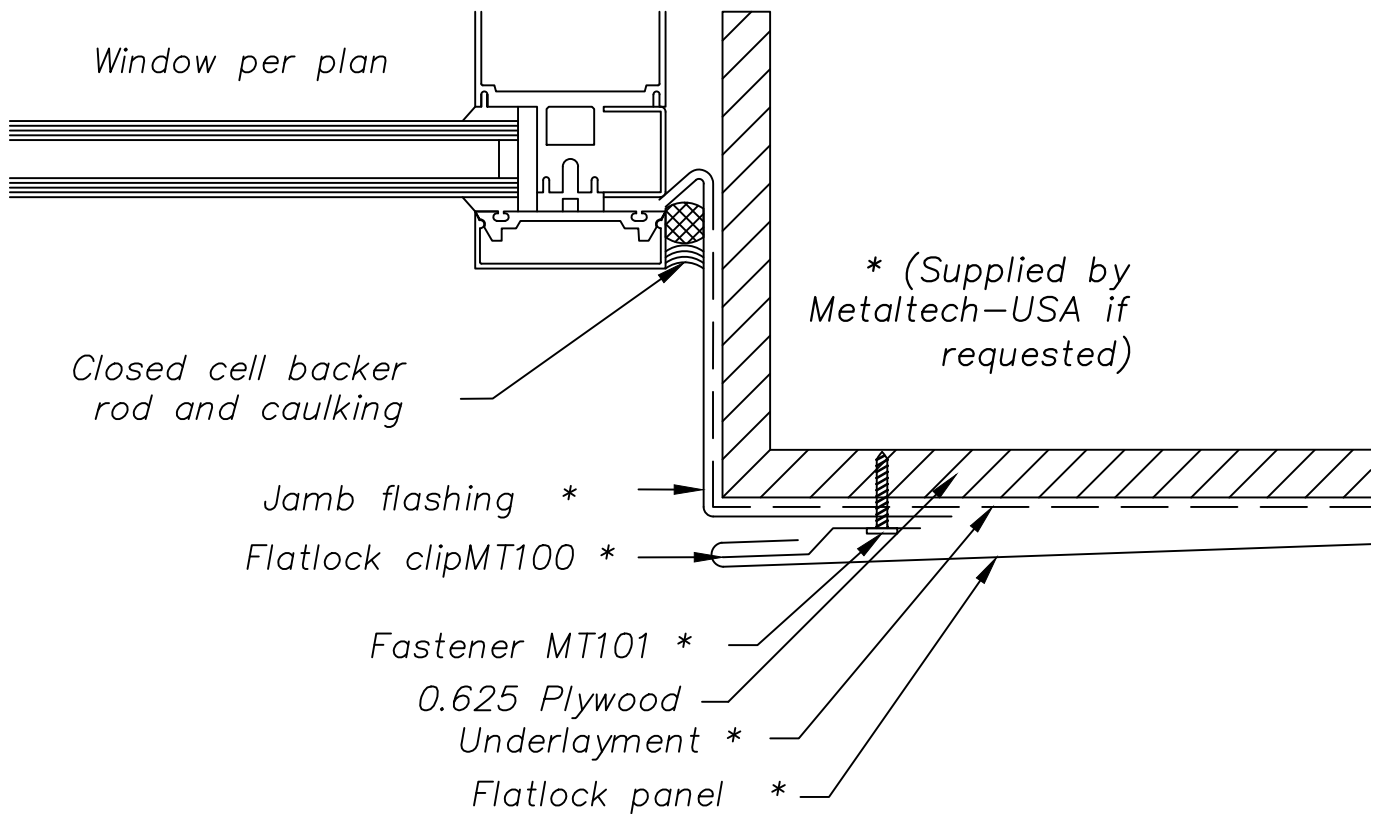
NOTE: Recommended fastener is MT100 Clip. Spacing is determined by project. Panel above is shown as a left to right install.

NOTE:

Information and details are only a baseline for system and installation. Modification to meet project requirement is the responsibility of the designer, architect and contractor. MetalTech Global project staff are available to assist throughout the design and build process. © MetalTech Global. All rights reserved.

| | | | | |
|--|---|------------------------------|----------------------------------|---|
| <p>UNLESS OTHERWISE SPECIFIED DIMENSIONS ARE IN INCHES</p> | <p>DRAWING NAME: JAMB DETAIL – OPTION 3</p> | | <p>REVISION NO: A</p> | <p>DATED CREATED: 9/29/2014</p> |
| | <p>DWG NO: MT_FLWP_1203</p> | | <p>CHECKED BY: ESIMONSEN</p> | <p>APPROVED BY: ESIMONSEN</p> |
| <p>PROJECT NAME: WINDOW DETAILS</p> | | | | |
| <p>SCALE: NTS</p> | | <p>SHEET NO: 3 OF 10</p> | <p>SIZE: A</p> | <p>TOLERANCES: ANGULAR ±1° LINEAR ±0.06</p> |




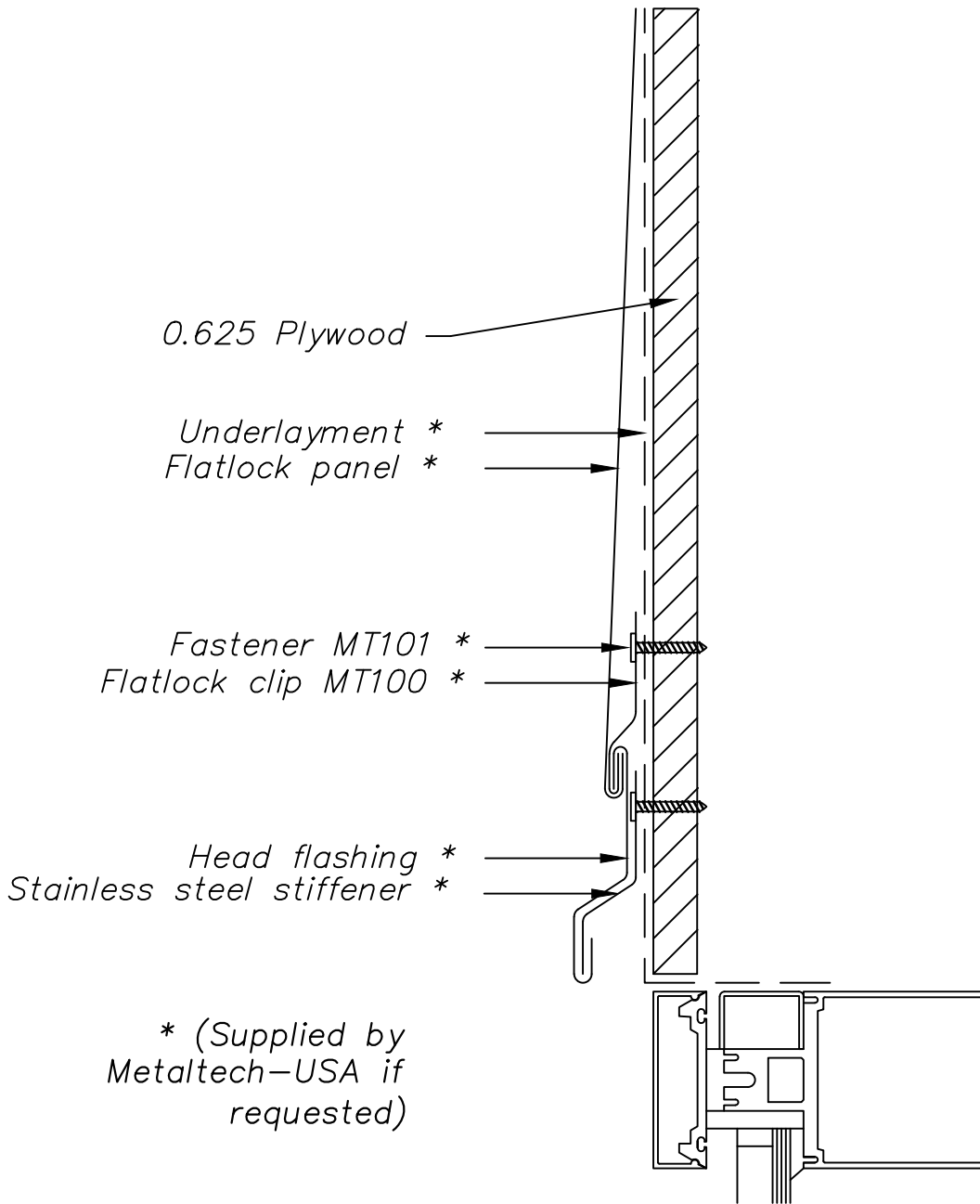


NOTE: Recommended fastener is MT100 Clip. Spacing is determined by project. Panel above is shown as a left to right install.

NOTE:

Information and details are only a baseline for system and installation. Modification to meet project requirement is the responsibility of the designer, architect and contractor. MetalTech Global project staff are available to assist throughout the design and build process. © MetalTech Global. All rights reserved.


| | | | | | |
|---|--|----------------------|---|---|-----------------------------|
|  <p>METALTECH Global a Forza Group Company DESIGNING STRENGTH</p> | UNLESS OTHERWISE SPECIFIED DIMENSIONS ARE IN INCHES | | DRAWING NAME: JAMB DETAIL – OPTION 4 | REVISION NO: A | DATED CREATED: 9/29/2014 |
| | DWG NO: MT_FLWP_1204 | | CHECKED BY: ESIMONSEN | | APPROVED BY: ESIMONSEN |
| | PROJECT NAME: WINDOW DETAILS | | | | |
| | SCALE: NTS | SHEET NO: 4 OF 10 | SIZE: A | TOLERANCES: ANGULAR ±1° LINEAR ±0.06 | |

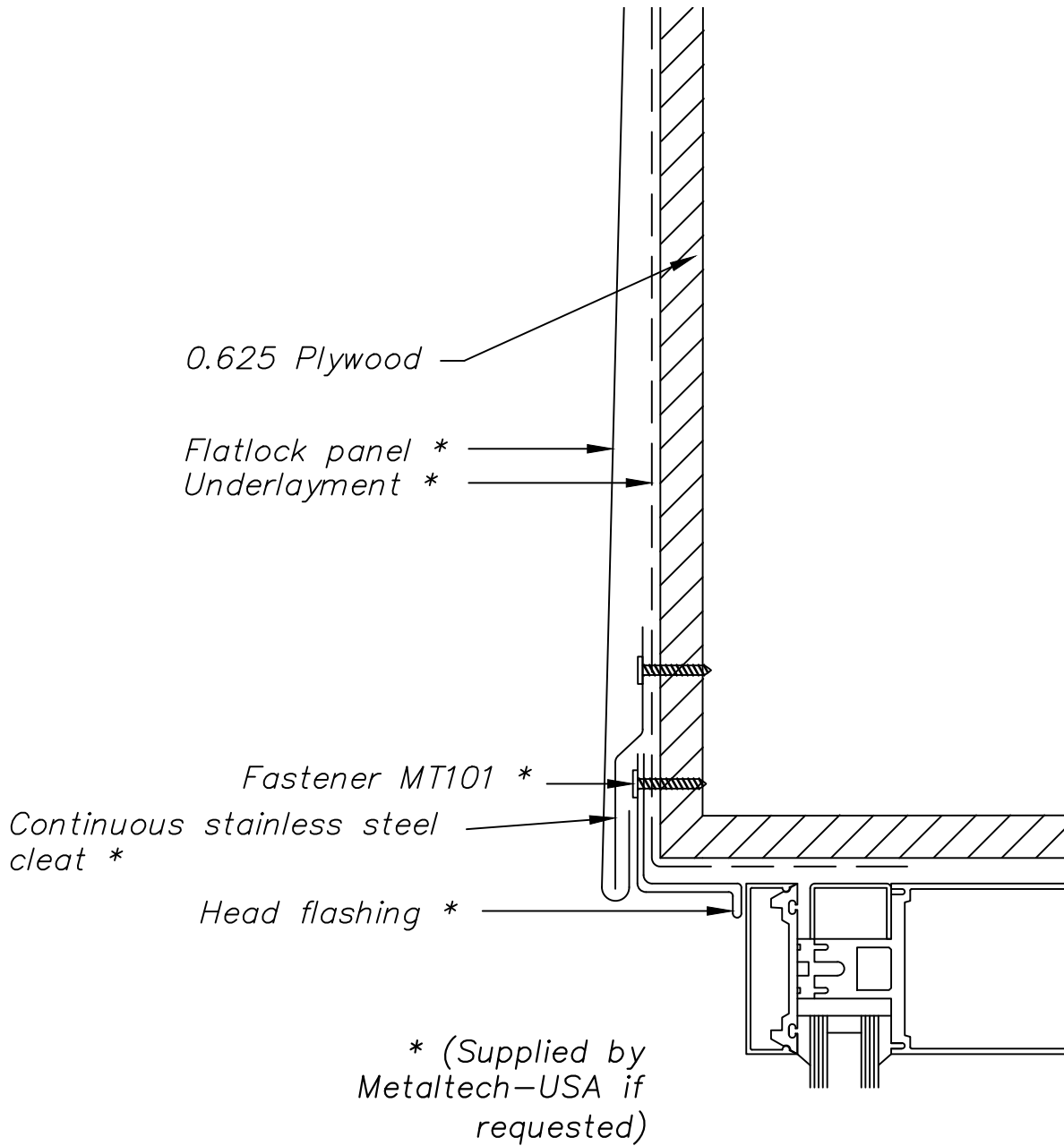


NOTE: Recommended fastener is MT100 Clip. Spacing is determined by project. Panel above is shown as a left to right install.

NOTE:


Information and details are only a baseline for system and installation. Modification to meet project requirement is the responsibility of the designer, architect and contractor. MetalTech Global project staff are available to assist throughout the design and build process. © MetalTech Global. All rights reserved.

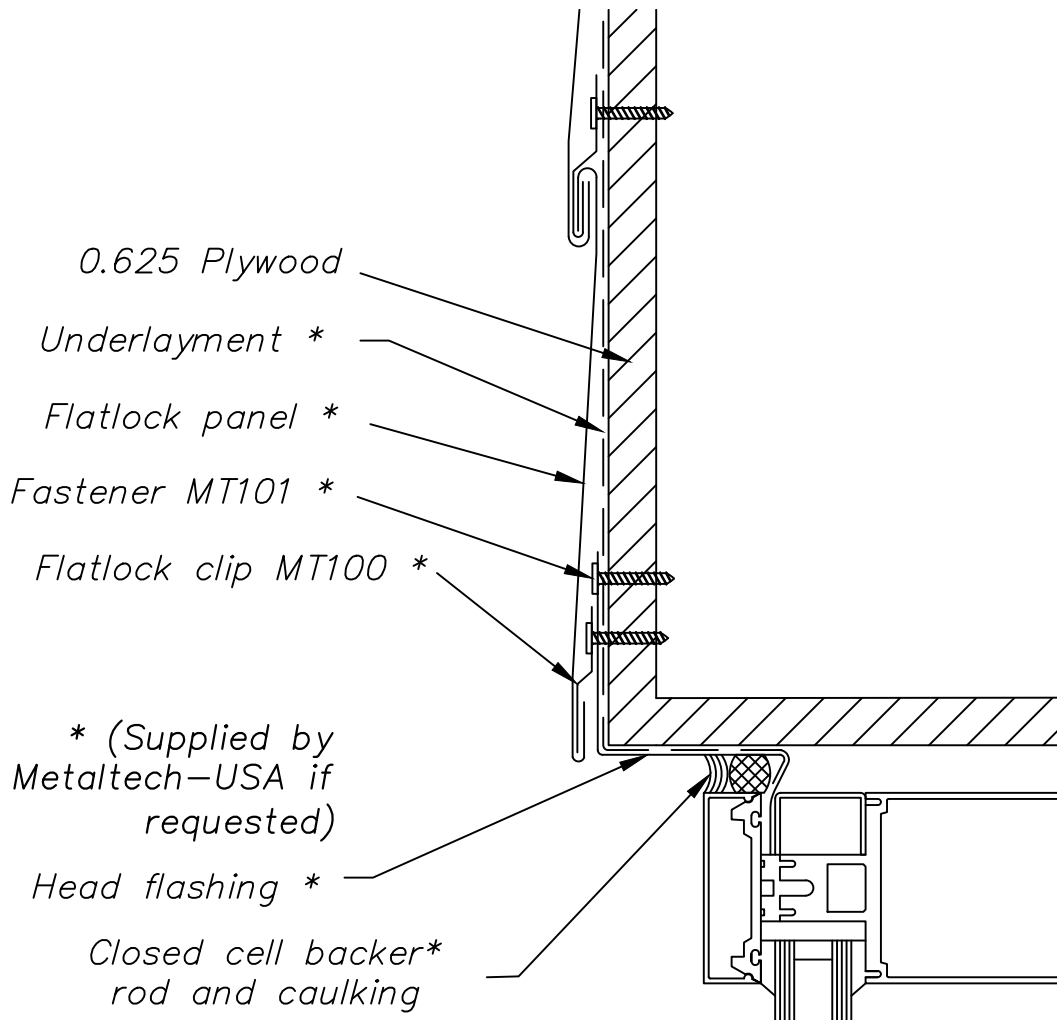
| | | | |
|---|---|--------------------------|-----------------------------|
| UNLESS OTHERWISE SPECIFIED DIMENSIONS ARE IN INCHES | DRAWING NAME: HEAD DETAIL – OPTION 1 | REVISION NO: A | DATED CREATED: 9/29/2014 |
|  | DWG NO: MT_FLWP_1205 | CHECKED BY: ESIMONSEN | APPROVED BY: ESIMONSEN |
| | PROJECT NAME: WINDOW DETAILS | | |
| | SCALE: NTS | SHEET NO: 5 OF 10 | SIZE: A |



NOTE:

Information and details are only a baseline for system and installation. Modification to meet project requirement is the responsibility of the designer, architect and contractor. MetalTech Global project staff are available to assist throughout the design and build process. © MetalTech Global. All rights reserved.

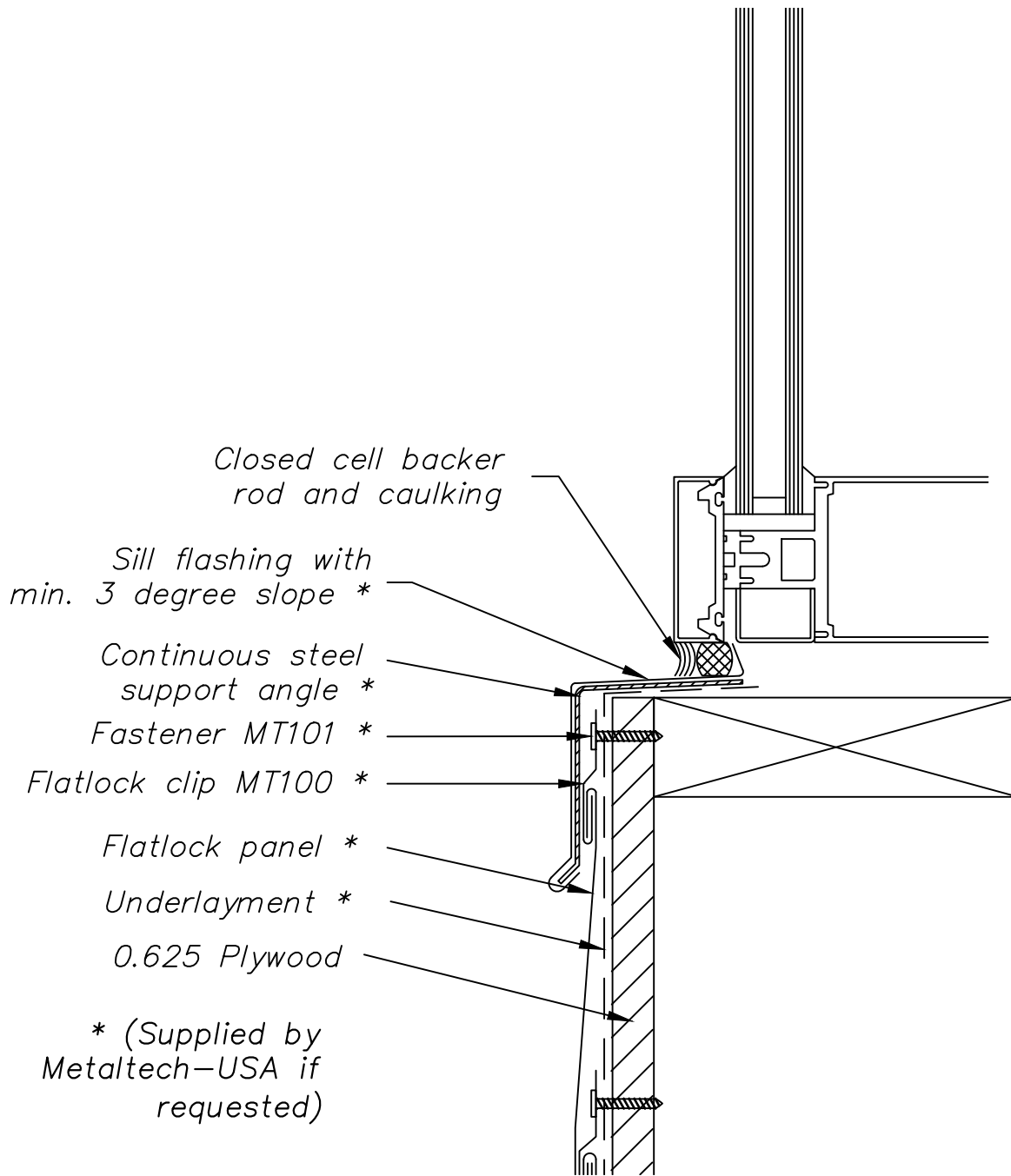
| | | | | |
|---|--|-------------------------------------|---|--|
|  <p>METALTECH Global a Forza Group Company DESIGNING STRENGTH</p> | <p>DRAWING NAME: HEAD DETAIL - OPTION 2</p> | | <p>REVISION NO: A</p> | <p>DATED CREATED: 9/29/2014</p> |
| | <p>DWG NO: MT_FLWP_1206</p> | | <p>CHECKED BY: ESIMONSEN</p> | <p>APPROVED BY: ESIMONSEN</p> |
| | <p>PROJECT NAME: WINDOW DETAILS</p> | | | |
| | <p>SCALE: NTS</p> | <p>SHEET NO: 6 OF 10</p> | <p>SIZE: A</p> | <p>TOLERANCES: ANGULAR ±1° LINEAR ±0.06</p> |



NOTE:

Information and details are only a baseline for system and installation. Modification to meet project requirement is the responsibility of the designer, architect and contractor. MetalTech Global project staff are available to assist throughout the design and build process. © MetalTech Global. All rights reserved.

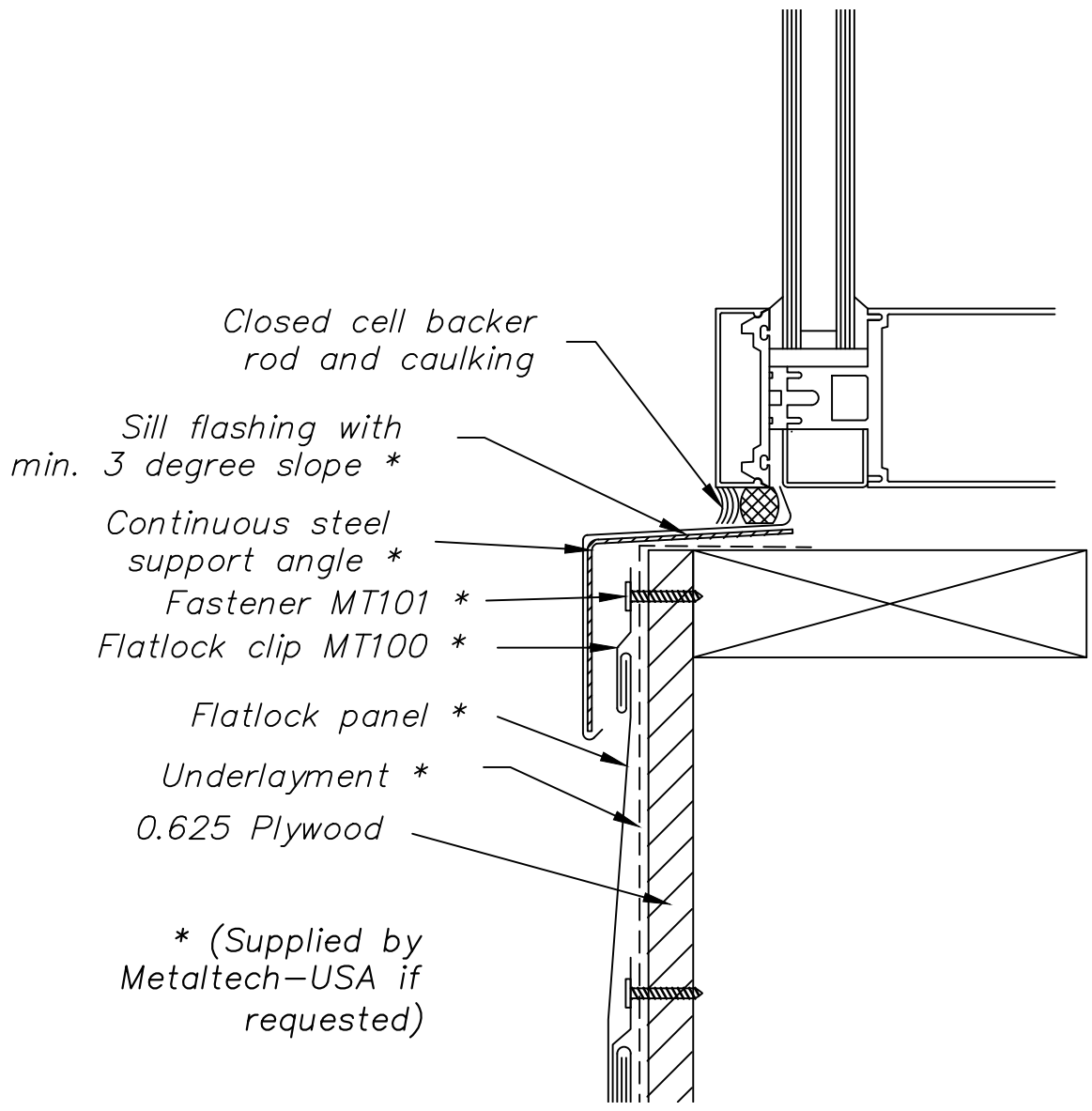
| | | | | | |
|--|---|------------------------------|----------------------------------|---|--|
| <p>UNLESS OTHERWISE SPECIFIED DIMENSIONS ARE IN INCHES</p> | <p>DRAWING NAME: HEAD DETAIL – OPTION 3</p> | | <p>REVISION NO: A</p> | <p>DATED CREATED: 9/29/2014</p> | |
| | <p>DWG NO: MT_FLWP_1207</p> | | <p>CHECKED BY: ESIMONSEN</p> | <p>APPROVED BY: ESIMONSEN</p> | |
| | <p>PROJECT NAME: WINDOW DETAILS</p> | | | | |
| | <p>SCALE: NTS</p> | <p>SHEET NO: 7 OF 10</p> | <p>SIZE: A</p> | <p>TOLERANCES: ANGULAR ±1° LINEAR ±0.06</p> | |



NOTE:


Information and details are only a baseline for system and installation. Modification to meet project requirement is the responsibility of the designer, architect and contractor. MetalTech Global project staff are available to assist throughout the design and build process. © MetalTech Global. All rights reserved.

| | | | | | | |
|--|--|-----------------------------|--|--|------------------------------------|--|
| | UNLESS OTHERWISE SPECIFIED DIMENSIONS ARE IN INCHES | | DRAWING NAME: SILL DETAIL – OPTION 1 | REVISION NO: A | DATED CREATED: 9/29/2014 | |
| | | | DWG NO: MT_FLWP_1208 | CHECKED BY: ESIMONSEN | APPROVED BY: ESIMONSEN | |
| | | | PROJECT NAME: WINDOW DETAILS | | | |
| | SCALE: NTS | SHEET NO: 8 OF 10 | SIZE: A | TOLERANCES: ANGULAR ±1° LINEAR ±0.06 | | |



NOTE:

Information and details are only a baseline for system and installation. Modification to meet project requirement is the responsibility of the designer, architect and contractor. MetalTech Global project staff are available to assist throughout the design and build process. © MetalTech Global. All rights reserved.

| | | | |
|---|---|----------------------------------|-------------------------------------|
| <p>UNLESS OTHERWISE SPECIFIED DIMENSIONS ARE IN INCHES</p> | <p>DRAWING NAME: SILL DETAIL – OPTION 2</p> | <p>REVISION NO: A</p> | <p>DATED CREATED: 9/29/2014</p> |
|  | <p>DWG NO: MT_FLWP_1209</p> | <p>CHECKED BY: ESIMONSEN</p> | <p>APPROVED BY: ESIMONSEN</p> |
| | <p>PROJECT NAME: WINDOW DETAILS</p> | | |
| | <p>SCALE: NTS</p> | <p>SHEET NO: 9 OF 10</p> | <p>SIZE: A</p> |

Sill flashing with
min. 3 degree slope *

Continuous steel
support angle *

Fastener MT101 *

Sill flashing *

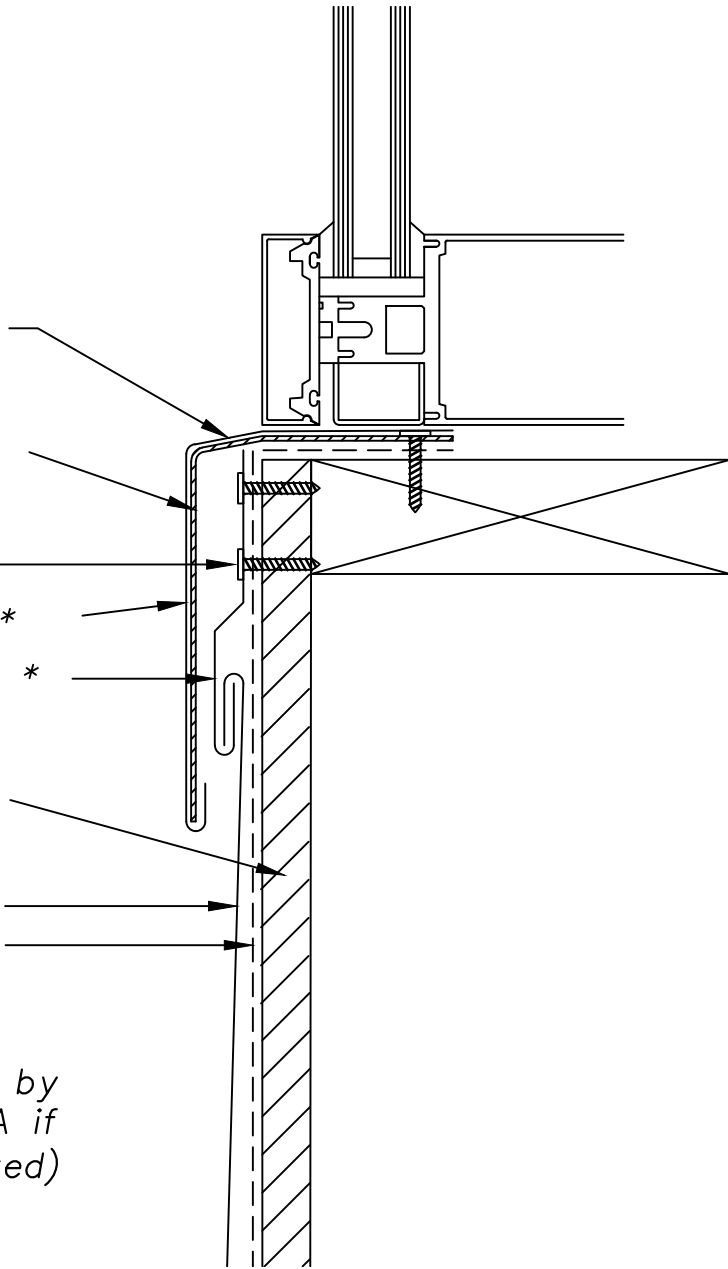
Flatlock clip MT100 *

0.625 Plywood

Flatlock panel *


Underlayment *

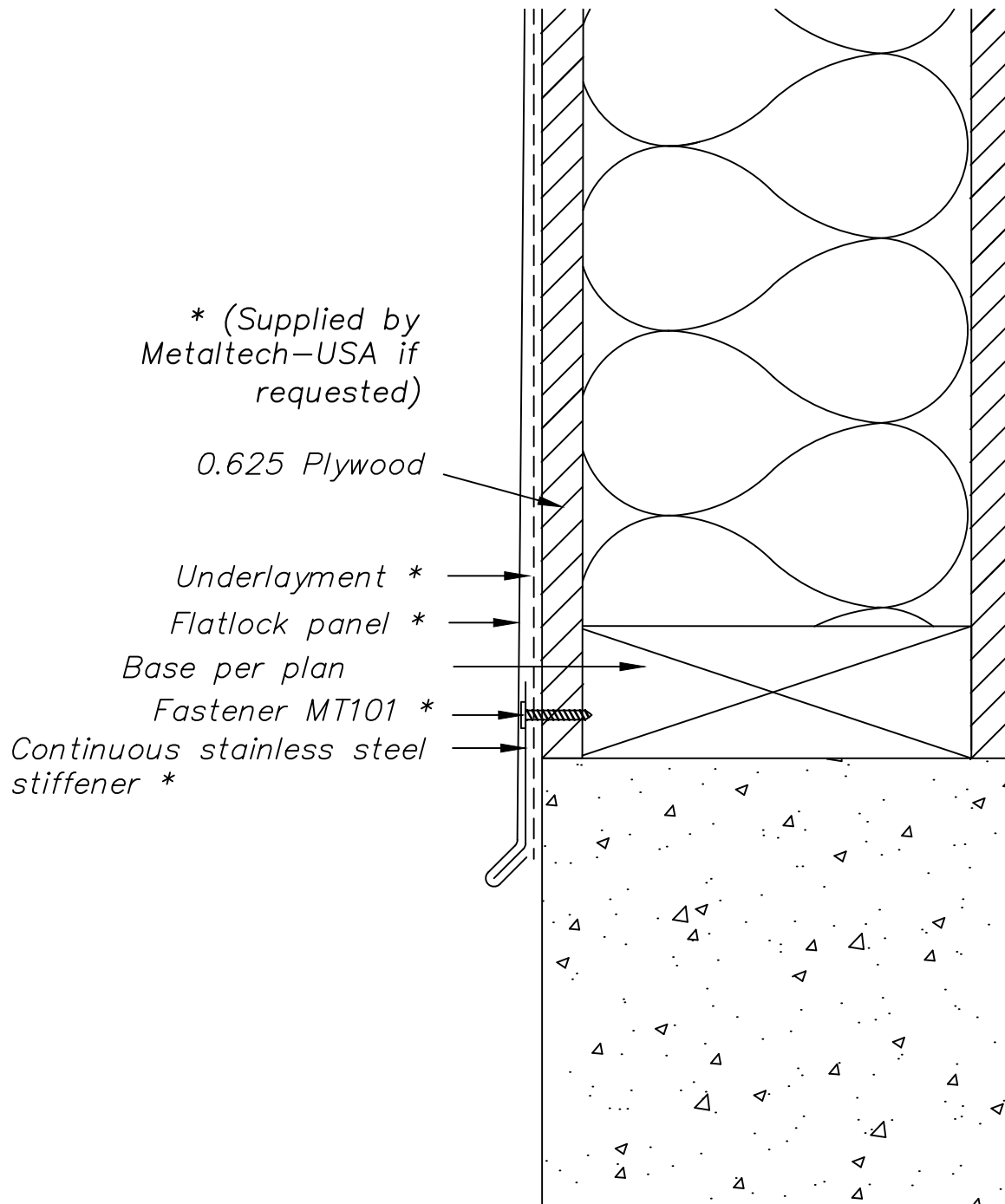
* (Supplied by
Metaltech-USA if
requested)



NOTE:


Information and details are only a baseline for system and installation. Modification to meet project requirement is the responsibility of the designer, architect and contractor. MetalTech Global project staff are available to assist throughout the design and build process. © MetalTech Global. All rights reserved.

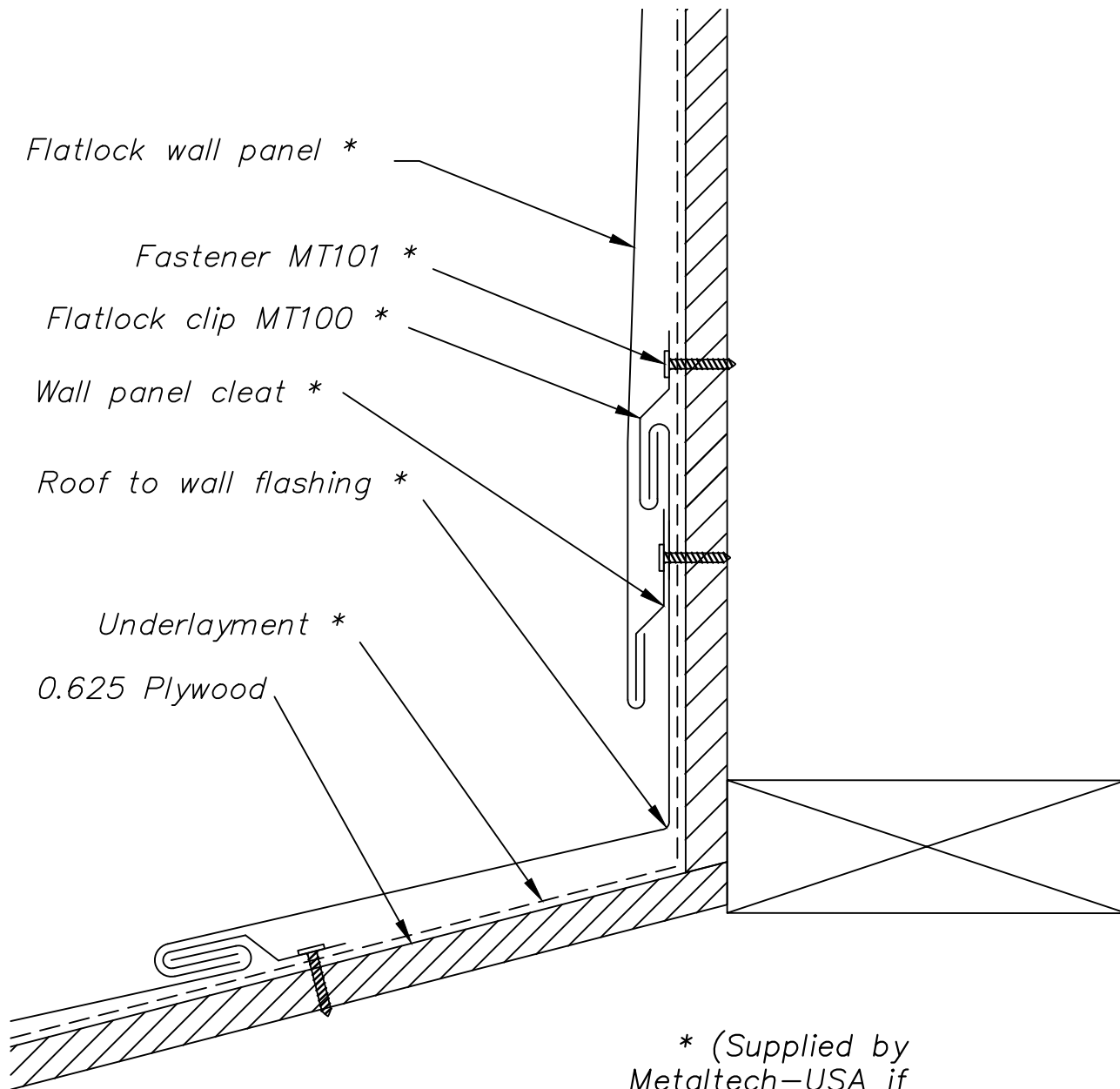
| | | | | | | |
|---|--|-----------------------|---|---|-----------------------------|--|
|  | UNLESS OTHERWISE SPECIFIED DIMENSIONS ARE IN INCHES | | DRAWING NAME: SILL DETAIL – OPTION 3 | REVISION NO: A | DATED CREATED: 9/29/2014 | |
| | | | DWG NO: MT_FLWP_1210 | CHECKED BY: ESIMONSEN | APPROVED BY: ESIMONSEN | |
| | | | PROJECT NAME: WINDOW DETAILS | | | |
| | SCALE: NTS | SHEET NO: 10 OF 10 | SIZE: A | TOLERANCES: ANGULAR ±1° LINEAR ±0.06 | | |



NOTE:

Information and details are only a baseline for system and installation. Modification to meet project requirement is the responsibility of the designer, architect and contractor. MetalTech Global project staff are available to assist throughout the design and build process. © MetalTech Global. All rights reserved.


| | | | |
|---|---|--------------------------|-----------------------------|
| UNLESS OTHERWISE SPECIFIED DIMENSIONS ARE IN INCHES | DRAWING NAME: BASE DETAIL – OPTION 1 | REVISION NO: B | DATED CREATED: 9/30/2014 |
|  | DWG NO: MT_FLWP_1301 | CHECKED BY: ESIMONSEN | APPROVED BY: ESIMONSEN |
| | PROJECT NAME: BOTTOM OF WALL DETAILS | | |
| | SCALE: NTS | SHEET NO: 1 OF 4 | SIZE: A |

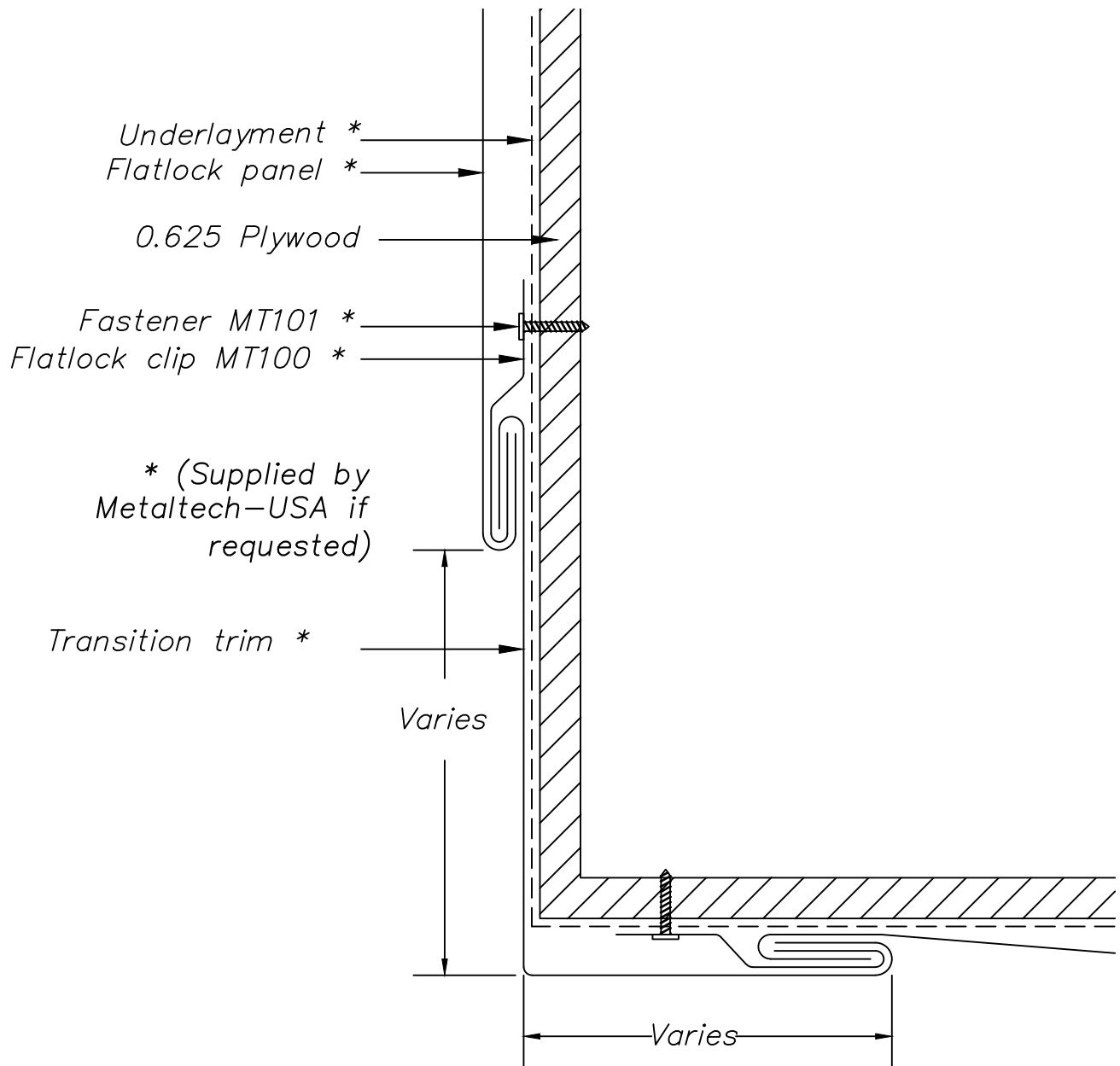


* (Supplied by Metaltech-USA if requested)

NOTE:


Information and details are only a baseline for system and installation. Modification to meet project requirement is the responsibility of the designer, architect and contractor. MetalTech Global project staff are available to assist throughout the design and build process. © MetalTech Global. All rights reserved.

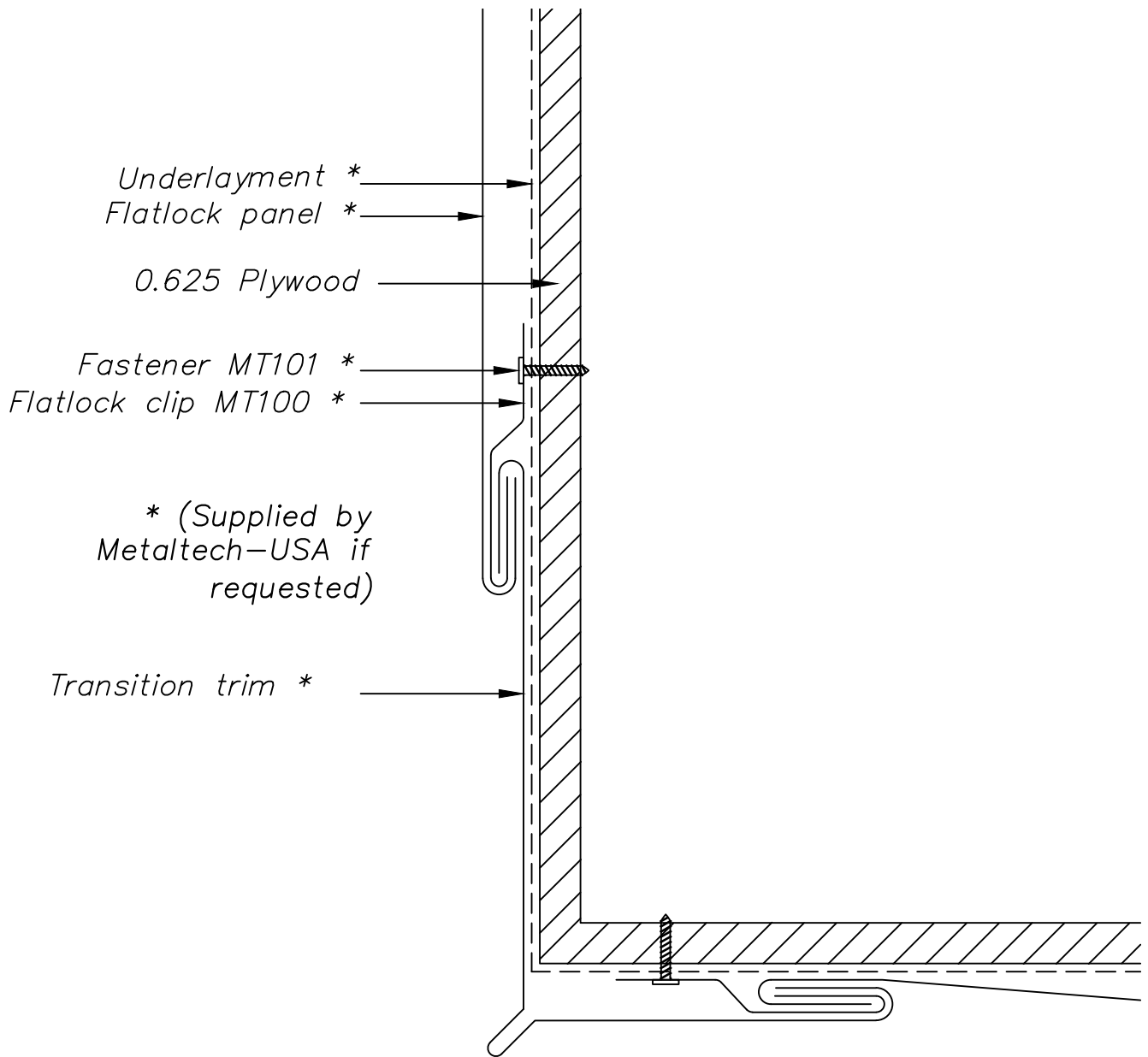
| | | | |
|---|---|--------------------------|-----------------------------|
| UNLESS OTHERWISE SPECIFIED DIMENSIONS ARE IN INCHES | DRAWING NAME: BOTTOM OF WALL @ ROOF | REVISION NO: B | DATED CREATED: 9/30/2014 |
|  | DWG NO: MT_FLWP_1302 | CHECKED BY: ESIMONSEN | APPROVED BY: ESIMONSEN |
| | PROJECT NAME: BOTTOM OF WALL DETAILS | | |
| | SCALE: NTS | SHEET NO: 2 OF 4 | SIZE: A |



NOTE:


Information and details are only a baseline for system and installation. Modification to meet project requirement is the responsibility of the designer, architect and contractor. MetalTech Global project staff are available to assist throughout the design and build process. © MetalTech Global. All rights reserved.

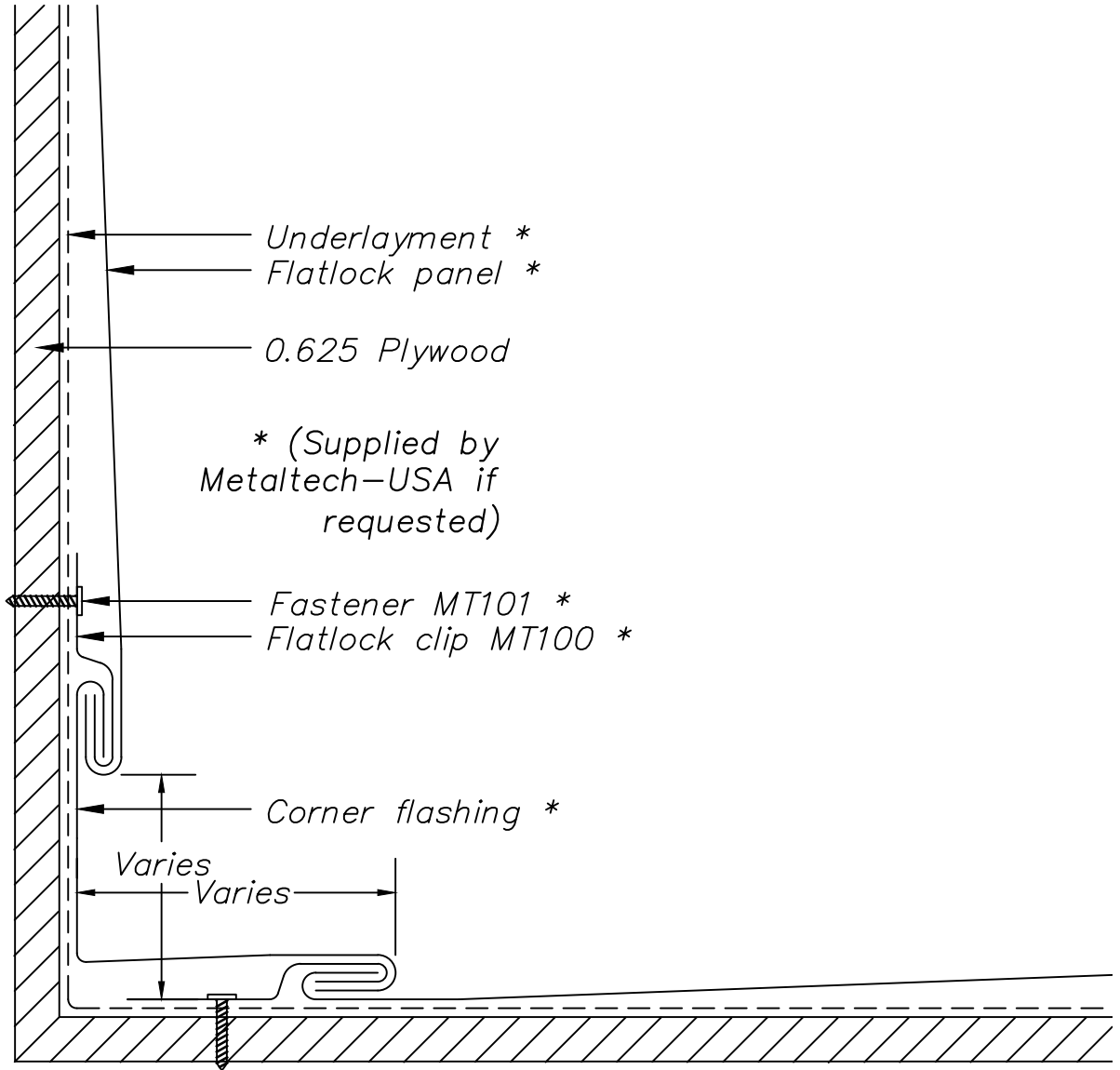
| | | | |
|---|--|--------------------------|-----------------------------|
| UNLESS OTHERWISE SPECIFIED DIMENSIONS ARE IN INCHES | DRAWING NAME: BOTTOM OF WALL @ SOFFIT- OPTION 1 | REVISION NO: - | DATED CREATED: 5/22/2015 |
|  | DWG NO: MT_FLWP_1303 | CHECKED BY: ESIMONSEN | APPROVED BY: ESIMONSEN |
| | PROJECT NAME: BOTTOM OF WALL DETAILS | | |
| | SCALE: NTS | SHEET NO: 3 OF 4 | SIZE: A |



NOTE:


Information and details are only a baseline for system and installation. Modification to meet project requirement is the responsibility of the designer, architect and contractor. MetalTech Global project staff are available to assist throughout the design and build process. © MetalTech Global. All rights reserved.

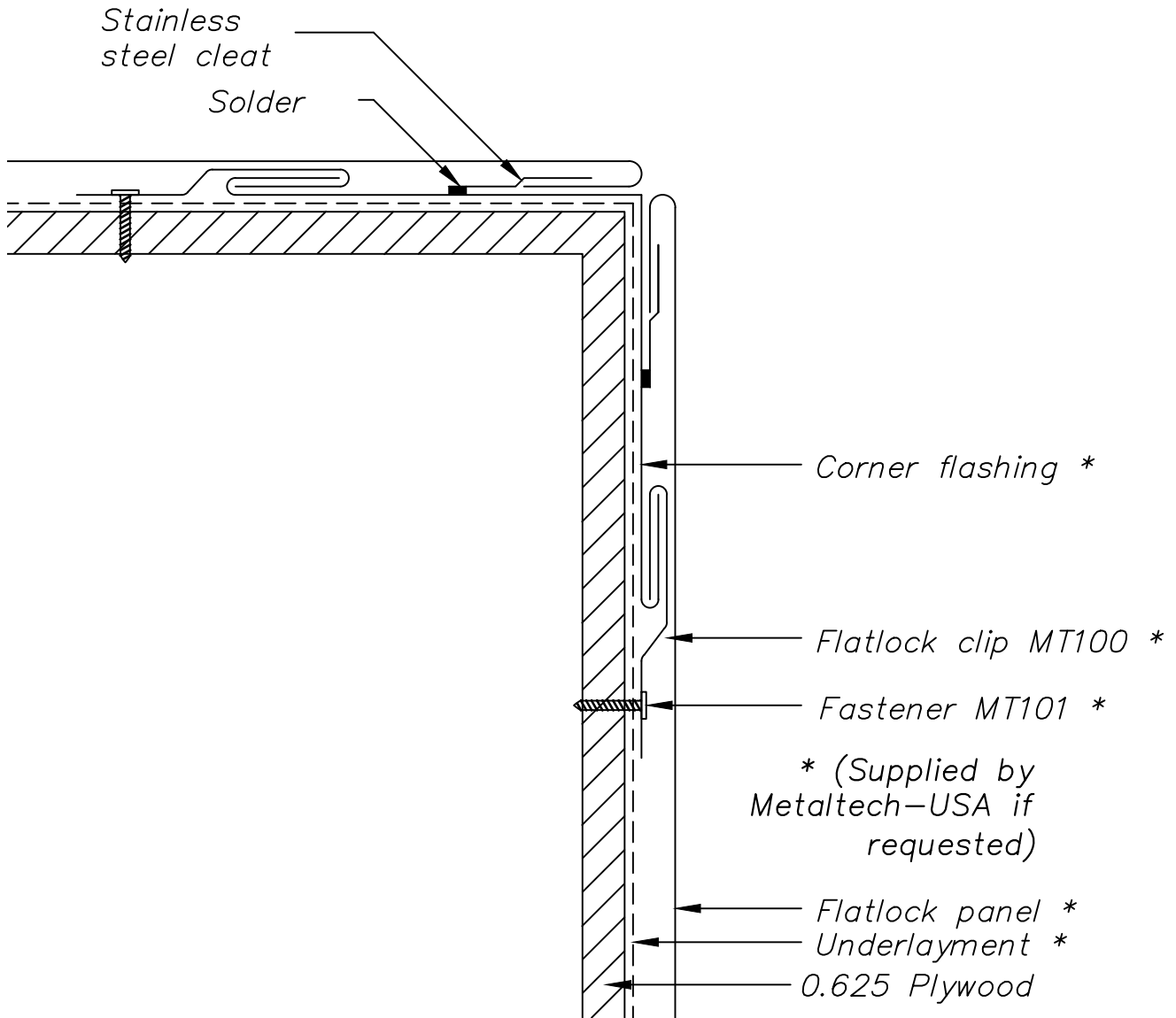
| | | | |
|---|--|--------------------------|-----------------------------|
| UNLESS OTHERWISE SPECIFIED DIMENSIONS ARE IN INCHES | DRAWING NAME: BOTTOM OF WALL @ SOFFIT- OPTION 2 | REVISION NO: - | DATED CREATED: 5/22/2015 |
|  | DWG NO: MT_FLWP_1304 | CHECKED BY: ESIMONSEN | APPROVED BY: ESIMONSEN |
| | PROJECT NAME: BOTTOM OF WALL DETAILS | | |
| | SCALE: NTS | SHEET NO: 4 OF 4 | SIZE: A |



NOTE:

Information and details are only a baseline for system and installation. Modification to meet project requirement is the responsibility of the designer, architect and contractor. MetalTech Global project staff are available to assist throughout the design and build process. © MetalTech Global. All rights reserved.

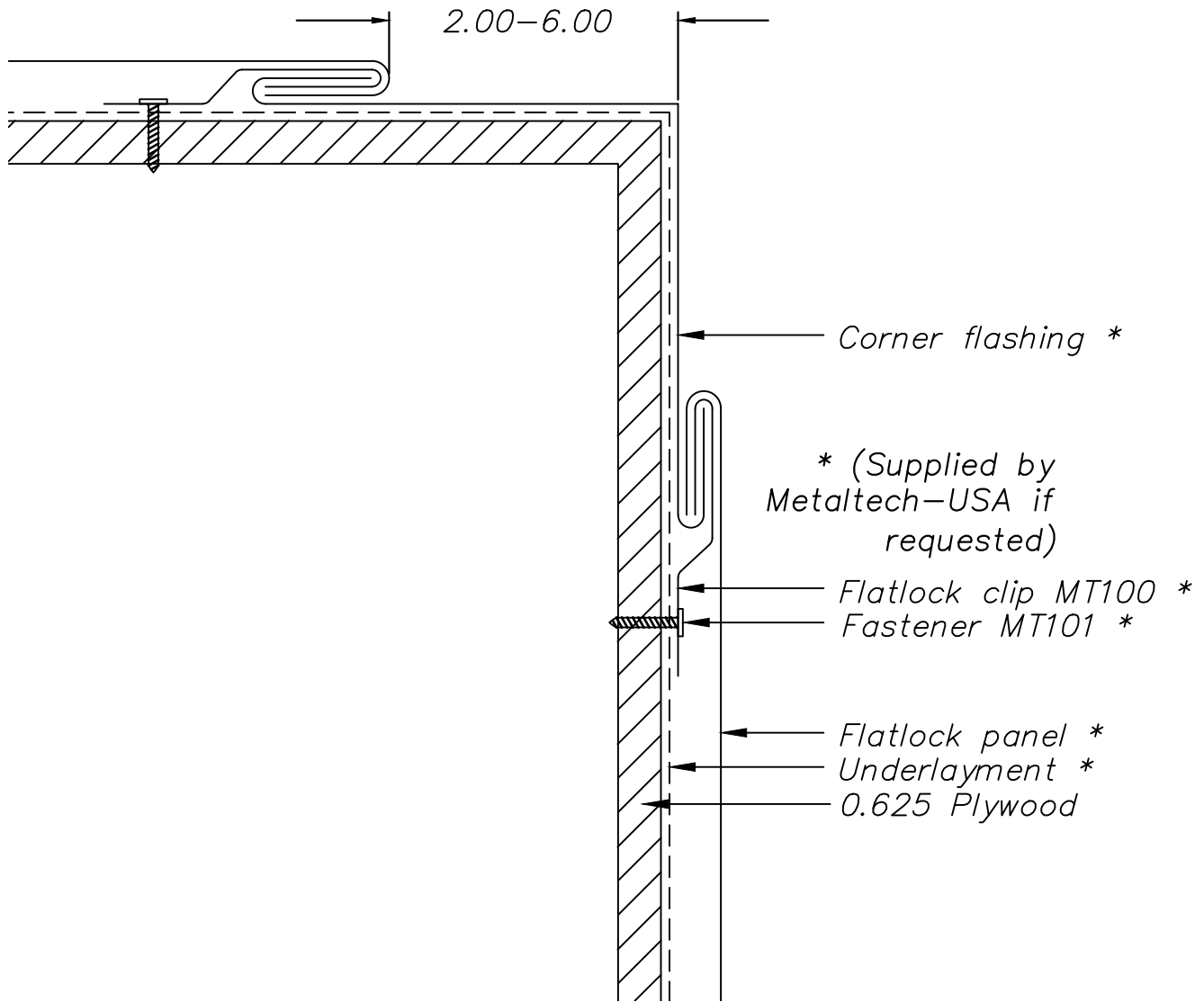
| | | | |
|---|---|----------------------------------|-------------------------------------|
| <p>UNLESS OTHERWISE SPECIFIED DIMENSIONS ARE IN INCHES</p> | <p>DRAWING NAME: INTERIOR CORNER</p> | <p>REVISION NO: A</p> | <p>DATED CREATED: 9/30/2014</p> |
|  <p>METALTECH Global a Forza Group Company DESIGNING STRENGTH</p> | <p>DWG NO: MT_FLWP_1401</p> | <p>CHECKED BY: ESIMONSEN</p> | <p>APPROVED BY: ESIMONSEN</p> |
| | <p>PROJECT NAME: INTERIOR DETAILS</p> | | |
| | <p>SCALE: NTS</p> | <p>SHEET NO: 1 OF 1</p> | <p>SIZE: A</p> |



NOTE:


Information and details are only a baseline for system and installation. Modification to meet project requirement is the responsibility of the designer, architect and contractor. MetalTech Global project staff are available to assist throughout the design and build process. © MetalTech Global. All rights reserved.

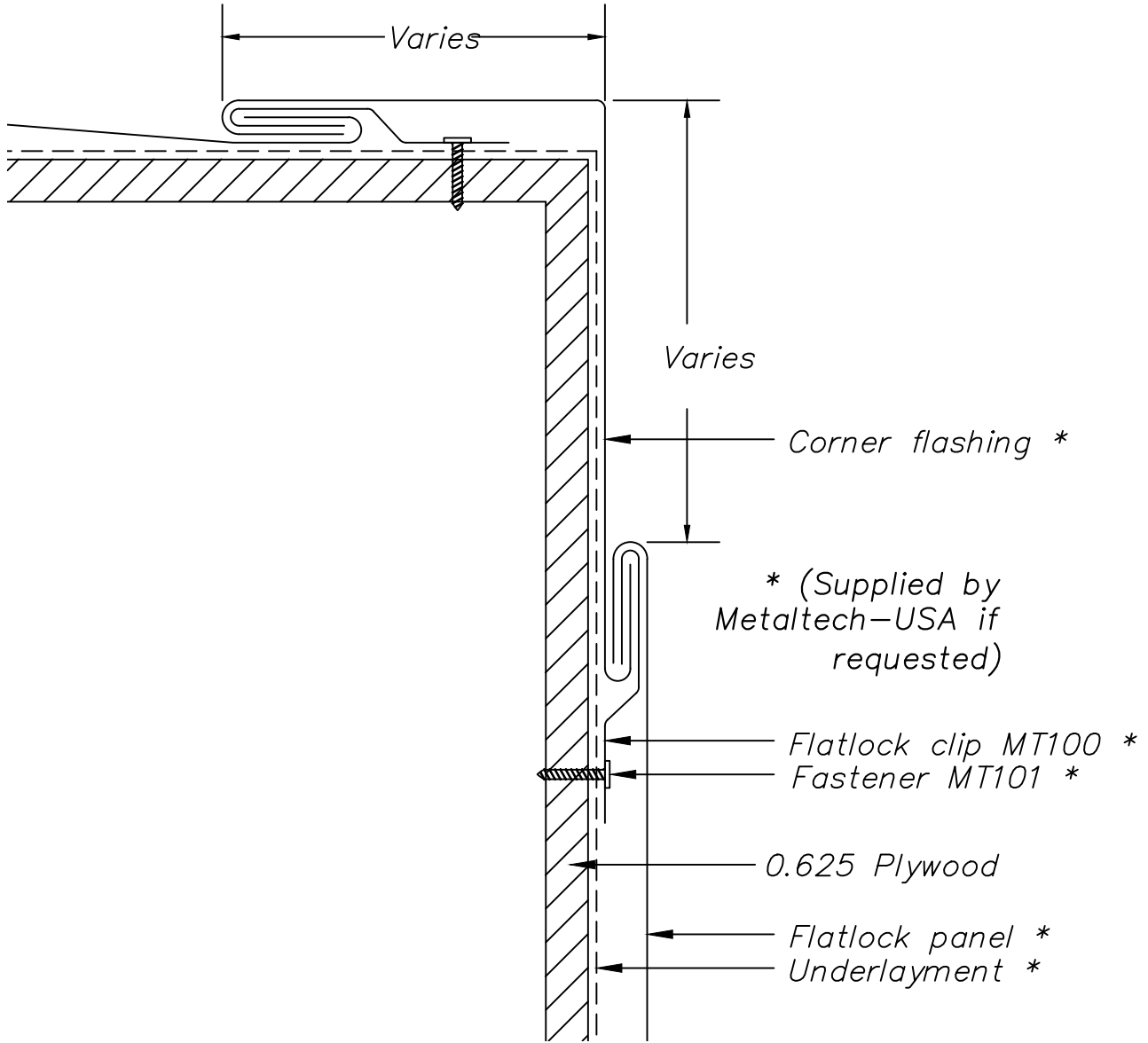
| | | | | | |
|--|---|-----------------------------|----------------------------------|---|--|
| <p>UNLESS OTHERWISE SPECIFIED DIMENSIONS ARE IN INCHES</p> | <p>DRAWING NAME: EXTERIOR CORNER - OPTION 1</p> | | <p>REVISION NO: A</p> | <p>DATED CREATED: 9/30/2014</p> | |
| | <p>DWG NO: MT_FLWP_1501</p> | | <p>CHECKED BY: ESIMONSEN</p> | <p>APPROVED BY: ESIMONSEN</p> | |
| | <p>PROJECT NAME: EXTERIOR DETAILS</p> | | | | |
| | <p>SCALE: NTS</p> | <p>SHEET NO: 1 OF 3</p> | <p>SIZE: A</p> | <p>TOLERANCES: ANGULAR ±1° LINEAR ±0.06</p> | |



NOTE:

Information and details are only a baseline for system and installation. Modification to meet project requirement is the responsibility of the designer, architect and contractor. MetalTech Global project staff are available to assist throughout the design and build process. © MetalTech Global. All rights reserved.

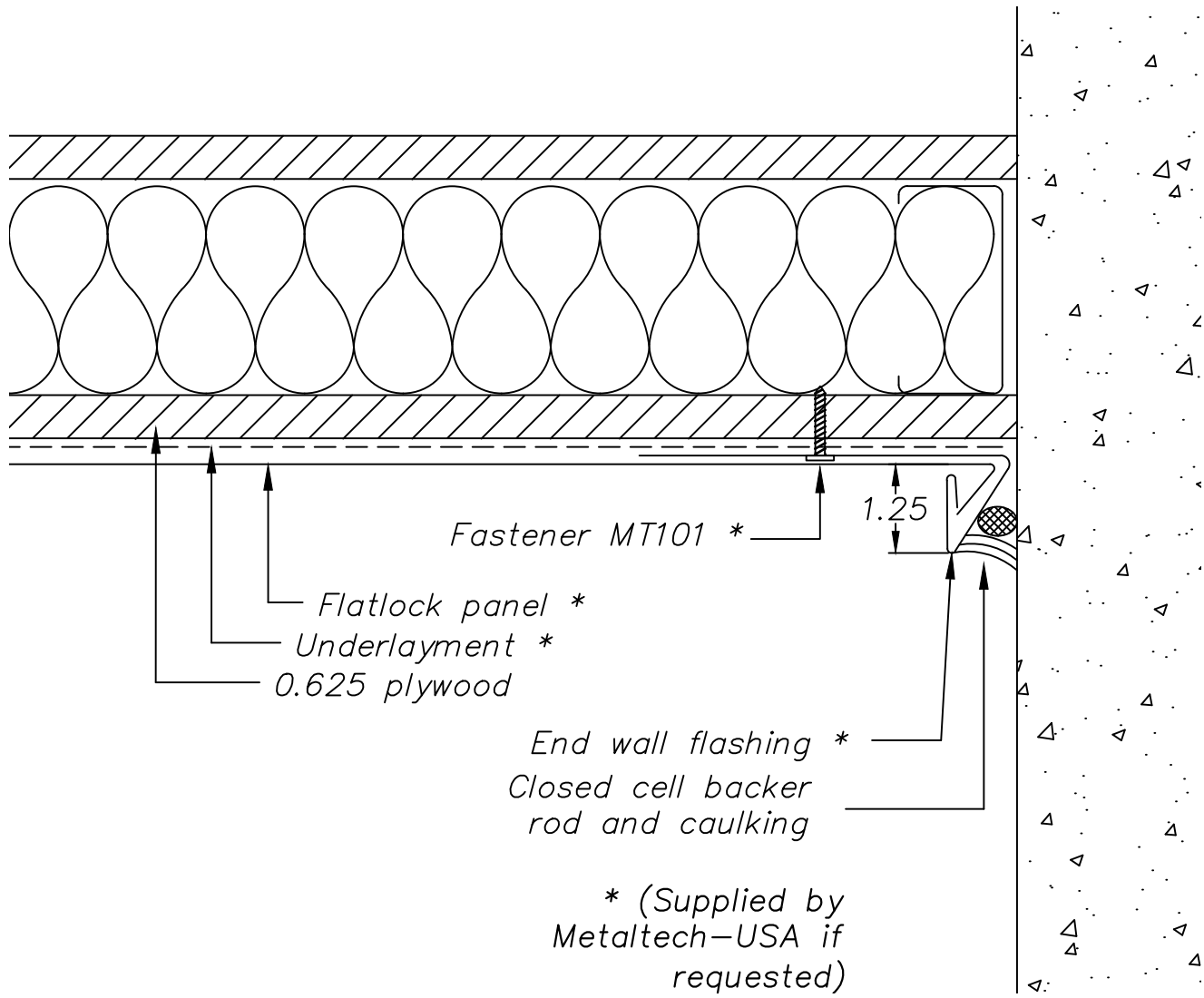
| | | | |
|---|---|--------------------------|---|
| UNLESS OTHERWISE SPECIFIED DIMENSIONS ARE IN INCHES | DRAWING NAME: EXTERIOR CORNER - OPTION 2 | REVISION NO: A | DATED CREATED: 9/30/2014 |
|  | DWG NO: MT_FLWP_1502 | CHECKED BY: ESIMONSEN | APPROVED BY: ESIMONSEN |
| | PROJECT NAME: EXTERIOR DETAILS | | |
| | SCALE: NTS | SHEET NO: 2 OF 3 | SIZE: A TOLERANCES: ANGULAR ±1° LINEAR ±0.06 |



NOTE:

Information and details are only a baseline for system and installation. Modification to meet project requirement is the responsibility of the designer, architect and contractor. MetalTech Global project staff are available to assist throughout the design and build process. © MetalTech Global. All rights reserved.

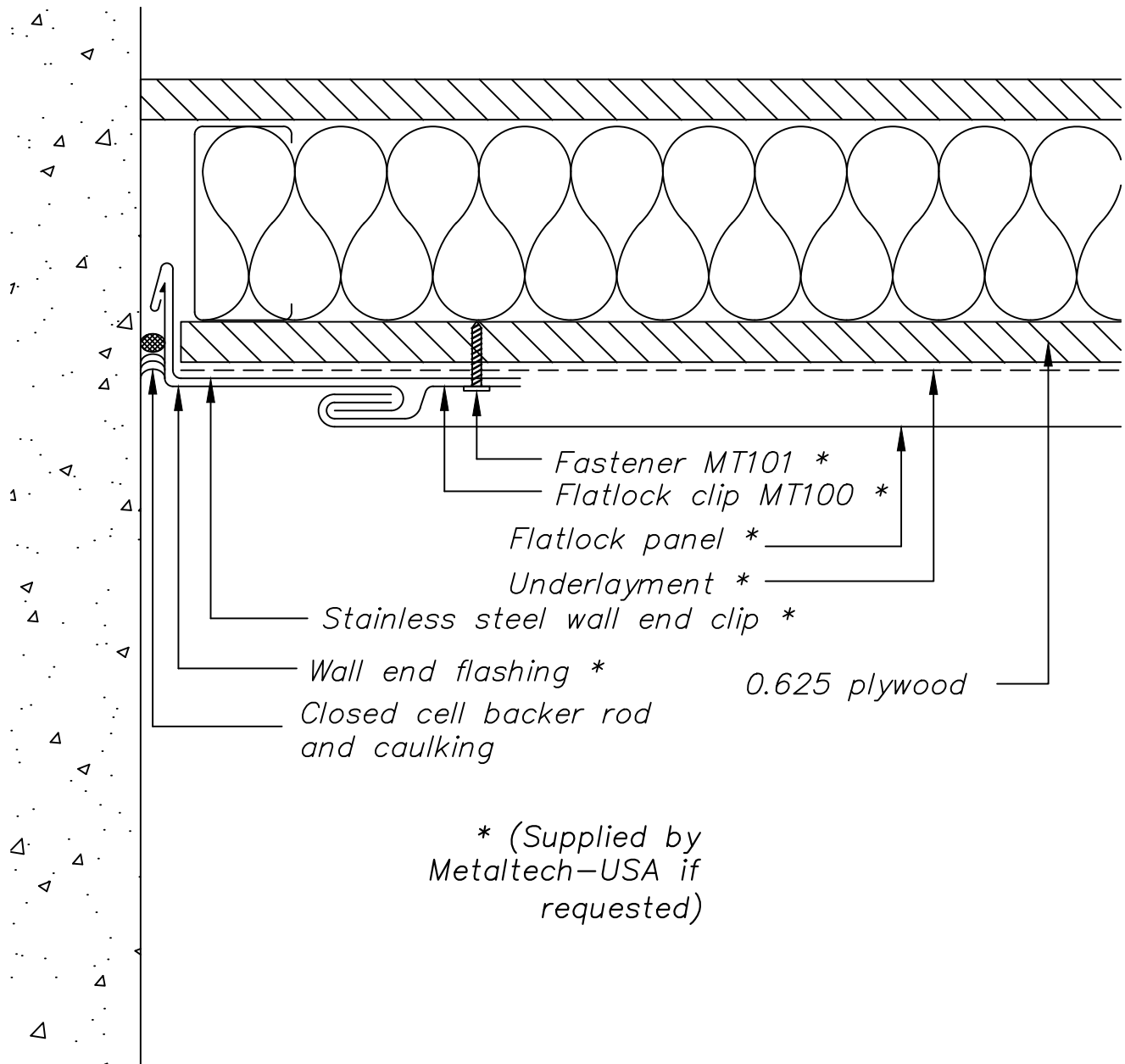
| | | | | | |
|--|---|-----------------------------|----------------------------------|---|--|
| <p>UNLESS OTHERWISE SPECIFIED DIMENSIONS ARE IN INCHES</p> | <p>DRAWING NAME: EXTERIOR CORNER – OPTION 3</p> | | <p>REVISION NO: A</p> | <p>DATED CREATED: 9/30/2014</p> | |
| | <p>DWG NO: MT_FLWP_1503</p> | | <p>CHECKED BY: ESIMONSEN</p> | <p>APPROVED BY: ESIMONSEN</p> | |
| | <p>PROJECT NAME: EXTERIOR DETAILS</p> | | | | |
| | <p>SCALE: NTS</p> | <p>SHEET NO: 3 OF 3</p> | <p>SIZE: A</p> | <p>TOLERANCES: ANGULAR ±1° LINEAR ±0.06</p> | |



NOTE:

Information and details are only a baseline for system and installation. Modification to meet project requirement is the responsibility of the designer, architect and contractor. MetalTech Global project staff are available to assist throughout the design and build process. © MetalTech Global. All rights reserved.

| | | | | |
|--|---|----------------------------|---------------------------------|--|
| | DRAWING NAME: END OF WALL DETAIL – OPTION 1 | | REVISION NO: A | DATED CREATED: 10/1/2014 |
| | DWG NO: MT_FLWP_1601 | | CHECKED BY: ESIMONSEN | APPROVED BY: ESIMONSEN |
| | PROJECT NAME: END OF WALL DETAILS | | | |
| | SCALE: NTS | SHEET NO: 1 OF 2 | SIZE: A | TOLERANCES: ANGULAR ±1° LINEAR ±0.06 |



NOTE:

Information and details are only a baseline for system and installation. Modification to meet project requirement is the responsibility of the designer, architect and contractor. MetalTech Global project staff are available to assist throughout the design and build process. © MetalTech Global. All rights reserved.

| | | | | |
|--|--|-----------------------------|----------------------------------|---|
| <p>UNLESS OTHERWISE SPECIFIED DIMENSIONS ARE IN INCHES</p> | <p>DRAWING NAME: END OF WALL DETAIL – OPTION 2</p> | | <p>REVISION NO: A</p> | <p>DATED CREATED: 10/1/2014</p> |
| | <p>DWG NO: MT_FLWP_1602</p> | | <p>CHECKED BY: ESIMONSEN</p> | <p>APPROVED BY: ESIMONSEN</p> |
| <p>PROJECT NAME: END OF WALL DETAILS</p> | | | | |
| <p>SCALE: NTS</p> | | <p>SHEET NO: 2 OF 2</p> | <p>SIZE: A</p> | <p>TOLERANCES: ANGULAR ±1° LINEAR ±0.06</p> |

